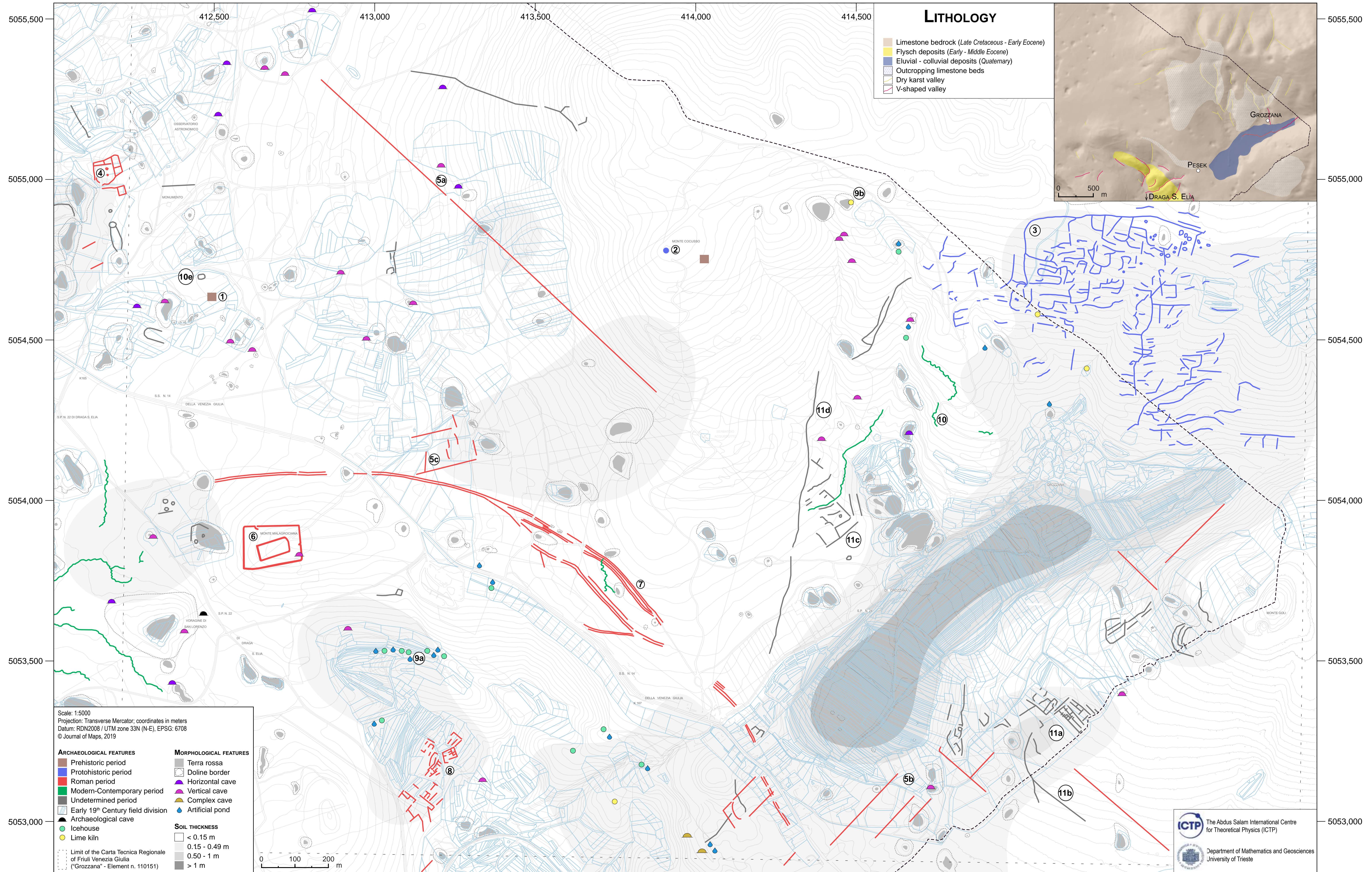


GEO-ARCHAEOLOGY OF THE GROZZANA AREA (N-E ITALY)

Giacomo Vinci⁽¹⁾, Federico Bernardini^(2, 1), Stefano Furlani⁽³⁾

⁽¹⁾ Multidisciplinary Laboratory, The "Abdus Salam" International Centre for Theoretical Physics, Strada Costiera 11, 34151 Trieste, Italy; ⁽²⁾ Centro Fermi, Museo Storico della Fisica e Centro di Studi e Ricerche "Enrico Fermi", Piazza del Viminale 1, 00184 Roma, Italy; ⁽³⁾ Department of Mathematics and Geosciences, University of Trieste, Trieste, Italy



Scale: 1:5000
 Projection: Transverse Mercator; coordinates in meters
 Datum: RDN2008 / UTM zone 33N (N-E), EPSG: 6708
 © Journal of Maps, 2019

ARCHAEOLOGICAL FEATURES

- Prehistoric period
- Protohistoric period
- Roman period
- Modern-Contemporary period
- Undetermined period
- Early 19th Century field division
- Archaeological cave
- Icehouse
- Lime kiln

MORPHOLOGICAL FEATURES

- Terra rossa
- Doline border
- Horizontal cave
- Vertical cave
- Complex cave
- Artificial pond

SOIL THICKNESS

- < 0.15 m
- 0.15 - 0.49 m
- 0.50 - 1 m
- > 1 m

Limit of the Carta Tecnica Regionale of Friuli Venezia Giulia ("Grozzana" - Element n. 110151)