

This provisional PDF corresponds to the article as it appeared upon acceptance.

A copyedited and fully formatted version will be made available soon.

The final version may contain major or minor changes.

Pathways for urology patients during the COVID-19 pandemic

Alchiede SIMONATO, Gianluca GIANNARINI, Alberto ABRATE, Riccardo BARTOLETTI, Alessandro CRESTANI, Cosimo DE NUNZIO, Andrea GREGORI, Giovanni LIGUORI, Giacomo NOVARA, Nicola PAVAN, Carlo TROMBETTA, Andrea TUBARO, Francesco PORPIGLIA, Vincenzo FICARRA, Research Urology Network (RUN)

Minerva Urologica e Nefrologica 2020 Mar 30

DOI: 10.23736/S0393-2249.20.03861-8

Article type: Short communication

© 2020 EDIZIONI MINERVA MEDICA

Article first published online: March 30, 2020

Manuscript accepted: March 30, 2020

Manuscript received: March 30, 2020

Subscription: Information about subscribing to Minerva Medica journals is online at:

<http://www.minervamedica.it/en/how-to-order-journals.php>

Reprints and permissions: For information about reprints and permissions send an email to:

journals.dept@minervamedica.it - journals2.dept@minervamedica.it - journals6.dept@minervamedica.it

Pathways for urology patients during the COVID-19 pandemic

Alchiede Simonato^{1,2}, Gianluca Giannarini³, Alberto Abrate¹, Riccardo Bartoletti⁴, Alessandro Crestani⁵, Cosimo De Nunzio⁶, Andrea Gregori⁷, Giovanni Liguori⁸, Giacomo Novara⁹, Nicola Pavan⁸, Carlo Trombetta⁸, Andrea Tubaro⁶, Francesco Porpiglia¹⁰, Vincenzo Ficarra¹¹; Members of the Research Urology Network (RUN)

¹Department of Surgical, Oncological and Oral Sciences, Urology Section, University of Palermo, Italy; ²Department of Surgery, Urology Unit, S. Croce e Carle Hospital, Cuneo, Italy; ³Urology Unit, Academic Medical Centre “Santa Maria della Misericordia”, Udine, Italy; ⁴Department of Translational Research and New Technologies, Urology Unit, University of Pisa, Italy; ⁵Urology Unit, IRCCS Venetian Oncologic Institute (IOV), Castelfranco Veneto (Treviso), Italy; ⁶Department of Urology, Sant’Andrea Hospital, Sapienza University of Rome, Italy; ⁷Urology Unit, ASST Fatebenefratelli-Sacco, Sacco Hospital, Milan, Italy; ⁸Department of Urology, Cattinara Hospital, University of Trieste, Italy; ⁹Department of Surgery, Oncology, and Gastroenterology, Urology Clinic, University of Padua, Italy; ¹⁰Division of Urology, Department of Oncology, School of Medicine, San Luigi Hospital, University of Turin, Orbassano, Italy; ¹¹Department of Human and Pediatric Pathology “Gaetano Barresi”, Urology Section, University of Messina, Italy

Corresponding Author:

Prof. Vincenzo Ficarra, MD, FEBU

Department of Human and Pediatric Pathology “Gaetano Barresi”, Urologic Section, University of Messina, Italy

Policlínico Universitario “G. Martino”, Via Consolare Valeria 1, 98125 Messina

e-mail: vficarra@unime.it

twitter: @FicarraVincenzo

Abstract

The public health emergency caused by the Coronavirus Disease 2019 (COVID-19) pandemic has resulted in a significant reallocation of health resources with a consequent reorganization of the clinical activities also in several urological centers. A panel of Italian urologists has agreed on a set of recommendations on pathways of pre-, intra- and post-operative care for urological patients undergoing urgent procedures or non-deferrable oncological interventions during the COVID-19 pandemic. Simplification of the diagnostic and staging pathway has to be prioritized in order to reduce hospital visits and consequently the risk of contagion. In absence of strict uniform regulations that impose the implementation of nasopharyngeal swabs, we recommend that an accurate triage for possible COVID-19 symptoms be performed both by telephone at home before hospitalization and at the time of hospitalization. We recommend that during hospital stay patients should be provided with as many instructions as possible to facilitate their return to, and stay at, home. Patients should be discharged under stable good conditions in order to minimize the risk of readmission. It is advisable to reduce or reschedule post-discharge controls and implement an adequate system of communication for telemonitoring discharged patients in order to reduce hospital visits.

Keywords: Coronavirus; COVID-19; pandemic; urology; clinical practice guidelines; clinical pathways; telemonitoring

1. Introduction

The public health emergency caused by the Coronavirus Disease 2019 (COVID-19) pandemic has resulted in a significant reallocation of health resources with a consequent reorganization of the clinical activities also in several urological centers based on the availability of hospital beds, and above all, anesthesiologists. Recently, the Research Urology Network (RUN) proposed a document to guide the reorganization of urological procedures during the COVID-19 pandemic, identifying non-deferrable, semi-non-deferrable and deferrable interventions [1]. Other recommendations on the same topic have been proposed by different experts and international scientific societies [2-4]. However, all the documents currently available do not provide sufficient operational details on the initial management of urological patients as well as on their post-treatment care during the COVID-19 pandemic. The need to reduce patient accesses to hospitals and to use the available diagnostic resources in the most rational way generates the proposal for simplified diagnostic pathways based both on good clinical practice and on the clinical experience of all Authors involved in drafting of the present document. Obviously, these pathways must guarantee quality standards that allow early diagnosis and appropriate treatment of all possible complications related to the different urological procedures/surgeries performed. Furthermore, discharge from hospitals should be a safe event not only for patients, but also for the entire community.

The aim of this document is to provide the international urological community with a valid aid for the reorganization of urological activities during, and immediately after, the COVID-19 pandemic. This article is focused on the analysis of the measures to be adopted in all different phases of the pathway of care for urological patients in the times of the COVID-19 pandemic, from pre-admission and hospitalization to intra- and postoperative phase and follow-up with essential recommendations provided at discharge. Consequent recommendations were discussed and shared within a team of national experts affiliate to the Research Urology Network (RUN).

2. Methods

This document was drafted based on the few data available in urology literature on the management of urological patients in the COVID-19 pandemic era. A simplification of the diagnostic-therapeutic algorithms for the main urgent urological conditions was agreed upon considering the

recommendations of the 2020 European Association of Urology (EAU) guidelines [5] and based on the experience gained by the Authors in the emergency phase of the COVID-19 pandemic in Italy. After electronically sharing the main objectives of the document, a first draft was created which was subsequently shared, commented on and modified on the basis of a conference call made between the Authors on March 28, 2020. The final version of the manuscript was completed on March 29, 2020 after approval by all Authors.

3. Pathways for emergency urological conditions

Based on recently published documents [1,2], the main urological emergency conditions to be discussed are:

- 1) Upper urinary tract obstruction (with or without sepsis)
- 2) Acute or chronic urinary retention
- 3) Gross hematuria
- 4) Genitourinary trauma and acute scrotum.

The decisional algorithm shown in Figure 1 summarizes the pathway to follow in case of obstruction of the upper urinary tract with or without sepsis. In particular, if the emergency department does not allow for, or deems risky, the execution of an abdominal-pelvic CT due to organizational or logistical reasons, it is proposed to simplify the diagnostic process with exclusively an abdominal-pelvic ultrasound and to plan the abdominal-pelvic CT (with or without contrast medium) after the COVID-19 pandemic.

The decisional algorithm shown in Figure 2 summarizes the pathway to follow in case of acute or chronic urinary retention. Patients with acute urine retention can be immediately treated with transurethral catheter without the need for fractional emptying. In patients with chronic urine retention, the choice between suprapubic cystostomy and transurethral catheter is related to the presence of an upper urinary tract dilatation or the impossibility to catheterize the patients due to urethral stenosis. These patients require a fractional emptying of urine to prevent the risk of ex vacuo hematuria and/or post-obstructive polyuria. Further diagnosis and treatment of the underlying pathology (such as as benign prostatic obstruction) may be delayed after the emergency phase.

The decision algorithm shown in Figure 3 summarizes the pathway to follow in case of gross hematuria. It is important in these patients to minimize the risk of anemia considering the contextual shortage of blood donors observed during the COVID-19 pandemic. In case of bleeding caused by renal disease, general monitoring of the patient and the possible use of percutaneous embolization procedures, or endo-urological maneuvers such as double-J stent application, are recommended. The former do not require general anesthesia, the latter require short-duration anesthesia, but both allow to delay any surgical treatment of the underlying pathological condition to a subsequent period, whenever possible. These maneuvers prevent the development of severe anemia and the onset of possible obstructions from clots with consequent risk of urosepsis.

With regard to management of genitourinary trauma and acute scrotum, the procedures during the COVID-19 pandemic must reflect the standard clinical practice.

4. Pathways for elective surgery

4.1. Pre-admission and hospitalization

Pre-admission and hospitalization of urological patients scheduled for elective surgery during the COVID-19 pandemic should consider two important practical aspects, such as the need to reduce patient home-hospital flow, and a limited (or null) access to all the diagnostic exams related to pre-admission.

Furthermore, it should be important to guarantee that patients coming from home do not constitute a source of contagion for hospitalized patients. For this reason, two different pathways can be outlined, one ideal and one alternative, if the former is not feasible (Figure 4).

For both pathways, preoperative examinations should be performed with a single hospital access wherever possible, after telephone triage for COVID-19 symptoms and using preferential and well-defined hospital routes. Routine blood and instrumental tests to define the anesthesiology risk should be always performed in all patients scheduled for elective surgery.

Analyzing the ideal pathway specifically, which is desirable in COVID-19-free hospitals, during the pre-admission phase it would be advisable to carry out a nasopharyngeal swab in all patients to rule the presence of the severe acute respiratory syndrome coronavirus 2 (SARS-CoV-2) out. Test

results should be available within a day. At the end of the pre-admission work-up, each patient waiting for test results should be isolated in a single room within a dedicated area. After receiving a negative test result, the patient should be sent directly to the hospital ward. In the event of a positive test result in an asymptomatic subject, the patient must be isolated at home and hospitalization has to be postponed.

The alternative pathway, which should be implemented if pre-admission and hospitalization cannot be completed in a single step, dictates, instead, that triage, first carried out by telephone and subsequently at the time of patient access to the ward, is repeated strictly at each hospital access, and that a nasopharyngeal swab for SARS-CoV-2 is performed before surgery.

In accordance with the indications of the Centers for Disease Control and Prevention [6], it is advisable to guarantee a single access point to facilitate screening procedures.

Excluding the risk of any suspicious symptoms and signs (body temperature) of COVID-19, hospitalized patients should be asked to wear a surgical mask and to observe the hygiene rules recommended for the general population. A valid aid is to reduce the number of beds per room and/or to ensure the minimum safety distance between patients.

The recommendation to use individual protection systems is mandatory both for patients and for healthcare workers.

Considering that most non-deferrable surgical procedures are performed for the treatment of genitourinary malignancies [1], staging is of utmost importance. In this context, although adherence to recommendations of international guidelines should be respected, those examinations that are not essential for surgical planning and staging should be postponed (Table 1).

4.2. Intraoperative and postoperative phase

Intraoperative phase

As previously reported, we recommend that surgical procedures be performed by experienced operators using those approaches and techniques they are more confident with, in order to decrease operating time and minimize the risk of postoperative complications [1]. In the past days, contrasting opinions have emerged with regard to safety in utilization of laparoscopy procedures (conventional and robot-assisted) as a consequence of the potential risk of dissemination of Coronavirus via laparoscopy gas [7]. Whereas the Intercollegiate General Surgery Guidance recommend that

laparoscopy should not be used [3], guidelines from EAU Robotic Urology Section (ERUS) provide a list of non-deferrable or semi-non-deferrable robot-assisted procedures that should be performed based on the different impact of the COVID-19 pandemic at different hospitals [4]. While we await more data and recommendations based on the evidence of a concrete risk of viral contamination during laparoscopy procedures, we confirm our advice to use laparoscopy procedures with extreme caution, and to adopt all measures for minimizing the risk of viral contagion to operating staff [7] (Table 2). Figure 4 shows the use of a device for suction of surgical smokes produced by electrocautery during open surgery, which can be also used during laparoscopy.

Postoperative phase

In order to decrease complications and hospital stay, Enhanced Recovery After Surgery protocols should be adopted [8].

Among the measures adopted to contain the risk of viral contagion, many hospitals have prohibited access to the ward to patient relatives. This requires the implementation of a system that allows for daily transmission of information on clinical course to patient relatives.

In case of suspected COVID-19 patients in the ward, hospital authorities should be immediately informed in order to adopt appropriate isolation measures, perform diagnostic tests and, eventually, transfer the patients to dedicated COVID-19 areas in the hospital. It is equally fundamental that medical or nurse staff that have come in contact with COVID-19 patients undergo nasopharyngeal swabs or, alternatively, follow the regulations imposed by local hospital authorities that may vary depending on different logistics and organizational protocols. In any case, standard postoperative therapeutic pathways should not be modified.

Patients following urological surgical procedures should be discharged only when their clinical conditions and logistics allow for a safe return to their home, thus reducing the risk of occurrence of immediate complications and readmission.

Scheduling of postoperative pathway and follow-up visits represents a critical issue to be considered especially in the emergency phase of the COVID-19 pandemic. Patients with indwelling urinary catheters (nephrostomy tube, suprapubic cystostomy tube or transurethral catheter) should be informed and trained for a completely autonomous home care. With regard to this, photographic or video tutorials could be of aid to ease home care of urinary stoma for patients and their relatives. Patients discharged with indwelling internal ureteral stents need no specific advice. Moreover, using absorbable material for skin suture avoids subsequent hospital visits for their removal.

Table 2 and Table 3 summarize the main variations in follow-up schedule that should be followed during the COVID-19 pandemic compared to standard conditions for urgent and oncological non-deferrable urological procedures, respectively. We believe it is useful that ward staff provide as many instructions as possible during the hospital stay in order to facilitate home care. Among these explanations, it is particularly important to inform patients and their relatives that potential vehicles of viral transmission are feces and blood besides nasopharyngeal fluids and saliva [1].

The need for reduction of postoperative outpatient visits requires that our centers implement new systems of telemonitoring. Unfortunately, telemedicine applications are currently still in their early phase, and the emergency generated by the COVID-19 pandemic imposes that commoner tools, such as smartphones and electronic mail, be used for telemonitoring. Urology wards should implement systems for priority communications via telephone or electronic mail from patients to the medical or nurse staff in order to check the clinical course and decrease the risk of inappropriate hospital visits.

Informing patients on the results of a pathological exam, especially after urological procedures for genitourinary malignancies that we have previously defined as non-deferrable, is one of the most critical step in the diagnostic and therapeutic clinical path [1]. Considering the lower burden of routine work for pathology personnel in these times, it would be desirable that pathology report be available before patient discharge, so that the therapeutical pathway can be completed and the follow-up programme can be scheduled. If this is not an option, then we recommend that the pathological report be sent home via electronic mail being accompanied by a telephone call from the practicing urologist. This combined communication of the pathology report (electronic and telephonic) should contain all possible explanations on the oncological diagnosis and on the corresponding programme with all subsequent follow-up exams or visits. Before sending all this documents, it is advisable to retrieve patient informed consent, or alternatively, follow local hospital rules.

5. Conclusions

The present document provides a useful set of recommendations on pathways of pre-, intra- and post-operative care for urological patients undergoing urgent procedures or non-deferrable oncological interventions during the COVID-19 pandemic. Simplification of the diagnostic and staging pathway has to be prioritized in order to reduce hospital visits and consequently the risk of contagion. In absence of strict uniform regulations that impose the

implementation of nasopharyngeal swabs, we recommend that an accurate triage for possible COVID-19 symptoms be performed both by telephone at home before hospitalization and at the time of hospitalization. We recommend that during hospital stay patients should be provided with as many instructions as possible to facilitate their return to, and stay at, home. Patients should be discharged under stable good conditions in order to minimize the risk of readmission. It is advisable to reduce or reschedule post-discharge controls and implement an adequate system of communication for telemonitoring discharged patients in order to reduce hospital visits. We finally believe that some of the solutions proposed to face the current emergency, if maintained, may optimize routine clinical practice even in standard health conditions.

References

1. Ficarra V, Novara G, Abrate A, et al. Urology practice during COVID-19 pandemic. *Minerva Urol Nefrol.* 2020 Mar 23. doi: 10.23736/S0393-2249.20.03846-1. [Epub ahead of print].
2. Stensland KD, Morgan TM, Moinzadeh A, Lee CT, Briganti A, Catto J, Canes D. Considerations in the triage of urologic surgeries during the COVID-19 pandemic. *Eur Urol* 2020 in press.
3. Intercollegiate General Surgery Guidance on COVID-19 UPDATE. Available at <https://www.rcsed.ac.uk/news-public-affairs/news/2020/march/intercollegiate-general-surgery-guidance-on-covid-19-update>, accessed on March 29, 2020.
4. EAU Robotic Urology Section (ERUS) guidelines during COVID-19 emergency. Available at <https://uroweb.org/eau-robotic-urology-section-erus-guidelines-during-covid-19-emergency/>, accessed on March 29, 2020.
5. European Association of Urology Guidelines. Available at <https://uroweb.org/guidelines>, accessed on March 29, 2020.
6. Available at <https://www.cdc.gov/coronavirus>, accessed on March 29, 2020.
7. Society of American Gastrointestinal and Endoscopic Surgeons recommendations regarding surgical response to COVID-19 crisis. Available at: <https://www.sages.org/recommendations-surgical-response-covid-19>, accessed on March 29, 2020.
8. Enhanced Recovery After Surgery Society Guidelines. Available at <https://erassociety.org/guidelines/list-of-guidelines/>, accessed on March 29, 2020.

Figure Legends

Figure 1. Decisional algorithm for diagnosis and management of upper urinary tract obstruction (with or without sepsis) during the COVID-19 pandemic.

Figure 2. Decisional algorithm for management of urinary retention during the COVID-19 pandemic.

Figure 3. Decisional algorithm for management of gross hematuria during the COVID-19 pandemic.

Figure 4. Decisional algorithm for hospitalization and discharge pathways during the COVID-19 pandemic.

Figure 5. RapidvacTM Smoke Evacuator is a medical device that allows for the immediate suction of surgical smokes produced by electrocautery during open (and laparoscopic) surgery (courtesy of Prof. Francesco Porpiglia).

Table 1. Proposed recommendations for preoperative staging exams for the non-deferrable oncological procedures during COVID-19 pandemic adapted from the latest version of the EAU Guidelines [5]. The panel suggest that in case of indeterminate findings on adapted staging or in complex cases, the EAU Guidelines be fully followed.

Condition	Surgical procedure	2020 EAU Guidelines	Adaptation to COVID-19 pandemic
Muscle-invasive bladder cancer Refractory urothelial carcinoma in situ of the bladder	Radical cystectomy with urinary diversion	<ul style="list-style-type: none"> • Chest/abdomen/pelvis CT • CT-urography • Diagnostic ureteroscopy^a • Abdomen/pelvic MRI^a 	<ul style="list-style-type: none"> • Chest/abdomen/pelvis CT
Bladder cancer with high risk of progression	Transurethral resection of bladder tumors	<ul style="list-style-type: none"> • CT-urography (selected cases) 	<ul style="list-style-type: none"> • CT-urography (selected cases at first diagnosis)
High-risk upper urinary tract urothelial carcinoma	Nephroureterectomy with possible template-based lymph node dissection	<ul style="list-style-type: none"> • CT-urography • Diagnostic ureteroscopy^a • Urethrocytostcopy 	<ul style="list-style-type: none"> • CT-urography • Flexible urethrocytostcopy
High-risk localized or locally advanced prostate cancer	Radical prostatectomy with template-based pelvic lymph node dissection	<ul style="list-style-type: none"> • Abdomen/pelvis CT or MRI • Bone scan • Multiparametric prostate MRI^a 	<ul style="list-style-type: none"> • Abdomen/pelvis CT • Bone scan
Renal cell carcinoma cT3-4	Radical nephrectomy (with caval thrombus removal)	<ul style="list-style-type: none"> • Chest/abdomen CT • Abdomen CEUS/MRI^a 	<ul style="list-style-type: none"> • Chest/abdomen CT
Renal cell carcinoma cT2	Radical nephrectomy Partial nephrectomy (selected cases)	<ul style="list-style-type: none"> • Chest/abdomen CT • Abdomen CEUS/MRI^a 	<ul style="list-style-type: none"> • Chest/abdomen CT
Testicular cancer	Radical orchidectomy	<ul style="list-style-type: none"> • Serum tumor markers • Chest/abdomen/pelvis CT • Brain MRI/TC (selected cases) 	<ul style="list-style-type: none"> • Serum tumor markers • Chest/abdomen/pelvis CT
Penile cancer	Penectomy Inguinal lymph node dissection	<ul style="list-style-type: none"> • Pelvic CT or PET/CT^a • Penile doppler US/MRI^a • Chest/abdomen/pelvis CT in N+ 	<ul style="list-style-type: none"> • Pelvic CT • Chest/abdomen/pelvis CT in N+

CT = computed tomography; MRI = magnetic resonance imaging; CEUS = contrast-enhance ultrasound; EAU = European Association of Urology; COVID-19 = Coronavirus Disease 2019; PET = positron emission tomography; ^aoptional/weak strength rating

Table 2. Proposed intraoperative measures to decrease the risk of viral contamination during laparoscopy procedures (modified from [7]).

1. Repeatedly clean surgical instruments from blood or other body fluids
2. Avoid formation of collections of blood or other body fluids at the level of trocars caused by gas leak
3. Use suction to remove surgical smokes and renovate gas
4. Avoid 2-way pneumoperitoneum insufflators
5. Keep pneumoperitoneum and insufflation pressure as low as possible
6. Keep Trendelenburg grade at a minimum
7. Minimize pneumoperitoneum-related effects on cardio-pulmonary function
8. Set electrocautery power at the lowest level
9. Avoid prolonged surgical dissection to decrease smoke formation
10. Continuously check for breakage of protective equipment for both instruments and operating staff

Table 3. Proposed recommendations on discharge after urgent procedures during the COVID-19 pandemic compared to standard health conditions.

Recommendation	Renal trauma		Testicular torsion		Infection/abscess		Priapism	
	Standard	COVID-19	Standard	COVID-19	Standard	COVID-19	Standard	COVID-19
Skin suture removal	yes	no ^a	no ^a	no ^a	yes	no ^a	no ^a	no ^a
Surgical wound check	yes	no	yes	no	yes	no	yes	no
Blood tests	yes	no ^b	no	no	yes	no	no	no
Telemonitoring	no	yes	no	yes	no	yes	no	yes

COVID-19 = Coronavirus Disease 2019; ^aabsorbable material is recommended; ^bdischarge under stable good conditions

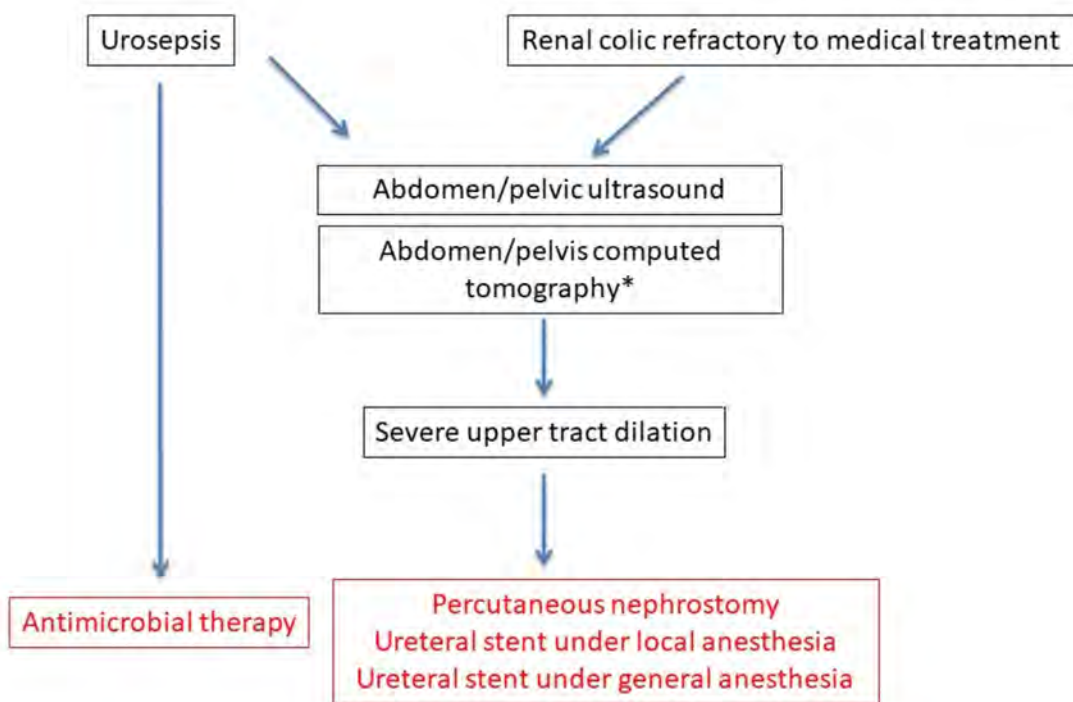
Table 4. Proposed recommendations on discharge after non-deferrable oncological procedures during the COVID-19 pandemic compared to standard health conditions.

Recommendation	Radical cystectomy		Radical prostatectomy		Radical nephrectomy		Radical orchidectomy		Penectomy	
	Standard	COVID-19	Standard	COVID-19	Standard	COVID-19	Standard	COVID-19	Standard	COVID-19
Skin suture removal	yes	no ^a	yes	no ^a	yes	no ^a	no	no ^a	no	no ^a
Surgical wound check	yes	no	yes	no	yes	no	yes	no	yes	no
Bladder catheter removal after cystography	yes	yes/no (neobladder)	yes/no	no ^b	no	no	no	no	no	no
Ureteral catheter removal	yes/no ^c	no	no	no	no	no	no	no	no	no
Serum tumor markers	no	no	no	no	no	no	yes	yes	no	no
Blood tests	yes	no ^d	no	no	yes	no ^d	no	no	no	no
Telemonitoring	no	yes	no	yes	no	yes	no	yes	no	yes

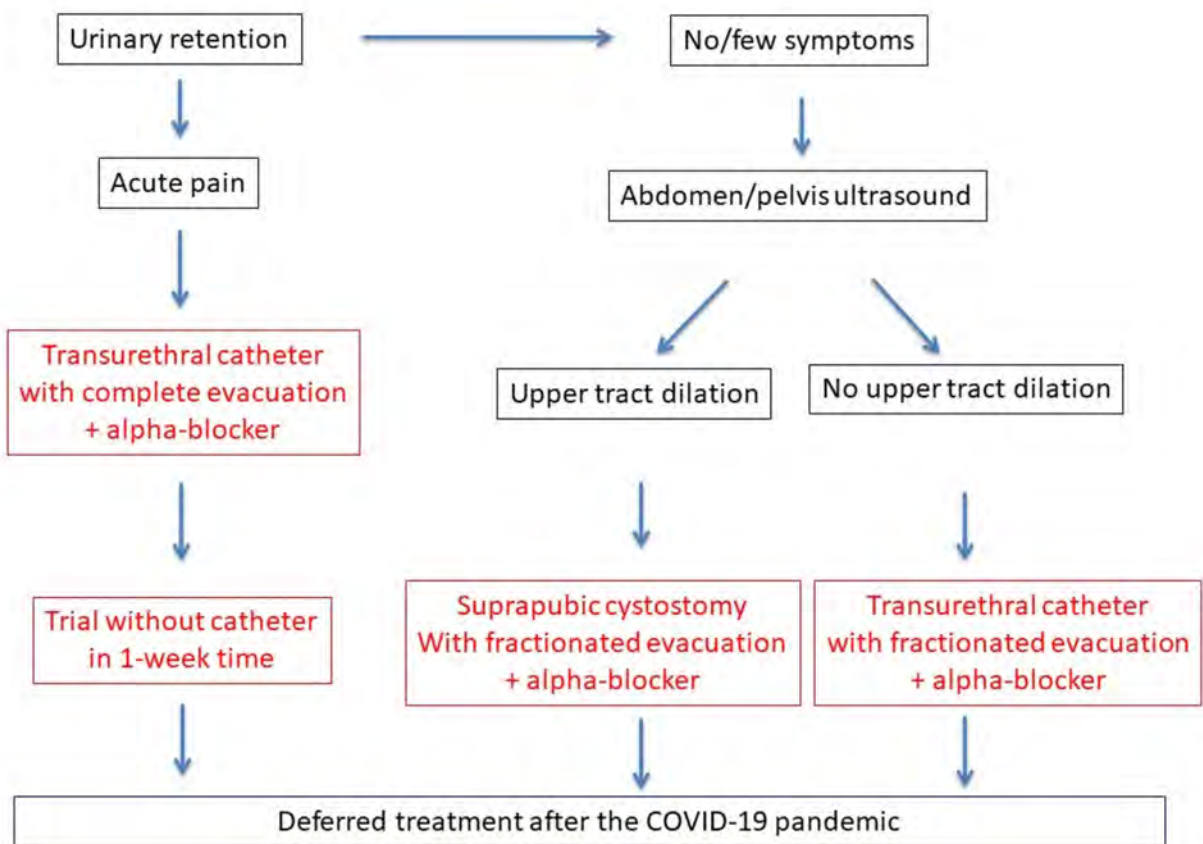
COVID-19 = Coronavirus Disease 2019; ^aabsorbable material is recommended; ^bremoval is recommended on postoperative day 8 to 14 depending on intraoperative tissue/anastomosis conditions; ^cdepending on type of urinary diversion; ^dto be performed only if clinical utility is expected

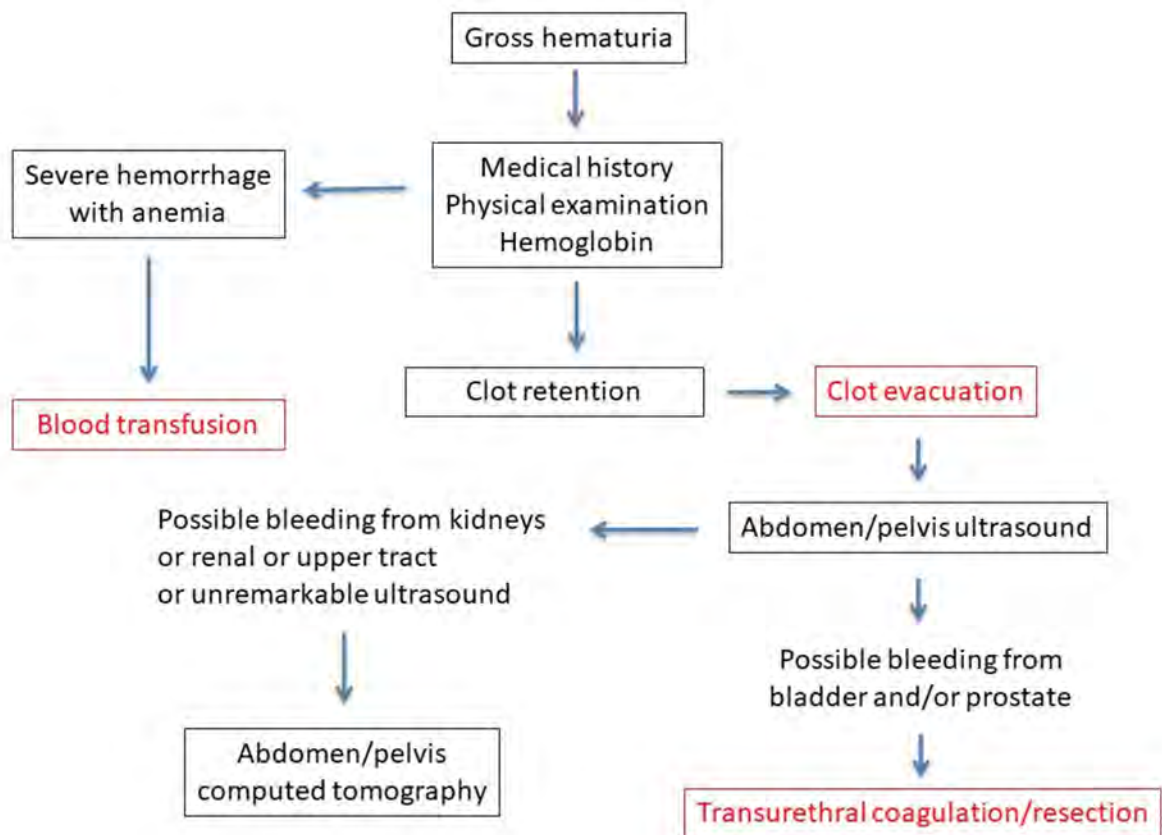
Appendix

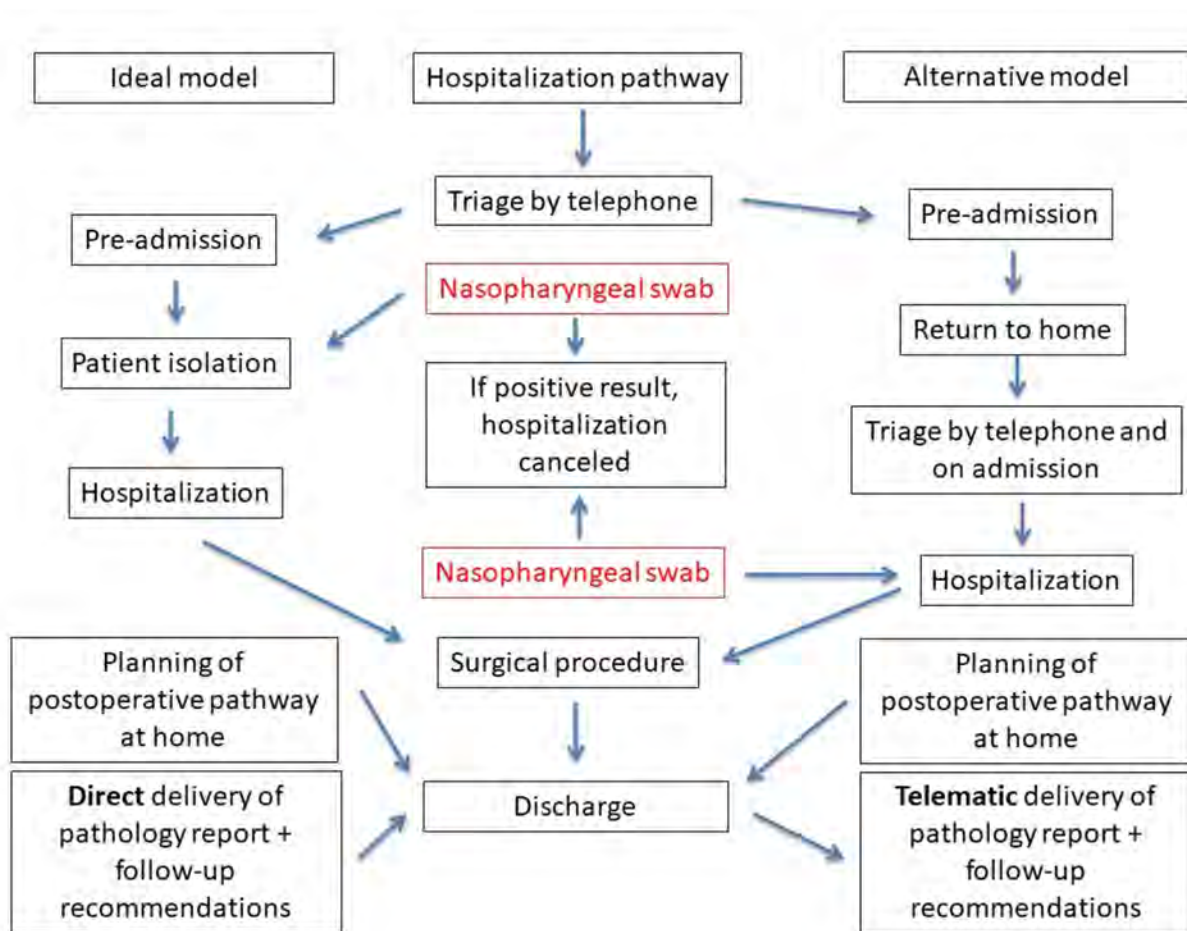
The Italian version of the present document is available as Supplementary file.

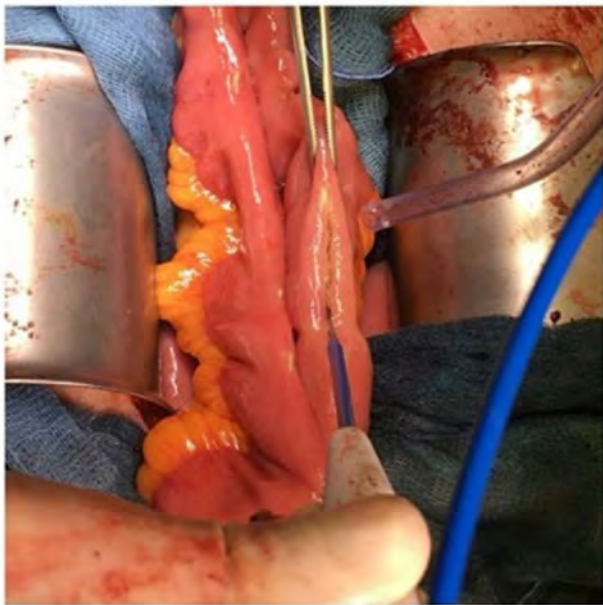


*optional if favourable logistics or organizational regulations









Supplementary Digital Material

Download supplementary material file: [Minerva Urol Nefrol-3861_1_V2_2020-03-30.docx](#)