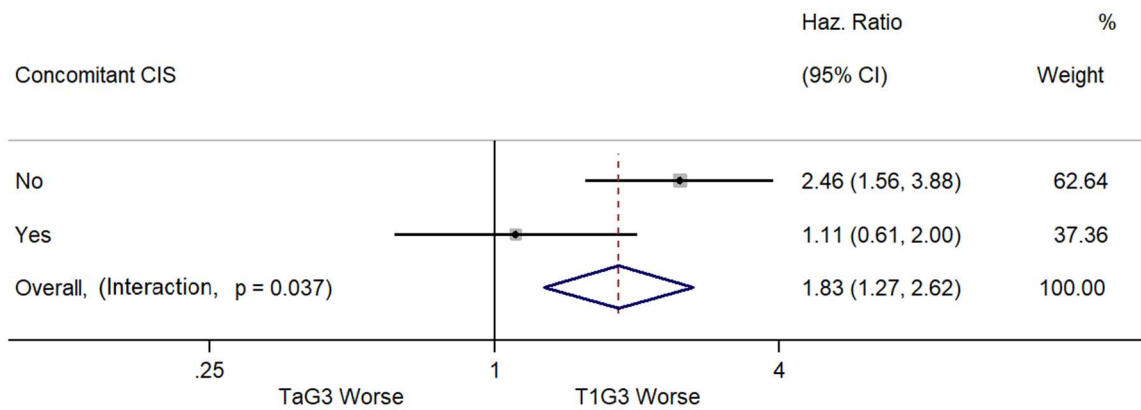


Supplementary Figure 1. Forest plot of interaction between Ta-G3/T1-G3 and concomitant CIS on time to progression. The interaction between Ta-G3/T1-G3 and concomitant CIS on time to progression was significant ($P=0.037$).



Abbreviations: CIS = carcinoma in situ ; T = tumor stage; G = tumor grade according to World Health Organization 1973 grading system.