

**Trmun (north-eastern Italy): multi-scale remote and ground-based sensing of a
Bronze Age and post-Roman fortification**

Supplementary material

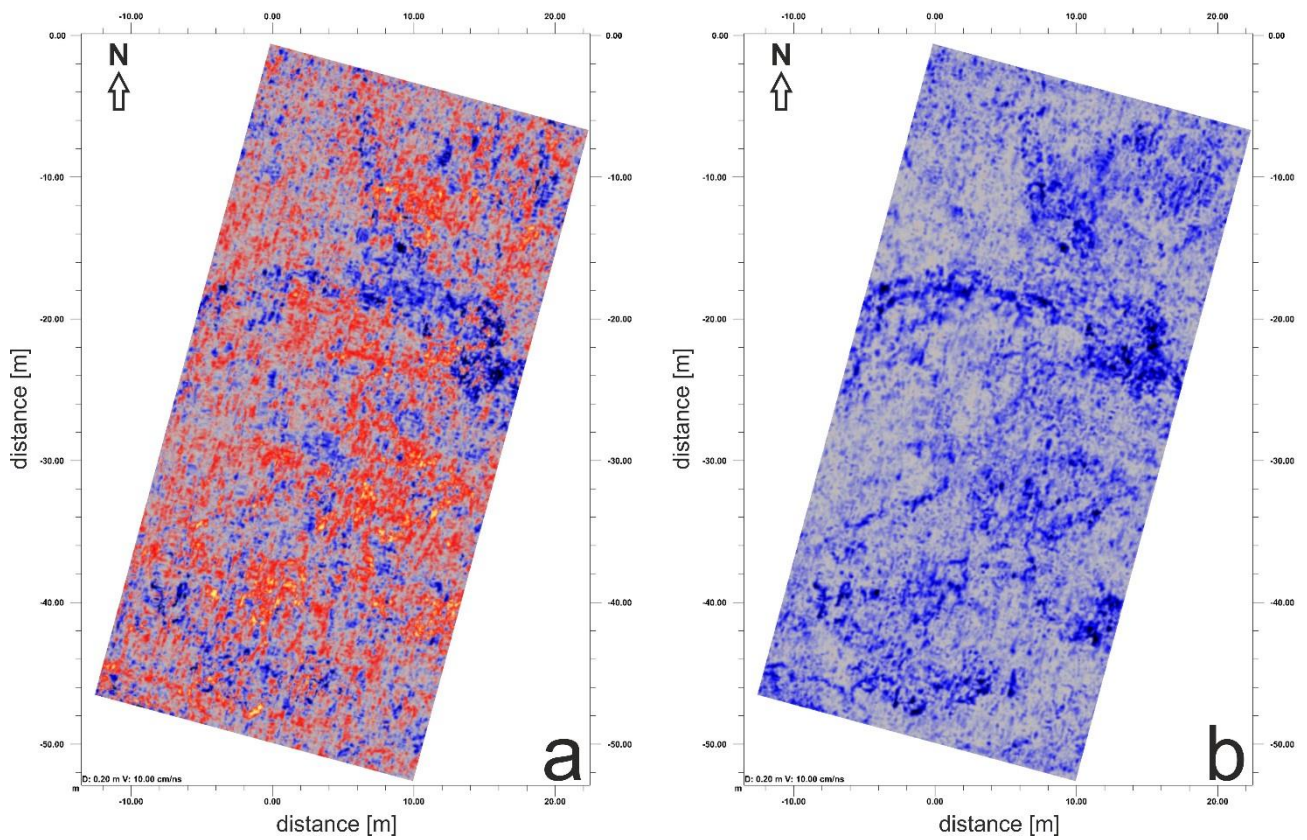


Figure S1. GPR depth slice 20 cm below the surface. a) Reflection amplitude; b) instantaneous amplitude.

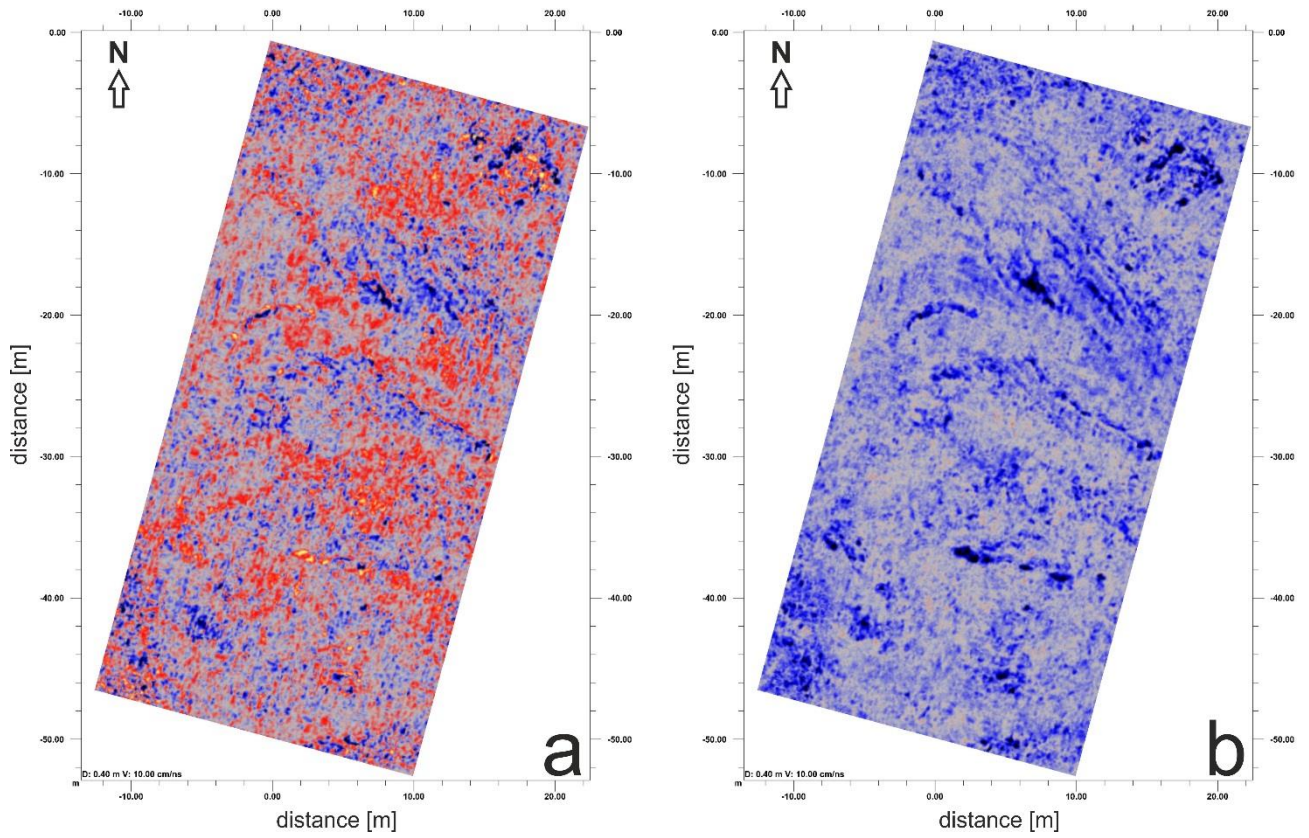


Figure S2. GPR depth slice 40 cm below the surface. a) Reflection amplitude; b) instantaneous amplitude.

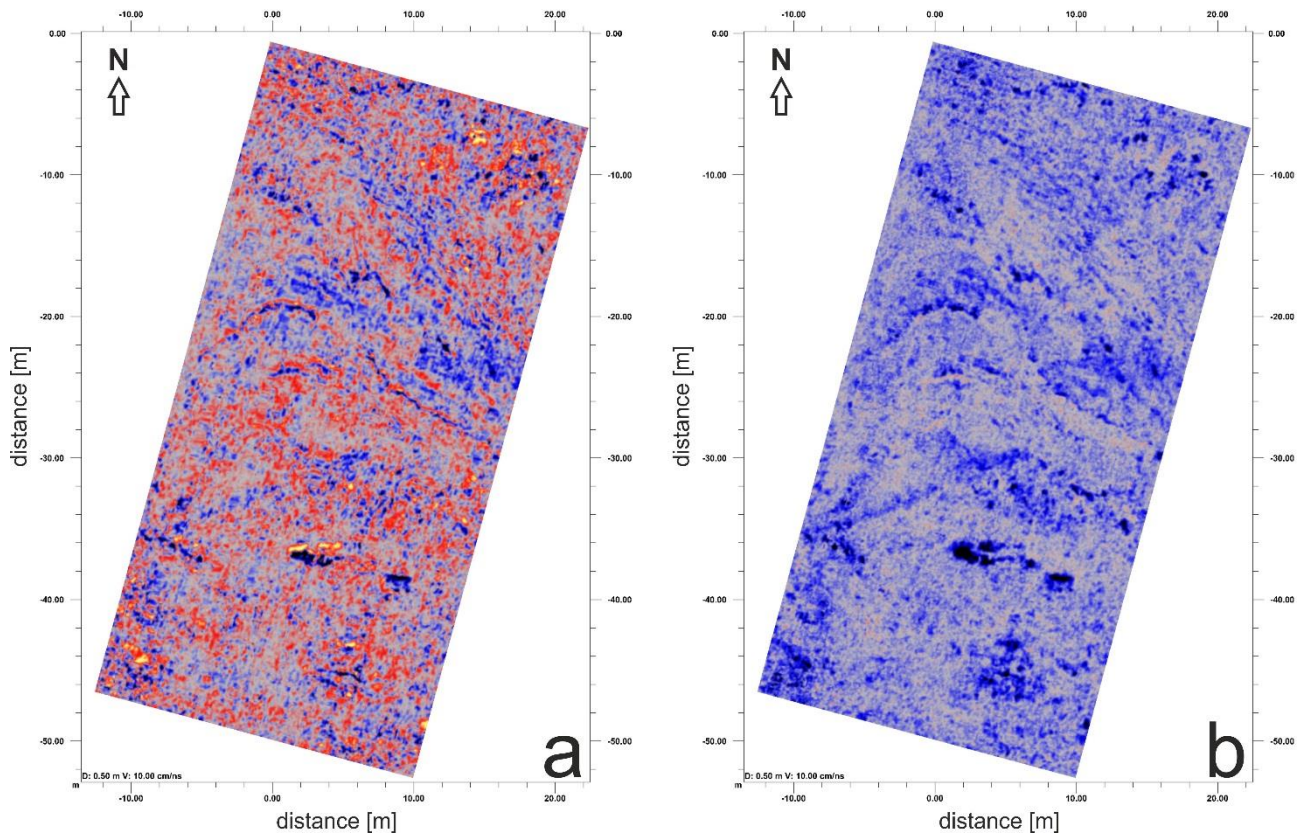


Figure S3. GPR depth slice 50 cm below the surface. a) Reflection amplitude; b) instantaneous amplitude.

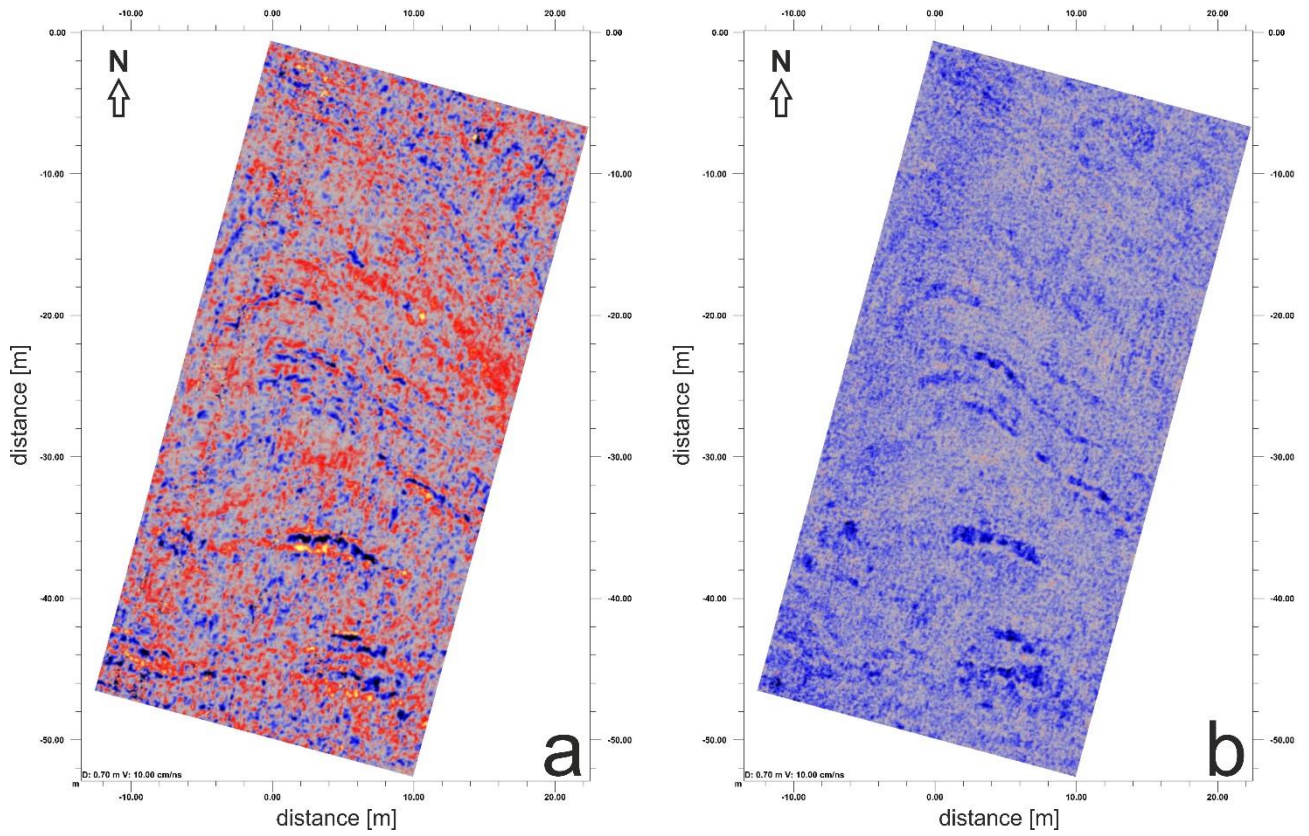


Figure S4. GPR depth slice 70 cm below the surface. a) Reflection amplitude; b) instantaneous amplitude.