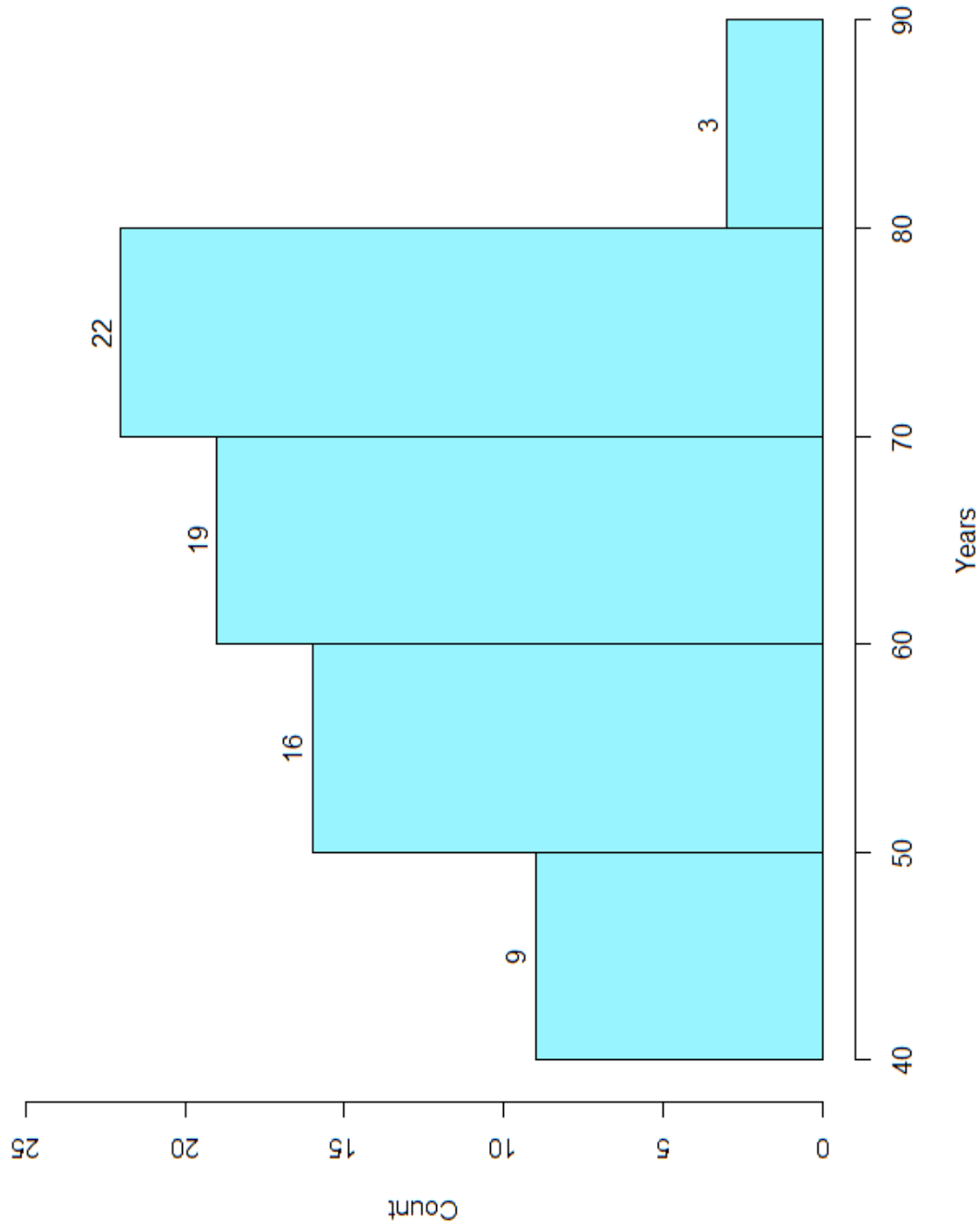


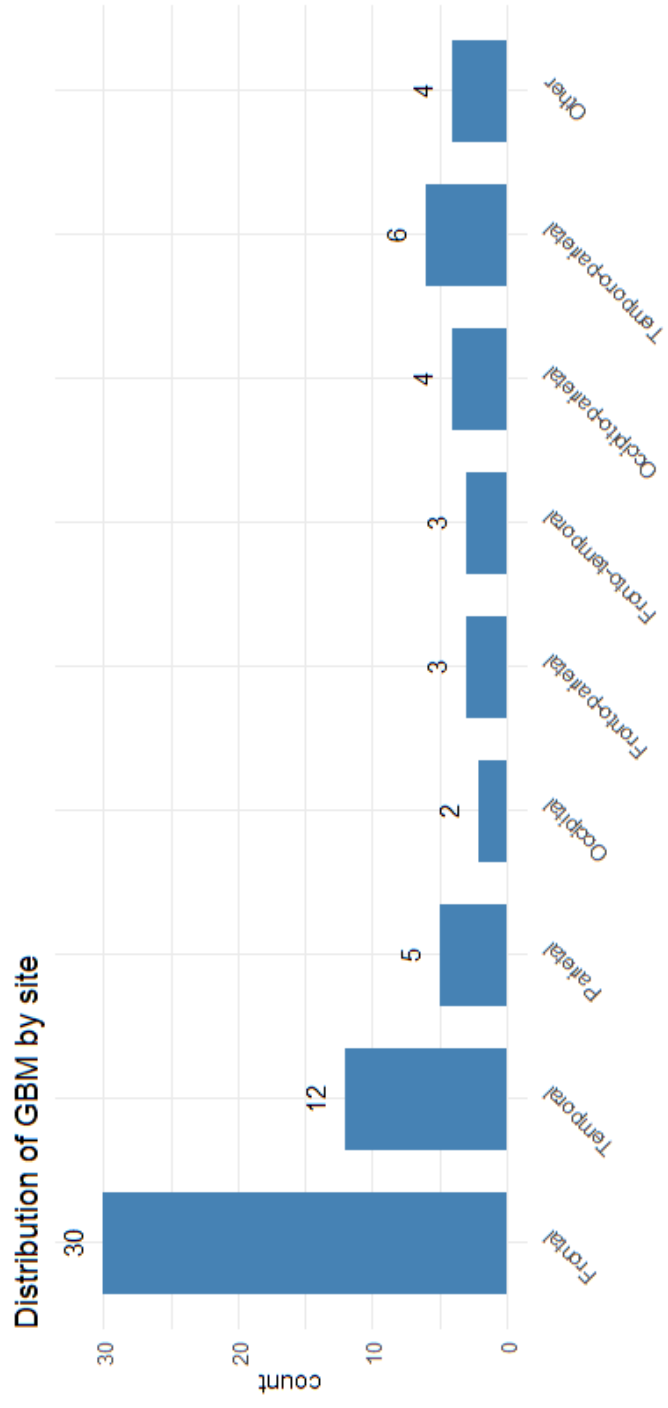
supplementary

Supplemental Table S1: Antibodies and immunostaining protocols.

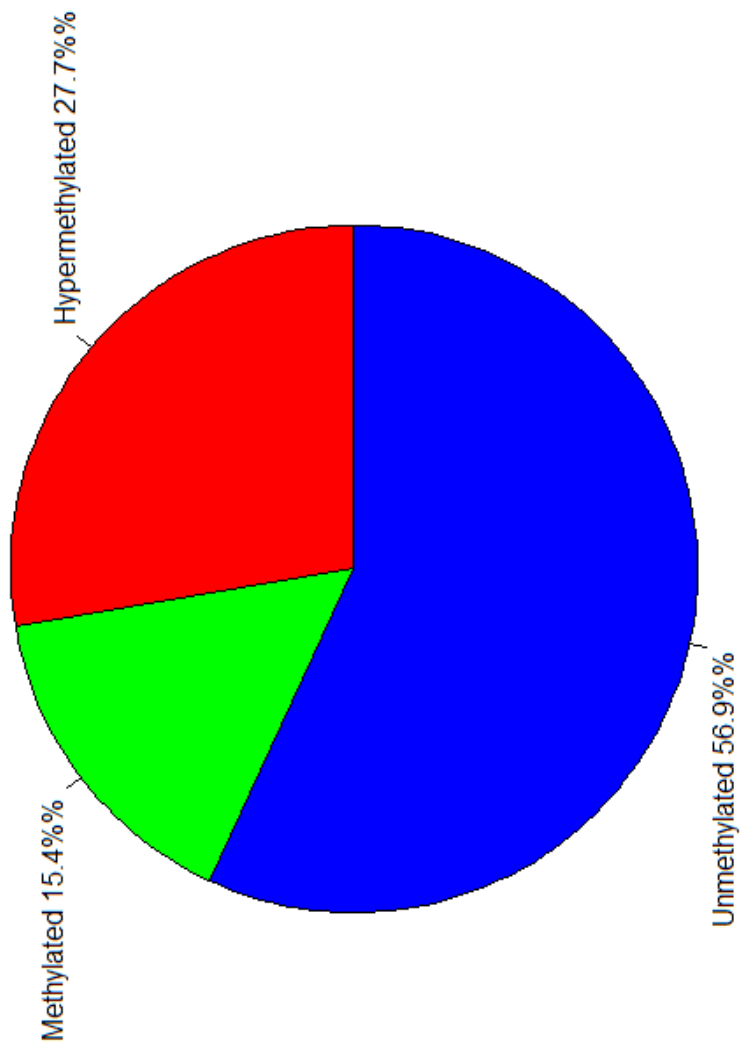
Maker	Cell types	Antibody Clone	Company	Dilution	Buffer	Detection and amplification system
CD3	General T cell population; effector T cells	Monoclonal rabbit antibody, clone 2GV6 / Ref. Nr. 790-4341	Ventana Medical Systems, Tucson, Arizona, USA	1:200	CC1 (ph 8), Ventana Medical Systems, Tuscon, USA)	UltraView DAB, Ventana Medical Systems, Tuscon, USA)
PD-L1	Antigen presenting cells, cancer cells, macrophages, neurons	Monoclonal rabbit antibody, Clone SP263 / Ref. Nr. 740-4907	Ventana Medical Systems, Tucson, Arizona, USA	1:100	CC1 (ph 8), Ventana Medical Systems, Tuscon, USA)	UltraView DAB, Ventana Medical Systems, Tuscon, USA)

Patient's age distribution

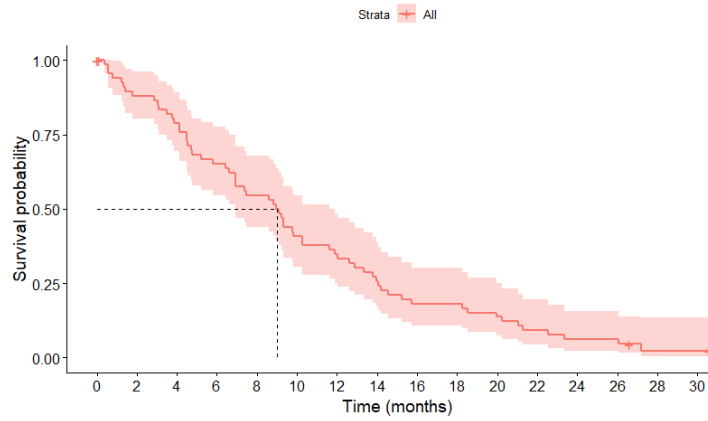




MGMT



a Overall survival

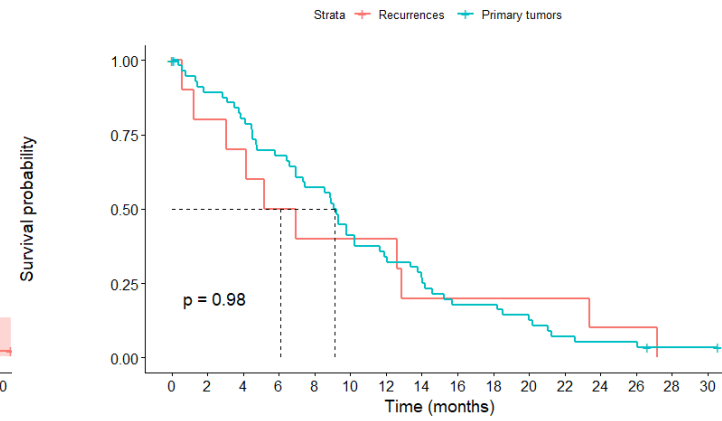


Overall survival

Time (months)	0	2	4	6	8	10	12	14	16	18	20	22	24	26	28	30
Strata All	69	58	52	43	36	27	23	17	12	12	9	6	4	4	1	1

b

Overall survival of primary tumors versus recurrences



Number at risk

Time (months)	0	2	4	6	8	10	12	14	16	18	20	22	24	26	28	30
Strata Recurrences	11	8	7	5	4	4	4	2	2	2	2	2	1	1	0	0
Strata Primary tumors	58	50	45	38	32	23	19	15	10	10	7	4	3	3	1	1