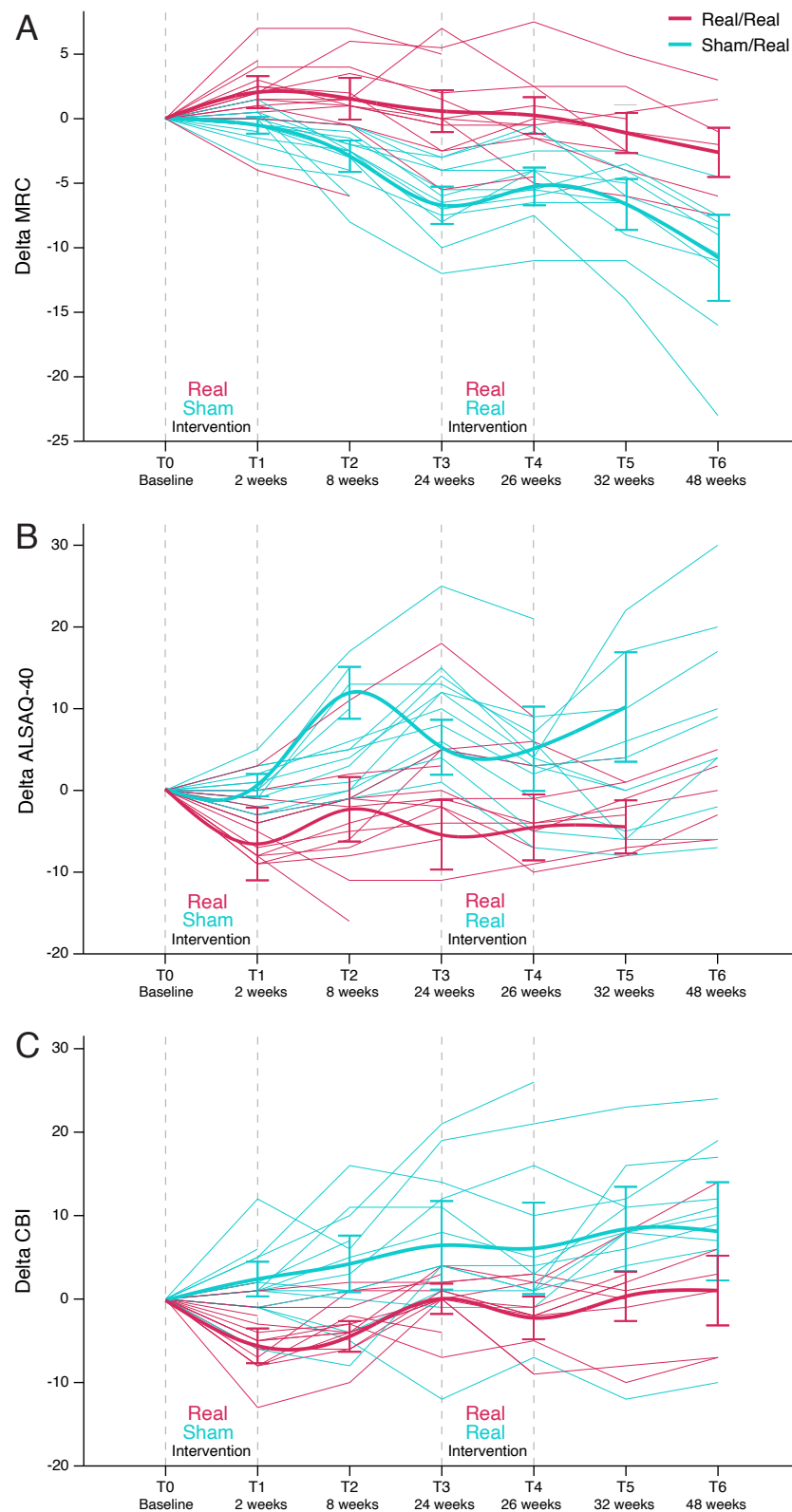
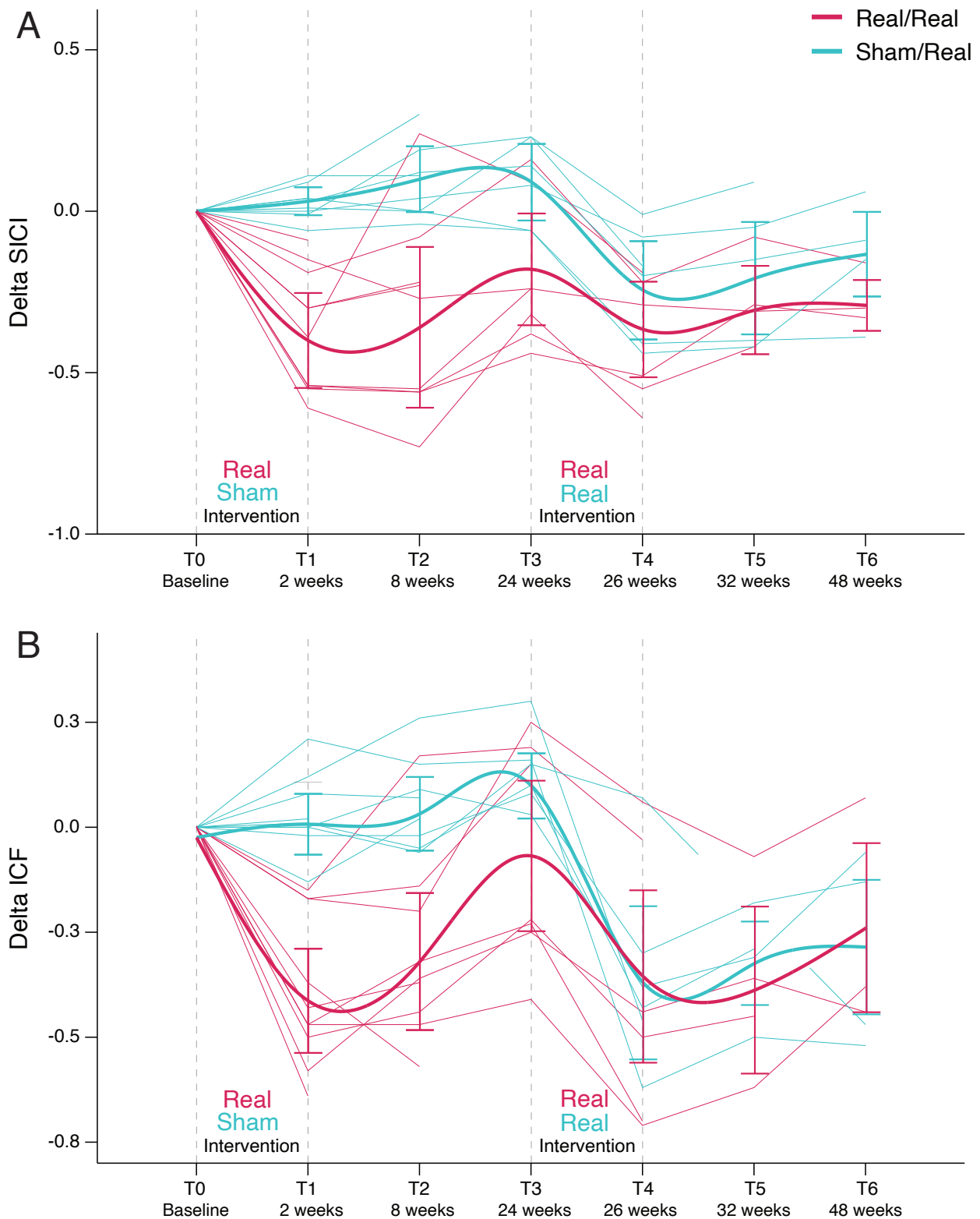


Supplementary Figure 1. Clinical measures of included participants at different time points for A) global MRC scores, B) ALSAQ-40 and C) CBI.



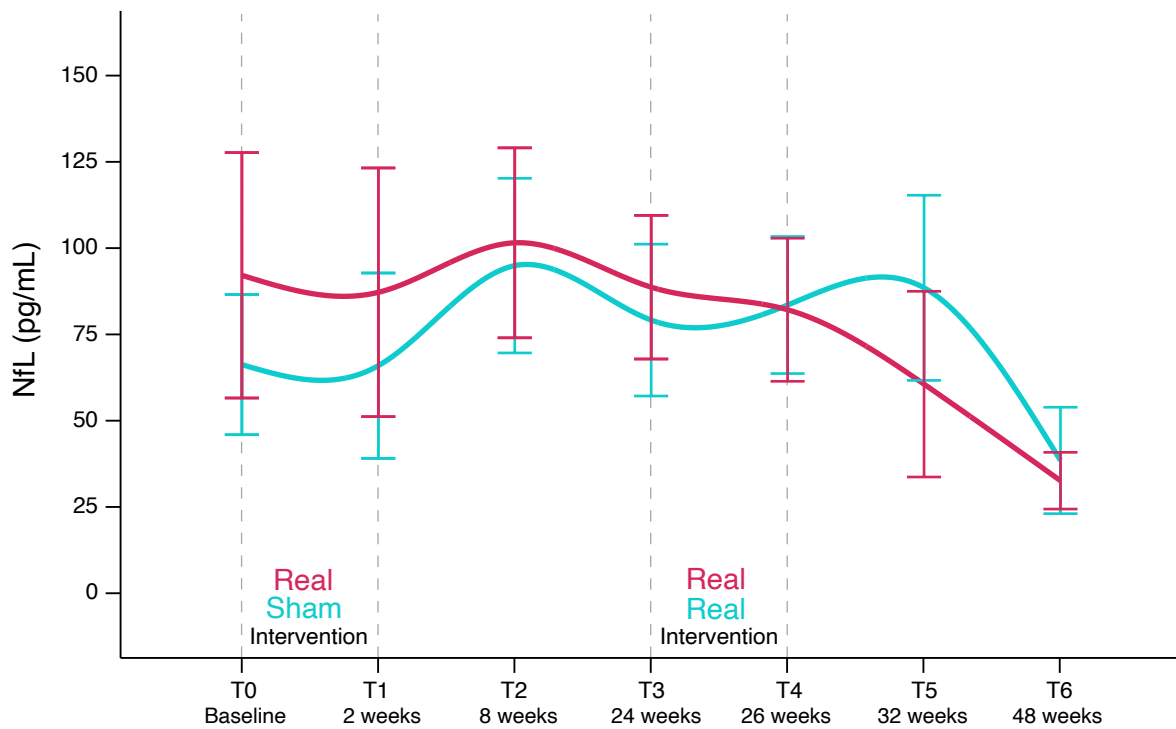
Legend. Average Δ compared to T0 (baseline) of clinical assessments at T1 (after 2-week treatment of randomized sham (Group 1) or real (Group 2) tDCS, at T2 (8-week follow-up), T3 (24-week follow-up), T4 (after 2-week open-label real tDCS treatment), T5 (32-week follow-up), T6 (48-week follow-up). tDCS = transcranial direct current stimulation; MRC = strength evaluated with the Medical Research Council megascore; ALSAQ-40 = amyotrophic lateral sclerosis assessment questionnaire-40-item scale; CBI = caregiver burden inventory. Thick lines represent median and 95% CI (with missing data computed by linear interpolation) while thin lines represent single participants.

Supplementary Figure 2. Neurophysiological measures of included participants at different time points for A) SICI and B) ICF.



Legend. Average Δ compared to T0 (baseline) of clinical assessments and neurophysiological parameters at T1 (after 2-week treatment of randomized sham (Group 1) or real (Group 2) tDCS, at T2 (8-week follow-up), T3 (24-week follow-up), T4 (after 2-week open-label real tDCS treatment), T5 (32-week follow-up), T6 (48-week follow-up). tDCS = transcranial direct current stimulation; SICI = mean short interval intracortical inhibition (1, 2, 3 ms); ICF = mean intracortical facilitation (7, 10, 15 ms). Thick lines represent median and 95% CI (with missing data computed by linear interpolation) while thin lines represent single participants.

Supplementary Figure 3. Serum neurofilament light measurements of included participants at different time points.



Legend. Average serum neurofilament light concentration at T0 (baseline), at T1 (after 2-week treatment of randomized sham (Group 1) or real (Group 2) tDCS), at T2 (8-week follow-up), T3 (24-week follow-up), T4 (after 2-week open-label real tDCS treatment), T5 (32-week follow-up), T6 (48-week follow-up). tDCS = transcranial direct current stimulation; NFL = serum neurofilament light. Thick lines represent median and 95% CI (with missing data computed by linear interpolation).