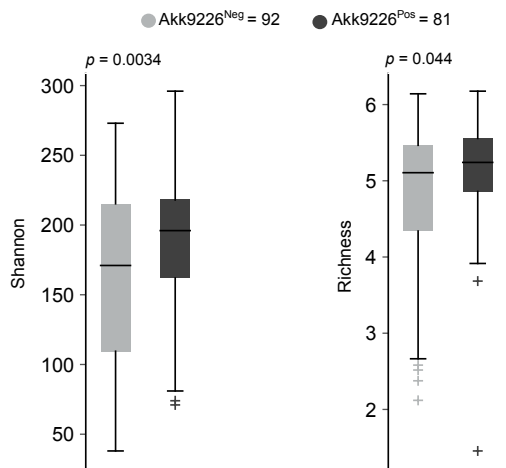
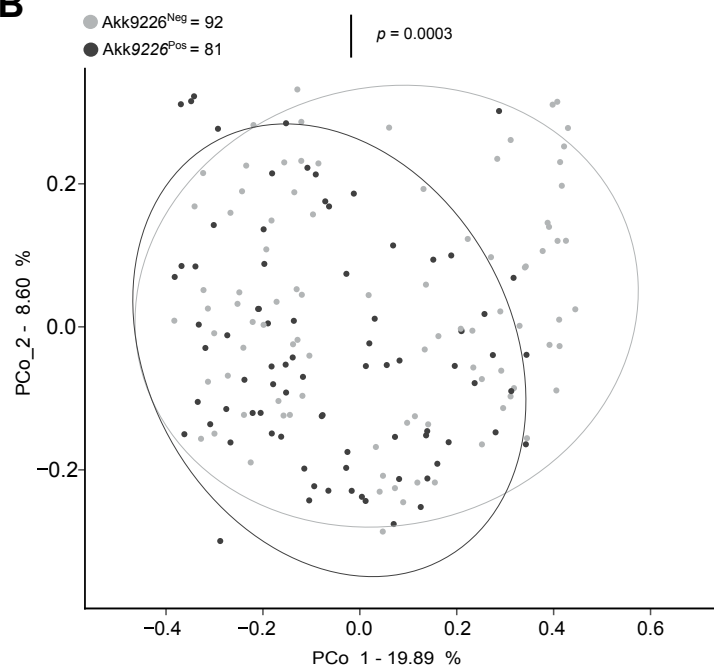


Akk9226^{Neg} Akk9226^{Pos}

A



B



C

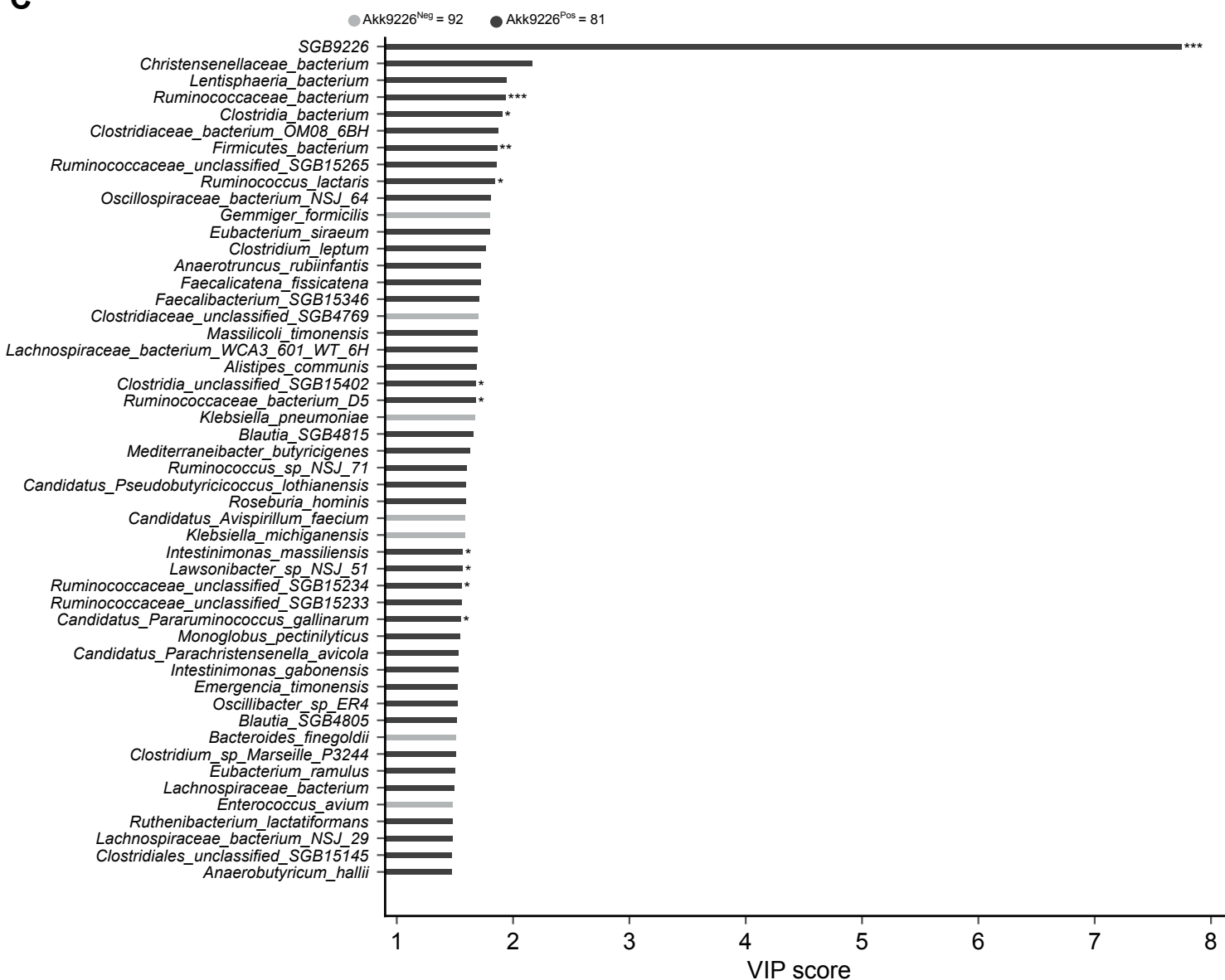


Figure S1

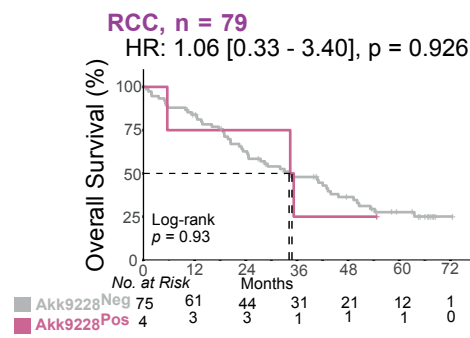
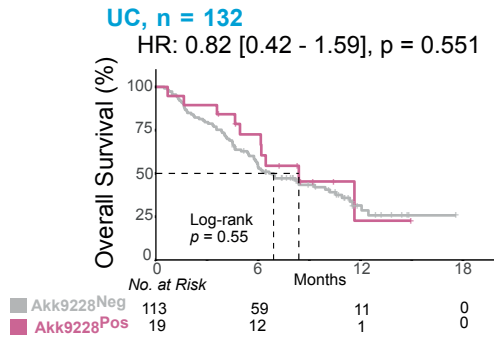
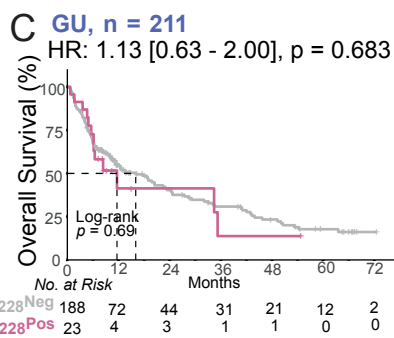
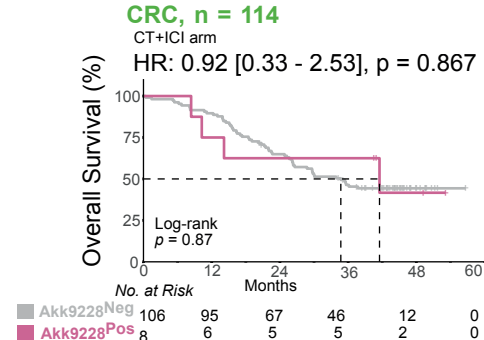
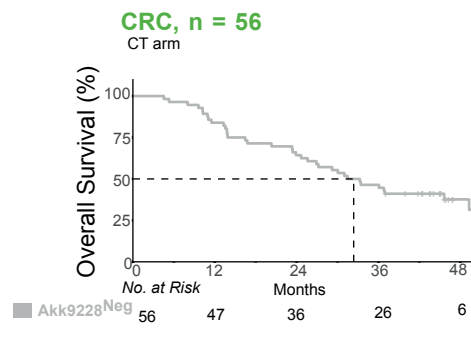
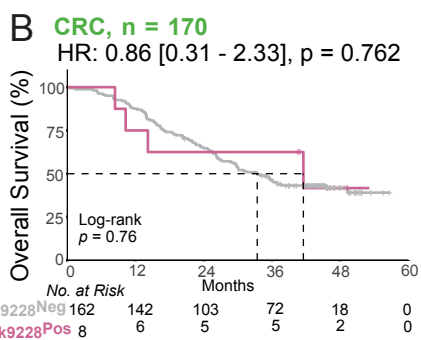
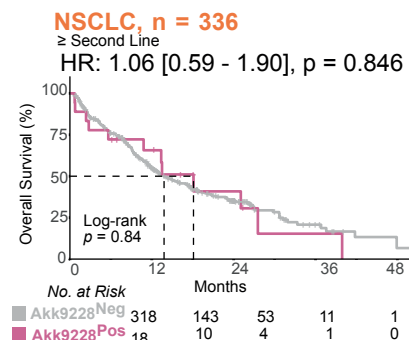
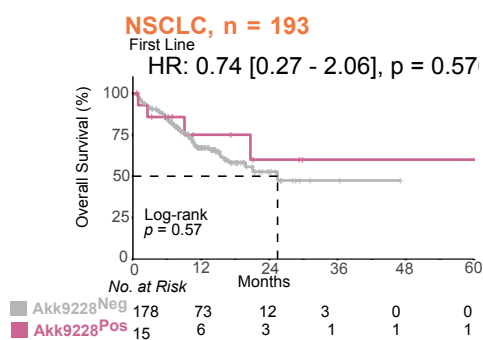
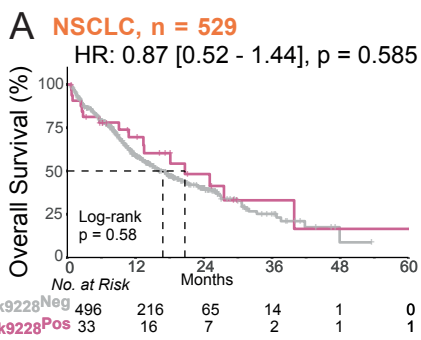
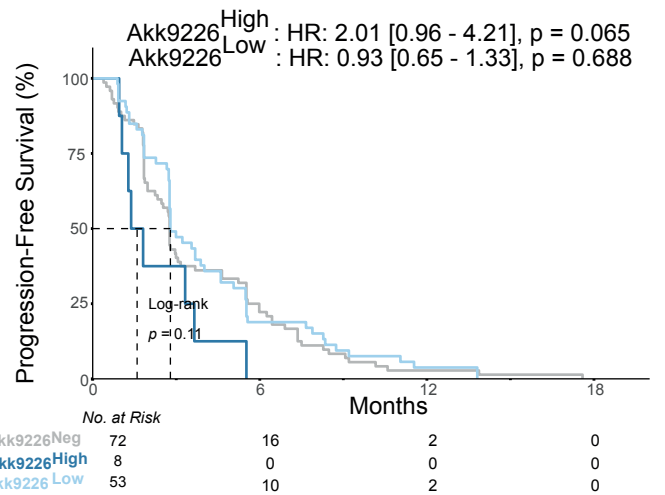
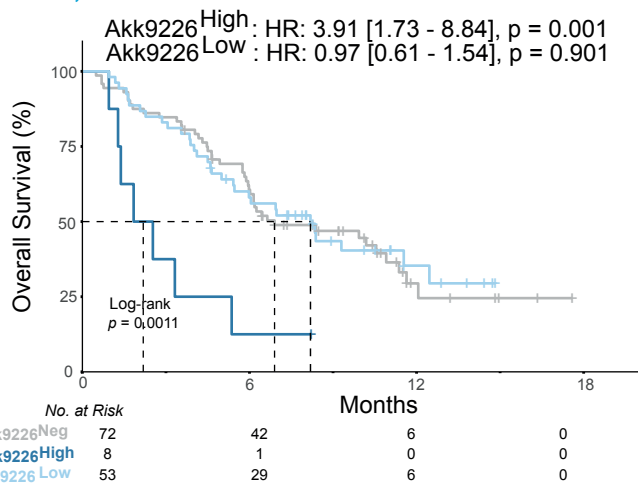


Figure S2

■ Akk9226^{Neg} ■ Akk9226^{High} ■ Akk9226^{Low}

A UC, n = 133



B RCC, n = 82

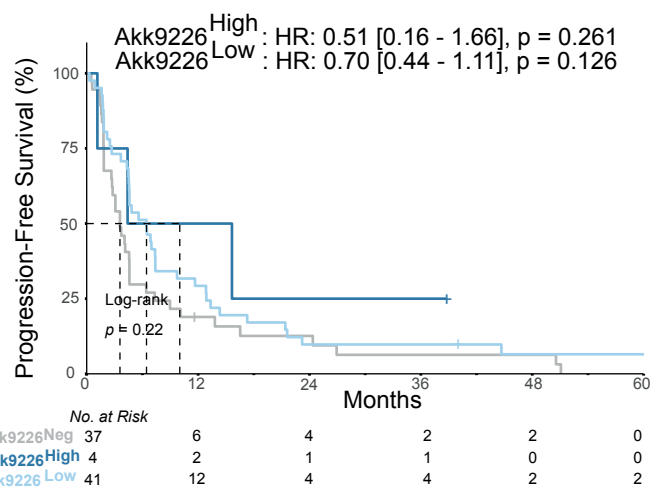
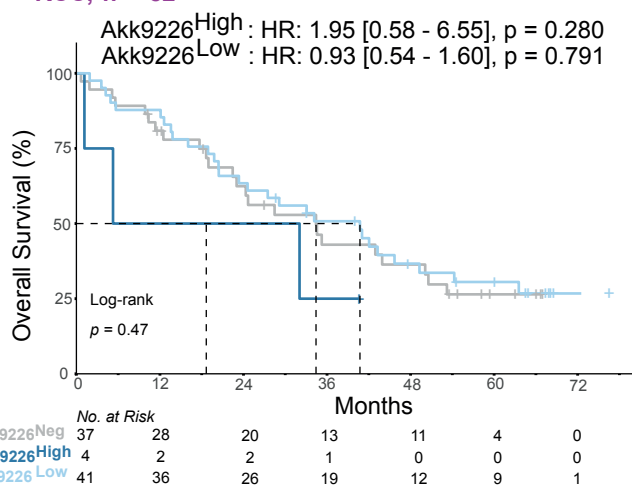


Figure S3

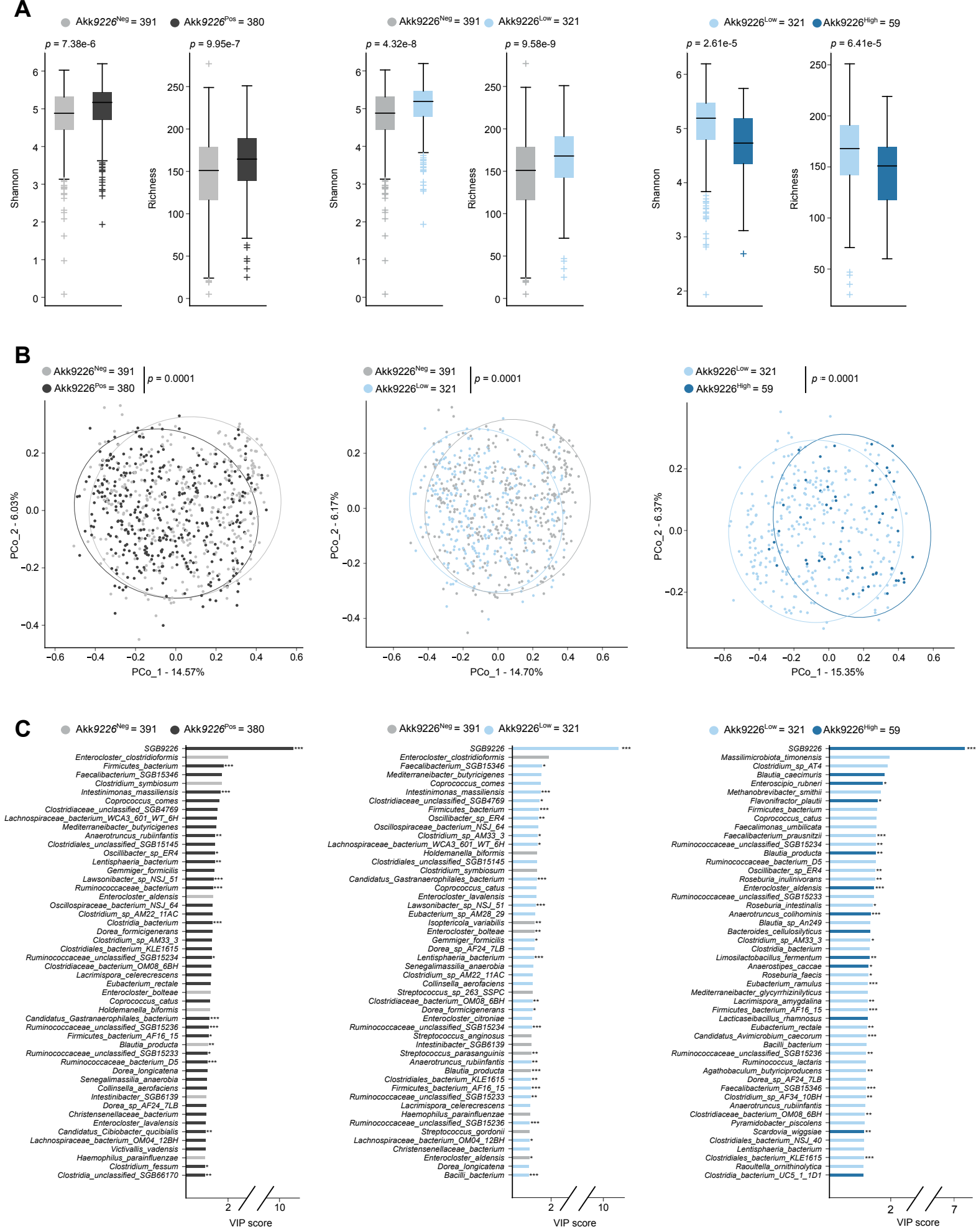
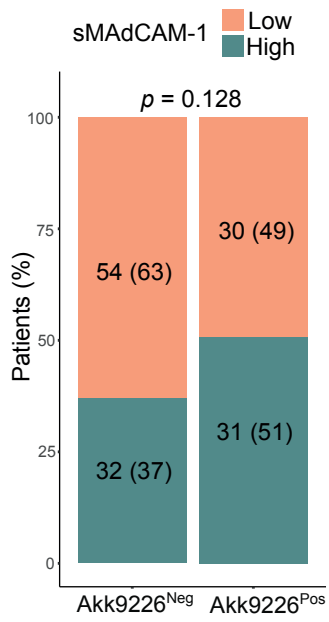
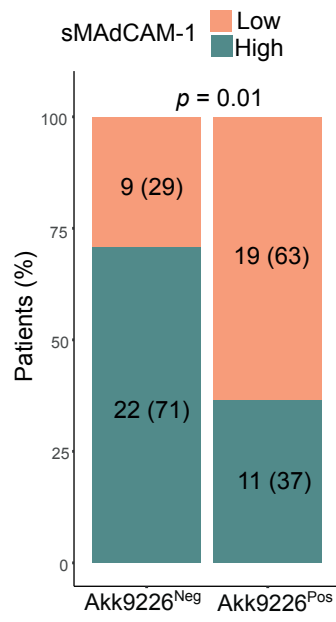


Figure S4

A NSCLC, n = 147



B UC, n = 61



C CRC, n = 150

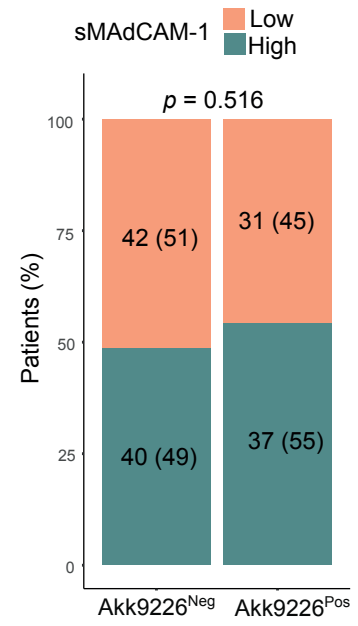
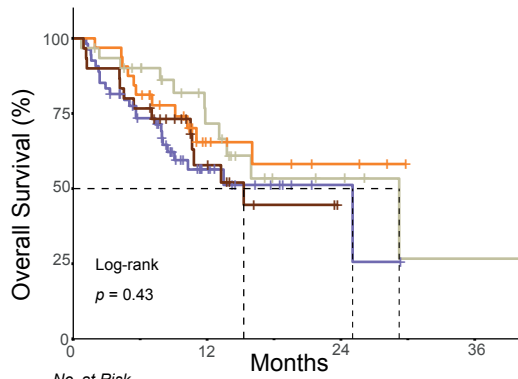


Figure S5

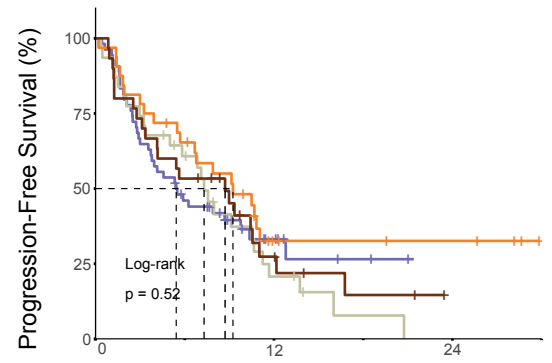
A NSCLC, n = 147

sMAdCAM-1^{High}&Akk9226^{Pos}: HR: 0.63 [0.31, 1.30], *p* = 0.209
 sMAdCAM-1^{High}&Akk9226^{Neg}: HR: 0.61 [0.29, 1.25], *p* = 0.176
 sMAdCAM-1^{Low}&Akk9226^{Pos}: HR: 0.90 [0.46, 1.79], *p* = 0.771

sMAdCAM-1^{High}&Akk9226^{Pos}: HR: 1.12 [0.67, 1.87], *p* = 0.673
 sMAdCAM-1^{High}&Akk9226^{Neg}: HR: 0.72 [0.42, 1.26], *p* = 0.253
 sMAdCAM-1^{Low}&Akk9226^{Pos}: HR: 0.99 [0.58, 1.69], *p* = 0.968



No. at Risk		0	12	24	36
sMAdCAM-1 ^{Low} & Akk9226 ^{Neg}	54	14	2	0	0
sMAdCAM-1 ^{High} & Akk9226 ^{Pos}	31	14	4	1	0
sMAdCAM-1 ^{High} & Akk9226 ^{Neg}	32	11	6	0	0
sMAdCAM-1 ^{Low} & Akk9226 ^{Pos}	30	11	0	0	0

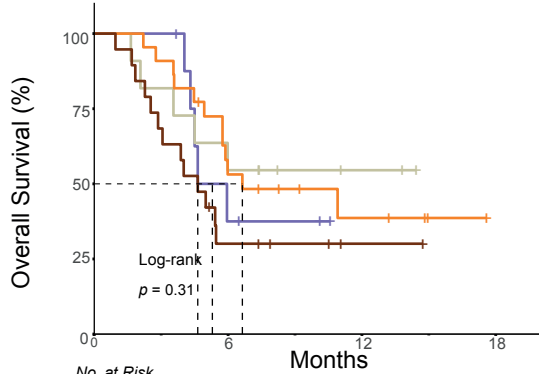


No. at Risk		0	12	24
sMAdCAM-1 ^{Low} & Akk9226 ^{Neg}	54	8	0	0
sMAdCAM-1 ^{High} & Akk9226 ^{Pos}	31	5	0	0
sMAdCAM-1 ^{High} & Akk9226 ^{Neg}	32	6	4	0
sMAdCAM-1 ^{Low} & Akk9226 ^{Pos}	30	6	0	0

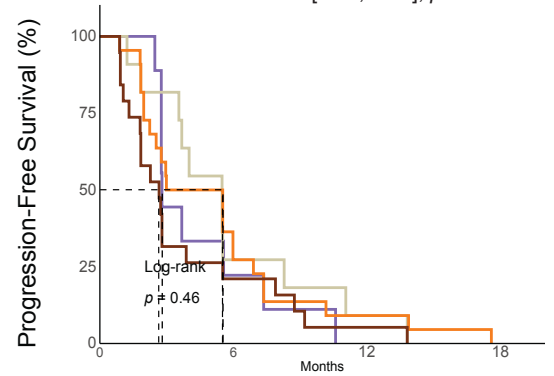
B UC, n = 61

sMAdCAM-1^{High}&Akk9226^{Pos}: HR: 0.72 [0.21, 2.50], *p* = 0.604
 sMAdCAM-1^{High}&Akk9226^{Neg}: HR: 0.82 [0.29, 2.33], *p* = 0.704
 sMAdCAM-1^{Low}&Akk9226^{Pos}: HR: 1.55 [0.55, 4.35], *p* = 0.409

sMAdCAM-1^{High}&Akk9226^{Pos}: HR: 0.79 [0.32, 1.91], *p* = 0.597
 sMAdCAM-1^{High}&Akk9226^{Neg}: HR: 0.82 [0.37, 1.81], *p* = 0.625
 sMAdCAM-1^{Low}&Akk9226^{Pos}: HR: 1.27 [0.57, 2.83], *p* = 0.551



No. at Risk		0	6	12	18
sMAdCAM-1 ^{Low} & Akk9226 ^{Neg}	9	3	0	0	0
sMAdCAM-1 ^{High} & Akk9226 ^{Pos}	11	6	2	0	0
sMAdCAM-1 ^{High} & Akk9226 ^{Neg}	22	11	4	0	0
sMAdCAM-1 ^{Low} & Akk9226 ^{Pos}	19	5	1	0	0



No. at Risk		0	6	12	18
sMAdCAM-1 ^{Low} & Akk9226 ^{Neg}	9	2	0	0	0
sMAdCAM-1 ^{High} & Akk9226 ^{Pos}	11	3	1	0	0
sMAdCAM-1 ^{High} & Akk9226 ^{Neg}	22	6	2	0	0
sMAdCAM-1 ^{Low} & Akk9226 ^{Pos}	19	4	1	0	0

Figure S6

Table S1. Cancer patients' characteristics

Characteristic	NSCLC	UC	RCC	CRC			p-value*
	n = 556	n = 133	n = 82	Overall, n = 184	CT arm, n = 61	CT+ICI arm, n = 123	
Age (years) Median [Range]	65 [24 - 92]	68 [44 - 87]	61 [31 - 81]	61 [36 - 75]	61 [36 - 74]	60 [39 - 75]	0.52**
Gender No. (%)							0.952
Female	202 (36%)	26 (20%)	19 (23%)	79 (43%)	26 (43%)	53 (43%)	
Male	354 (64%)	107 (80%)	63 (77%)	105 (57%)	35 (57%)	70 (57%)	
BMI Median [Range]	23.7 [14.9 - 39.9]	24.6 [14.5 - 54.0]	25.0 [19.1 - 31.6]	24.4 [16.4 - 45.0]	23.9 [17.6 - 35.5]	24.9 [16.4 - 45.0]	0.187**
Unknown	14	10	1	-	-	-	
ECOG Performance Status No. (%)							0.983
0	195 (37%)	48 (36%)	36 (44%)	157 (85%)	52 (85%)	105 (85%)	
1 or 2	322 (62%)	84 (64%)	45 (56%)	27 (15%)	9 (15%)	18 (15%)	
≥3	5 (1%)	-	-	-	-	-	
Unknown	34	1	1	-	-	-	
Histology No. (%)							
Adenocarcinoma	383 (69%)	-	-	-	-	-	
Squamous Cell NSCLC	122 (22%)	-	-	-	-	-	
Other NSCLC	51 (9%)	-	-	-	-	-	
Urothelial Carcinoma	-	128 (96%)	-	-	-	-	
Other Bladder	-	5 (4%)	-	-	-	-	
Clear Cell RCC	-	-	80 (98%)	-	-	-	
Papillary RCC	-	-	2 (2%)	-	-	-	
Line No. (%)							
1	204 (36.7%)	-	10 (12%)	184 (100%)	61 (100%)	123 (100%)	
≥2	351 (63.1%)	132 (100%)	72 (88%)	-	-	-	
Adj/Neoad	1 (0.2%)	-	-	-	-	-	
Unknown	-	1	-	-	-	-	
PD-L1 No. (%)							
<50	229 (57%)	-	-	-	-	-	
≥50	175 (43%)	-	-	-	-	-	
<25%	-	56 (56%)	-	-	-	-	
≥25%	-	44 (44%)	-	-	-	-	
Unknown	152	33	-	-	-	-	
ABX No. (%)							0.751
Yes	107 (19%)	24 (18%)	17 (21%)	20 (11%)	6 (10%)	14 (11%)	
No	449 (81%)	109 (82%)	64 (79%)	164 (89%)	55 (90%)	109 (89%)	
Unknown	-	-	1	-	-	-	
Number of metastatic sites No. (%)							0.64
0	33 (9%)	-	-	-	-	-	
1	114 (30%)	-	-	77 (42%)	27 (44%)	50 (41%)	
≥2	232 (61%)	-	-	107 (58%)	34 (56%)	73 (59%)	
Unknown	177	-	-	-	-	-	
Site of Primary Tumor No. (%)							0.567
Left Colon	-	-	-	102 (55%)	32 (52%)	70 (57%)	
Right Colon	-	-	-	82 (45%)	29 (48%)	53 (43%)	
Time to Metastases No. (%)							0.532
Metachronous	-	-	-	22 (12%)	6 (10%)	16 (13%)	
Synchronous	-	-	-	162 (88%)	55 (90%)	107 (87%)	
Liver-only metastatic CRC No. (%)							0.329
No	-	-	-	135 (73%)	42 (69%)	93 (76%)	
Yes	-	-	-	49 (27%)	19 (31%)	30 (24%)	
Microsatellite status No. (%)							> 0.999***
dMMR/MSI-H	-	-	-	11 (6%)	4 (7%)	7 (6%)	
pMMR/MSS	-	-	-	170 (94%)	57 (93%)	113 (94%)	
Unknown	-	-	-	3	0	3	
Immunoscore IC No. (%)							0.449***
High	-	-	-	47 (35%)	18 (39%)	29 (33%)	
Low	-	-	-	88 (65%)	28 (61%)	60 (67%)	
Unknown	-	-	-	49	15	34	
Samples No.							
Plasma	147	61	0	162	54	108	
Stool	556	133	82	172	56	116	
Tumor	-	-	-	135	46	89	
Paired	147	61	-	107	36	71	

*Fisher's exact test; **Wilcoxon rank sum test; ***Pearson's Chi-squared test

No.: Number

ABX: Antibiotics in the range from 60 days before to 42 days after the start of therapy

NSCLC: Non-Small Cell Lung Cancer

UC: Urothelial Cancer

RCC: Renal Cell Carcinoma

CRC: Colorectal Cancer

IC: Immune-checkpoint

Table S2A. Cancer patients' characteristics (Akk9226 prevalence)																	
Characteristic	NSCLC				UC				RCC				CRC				
	TOTAL, N = 556	Akk9226 Neg, N = 285	Akk9226 Pos, N = 271	p-value*	TOTAL, N = 133	Akk9226 Neg, N = 72	Akk9226 Pos, N = 61	p-value*	TOTAL, N = 82	Akk9226 Neg, N = 37	Akk9226 Pos, N = 45	p-value*	Overall, N = 172	Akk9226 Neg, N = 91	Akk9226 Pos, N = 81	p-value*	
Age (years) Median [Range]	65 [24 - 92]	64 [24 - 92]	67 [43 - 89]	0.006	68 [44 - 87]	64 [44 - 85]	70 [55 - 87]	<0.001	61 [31 - 81]	61 [36 - 78]	61 [31 - 81]	0.695	61 [36 - 75]	59 [36 - 75]	62 [37 - 75]	0.425	
Gender No. (%)				0.432				0.085				0.453				0.616	
Female	202 (36%)	108 (38%)	94 (35%)		26 (20%)	18 (25%)	8 (13%)		19 (23%)	10 (27%)	9 (20%)		73 (42%)	37 (41%)	36 (44%)		
Male	354 (64%)	177 (62%)	177 (65%)		107 (80%)	54 (75%)	53 (87%)		63 (77%)	27 (73%)	36 (80%)		99 (58%)	54 (59%)	45 (56%)		
BMI Median [Range]	23.7 [14.9 - 39.9]	23.5 [15.1 - 39.7]	23.9 [14.9 - 39.9]	0.171	24.6 [14.5 - 54.0]	24.5 [14.5 - 42.0]	25.5 [19.2 - 54.0]	0.196	25.0 [19.1 - 31.6]	23.9 [20.1 - 31.6]	25.8 [19.1 - 31.6]	0.264	24.5 [16.4 - 45.0]	24.8 [16.4 - 40.4]	24.1 [16.8 - 45.0]	0.593	
Unknown	14	9	5		10	2	8		1	1	0						
ECOG Performance Status No. (%)				0.003				0.668				0.368				0.048	
0	195 (37%)	85 (32%)	110 (43%)		48 (36%)	27 (38%)	21 (34%)		36 (44%)	14 (39%)	22 (49%)		145 (84%)	72 (79%)	73 (90%)		
1 or 2	322 (62%)	175 (66%)	147 (57%)		84 (64%)	44 (62%)	40 (66%)		45 (56%)	22 (61%)	23 (51%)		27 (16%)	19 (21%)	8 (9.9%)		
≥3	5 (1.0%)	5 (1.9%)	0 (0%)														
Unknown	34	20	14		1	1	0		1	1	0						
Histology No. (%)				0.012				>0.999				0.201					
Adenocarcinoma	383 (76%)	211 (81%)	172 (71%)														
Squamous NSCLC	122 (24%)	51 (19%)	71 (29%)														
Other NCSLC	0 (0%)	0 (0%)	0 (0%)														
Unknown	51	23	28														
Urothelial Carcinoma					128 (96%)	69 (96%)	59 (97%)										
Other Bladder					5 (3.8%)	3 (4.2%)	2 (3.3%)										
Clear Cell Renal Carcinoma									80 (98%)	35 (95%)	45 (100%)						
Papillary Renal Carcinoma									2 (2.4%)	2 (5.4%)	0 (0%)						
Line No. (%)				0.224								0.749					
1	205 (37%)	112 (39%)	93 (34%)						10 (12%)	5 (14%)	5 (11%)		172 (100%)	91 (100%)	81 (100%)		
≥2	351 (63%)	173 (61%)	178 (66%)		132 (100%)	71 (100%)	61 (100%)		72 (88%)	32 (86%)	40 (89%)						
Unknown					1	1	0										
PD-L1 No. (%)				0.678				0.746									
<50	229 (57%)	113 (56%)	116 (58%)														
≥50	175 (43%)	90 (44%)	85 (42%)														
Unknown	152	82	70		33	17	16										
Low: <25%					56 (56%)	30 (55%)	26 (58%)										
High: ≥25%					44 (44%)	25 (45%)	19 (42%)										
ABX No. (%)				0.371				0.648				0.675				0.608	
Yes	107 (19%)	59 (21%)	48 (18%)		24 (18%)	14 (19%)	10 (16%)		17 (21%)	7 (19%)	10 (23%)		19 (11%)	9 (9.9%)	10 (12%)		
No	449 (81%)	226 (79%)	223 (82%)		109 (82%)	58 (81%)	51 (84%)		64 (79%)	30 (81%)	34 (77%)		153 (89%)	82 (90%)	71 (88%)		
Unknown									1	0	1						
Number of metastatic sites No. (%)				0.434												0.605	
0	33 (8.7%)	17 (8.7%)	16 (8.7%)														
1	114 (30%)	53 (27%)	61 (33%)										75 (44%)	38 (42%)	37 (46%)		
≥2	232 (61%)	125 (64%)	107 (58%)										97 (56%)	53 (58%)	44 (54%)		
Unknown	177	90	87														
Treatment_arm																0.237	
FOLFOXIRI/Bev													56 (33%)	26 (29%)	30 (37%)		
FOLFOXIRI/Bev/Atezo													116 (67%)	65 (71%)	51 (63%)		
Site of Primary Tumor No. (%)																0.235	
Left Colon													98 (57%)	48 (53%)	50 (62%)		
Right Colon													74 (43%)	43 (47%)	31 (38%)		
Time to Metastases No. (%)																0.959	
Metachronous													21 (12%)	11 (12%)	10 (12%)		
Synchronous													151 (88%)	80 (88%)	71 (88%)		
Liver Only Disease No. (%)																0.963	
No													125 (73%)	66 (73%)	59 (73%)		
Yes													47 (27%)	25 (27%)	22 (27%)		
Microsatellite status No. (%)																>0.999	
dMMR/MSI-H													10 (5.9%)	5 (5.6%)	5 (6.3%)		
pMMR/MSS													159 (94%)	84 (94%)	75 (94%)		
Unknown													3	2	1		
Immunoscore No. (%)																0.134	
High													45 (36%)	21 (30%)	24 (43%)		
Low													81 (64%)	49 (70%)	32 (57%)		
Unknown													46	21	25		

Fisher's exact test; *Wilcoxon rank sum test; ** Pearson's Chi-squared test
No.: Number
ABX: Antibiotics in the range from 60 days before to 42 days after the start of therapy
NSCLC: Non-Small Cell Lung Cancer
UC: Urothelial Cancer
RCC: Renal Cell Carcinoma
CRC: Colorectal Cancer
IC: Immune-checkpoint

Table S2B. Cancer patients' characteristics (Akk relative abundance)																					
Characteristic	NSCLC				UC					RCC				CRC							
	TOTAL_N = 556	Akk9226 High_N = 48	Akk9226 Low_N = 223	Akk9226 Neg_N = 285	p-value*	TOTAL_N = 133	Akk9226 High_N = 8	Akk9226 Low_N = 53	Akk9226 Neg_N = 72	p-value*	TOTAL_N = 81	Akk9226 High_N = 4	Akk9226 Low_N = 41	Akk9226 Neg_N = 37	p-value*	Overall_N = 172	Akk9226 High_N = 21	Akk9226 Low_N = 60	Akk9226 Neg_N = 91	p-value*	
Age (years) Median [Range]	65 [24 - 92]	67 [44 - 83]	66 [43 - 89]	64 [24 - 92]	0.022	68 [44 - 87]	70 [55 - 79]	71 [57 - 87]	64 [44 - 85]	<0.001	61 [31 - 81]	62 [55 - 76]	61 [31 - 81]	61 [36 - 78]	0.899	61 [36 - 75]	64 [46 - 75]	61 [37 - 74]	59 [36 - 75]	0.141	
Gender No. (%)					0.5					0.124					0.619					0.698	
Female	202 (36%)	14 (29%)	80 (36%)	108 (38%)		26 (20%)	2 (25%)	6 (11%)	18 (25%)		19 (23%)	0 (0%)	9 (22%)	10 (27%)		73 (42%)	8 (38%)	28 (47%)	37 (41%)		
Male	354 (64%)	34 (71%)	143 (64%)	177 (62%)		107 (80%)	6 (75%)	47 (89%)	54 (75%)		63 (77%)	4 (100%)	32 (78%)	27 (73%)		99 (55%)	13 (62%)	32 (53%)	54 (59%)		
BMI Median [Range]	23.7 [14.9 - 39.9]	23.7 [15.4 - 34.3]	23.9 [14.9 - 39.9]	23.5 [15.1 - 39.7]	0.391	24.6 [14.5 - 54.0]	22.4 [20.7 - 26.6]	25.9 [19.2 - 54.0]	24.5 [14.5 - 42.0]	0.059	25.0 [19.1 - 31.6]	23.6 [19.8 - 27.0]	25.9 [19.1 - 31.6]	23.9 [20.1 - 31.6]	0.235	24.5 [16.4 - 45.0]	23.9 [18.1 - 30.4]	24.3 [16.8 - 45.0]	24.8 [16.4 - 40.4]	0.647	
Unknown	14	0	5	9		10	2	6	2		1	0	1	1							
ECOG Performance Status No. (%)					0.017					0.089					0.454					0.114	
0	195 (37%)	16 (35%)	94 (45%)	85 (32%)		48 (36%)	0 (0%)	21 (40%)	27 (38%)		36 (44%)	1 (25%)	21 (51%)	14 (39%)		145 (84%)	18 (86%)	55 (92%)	72 (79%)		
1 or 2	322 (62%)	30 (65%)	117 (55%)	175 (66%)		84 (64%)	8 (100%)	32 (60%)	44 (62%)		45 (56%)	3 (75%)	20 (49%)	22 (61%)		27 (16%)	3 (14%)	5 (8.3%)	19 (21%)		
≥3	5 (1.0%)	0 (0%)	0 (0%)	5 (1.9%)																	
Unknown	34	2	12	20		1	0	0	1		1	0	0	1							
Histology No. (%)					0.009					>0.999					0.296						
Adenocarcinoma	383 (76%)	26 (60%)	146 (73%)	211 (81%)																	
Squamous NSCLC	122 (24%)	17 (40%)	54 (27%)	51 (19%)																	
Other NSCLC	0 (0%)	0 (0%)	0 (0%)	0 (0%)																	
Unknown	51	5	23	23																	
Urothelial Carcinoma						128 (96%)	8 (100%)	51 (96%)	69 (96%)												
Other Bladder						5 (3.8%)	0 (0%)	2 (3.8%)	3 (4.2%)												
Clear Cell Renal Carcinoma											80 (98%)	4 (100%)	41 (100%)	35 (95%)							
Papillary Renal Carcinoma											2 (2.4%)	0 (0%)	0 (0%)	2 (5.4%)							
Line No. (%)					0.441					>0.999											
1	205 (37%)	15 (31%)	78 (35%)	112 (39%)							10 (12%)	0 (0%)	5 (12%)	5 (14%)		172 (100%)	21 (100%)	60 (100%)	91 (100%)		
≥2	351 (63%)	33 (69%)	145 (65%)	173 (61%)		132 (100%)	8 (100%)	53 (100%)	71 (100%)		72 (88%)	4 (100%)	36 (88%)	32 (86%)							
adj/neoad	0 (0%)	0 (0%)	0 (0%)	0 (0%)																	
Unknown						1	0	0	1												
PD-L1 No. (%)					0.91					0.806											
<50	229 (57%)	21 (57%)	95 (58%)	113 (56%)																	
≥50	175 (43%)	16 (43%)	69 (42%)	90 (44%)																	
Unknown	152	11	59	82		33	2	14	17												
Low: <25%						56 (56%)	3 (50%)	23 (59%)	30 (55%)												
High: ≥25%						44 (44%)	3 (50%)	16 (41%)	25 (45%)												
ABX No. (%)					0.403					0.66					0.049					0.835	
Yes	107 (19%)	11 (23%)	37 (17%)	59 (21%)		24 (18%)	2 (25%)	8 (15%)	14 (19%)		17 (21%)	3 (75%)	7 (18%)	7 (19%)		19 (11%)	2 (9.5%)	8 (13%)	9 (9.9%)		
No	449 (81%)	37 (77%)	186 (83%)	226 (79%)		109 (82%)	6 (75%)	45 (85%)	58 (81%)		64 (79%)	1 (25%)	33 (83%)	30 (81%)		153 (89%)	19 (90%)	52 (87%)	82 (90%)		
Unknown											1	0	1	0							
Number of metastatic sites No. (%)					0.08															0.628	
0	33 (8.7%)	0 (0%)	16 (11%)	17 (8.7%)																	
1	114 (30%)	16 (47%)	45 (30%)	53 (27%)												75 (44%)	8 (38%)	29 (48%)	38 (42%)		
≥2	232 (61%)	18 (53%)	89 (59%)	125 (64%)												97 (56%)	13 (62%)	31 (52%)	53 (58%)		
Unknown	177	14	73	90																	
Treatment arm																				0.161	
FOLFOXIRI/Bev																56 (33%)	5 (24%)	25 (42%)	26 (29%)		
FOLFOXIRI/Bev/Atezo																116 (67%)	16 (76%)	35 (58%)	65 (71%)		
Site of Primary Tumor No. (%)																				0.494	
Left Colon																98 (57%)	13 (62%)	37 (62%)	48 (53%)		
Right Colon																74 (43%)	8 (38%)	23 (38%)	43 (47%)		
Time to Metastases No. (%)																				0.947	
Metachronous																21 (12%)	2 (9.5%)	8 (13%)	11 (12%)		
Synchronous																125 (73%)	19 (90%)	43 (72%)	80 (88%)		
Liver Only Disease No. (%)																				0.922	
No																151 (88%)	16 (76%)	52 (87%)	66 (73%)		
Yes																47 (27%)	5 (24%)	17 (28%)	25 (27%)		
Microsatellite status No. (%)																				0.801	
dMMR/MSI-H																10 (5.9%)	2 (9.5%)	3 (5.1%)	5 (5.6%)		
pMMR/MSS																159 (94%)	19 (90%)	56 (95%)	84 (94%)		
Unknown																3	0	1	2		
Immunoscore No. (%)																				0.214	
High																45 (36%)	6 (55%)	18 (40%)	21 (30%)		
Low																81 (64%)	5 (45%)	27 (60%)	49 (70%)		
Unknown																46	10	15	21		

*Fisher's exact test; **Wilcoxon rank sum test; ***Pearson's Chi-squared test

No.: Number

ABX: Antibiotics in the range from 60 days before to 42 days after the start of therapy

NSCLC: Non-Small Cell Lung Cancer

UC: Urothelial Cancer

RCC: Renal Cell Carcinoma

CRC: Colorectal Cancer

IC: Immune-checkpoint

Table S3A. Multivariable analysis for overall survival of Akk9226 relative abundance in 542 NSCLC

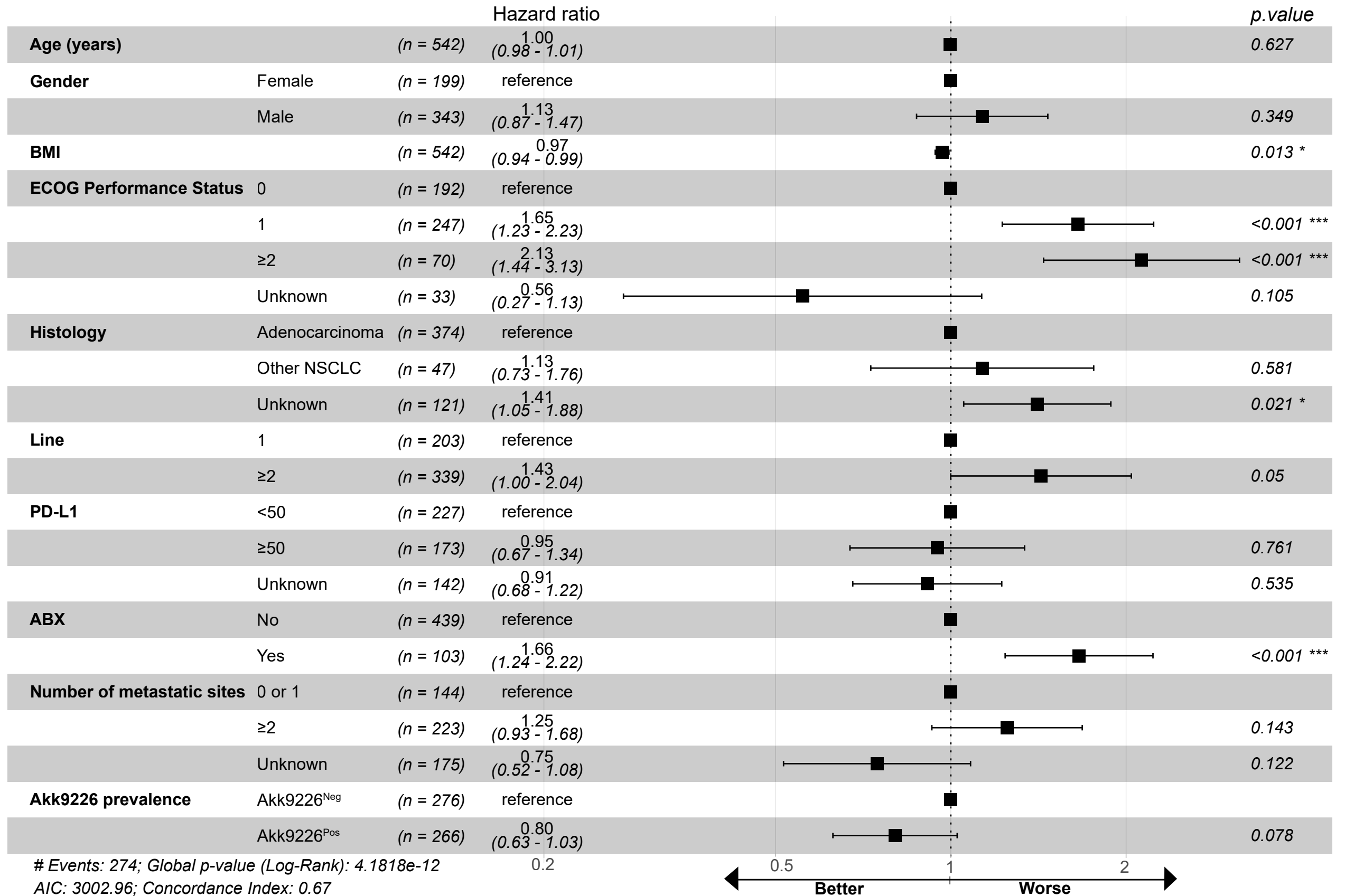


Table S3B. Multivariable analysis for overall survival of Akk9226 relative abundance in 542 NSCLC

			Hazard ratio		<i>p</i> .value
Age (years)		(<i>n</i> = 542)	1.00 (0.98 - 1.01)		0.643
Gender	Female	(<i>n</i> = 199)	reference		
	Male	(<i>n</i> = 343)	1.11 (0.86 - 1.44)		0.422
BMI		(<i>n</i> = 542)	0.97 (0.94 - 0.99)		0.012 *
ECOG Performance Status	0	(<i>n</i> = 192)	reference		
	1	(<i>n</i> = 247)	1.61 (1.19 - 2.17)		0.002 **
	≥2	(<i>n</i> = 70)	2.14 (1.45 - 3.16)		<0.001 ***
	Unknown	(<i>n</i> = 33)	0.55 (0.27 - 1.13)		0.103
Histology	Adenocarcinoma	(<i>n</i> = 374)	reference		
	Other NSCLC	(<i>n</i> = 47)	1.12 (0.72 - 1.74)		0.609
	Unknown	(<i>n</i> = 121)	1.43 (1.07 - 1.92)		0.015 *
Line	1	(<i>n</i> = 203)	reference		
	≥2	(<i>n</i> = 339)	1.41 (0.98 - 2.01)		0.063
PD-L1	<50	(<i>n</i> = 227)	reference		
	≥50	(<i>n</i> = 173)	0.97 (0.68 - 1.37)		0.852
	Unknown	(<i>n</i> = 142)	0.95 (0.71 - 1.28)		0.74
ABX	No	(<i>n</i> = 439)	reference		
	Yes	(<i>n</i> = 103)	1.66 (1.24 - 2.22)		<0.001 ***
Number of metastatic sites	0 or 1	(<i>n</i> = 144)	reference		
	≥2	(<i>n</i> = 223)	1.28 (0.95 - 1.73)		0.1
	Unknown	(<i>n</i> = 175)	0.77 (0.53 - 1.11)		0.164
Akk9226 Relative abundance	Akk9226 ^{Low}	(<i>n</i> = 218)	reference		
	Akk9226 ^{High}	(<i>n</i> = 48)	1.79 (1.18 - 2.73)		0.007 **
	Akk9226 ^{Neg}	(<i>n</i> = 276)	1.39 (1.07 - 1.82)		0.014 *

Events: 274; Global *p*-value (Log-Rank): 6.0043e-13

AIC: 2998.24; Concordance Index: 0.67

0.2

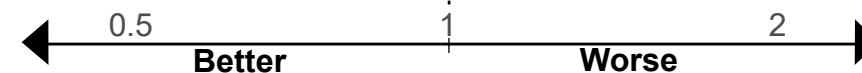
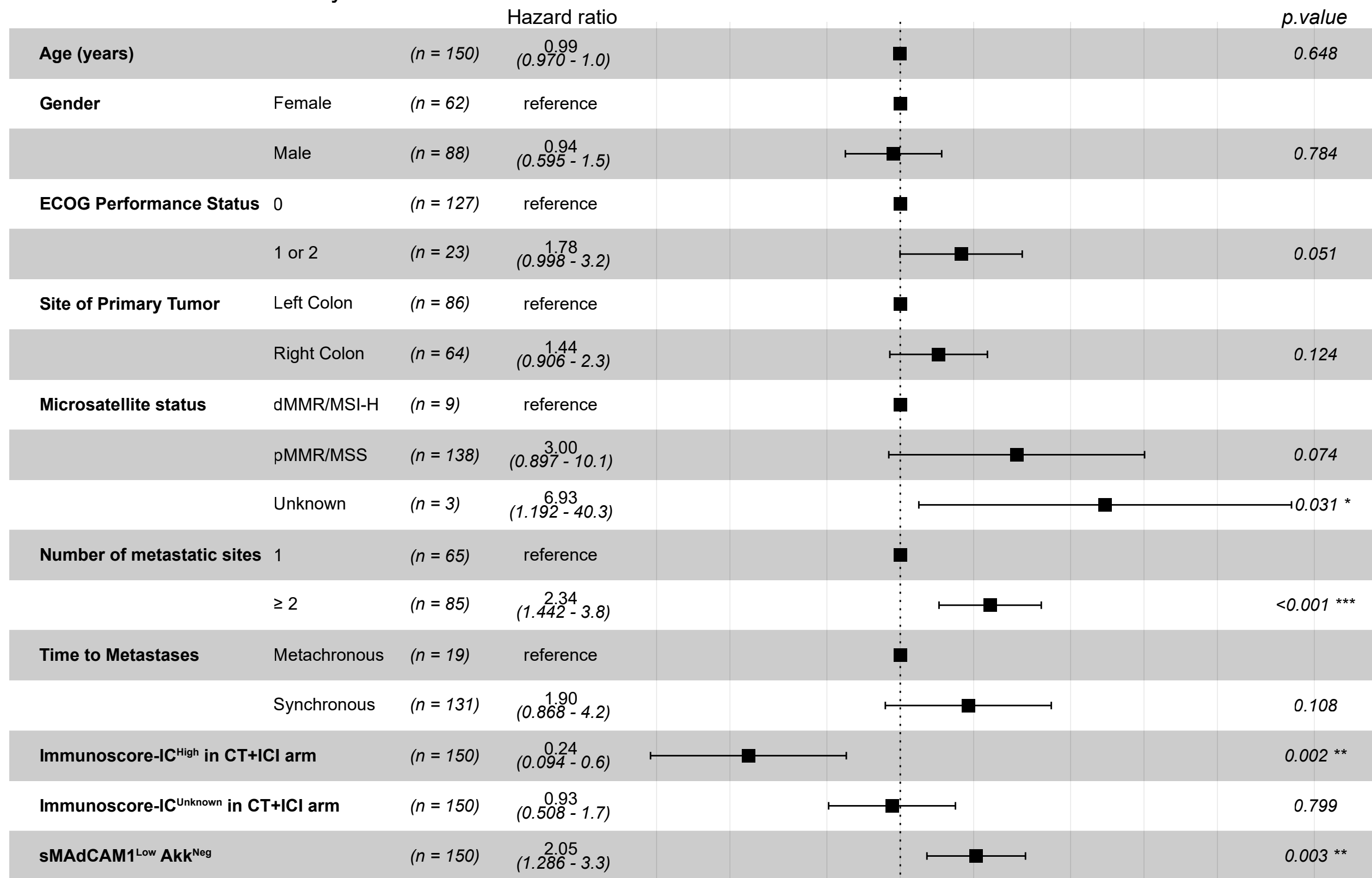


Table S4. Multivariable analysis for overall survival of Akk^{Neg} and sMAdCAM-1^{Low} in 150 CRC



Events: 86; Global *p*-value (Log-Rank): 1.6451e-07

AIC: 761.01; Concordance Index: 0.71

