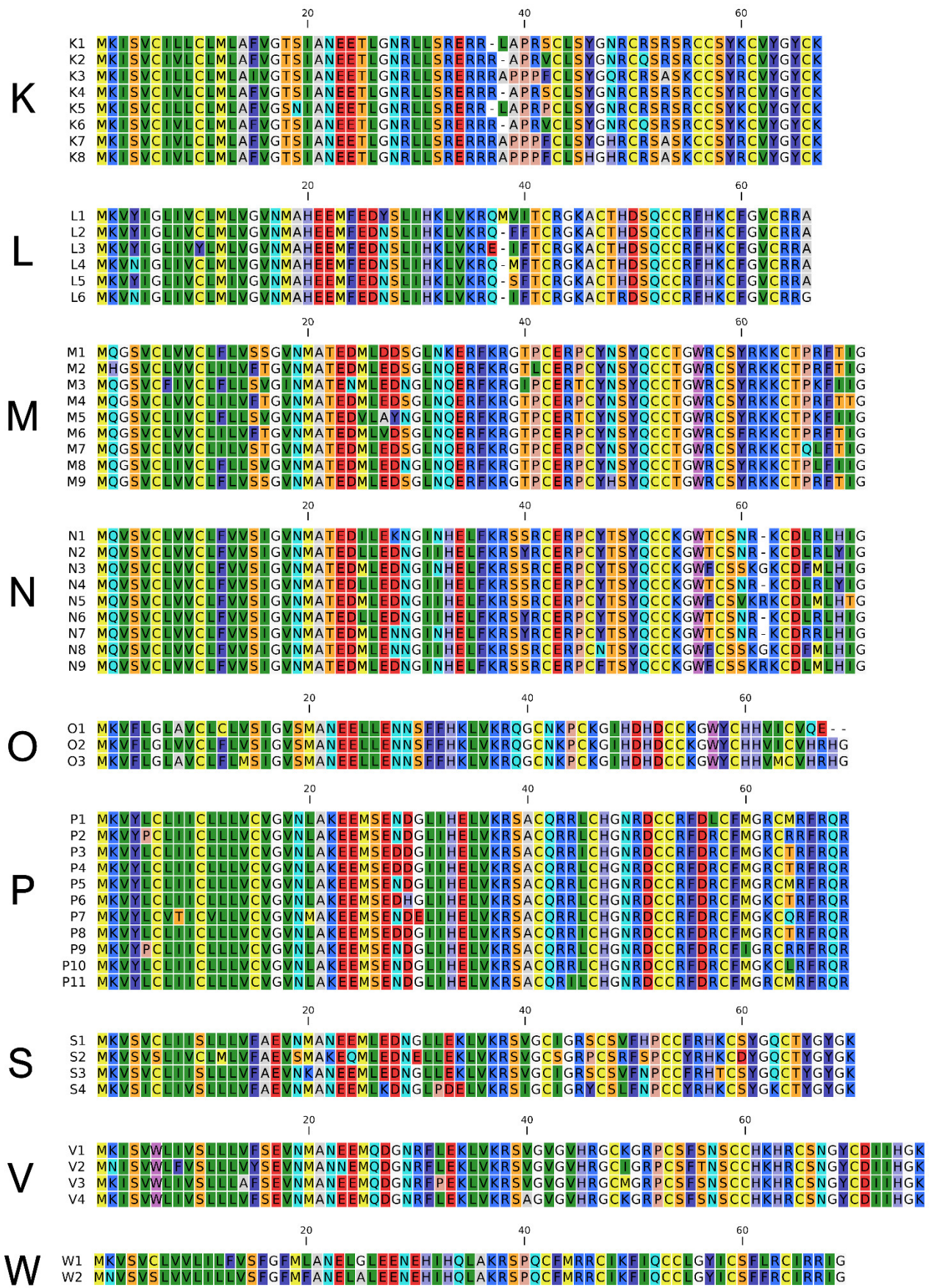


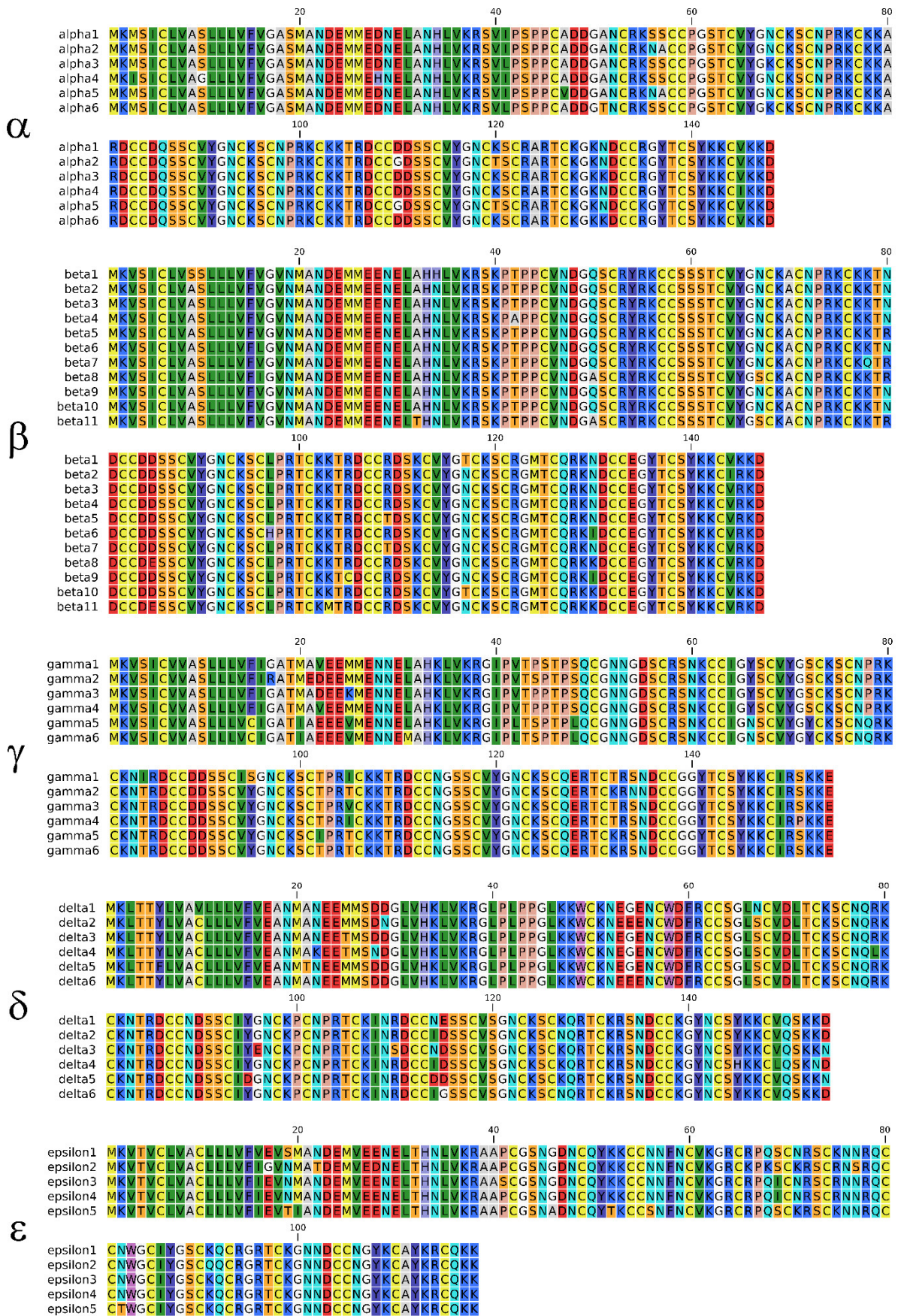
**Figure S1:** Multiple sequence alignment of the precursor protein sequences belonging to the sCRP-I groups A-I, excluding those including only one member.





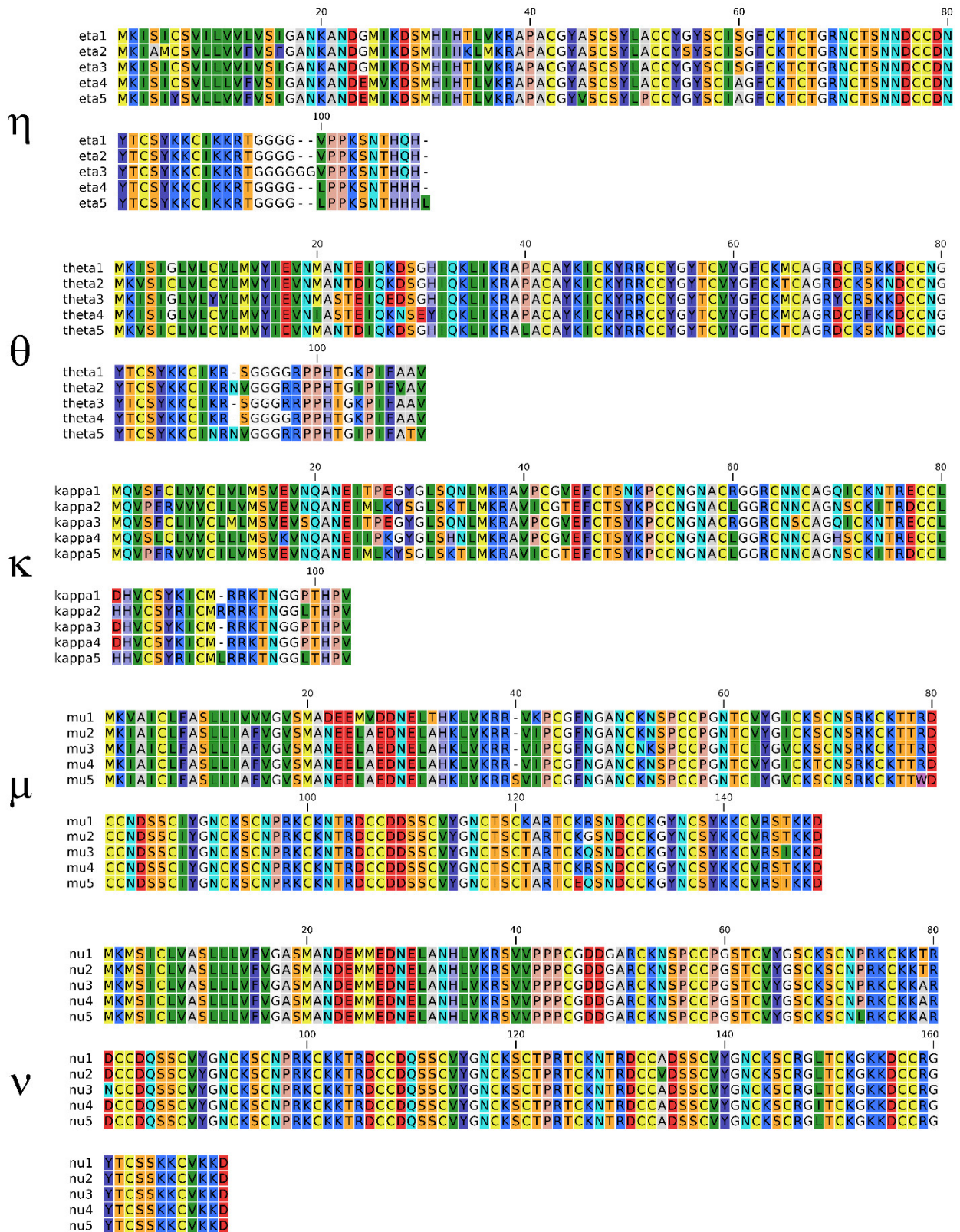
**Figure S2:** Multiple sequence alignment of the precursor protein sequences belonging to the sCRP-I groups K-W, excluding those including only one member.





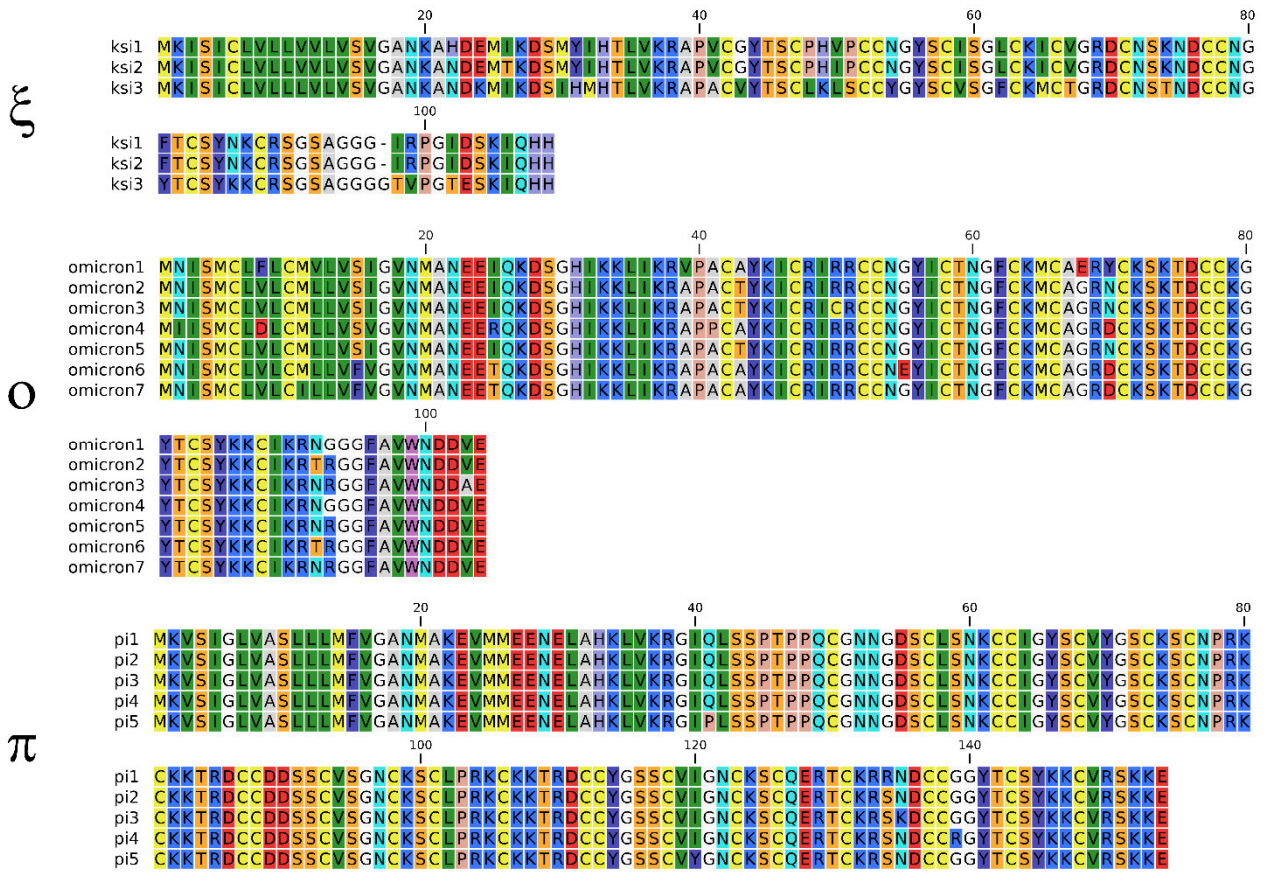
**Figure S3:** Multiple sequence alignment of the precursor protein sequences belonging to the mCRP-I groups  $\alpha$ - $\epsilon$ , excluding those including only one member.



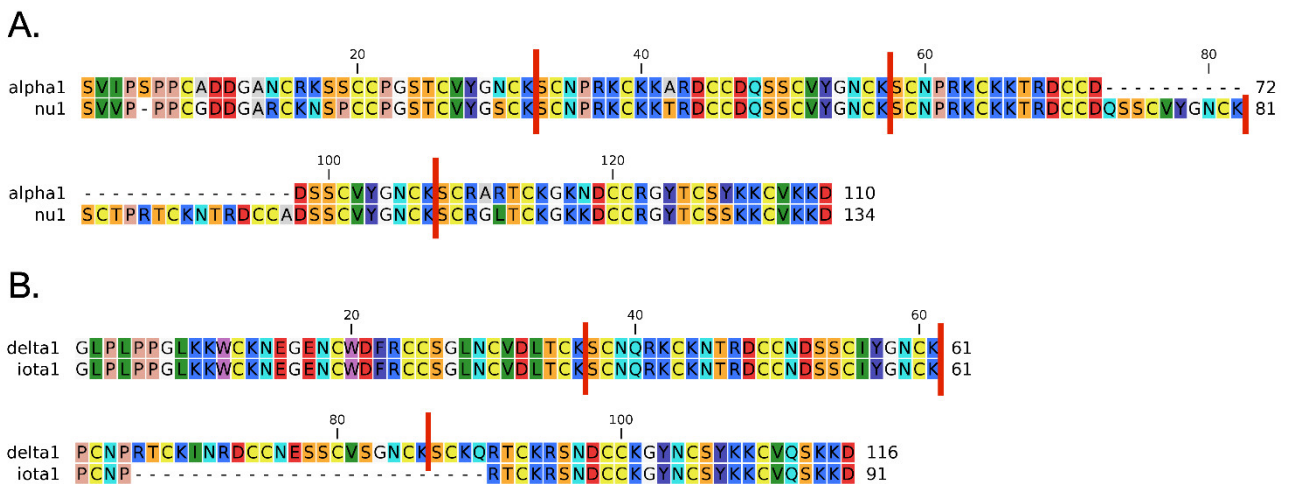


**Figure S4:** Multiple sequence alignment of the precursor protein sequences belonging to the mCRP-I groups η-v, excluding those including only one member.



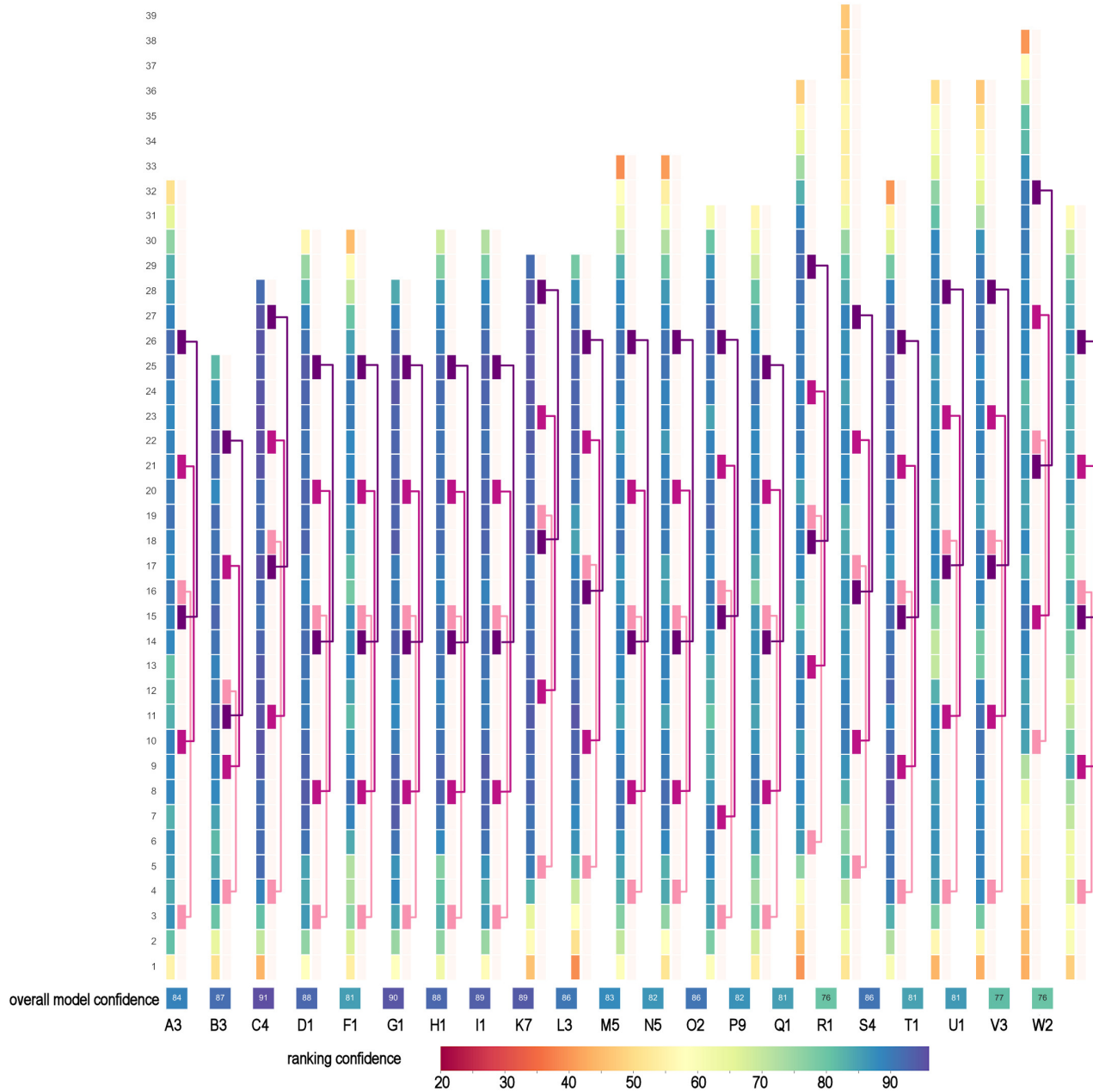


**Figure S5:** Multiple sequence alignment of the precursor protein sequences belonging to the mCRP-I groups  $\xi$ - $\pi$ , excluding those including only one member.



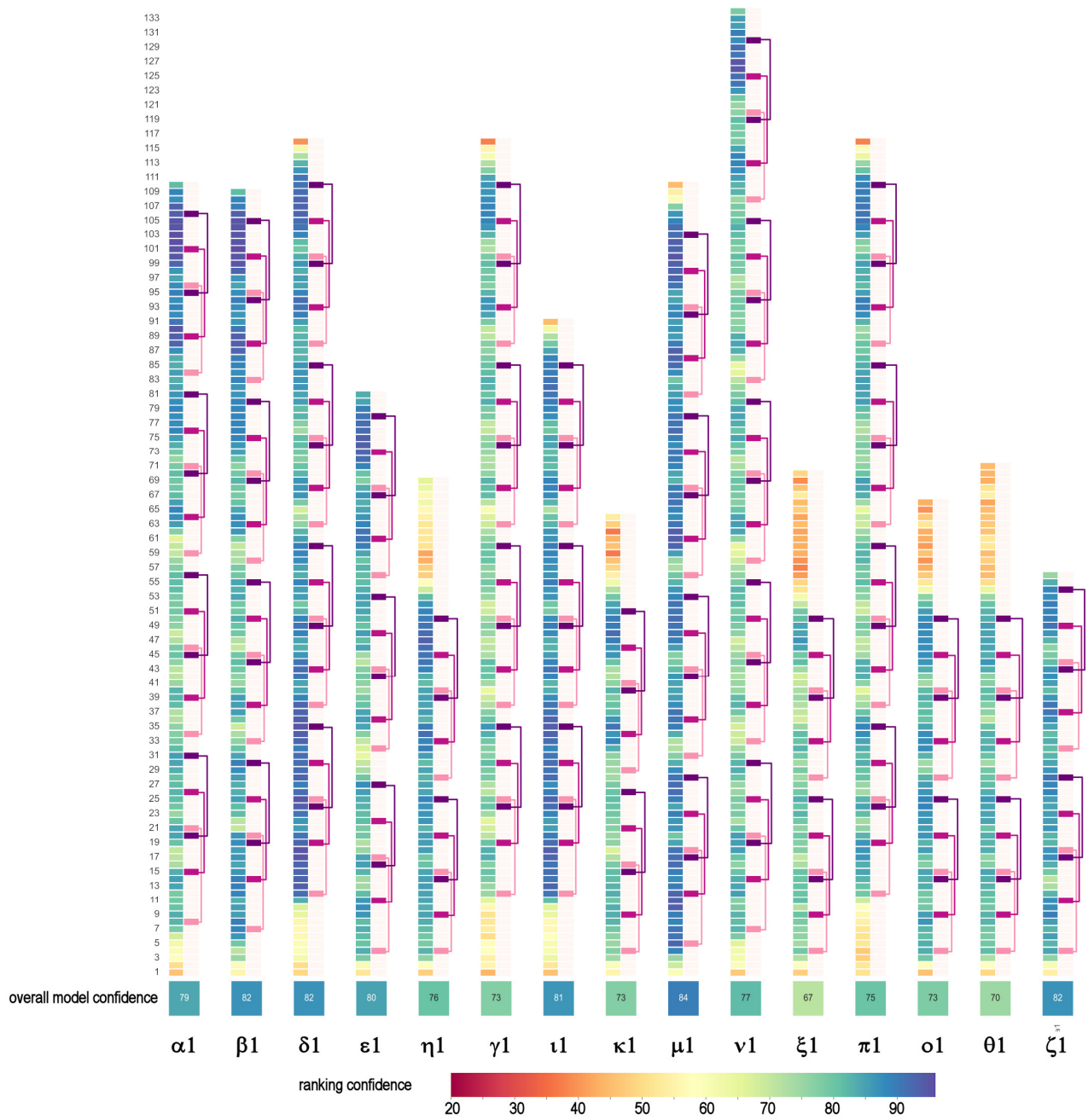
**Figure S6:** Panel A: alignment between representative members of the mCRP-I subfamilies  $\alpha$  and  $\nu$ . Panel B: alignment between representative members of the mCRP-I subfamilies  $\delta$  and  $\iota$ .





**Figure S7:** summary of the AlphaFold prediction scores obtained for representative members of the different sCRP-I sequence groups.





**Figure S8:** summary of the AlphaFold prediction scores obtained for representative members of the different mCRP-I sequence groups.