

Longitudinal Cognitive Changes in Genetic Frontotemporal Dementia Within the GENFI Cohort

Jackie M. Poos, MSc, Amy MacDougall, PhD, Esther van den Berg, PhD, Lize C. Jiskoot, PhD, Janne M. Papma, PhD, Emma L. van der Ende, MD, PhD, Harro Seelaar, MD, PhD, Lucy L. Russell, PhD, Georgia Peakman, MSc, Rhian Convery, MSc, Yolande A.L. Pijnenburg, MD, PhD, Fermin Moreno, MD, PhD, Raquel Sanchez-Valle, PhD, Barbara Borroni, MD, Robert Laforce, Jr., MD, PhD, Marie-Claire Doré, PhD, Mario Masellis, MD, PhD, Maria Carmela Tartaglia, MD, Caroline Graff, MD, PhD, Daniela Galimberti, PhD, James B. Rowe, FRCRP, PhD, Elizabeth Finger, MD, Matthias Synofzik, MD, Rik Vandenberghe, MD, PhD, Alexandre Mendonça, MD, PhD, Pietro Tiraboschi, MD, Isabel Santana, MD, PhD, Simon Ducharme, MD, Christopher Butler, FRCP, PhD, Alexander Gerhard, MRCP, MD, Johannes Levin, MD, Adrian Danek, MD, Markus Otto, MD, Isabelle Le Ber, MD, PhD, Florence Pasquier, MD, PhD, John van Swieten, MD, PhD, and Jonathan D. Rohrer, FRCP, PhD, on behalf of the Genetic FTD Initiative (GENFI)

Correspondence

Dr. Rohrer
j.rohrer@ucl.ac.uk

Neurology® 2022;99:e281-e295. doi:10.1212/WNL.0000000000200384

Abstract

Background and Objectives

Disease-modifying therapeutic trials for genetic frontotemporal dementia (FTD) are underway, but sensitive cognitive outcome measures are lacking. The aim of this study was to identify such cognitive tests in early stage FTD by investigating cognitive decline in a large cohort of genetic FTD pathogenic variant carriers and by investigating whether gene-specific differences are moderated by disease stage (asymptomatic, prodromal, and symptomatic).

Methods

C9orf72, *GRN*, and *MAPT* pathogenic variant carriers as well as controls underwent a yearly neuropsychological assessment covering 8 cognitive domains as part of the Genetic FTD Initiative, a prospective multicenter cohort study. Pathogenic variant carriers were stratified according to disease stage using the global Clinical Dementia Rating (CDR) plus National Alzheimer's Coordinating Center (NACC) FTLD score (0, 0.5, or ≥ 1). Linear mixed-effects models were used to investigate differences between genetic groups and disease stages as well as the 3-way interaction between time, genetic group, and disease stage.

Results

A total of 207 *C9orf72*, 206 *GRN*, and 86 *MAPT* pathogenic variant carriers and 255 controls were included. *C9orf72* pathogenic variant carriers performed lower on attention, executive function, and verbal fluency from CDR plus NACC FTLD 0 onwards, with

From the Department of Neurology (J.M. Poos, E.v.d.B., L.C.J., J.M. Papma, E.L.v.d.E., H.S., J.v.S.), Erasmus MC University Medical Center, Rotterdam, the Netherlands; Dementia Research Centre (J.M. Poos, L.C.J., L.L.R., G.P., R.C., J.D.R.), Department of Neurodegenerative Disease, UCL Institute of Neurology; Department of Medical Statistics (A.M.), London School of Hygiene and Tropical Medicine, UK; Department of Neurology (Y.A.L.P.), Alzheimer Center, Amsterdam University Medical Center, Amsterdam Neuroscience, the Netherlands; Cognitive Disorders Unit (F.M.), Department of Neurology, Donostia University Hospital, San Sebastian, Gipuzkoa; Alzheimer's Disease and Other Cognitive Disorders Unit (R.S.-V.), Neurology Service, Hospital Clínic, Institut d'Investigacions Biomèdiques August Pi I Sunyer, University of Barcelona, Spain; Centre for Neurodegenerative Disorders (B.B.), Neurology Unit, Department of Clinical and Experimental Sciences, University of Brescia, Italy; Clinique Interdisciplinaire de Mémoire (R.L., M.-C.D.), Département des Sciences Neurologiques, Université Laval, Québec; Sunnybrook Health Sciences Centre (M.M.), Sunnybrook Research Institute and Tanz Centre for Research in Neurodegenerative Diseases (M.C.T.), University of Toronto, Ontario, Canada; Department of Geriatric Medicine (C.G.), Karolinska University Hospital-Huddinge, Stockholm, Sweden; Centro Dino Ferrari (D.G.), University of Milan; Fondazione IRCCS Ca' Granda (D.G.), Ospedale Policlinico, Neurodegenerative Diseases Unit, Milan, Italy; Department of Clinical Neurosciences (J.B.R.), University of Cambridge, UK; Department of Clinical Neurological Sciences (E.F.), University of Western Ontario, London, Canada; Department of Neurodegenerative Diseases (M.S.), Hertie-Institute for Clinical Brain Research and Center of Neurology, University of Tübingen; German Center for Neurodegenerative Diseases (DZNE) (M.S.), Tübingen, Germany; Laboratory for Cognitive Neurology (R.V.), Department of Neurosciences, KU Leuven, Belgium; Faculty of Medicine (A.M.), University of Lisbon, Portugal; Fondazione Istituto di Ricovero e Cura a Carattere Scientifico Istituto Neurologica Carlo Besta (P.T.), Milan, Italy; Faculty of Medicine (I.S.), University of Coimbra, Portugal; Department of Psychiatry (S.D.), McGill University Health Centre, McGill University, Montreal, Québec, Canada; Department of Clinical Neurology (C.B.), University of Oxford; Division of Neuroscience & Experimental Psychology (A.G.), Faculty of Medicine, Biology and Health, University of Manchester, UK; Departments of Geriatric Medicine and Nuclear Medicine (A.G.), Essen University Hospital, Germany; Department of Neurology (J.L., A.D.), Ludwig-Maximilians-University, Munich; German Center for Neurodegenerative Diseases (DZNE) (J.L.), Munich; Munich Cluster for Systems Neurology (Synergy) (J.L.); Department of Neurology (M.O.), University of Ulm, Germany; Sorbonne Université (I.L.B.), Paris Brain Institute-Institut du Cerveau-ICM, Inserm U1127, CNRS UMR 7225, AP-HP-Hôpital Pitié-Salpêtrière; Centre de Référence des Démences Rares ou Précoces (I.L.B.), IM2A, Département de Neurologie, AP-HP-Hôpital Pitié-Salpêtrière; Univ Lille (F.P.); Inserm 1172 (F.P.); and CHU (F.P.), CNR-MAJ, Labex Distalz, LiCEND, Lille, France.

Go to [Neurology.org/N](https://www.neurology.org/N) for full disclosures. Funding information and disclosures deemed relevant by the authors, if any, are provided at the end of the article.

Coinvestigators are listed at links.lww.com/WNL/B988.

The Article Processing Charge was funded by the authors.

This is an open access article distributed under the terms of the Creative Commons Attribution License 4.0 (CC BY), which permits unrestricted use, distribution, and reproduction in any medium, provided the original work is properly cited.

Glossary

bvFTD = behavioral variant frontotemporal dementia; **C9orf72** = chromosome 9 open reading frame 72; **CDR plus NACC FTLD** = Clinical Dementia Rating (CDR) scale plus National Alzheimer's Coordinating Center (NACC) frontotemporal lobar degeneration; **D-KEFS** = Delis-Kaplan Executive Function System; **FCSRT** = Free and Cued Selective Reminding Test; **FTD** = frontotemporal dementia; **GENFI** = Genetic FTD Initiative; **GRN** = progranulin; **MAPT** = microtubule-associated protein tau; **MMSE** = Mini-Mental State Examination; **PPA** = primary progressive aphasia; **TMT** = Trail-Making Test; **WMS-R** = Wechsler Memory Scale–Revised.

relatively minimal decline over time regardless of the CDR plus NACC FTLD score (i.e., disease progression). The cognitive profile in *MAPT* pathogenic variant carriers was characterized by lower memory performance at CDR plus NACC FTLD 0.5, with decline over time in language from the CDR plus NACC FTLD 0.5 stage onwards, and executive dysfunction rapidly developing at CDR plus NACC FTLD ≥ 1 . *GRN* pathogenic variant carriers declined on verbal fluency and visuoconstruction in the CDR plus NACC FTLD 0.5 stage, with progressive decline in other cognitive domains starting at CDR plus NACC FTLD ≥ 1 .

Discussion

We confirmed cognitive decline in the asymptomatic and prodromal stage of genetic FTD. Specifically, tests for attention, executive function, language, and memory showed clear differences between genetic groups and controls at baseline, but the speed of change over time differed depending on genetic group and disease stage. This confirms the value of neuropsychological assessment in tracking clinical onset and progression and could inform clinical trials in selecting sensitive end points for measuring treatment effects as well as characterizing the best time window for starting treatment.

Frontotemporal dementia (FTD) is a common cause of dementia, often presenting at a young age, with devastating effects on daily living.¹ The typical cause of FTD is neurodegeneration of the frontal and temporal lobes resulting in behavioral disturbances (behavioral variant FTD [bvFTD]) or language impairment (primary progressive aphasia [PPA]).^{2,3} FTD is highly heritable and is autosomal dominantly inherited in up to ~30% of cases. The most common causes are pathogenic variants in the microtubule-associated protein tau (*MAPT*), progranulin (*GRN*), or chromosome 9 open reading frame 72 (*C9orf72*) genes.⁴ Deficits in executive function, language, and social cognition are often predominant, but may vary in severity and progression due to the heterogeneous nature of the disease.^{1-3,5}

Research into genetic FTD has shown that disease pathology emerges years before symptom onset.⁶⁻¹³ Initiating disease-modifying interventions at this early stage of the disease may have the most profound effect because neuronal loss is minimal and cognitive functions are preserved.¹⁴ It is therefore important to identify sensitive clinical instruments that can signal disease onset and track disease progression. Identifying such instruments for this early stage of the disease is also important because they can be used as clinical end points in therapeutic trials.

Gene-specific cognitive decline during the presymptomatic period has been demonstrated by both cross-sectional and longitudinal studies.^{6,10,15-26} For example, previous reports have shown decline in memory,^{17,19,20,26} language,^{17,20,23} and social cognition^{17,19,20} in *MAPT* pathogenic variant carriers, decline in attention^{15,16,19,20}

and executive function^{15,16,18,20} in *GRN* pathogenic variant carriers, and a decline in social cognition in *C9orf72* pathogenic variant carriers.^{22,24,25} However, other studies on genetic FTD failed to find these results.^{13,21,26,27}

Most studies investigating cognitive decline in presymptomatic genetic FTD have had a small sample size, a limited number of yearly follow-ups, or did not include all 3 major causes of genetic FTD. Furthermore, most studies split their sample of pathogenic variant carriers either according to the artificial boundary of presymptomatic vs symptomatic or according to estimated years to symptomatic onset. As a result, none of the studies fully highlights the complexity of the disease trajectory.²⁸

Larger international cohort studies with longer follow-up time are crucial to identify cognitive markers that signify disease onset at the earliest stage and can measure changes during disease progression. In addition, clinical instruments for disease severity, such as the Clinical Dementia Rating scale plus National Alzheimer's Coordinating Center frontotemporal lobar degeneration module,²⁹ could stratify pathogenic variant carriers and provide valuable insight into cognitive decline during the different stages of the disease per genetic group.

This study aims to investigate longitudinal cognitive decline in genetic FTD pathogenic variant carriers. We performed a 5-year follow-up study in which we investigated baseline and longitudinal differences on neuropsychological test performance between *C9orf72*, *GRN*, and *MAPT* pathogenic variant carriers and control participants and stratified pathogenic variant carriers according to the CDR NACC FTLD global score.

Methods

Participants

Data were included from the fifth Genetic FTD Initiative (GENFI) data freeze, in which participants from confirmed genetic FTD families were recruited in 24 centers across Europe and Canada between January 30, 2012, and May 31, 2019. Pathogenic variant carriers were included in this study if they performed at least 1 or more neuropsychological assessments. A total of 207 *C9orf72*, 206 *GRN*, and 86 *MAPT* pathogenic variant carriers and 255 pathogenic variant negative family members (who served as control group) were included. A total of 109 *C9orf72*, 112 *GRN*, and 60 *MAPT* pathogenic variant carriers and 154 controls had completed at least 1 follow-up visit (Table 1). Pathogenic variant carriers were divided into 3 categories based on the CDR plus NACC FTLD global score at baseline: 0, 0.5, or ≥ 1 . Of those with a CDR plus NACC FTLD global score of ≥ 1 , 51 *C9orf72*, 27 *GRN*, and 21 *MAPT* pathogenic variant carriers met diagnostic criteria for bvFTD,² 16 *GRN* and 3 *C9orf72* pathogenic variant carriers met criteria for PPA,³ and 8 *C9orf72* pathogenic variant carriers met criteria for FTD with amyotrophic lateral sclerosis.³⁰ Ten percent of *C9orf72*, 8% of *GRN*, and 8% of *MAPT* pathogenic variant carriers progressed from CDR category 0 to 0.5, and 4% of *C9orf72*, 2% of *GRN*, and 4% of *MAPT* pathogenic variant carriers progressed to ≥ 1 . Six percent of *C9orf72*, 16% of *GRN*, and 20% of *MAPT* pathogenic variant carriers progressed from CDR category 0.5 to ≥ 1 (eTable 1, links.lww.com/WNL/B987).

Standard Protocol Approvals, Registrations, and Patient Consents

All GENFI sites had local ethical approval for the study and all participants gave written informed consent.

Procedures

Participants underwent a yearly standardized clinical assessment including the CDR plus NACC FTLD and a comprehensive neuropsychological test battery covering attention and processing speed (Wechsler Memory Scale–Revised [WMS-R] digit span forward³¹; Trail-Making Test [TMT] part A³²; Wechsler Adult Intelligence Scale–Revised Digit Symbol test³¹; Delis-Kaplan Executive Function System [D-KEFS] Color-Word Interference Test color and word naming³³), executive function (WMS-R Digit span backward³¹; TMT part B³²; D-KEFS Color-Word Interference Test ink naming³³), language (modified Camel and Cactus Test²³; Boston Naming Test [short 30-item version]³¹), verbal fluency (category fluency³¹; phonemic fluency³⁴), memory encoding (Free and Cued Selective Reminding Test [FCSRT] immediate free and total recall²⁶), memory recall (FCSRT delayed free and total recall; Benson Complex Figure recall), social cognition (Facial Emotion Recognition Test²⁴), and visuoconstruction (Benson Complex Figure copy). Previous studies have shown that verbal fluency can involve both language and executive function processes and therefore we included it as a separate domain.^{35,36} Mini-

Table 1 Number of Participants at Each Yearly Follow-up

	Year				
	1	2	3	4	5
<i>C9orf72</i>	207	109	105	34	0
<i>GRN</i>	206	112	72	31	3
<i>MAPT</i>	86	60	40	11	1
Controls	255	154	105	34	1

Abbreviations: *C9orf72* = chromosome 9 open reading frame 72; *GRN* = programulin; *MAPT* = microtubule-associated protein tau.

Mental State Examination (MMSE)³⁷ measured global cognitive functioning.

Statistical Analysis

Statistical analyses were performed using Stata version 14.2 and R version 4.0.4. We compared continuous demographic data between groups with 2-way analyses of variance and a χ^2 test for sex. The significance level was set at $p < 0.05$ (2-tailed) across all comparisons.

All neuropsychological data were standardized to z scores (i.e., raw score – mean score controls at baseline/SD controls at baseline). z scores for tests with reaction times (i.e., TMT and D-KEFS Color-Word Interference Test) were inversed so that lower z scores indicate worse performance. Cognitive domains were calculated by averaging the mean z scores of the neuropsychological tests in that domain. Only the FCSRT total recall was included in the memory domains, as the free recall scores are a part of the total recall scores. The memory, social cognition, and visuoconstruction domains are represented by only 1 test.

As this is a prospective cohort study, not all pathogenic variant carriers had completed all study visits, which resulted in missing data. We used linear mixed-effects models for each cognitive domain to examine whether differences existed between *C9orf72*, *GRN*, and *MAPT* pathogenic variant carriers and controls in cognitive decline since baseline. This type of model allows for the analysis of longitudinal data with unbalanced time points and missing data.³⁸ Age and years of education were included in all models as covariates. In each model, a different cognitive outcome was used as the dependent variable and we specified the following fixed effects: time since baseline in years, gene group, CDR category at baseline, age at baseline, years of education, the 2-way interactions between time and group, time and CDR category, and gene group and CDR category, and the 3-way interaction between time, group, and CDR category. We included random intercepts for participants who were nested within families, but not random slopes as this did not improve model fit. A natural cubic splines model did not improve model fit. We performed post hoc pairwise comparisons in intercepts and slopes between genetic groups within CDR categories. Results are shown as a difference between pathogenic variant group and the control group or a different pathogenic variant group if stated.

Table 2 Demographics and Neuropsychological Data per Genetic Group and CDR plus NACC FTLD Global Score Category at Baseline

	<i>C9orf72</i>			<i>GRN</i>			<i>MAPT</i>			Controls
Demographic data										
CDR plus NACC FTLD category	0	0.5	≥1	0	0.5	≥1	0	0.5	≥1	0
N	109	32	66	129	31	46	48	14	24	255
Sex ratio, F:M	64:45	20:12	24:42	84:45	16:15	23:23	29:19	10:4	8:16	145:110
Age, y	44.0 (11.6)	47.7 (10.7)	62.2 (8.9)	45.9 (12.2)	51.8 (13.2)	63.6 (7.9)	39.3 (10.5)	45.7 (12.6)	57.3 (10.2)	45.3 (12.8)
Education, y	14.3 (3.0)	14.3 (2.6)	13.2 (3.7)	14.7 (3.4)	14.0 (4.0)	11.9 (3.3)	14.4 (3.4)	13.5 (2.4)	13.7 (3.9)	14.4 (3.3)
MMSE	28.9 (3.1)	28.8 (2.0)	23.7 (6.1)	29.0 (3.9)	27.8 (5.8)	20.2 (7.6)	29.5 (0.8)	28.2 (2.3)	23.7 (6.7)	29.2 (2.2)
CDR plus NACC FTLD sum of boxes	0.0 (0.0)	1.1 (0.8)	10.9 (5.5)	0.0 (0.0)	1.0 (0.8)	9.2 (5.8)	0.0 (0.0)	1.1 (0.8)	9.3 (5.5)	0.0 (0.1)
Neuropsychological data										
Language	-0.2 (1.0)	-0.3 (1.3)	-3.1 (2.7)	0.1 (0.6)	-0.5 (1.4)	-3.1 (2.4)	-0.1 (0.8)	-0.7 (1.2)	-4.1 (3.3)	—
Attention	-0.3 (0.8)	-0.3 (1.0)	-2.7 (1.7)	-0.0 (0.6)	-0.4 (1.2)	-2.9 (2.0)	0.2 (0.7)	-0.1 (0.9)	-1.5 (1.4)	—
Verbal fluency	-0.2 (0.8)	-0.3 (0.9)	-2.0 (0.9)	0.1 (0.8)	-0.1 (0.9)	-1.8 (1.0)	0.1 (0.8)	0.1 (1.0)	-1.4 (1.2)	—
Executive function	-0.4 (1.1)	-0.4 (1.2)	-3.3 (1.9)	-0.0 (0.7)	-0.6 (1.9)	-3.5 (2.1)	0.1 (0.8)	-0.2 (0.9)	-1.9 (1.8)	—
Memory: immediate recall	-0.5 (1.8)	-0.8 (2.3)	-3.3 (4.0)	0.1 (0.7)	-0.7 (2.3)	-5.7 (5.5)	0.0 (1.1)	-0.9 (2.6)	-5.2 (4.0)	—
Memory: delayed recall	-0.3 (0.9)	-0.1 (1.2)	-2.6 (2.6)	-0.0 (0.7)	-0.5 (1.6)	-3.3 (3.4)	-0.1 (1.1)	-0.8 (2.3)	-4.3 (3.0)	—
Social cognition	-0.1 (1.0)	-0.7 (1.3)	-3.1 (2.2)	0.1 (1.1)	-0.7 (1.4)	-2.8 (1.9)	0.1 (0.8)	-0.5 (1.2)	-2.2 (2.1)	—
Visuoconstruction	-0.1 (1.2)	-0.2 (1.6)	-2.3 (2.9)	0.2 (0.8)	0.2 (1.0)	-1.9 (3.2)	-0.2 (0.9)	-0.2 (0.9)	-1.3 (2.7)	—

Abbreviations: *C9orf72* = chromosome 9 open reading frame 72; CDR plus NACC FTLD = Clinical Dementia Rating scale plus National Alzheimer's Coordinating Center Frontotemporal Lobar Degeneration; *GRN* = progranulin; *MAPT* = microtubule-associated protein tau; MMSE = Mini-Mental State Examination. Values are represented as mean z score compared with controls (SD) unless otherwise specified.

β indicates an estimated difference in z score at baseline; β_1 indicates a difference in change over time (slope). An example of the model and its outputs is shown in eAppendix 1 (links.lww.com/WNL/B987).

Data Availability

Anonymized data not published within this article will be made available upon reasonable request from any qualified investigator.

Results

Demographics

There were more female participants in CDR categories 0 and 0.5 and more male participants in CDR category ≥1 for *C9orf72* ($\chi^2[2] = 9.8, p = 0.007$) and *MAPT* ($\chi^2[2] = 6.6, p = 0.036$) pathogenic variant carriers (Table 2). We found differences in age at baseline between gene groups ($F_{3,744} = 5.6, p < 0.001$) and between CDR categories ($F_{2,744} = 91.4, p < 0.001$) (Table 2). Post hoc pairwise comparisons revealed that *C9orf72* and *GRN* pathogenic variant carriers were older than *MAPT* pathogenic variant carriers (all $p \leq 0.02$) and controls (all $p < 0.001$) and each CDR category represented older pathogenic variant carriers than the categories with a lower

CDR category (all $p \leq 0.008$). We found differences between CDR categories in years of education at baseline ($F_{2,744} = 8.8, p < 0.001$), with CDR category ≥1 having had fewer years of education than the other categories (all $p < 0.03$) (Table 2). There was an interaction effect between gene group and CDR category on MMSE at baseline ($F_{4,742} = 4.3, p = 0.002$). Post hoc simple main effects illustrated a difference in MMSE at baseline between CDR categories in all 3 gene groups and a difference in MMSE at baseline between gene groups in CDR category ≥1. Descriptive and neuropsychological data at baseline are reported in Table 2 and eTable 2 (links.lww.com/WNL/B987).

Baseline and longitudinal results for each cognitive domain are discussed in the following sections (Tables 2 and 3, Figures 1 and 2, and summarized in Figure 3).

Attention

We found strong evidence for differences in the attention domain between CDR categories ($\chi^2[2] = 23.2, p < 0.001$) and between gene groups ($\chi^2[3] = 26.0, p < 0.001$) at baseline. *C9orf72* ($\beta = -2.2, SE 0.14, p < 0.001$), *GRN* ($\beta = -2.2, SE 0.16, p < 0.001$), and *MAPT* ($\beta = -1.1, SE 0.21, p < 0.001$)

Table 3 Slopes and CIs Stratified by Genetic Group and CDR Plus NACC FTLD Global Score for Each Cognitive Domain

CDR plus NACC FTLD	0		0.5		≥1	
	β	95% CI	β	95% CI	β	95% CI
<i>C9orf72</i>						
Language	0.02	-0.09 to 0.14	-0.03	-0.37 to 0.32	-0.50	-0.70 to -0.30
Attention	-0.03	-0.10 to 0.05	0.07	-0.15 to 0.29	-0.24	-0.36 to -0.11
Verbal fluency	-0.01	-0.07 to 0.04	0.03	-0.14 to 0.19	-0.13	-0.22 to -0.04
Executive function	-0.07	-0.16 to 0.02	-0.04	-0.31 to 0.23	-0.03	-0.20 to 0.14
Memory: immediate recall	0.26	0.11 to 0.40	0.45	0.06 to 0.84	-0.01	-0.25 to 0.24
Memory: delayed recall	0.14	0.05 to 0.23	0.14	-0.09 to 0.37	0.00	-0.16 to 0.16
Social cognition	0.06	-0.06 to 0.17	0.14	-0.15 to 0.43	0.20	0.00 to 0.40
Visuoconstruction	-0.07	-0.25 to 0.11	-0.13	-0.58 to 0.32	0.02	-0.25 to 0.28
<i>GRN</i>						
Language	0.05	-0.04 to 0.14	-0.08	-0.39 to 0.23	-1.24	-1.51 to -0.97
Attention	0.02	-0.04 to 0.07	-0.03	-0.22 to 0.17	-0.34	-0.52 to -0.16
Verbal fluency	0.00	0.04 to 0.05	-0.18	-0.33 to -0.03	-0.15	-0.28 to -0.02
Executive function	-0.01	-0.08 to 0.06	0.09	-0.16 to 0.33	-0.09	-0.32 to 0.15
Memory: immediate recall	0.06	-0.05 to 0.17	0.17	-0.17 to 0.52	-0.24	-0.64 to 0.17
Memory: delayed recall	0.05	-0.02 to 0.12	-0.03	-0.24 to 0.18	-0.06	-0.32 to 0.20
Social cognition	0.09	0.00 to 0.18	0.11	-0.16 to 0.39	-0.47	-0.70 to -0.23
Visuoconstruction	-0.09	-0.23 to 0.05	-0.45	-0.88 to -0.02	-0.13	-0.48 to 0.23
<i>MAPT</i>						
Language	0.08	-0.06 to 0.22	-0.43	-0.76 to -0.10	-0.39	-0.67 to -0.10
Attention	-0.01	-0.09 to 0.08	-0.08	-0.28 to 0.13	-0.21	-0.39 to -0.04
Verbal fluency	0.00	-0.07 to 0.07	0.05	-0.10 to 0.21	-0.09	-0.23 to 0.04
Executive function	0.07	-0.04 to 0.17	0.14	-0.12 to 0.41	-0.55	-0.77 to -0.33
Memory: immediate recall	0.02	-0.15 to 0.18	0.19	-0.20 to 0.57	-0.06	-0.46 to 0.34
Memory: delayed recall	0.03	-0.07 to 0.13	0.07	-0.16 to 0.31	-0.16	-0.41 to 0.09
Social cognition	0.08	-0.05 to 0.21	0.20	-0.12 to 0.52	-0.13	-0.37 to 0.12
Visuoconstruction	0.04	-0.17 to 0.25	0.11	-0.36 to 0.58	0.20	-0.17 to 0.58
Controls						
	β	95% CI				
Language	0.06	-0.02 to 0.13				
Attention	0.05	0.00 to 0.10				
Verbal fluency	0.02	-0.02 to 0.05				
Executive function	0.02	-0.03 to 0.08				
Memory: immediate recall	0.00	-0.11 to 0.22				
Memory: delayed recall	0.05	-0.01 to 0.10				
Social cognition	0.04	-0.03 to 0.12				
Visuoconstruction	0.13	0.04 to 0.12				

Abbreviations: *C9orf72* = chromosome 9 open reading frame 72; CDR plus NACC FTLD = Clinical Dementia Rating scale plus National Alzheimer's Coordinating Center Frontotemporal Lobar Degeneration; *GRN* = progranulin; *MAPT* = microtubule-associated protein tau.

pathogenic variant carriers with CDR category ≥ 1 all performed worse than controls, with both *C9orf72* ($\beta = -1.1$, SE 0.23, $p < 0.001$) and *GRN* ($\beta = -1.2$, SE 0.25, $p < 0.001$) pathogenic variant carriers performing worse than *MAPT* pathogenic variant carriers. *C9orf72* pathogenic variant carriers with CDR category 0 also performed worse at baseline than *GRN* ($\beta = -0.3$, SE 0.13, $p = 0.010$) and *MAPT* ($\beta = -0.4$, SE 0.16, $p = 0.030$) pathogenic variant carriers and controls ($\beta = -0.4$, SE 0.11, $p < 0.001$; Figure 1A). In addition, we found an interaction effect between time and gene group ($\chi^2[3] = 37.1$, $p < 0.001$). All gene groups with CDR category ≥ 1 declined over time compared with controls (*C9orf72*: $\beta_1 = -0.3$, SE 0.07, $p < 0.001$; *GRN*: $\beta_1 = -0.4$, SE 0.10, $p < 0.001$; *MAPT*: $\beta_1 = -0.3$, SE 0.09, $p = 0.004$). There was some weak evidence that *C9orf72* pathogenic variant carriers with CDR category 0 declined over time compared with controls ($\beta_1 = -0.4$, SE 0.11, $p = 0.086$; Figure 1A).

Executive Function

We found strong evidence for differences on the executive function domain between CDR categories ($\chi^2[2] = 27.2$, $p < 0.001$) and between gene groups ($\chi^2[3] = 23.3$, $p < 0.001$) at baseline. A similar profile was seen in all gene groups with CDR category ≥ 1 performing worse at baseline than controls (*C9orf72*: $\beta = -3.1$, SE 0.25, $p < 0.001$; *GRN*: $\beta = -3.2$, SE 0.23, $p < 0.001$; *MAPT*: $\beta = -1.7$, SE 0.29, $p < 0.001$), and *C9orf72* ($\beta = -1.0$, SE 0.32, $p = 0.003$) and *GRN* ($\beta = -1.1$, SE 0.35, $p = 0.002$) pathogenic variant carriers performing worse than *MAPT* pathogenic variant carriers (Figure 1B). *C9orf72* pathogenic variant carriers with CDR category 0 also performed worse than *GRN* ($\beta = -0.4$, SE 0.17, $p = 0.016$) and *MAPT* ($\beta = -0.6$, SE 0.23, $p = 0.012$) pathogenic variant carriers, and controls ($\beta = -0.5$, SE 0.15, $p < 0.001$) and *GRN* pathogenic variant carriers with CDR category 0.5 performed worse than controls ($\beta = -0.7$, SE 0.25, $p = 0.006$). We found interaction effects between time and gene group ($\chi^2[3] = 24.7$, $p < 0.001$), time and CDR category ($\chi^2[2] = 25.8$, $p < 0.001$), and time, gene group, and CDR category ($\chi^2[4] = 18.6$, $p = 0.001$). *MAPT* pathogenic variant carriers with CDR category ≥ 1 demonstrated steeper decline over time than *C9orf72* ($\beta_1 = -0.5$, SE 0.14, $p = 0.002$) and *GRN* pathogenic variant carriers ($\beta_1 = -0.5$, SE 0.17, $p = 0.005$) and controls ($\beta_1 = -0.6$, SE 0.12, $p < 0.001$) (Figure 1B).

Language

Language differed between CDR categories ($\chi^2[2] = 96.7$, $p < 0.001$) and between gene groups ($\chi^2[3] = 21.5$, $p < 0.001$) at baseline. Again, all gene groups with CDR category ≥ 1 performed worse than controls (*C9orf72*: $\beta = -3.2$, SE 0.28, $p < 0.001$; *GRN*: $\beta = -2.9$, SE 0.31, $p < 0.001$; *MAPT*: $\beta = -5.0$, SE 0.41, $p < 0.001$) at baseline, but in this case *MAPT* pathogenic variant carriers performed worse than *C9orf72* ($\beta = -1.7$, SE 0.34, $p = 0.002$) and *GRN* ($\beta = -1.3$, SE 0.33, $p = 0.009$) pathogenic variant carriers (Figure 1C). We also found interaction effects between time and gene group ($\chi^2[3] = 104.8$, $p < 0.001$), time and CDR category ($\chi^2[2] = 14.0$, $p = 0.001$), and time, gene group, and CDR category ($\chi^2[4] = 25.5$, $p < 0.001$).

MAPT pathogenic variant carriers with CDR category 0.5 ($\beta_1 = -0.5$, SE 0.17, $p = 0.004$) or ≥ 1 ($\beta_1 = -0.5$, SE 0.15, $p = 0.003$) as well as *C9orf72* ($\beta_1 = -0.6$, SE 0.11, $p < 0.001$) and *GRN* ($\beta_1 = -1.3$, SE 0.14, $p < 0.001$) pathogenic variant carriers with CDR category ≥ 1 declined over time compared with controls. In CDR category ≥ 1 , *GRN* pathogenic variant carriers demonstrated steeper decline over time than *C9orf72* ($\beta_1 = -0.7$, SE 0.17, $p < 0.001$) and *MAPT* ($\beta_1 = -0.9$, SE 0.20, $p < 0.001$) pathogenic variant carriers (Figure 1C).

Verbal Fluency

For verbal fluency, we found strong evidence for differences between CDR categories ($\chi^2[2] = 40.0$, $p < 0.001$) at baseline. All gene groups with CDR category ≥ 1 performed worse than controls (*C9orf72*: $\beta = -1.8$, SE 0.12, $p < 0.001$; *GRN*: $\beta = -1.6$, SE 0.14, $p < 0.001$; *MAPT*: $\beta = -1.3$, SE 0.18, $p < 0.001$), with *C9orf72* performing worse than *MAPT* pathogenic variant carriers ($\beta = -0.5$, SE 0.19, $p = 0.018$; Figure 1D). In CDR category 0, *C9orf72* pathogenic variant carriers performed worse than controls ($\beta = -0.3$, SE 0.09, $p = 0.003$) and *GRN* pathogenic variant carriers ($\beta = -0.3$, SE 0.11, $p = 0.002$). We found an interaction effect between time and gene group ($\chi^2[3] = 14.5$, $p < 0.002$). *C9orf72* pathogenic variant carriers with CDR category ≥ 1 ($\beta_1 = -0.2$, SE 0.05, $p = 0.004$) and *GRN* pathogenic variant carriers with CDR categories 0.5 ($\beta_1 = -0.2$, SE 0.08, $p = 0.013$) and ≥ 1 ($\beta_1 = -0.2$, SE 0.07, $p = 0.015$) declined over time compared with controls (Figure 1D).

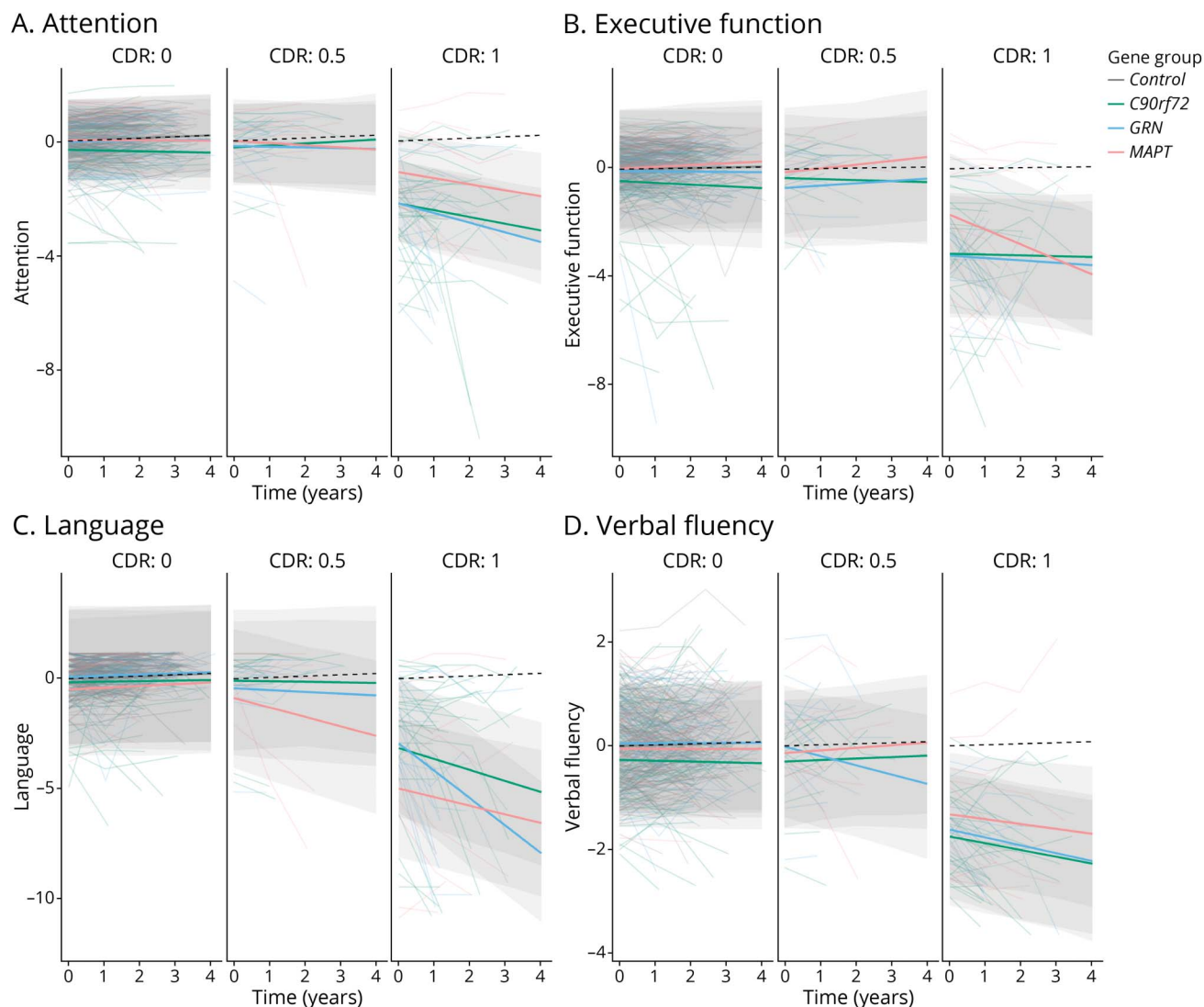
Memory: Immediate Recall

For immediate recall, we found strong evidence for differences between CDR categories ($\chi^2[2] = 51.4$, $p < 0.001$) and between gene groups ($\chi^2[3] = 40.2$, $p < 0.001$) at baseline. All gene groups with CDR category ≥ 1 performed worse than controls (*C9orf72*: $\beta = -2.7$, SE 0.32, $p < 0.001$; *GRN*: $\beta = -5.5$, SE 0.40, $p < 0.001$; *MAPT*: $\beta = -4.3$, SE 0.51, $p < 0.001$), with *MAPT* performing worse than *C9orf72* pathogenic variant carriers ($\beta = -1.7$, SE 0.56, $p = 0.003$) and *GRN* pathogenic variant carriers performing worse than *C9orf72* ($\beta = -3.0$, SE 0.47, $p < 0.001$) and *MAPT* pathogenic variant carriers ($\beta = -1.2$, SE 0.62, $p = 0.032$; Figure 2A).

Memory: Delayed Recall

For delayed recall, we also found evidence for differences between CDR categories ($\chi^2[2] = 36.9$, $p < 0.001$) and between gene groups ($\chi^2[3] = 10.4$, $p = 0.015$) at baseline. Again, all gene groups with CDR category ≥ 1 performed worse than controls (*C9orf72*: $\beta = -2.0$, SE 0.21, $p < 0.001$; *GRN*: $\beta = -2.8$, SE 0.27, $p < 0.001$; *MAPT*: $\beta = -2.7$, SE 0.35, $p < 0.001$), with *GRN* ($\beta = -0.9$, SE 0.32, $p = 0.007$) and *MAPT* ($\beta = -0.8$, SE 0.38, $p = 0.033$) performing worse than *C9orf72* pathogenic variant carriers. *MAPT* pathogenic variant carriers with CDR category 0.5 ($\beta = -0.8$, SE 0.36, $p = 0.021$) performed worse than controls and *C9orf72* pathogenic variant carriers ($\beta = -0.9$, SE 0.42, $p = 0.023$). There was some weak evidence indicating that *MAPT* pathogenic variant carriers with CDR category 0 performed worse than controls ($\beta = -0.4$, SE 0.21, $p = 0.081$; Figure 2B). None of the groups declined significantly over time.

Figure 1 Linear Mixed Effects Models Displaying Longitudinal Trajectories in Composite Domain Z Score Stratified by the CDR Plus NACC FTLD for *C9orf72*, *GRN*, and *MAPT* Pathogenic Variant Carriers and Healthy Controls



Models are displayed per cognitive domain: (A) attention, (B) executive function, (C) language, and (D) verbal fluency. *C9orf72* = chromosome 9 open reading frame 72; CDR = Clinical Dementia Rating scale plus National Alzheimer's Coordinating Center Frontotemporal Lobar Degeneration; *GRN* = progranulin; *MAPT* = microtubule-associated protein tau.

Social Cognition

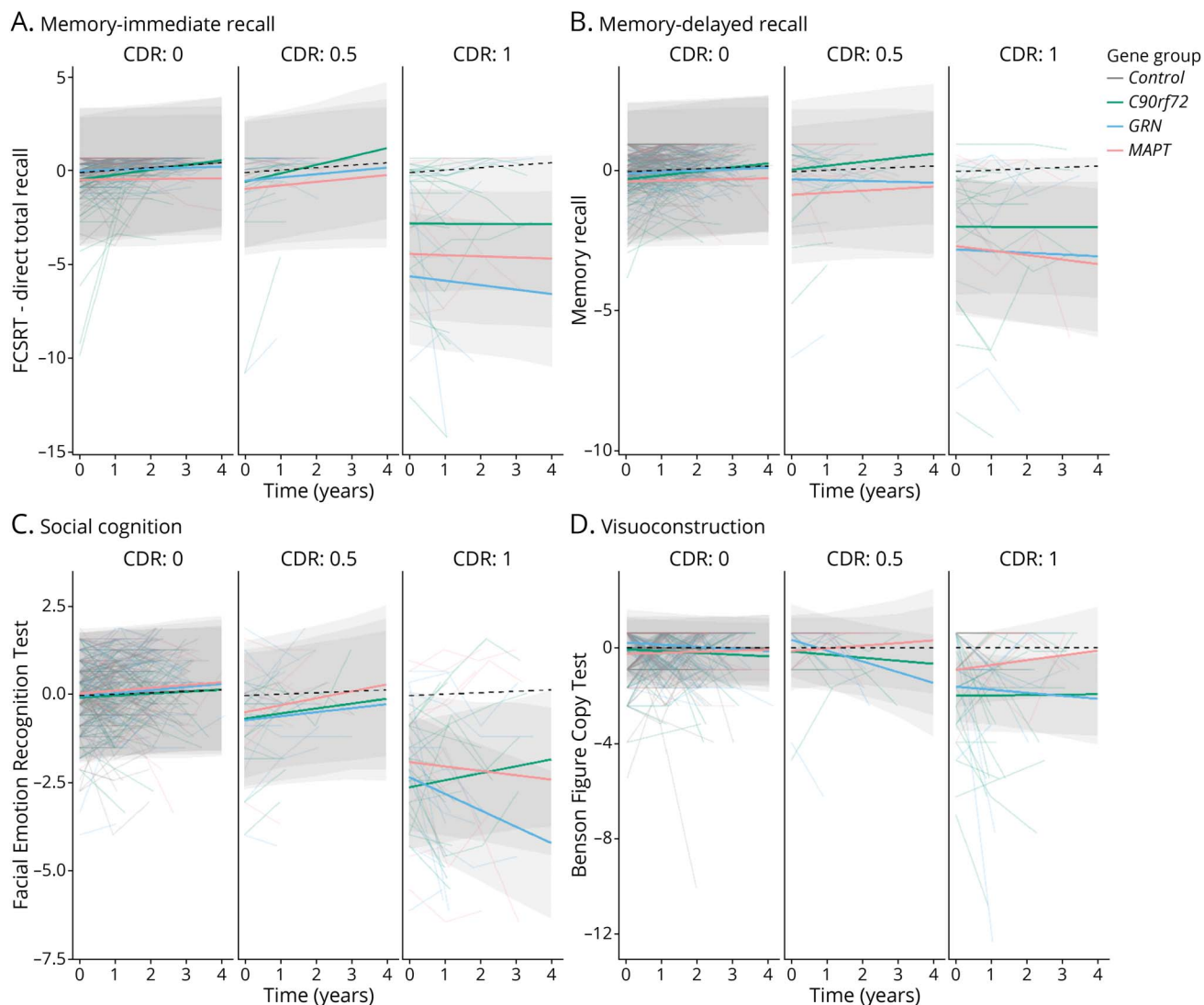
We found strong evidence for differences between CDR categories ($\chi^2[2] = 35.7, p < 0.001$) at baseline on social cognition. All gene groups with CDR category ≥ 1 performed worse than controls (*C9orf72*: $\beta = -2.6, SE 0.19, p < 0.001$; *GRN*: $\beta = -2.3, SE 0.23, p < 0.001$; *MAPT*: $\beta = -1.9, SE 0.28, p < 0.001$), with *GRN* performing worse than *MAPT* pathogenic variant carriers ($\beta = -0.7, SE 0.33, p = 0.033$; Figure 2C). *C9orf72* ($\beta = -0.7, SE 0.24, p = 0.001$) and *GRN* ($\beta = -0.7, SE 0.25, p = 0.001$) pathogenic variant carriers with CDR category 0.5 also performed worse at baseline than controls. We found interaction effects between time and gene group ($\chi^2[3] = 21.3, p < 0.001$) and time, CDR category, and gene group ($\chi^2[4] = 16.3, p < 0.003$). *GRN* pathogenic variant carriers with CDR category ≥ 1 showed steeper decline over time compared with controls ($\beta_1 = -0.5, SE$

$0.13, p < 0.001$), *C9orf72* ($\beta_1 = -0.7, SE 0.16, p < 0.001$), and *MAPT* ($\beta_1 = -0.3, SE 0.17, p = 0.049$) pathogenic variant carriers and *MAPT* pathogenic variant carriers with CDR category ≥ 1 showed steeper decline over time compared to *C9orf72* pathogenic variant carriers ($\beta_1 = -0.3, SE 0.16, p = 0.047$; Figure 2C).

Visuoconstruction

We found differences between gene groups on visuoconstruction ($\chi^2[3] = 11.0, p = 0.012$) at baseline. All gene groups with CDR category ≥ 1 performed worse than controls (*C9orf72*: $\beta = -2.0, SE 0.22, p < 0.001$; *GRN*: $\beta = -1.6, SE 0.26, p < 0.001$; *MAPT*: $\beta = -0.9, SE 0.32, p = 0.004$), with *C9orf72* ($\beta = -1.2, SE 0.33, p = 0.002$) and *GRN* ($\beta = -1.0, SE 0.36, p = 0.008$) performing worse than *MAPT* pathogenic variant carriers. *GRN* pathogenic variant carriers with CDR

Figure 2 Linear Mixed Effects Models Displaying Longitudinal Trajectories in Composite Domain Z Score Stratified by the CDR Plus NACC FTLD for *C9orf72*, *GRN*, and *MAPT* Pathogenic Variant Carriers and Healthy Controls



Models are displayed per cognitive domain: (A) memory–immediate recall, (B) memory–delayed recall, (C) social cognition, and (D) visuoconstruction. *C9orf72* = chromosome 9 open reading frame 72; CDR = Clinical Dementia Rating scale plus National Alzheimer’s Coordinating Center Frontotemporal Lobar Degeneration; *GRN* = progranulin; *MAPT* = microtubule-associated protein tau.

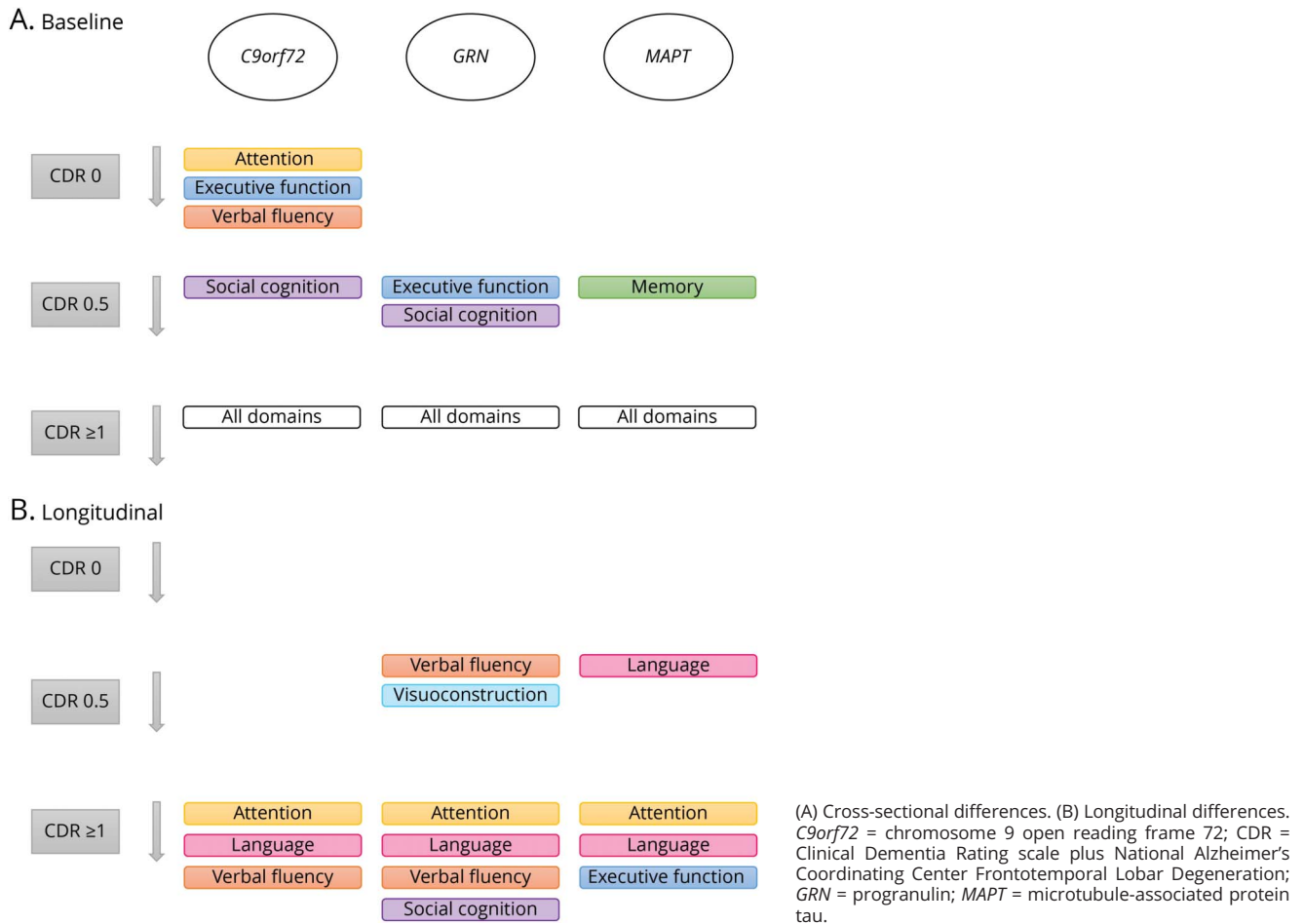
category 0.5 ($\beta_1 = -0.5$, SE 0.23, $p = 0.050$) showed steeper decline over time than controls (Figure 2D).

Discussion

This study demonstrated gene-specific baseline differences and decline over a 5-year time period in a large cohort of genetic FTD pathogenic variant carriers that was moderated by the CDR plus NACC FTLD global score. *C9orf72* pathogenic variant carriers performed lower on attention, executive function, and verbal fluency from CDR plus NACC FTLD 0 onwards, with relatively minimal decline over time compared with other genetic groups regardless of the CDR plus NACC FTLD score (i.e., disease progression). The cognitive profile in *MAPT* pathogenic variant carriers was characterized by early impaired

memory (already at CDR plus NACC FTLD 0.5), with language decline starting at CDR plus NACC FTLD 0.5, and executive dysfunction developing rapidly at CDR plus NACC FTLD ≥ 1 . *GRN* pathogenic variant carriers showed no differences or decline compared with controls at CDR plus NACC FTLD 0, but verbal fluency and visuoconstruction started to decline at CDR plus NACC FTLD 0.5. *GRN* pathogenic variant carriers showed the most rapid decline compared with the other groups in language and social cognition from CDR plus NACC FTLD ≥ 1 onwards. The results from this study confirm cognitive decline in the asymptomatic and prodromal stages of genetic FTD and hold potential for upcoming therapeutic trials by identifying (1) the most sensitive cognitive measures to track disease progression and treatment effects and (2) the speed of change over time, thereby providing insight into the best time window to start disease-modifying treatment.

Figure 3 Summary of Cross-Sectional and Longitudinal Differences Between Each Genetic Group and Controls



Asymptomatic *C9orf72* pathogenic variant carriers performed worse at baseline than controls on attention/mental processing speed, executive function, and verbal fluency. In the prodromal stage, social cognition was also lower at baseline, whereas at the fully symptomatic stage, all cognitive domains were lower at baseline. There was no decline over time in the asymptomatic stage or prodromal stage, but attention/mental processing speed, language, and verbal fluency declined over time in the symptomatic stage, although less rapidly than in other gene groups. The other cognitive domains remained relatively stable, and there were signs of possible practice effects for memory and social cognition. This is largely in line with previous studies demonstrating widespread cognitive impairment in *C9orf72* pathogenic variant carriers with relatively minimal decline over time.^{5,39,40} It is further corroborated by the fact that the neurodegenerative process associated with the *C9orf72* pathogenic variant is widespread, with neurodegeneration in the frontal and temporal cortices but also in more posterior cortical, subcortical, and cerebellar regions.^{39,41} This group performed lowest compared with the other groups on a wide range of neuropsychological tests, specifically tests for attention/mental processing speed and executive function, at the asymptomatic stage. Although these

performances were not at an “impaired” level (i.e., z score ≤ -2), these deficits might represent the earliest signs of neurodegeneration with very slow decline over time. Alternatively, the lack of decline over time in all 3 disease stages raises the intriguing possibility that these deficits are not merely preclinical signs of FTD as a result of early neurodegeneration, but might be indicative of a neurodevelopmental disorder in *C9orf72*, which at a certain age is superimposed by additional neurodegeneration. This hypothesis has been suggested by several previous studies that found gray and white matter deficits and connectivity disruption as well as psychiatric conditions and cognitive deficits many years before the estimated age at symptom onset without evidence of disease progression over time.^{42,43} Future studies should focus on ascertaining early-life radiologic and clinical assessments to test this hypothesis.

In *MAPT* pathogenic variant carriers, there was a trend towards lower memory performance than in controls at baseline in the asymptomatic stage, which became significant at the prodromal stage. All cognitive domains were lower than in controls at baseline in the symptomatic stage. There was no decline over time in the asymptomatic stage, but language

declined from the prodromal stage onwards. In addition, attention/mental processing speed, executive function, and social cognition declined progressively during the symptomatic stage. These results confirm that the first changes for this group occur in cognitive functions that are strongly associated with the temporal lobe, an area that already shows early degeneration in presymptomatic *MAPT* pathogenic variant carriers.⁶ Several previous studies have demonstrated that episodic memory impairment is a distinct feature in *MAPT*-related FTD, even in presymptomatic pathogenic variant carriers.^{19,20,26} Strikingly, we demonstrated lower memory performance in prodromal pathogenic variant carriers but with practice effects over time that disappeared at the fully symptomatic stage only. A likely explanation for these practice effects is that the same items for memory tests were used at all time points, stressing the need for the use of tests that have multiple versions with different stimuli in longitudinal cohort studies. The lower performance and decline seen in the language domain was largely driven by the Boston Naming Test, a test that strongly depends on the semantic memory system.⁴⁴ This is unsurprising given that semantic memory is strongly associated with the anteromedial temporal lobe, an area known to deteriorate early and progressively in *MAPT*-associated FTD.²⁶ Deficits in semantic memory have been described as a key symptom in *MAPT* pathogenic variant carriers in a more progressed disease stage,⁵ but our results illustrate that the first changes occur at a much earlier stage, suggesting that semantic tests might be a good candidate to serve as a sensitive end point in upcoming therapeutic trials of *MAPT*-associated FTD. Only at a later progressed stage, when atrophy spreads from the temporal to frontal areas of the brain, does impairment in cognitive functions that are typically associated with bvFTD develop, such as executive function and social cognition.^{22,45}

There were no cross-sectional differences between asymptomatic *GRN* pathogenic variant carriers and controls at baseline and there was no decline over time in this stage. In the prodromal stage, pathogenic variant carriers performed worse than controls on executive function and social cognition, and they declined over time on verbal fluency and visuoconstruction. All cognitive domains were lower than in controls at baseline in the symptomatic stage, and they showed progressive decline over time on attention/mental processing speed, verbal fluency, language, and social cognition. This is in line with previous studies showing minimal changes in gray and white matter but also cognition in presymptomatic *GRN* pathogenic variant carriers, often with fast progressive decline after symptom onset.^{5,20} Although in our study no change over time was detected in the asymptomatic stage, *GRN* pathogenic variant carriers performed worse on executive function and social cognitive tasks at the prodromal stage, suggesting some decline between these stages. Possible explanations could be that the asymptomatic pathogenic variant carriers were too far from symptom onset or that the time window between these stages where these changes occur is relatively short. Interestingly, verbal fluency declined

progressively in the prodromal period, indicating an early deficit in specifically verbal fluency. This could be interpreted as an early sign of pathogenic variant carriers developing nonfluent variant PPA, a clinical phenotype that is often seen in *GRN* pathogenic variant carriers.⁴¹ However, verbal fluency measures are also known to strongly depend on executive function,³⁶ a cognitive domain known to deteriorate in bvFTD.⁴⁵ Surprisingly, visuoconstruction also declined in the prodromal stage, whereas this is considered to be relatively spared in FTD.² However, most visuoconstructive tasks also strongly depend on executive functions such as planning, organizing, and keeping overview.⁴⁶ It seems, therefore, more likely that these tasks were influenced by impaired executive function rather than a pure impairment in language and visuoconstruction per se.

This is the first study to longitudinally investigate a large cohort of all 3 major causes of genetic FTD over a 5-year period. A major strength of this study is the use of the CDR plus NACC FTLD to stratify pathogenic variant carriers from asymptomatic to prodromal and fully symptomatic (i.e., 0, 0.5, ≥ 1). Most previous studies have stratified pathogenic variant carriers as either presymptomatic or symptomatic according to whether they fulfilled diagnostic criteria for FTD syndromes, but this does not fully grasp the clinical trajectory of FTD. The cognitive profile between the presymptomatic and symptomatic phase has not been well-characterized. Some other studies have used estimated years to symptom onset based on mean family age at onset, but a recent article demonstrated that the correlations between age at symptom onset and mean family age at symptom onset were weak for *C9orf72* and *GRN* pathogenic variant carriers, indicating that this might not be a reliable proxy.²⁸ By stratifying according to CDR plus NACC FTLD, we have provided insight into cognitive decline during different disease stages.

There are limitations to this study. First, the sample size at the CDR plus NACC FTLD 0.5 stage was smaller than the other stages, which probably influenced the statistical power in this specific group. Second, due to ongoing recruitment within GENFI, participants varied in the number of completed visits, resulting in missing data at later time points. Therefore, we analyzed the data with linear mixed-effects models, as these models allow for unbalanced time points and missing data.³⁸ We could not use a nonlinear mixed effects model (e.g., natural cubic splines) due to the limited number of follow-up visits. However, similar to what has been performed in studies of familial AD,⁴⁷ nonlinear models might be more suitable for the analysis of clinical progression in FTD. Future studies with longer follow-up should therefore investigate the use of nonlinear models in analyzing clinical disease progression in FTD. Third, we did not take progression over time on the CDR plus NACC FTLD into account, but stratified groups according to their global score at baseline. Future research should investigate the cognitive trajectories of progressors compared with nonprogressors on the CDR plus NACC FTLD more in depth. Individual trajectories demonstrated

high variability between individuals in each group. A possible explanation for this interindividual variability could be that some individuals with a CDR plus NACC FTLD global score of 0 might be closer to symptom onset than others. Similarly, individuals with a CDR plus NACC FTLD score of 0.5 or ≥ 1 at baseline might vary in time since progression to that CDR category (i.e., individuals who had a global score of 0.5 for several years at inclusion will likely progress faster than individuals who progressed to a score of 0.5 more recently). Validation in other cohorts such as ALLFTD or DINAD is warranted. Fourth, practice effects were strikingly visible for the FCSRT and Facial Emotion Recognition Test, stressing the need for different test versions in the former, but more sensitive tasks for emotion recognition (e.g., the use of morphed facial expressions²²) and social cognition in general. Lastly, in the interpretation of memory–immediate recall, social cognition, and visuoconstruction results, it should be taken into account that they were represented by only a single cognitive test, and those individual tests might not be a representation of the entire cognitive domain.

We provide evidence for gene-specific cognitive decline in the prodromal stage of genetic FTD. Specifically, tests for attention/mental processing speed, executive function, language, and memory showed clear differences between gene groups and controls at baseline, but the speed and nature of change over time differed depending on (1) the gene group and (2) the CDR plus NACC FTLD global score. These results confirm the value of neuropsychological assessment in tracking disease progression and could inform upcoming clinical trials in selecting sensitive end points for measuring treatment effects as well as in characterizing the best time window for starting treatment.

Acknowledgment

The authors thank the research participants and their families for their contribution to the study.

Study Funding

Several authors of this publication are members of the European Reference Network for Rare Neurological Diseases (project ID 739510). J.D. Rohrer is supported by the Miriam Marks Brain Research UK Senior Fellowship, MRC Clinician Scientist Fellowship (MR/M008525/1), and has received funding from the NIHR Rare Disease Translational Research Collaboration (BRC149/NS/MH) and both the MRC UK GENFI grant (MR/M023664/1) and the JPND GENFI-PROX grant (2019-02248). J.M. Poos, L. Jiskoot, E. van der Ende, J.M. Pappa, H. Seelaar, and J. van Swieten's contributions to this work were supported by the Bluefield Project, the Dioraphte Foundation (grant 09-02-00), the Association for Frontotemporal Dementias Research Grant 2009, The Netherlands Organization for Scientific Research (NWO) (grant HCMI 056-13-018), ZonMw Memorabel (Deltaplan Dementie) (project numbers 733 050 103 and 733 050 813), and JPND PreFrontALS consortium (project number 733051042). J.M. Poos was supported by a Fellowship award

from Alzheimer Nederland (WE.15-2019.02). J.M. Pappa received additional funding outside this submitted work from ZonMw and Alzheimer Nederland. F. Moreno's contributions to this work were supported by the Tau Consortium. R. Sanchez-Valle's contributions to this work were supported by the ISCIII grant (PI20/00448). B. Borroni received funding outside this submitted work in the past 36 months from the JPND consortium, the Italian Ministry of Health, and the Alzheimer's Drug Discovery Foundation (ADDF). M. Masellis' contribution to this work was funded by the Canadian Institutes of Health Research; in addition, he received funding outside the submitted work in the past 36 months from the Ontario Brain Institute, ADDF, Brain Canada, Weston Brain Institute, Roche, Washington University, Axovant, and Alector. M.C. Tartaglia has received funding from the NIH. C. Graff's contribution to this work was supported by (1) cofunding from the Swedish Research Council and JPND grant GENFI-PROX (2019-02248), (2) cofunding from the Swedish Research Council and JPND grant PrefrontALS (2015-02926), (3) the Swedish Research Council (2018-02754), (4) the Schörling Foundation and Swedish FTD Initiative, (5) the Swedish Alzheimer Foundation, (6) the Swedish Brain Foundation, (7) the Region Stockholm ALF project, (8) Karolinska Institutet Doctoral and StratNeuro grants, and (9) the Swedish Dementia Foundation. J. Rowe's contribution to this work was supported by the National Institute for Health Research and the Medical Research Council (BRC-1215-20014) and the Medical Research Council (SUAG/051 G101400); he received additional funding outside the submitted work in the past 36 months from the Wellcome Trust (103838), Parkinsons UK, Alzheimer Research UK, PSP Association, Evelyn Trust, Janssen, Lilly, and AstraZeneca. E. Finger's contribution to this work was supported by the Canadian Institutes for Health Research; in addition, she received funding in the past 36 months from the Physician's Services Incorporated Foundation. M. Synofzik's contribution to this work was supported by the JPND GENFI-PROX grant via DLR/DFG 01ED2008B. R. Vandenberghe received funding outside this submitted work in the past 36 months from a clinical trial agreement with AbbVie, Roche, Alector, UCB, Johnson & Johnson, the Flemish Research Foundation, and Bijzonder Onderzoeksfonds KU Leuven. A. Mendonça received funding outside the submitted work for FMUL: BEYOND BETA-AMYLOID: Deciphering Early Pathogenic Changes in Alzheimer's Disease, FCT (2018-2022), and RADAR-AD: Remote Assessment of Disease And Relapse: Alzheimer's Disease (2020-2022). S. Ducharme received funding from the Canadian Institutes of Health Research: Neurosciences, Mental Health and Addiction, the FRQS Junior 2 Clinician Scientist Award, the Ministère de l'Économie et de l'Innovation (Brouillette Operational Grant), and JPND. C. Butler's contributions to this work were supported by the Medical Research Council. In addition, he received funding in the past 36 months from the Alzheimer's Association. A. Gerhard's contributions to this work were supported by the Medical Research Council UK. J. Levin's contributions to this work were supported by the Deutsche Forschungsgemeinschaft (DFG, German Research Foundation)

under Germany's Excellence Strategy within the framework of the Munich Cluster for Systems Neurology (EXC 2145 SyNergy: ID 390857198). A. Danek received funding from Advocacy for Neuroacanthocytosis Patients. M. Otto received funding outside the submitted work in the past 36 months from BMBF, Boehringer Ingelheim, Alector, and Axon. I. Le Ber has received funding in the past 36 months from JPND.

Disclosure

J.D. Rohrer has received consulting fees from UCB, AC Immune, Astex Pharmaceuticals, Biogen, Takeda, and Eisai and is part of the Medical Advisory Board for Alector, Arkuda Therapeutics, Wave Life Sciences, and Prevail Therapeutics. R. Sanchez-Valle has received consulting fees from Wave Pharmaceuticals and Ionis-Biogen and from Roche Diagnostics and Janssen for educational activities and is member of the Data Safety Monitoring Board for Wave Pharmaceuticals and Ionis-Biogen. B. Borroni has received consulting fees from Alector and Wave Pharmaceuticals and has a pending patent on noninvasive brain stimulation. M. Masellis has received compensation for royalties from Henry Stewart Talks Ltd.; consulting fees from Arkuda Therapeutics, Ionis, Alector, Biogen, and Wave Life Sciences; personal fees for educational activities from Alector and Arkuda Therapeutics; and travel fees from Alector Pharmaceuticals. M.C. Tartaglia has received consulting fees from Roche. C. Graff has received consulting fees from Studentlitteratur 238 SEK 2020 and reimbursement for travel and lodging from University of Pennsylvania for attending KOL-meeting in October 2019. J. Rowe has received consulting fees from Asceneuron, Biogen, UCB, SV Health, and Astex; has provided expert testimony in private noncommercial medicolegal case reports; is part of an Advisory Board for several noncommercial academic institutions; and is Chief Scientific Advisor to Alzheimers Research UK, Guarantor of Brain, Trustee PSP Association, Trustee Darwin College, and Associate Director of the Dementias Platform UK. E. Finger has received consulting fees for the AAN annual meeting speaker and course director honorariums; is member of the Data Safety Monitoring Board for the Lithium trial, PIE. Huey (trial funded by peer reviewed grants from ADDF); and is a scientific advisory board member for Vigil Neuroscience, Denali Therapeutics, and on an advisory panel for Biogen. M. Synofzik has received consulting fees from Janssen Pharmaceuticals, Ionis Pharmaceuticals, and Orphazyme Pharmaceuticals and received support from the Movement Disorder Society for travel. R. Vandenberghe has received consulting fees from CyTox and is a member of the Data Safety and Monitoring Board of AC Immune. I. Santana has received consulting fees from Biogen and Roche Biogen, personal fees for presentations from Biogen, and is part of the Data Safety Monitoring Board for Novo Nordisk. S. Ducharme has received consulting fees from Innodem Neurosciences and personal fees from Sunovion Eisai. J. Levin has received consulting fees from Bayer Vital, Roche, and Biogen; is part of the Advisory Board for Axon Neurosciences; has received compensation for duty as part-time

CMO from Modag; and has received author fees from Thieme medical publishers and W. Kohlhammer GmbH medical publishers as well as nonfinancial support from AbbVie. A. Danek has received consulting fees from 3 hospitals in Switzerland and personal fees from the German court of law for medico-legal opinion. M. Otto has received consulting fees from Biogen, Axon, and Roche and is part of the Advisory Board for Axon. I. Le Ber has received consulting fees from Alector Prevail Therapeutics and personal fees from MDS and is also part of the Data Safety Monitoring Board for Alector Prevail Therapeutics. Go to [Neurology.org/N](https://www.neurology.org/N) for full disclosures.

Publication History

Received by *Neurology* October 15, 2021. Accepted in final form February 25, 2022.

Appendix 1 Authors

Name	Location	Contribution
Jackie M. Poos, MSc	Department of Neurology, Erasmus MC University Medical Center, Rotterdam, the Netherlands; Dementia Research Centre, Department of Neurodegenerative Disease, UCL Institute of Neurology, UK	Drafting/revision of the manuscript for content, including medical writing for content; major role in the acquisition of data; study concept or design; analysis or interpretation of data
Amy MacDougall, PhD	Department of Medical Statistics, London School of Hygiene and Tropical Medicine, UK	Analysis or interpretation of data
Esther van den Berg, PhD	Department of Neurology, Erasmus MC University Medical Center, Rotterdam, the Netherlands	Drafting/revision of the manuscript for content, including medical writing for content; study concept or design; analysis or interpretation of data
Lize C. Jiskoot, PhD	Department of Neurology, Erasmus MC University Medical Center, Rotterdam, the Netherlands; Dementia Research Centre, Department of Neurodegenerative Disease, UCL Institute of Neurology, UK	Drafting/revision of the manuscript for content, including medical writing for content; major role in the acquisition of data; analysis or interpretation of data
Janne M. Papma, PhD	Department of Neurology, Erasmus MC University Medical Center, Rotterdam, the Netherlands	Drafting/revision of the manuscript for content, including medical writing for content; study concept or design; analysis or interpretation of data
Emma L. van der Ende, PhD	Department of Neurology, Erasmus MC University Medical Center, Rotterdam, the Netherlands	Major role in the acquisition of data
Harro Seelaar, MD, PhD	Department of Neurology, Erasmus MC University Medical Center, Rotterdam, the Netherlands	Major role in the acquisition of data

Appendix 1 (continued)

Name	Location	Contribution
Lucy L. Russell, PhD	Dementia Research Centre, Department of Neurodegenerative Disease, UCL Institute of Neurology, UK	Major role in the acquisition of data; analysis or interpretation of data
Georgia Peakman, MSc	Dementia Research Centre, Department of Neurodegenerative Disease, UCL Institute of Neurology, UK	Major role in the acquisition of data
Rhian Convery, MSc	Dementia Research Centre, Department of Neurodegenerative Disease, UCL Institute of Neurology, UK	Major role in the acquisition of data
Yolande A.L. Pijnenburg, MD, PhD	Department of Neurology, Alzheimer Center, Amsterdam University Medical Center, Amsterdam Neuroscience, the Netherlands	Major role in the acquisition of data
Fermin Moreno, MD, PhD	Cognitive Disorders Unit, Department of Neurology, Donostia University Hospital, San Sebastian, Gipuzkoa, Spain	Major role in the acquisition of data
Raquel Sanchez-Valle, PhD	Alzheimer's Disease and Other Cognitive Disorders Unit, Neurology Service, Hospital Clinic, Institut d'Investigacions Biomèdiques August Pi I Sunyer, University of Barcelona, Spain	Major role in the acquisition of data
Barbara Borroni, MD	Centre for Neurodegenerative Disorders, Neurology Unit, Department of Clinical and Experimental Sciences, University of Brescia, Italy	Major role in the acquisition of data
Robert Laforce, Jr., MD, PhD	Clinique Interdisciplinaire de Mémoire, Département des Sciences Neurologiques, Université Laval, Québec, Canada	Major role in the acquisition of data
Marie-Claire Doré, PhD	Clinique Interdisciplinaire de Mémoire, Département des Sciences Neurologiques, Université Laval, Québec, Canada	Major role in the acquisition of data
Mario Masellis, MD, PhD	Sunnybrook Health Sciences Centre, Sunnybrook Research Institute, University of Toronto, Ontario, Canada	Major role in the acquisition of data
Maria Carmela Tartaglia, MD	Tanz Centre for Research in Neurodegenerative Diseases, University of Toronto, Ontario, Canada	Major role in the acquisition of data
Caroline Graff, MD, PhD	Department of Geriatric Medicine, Karolinska University Hospital-Huddinge, Stockholm, Sweden	Major role in the acquisition of data

Appendix 1 (continued)

Name	Location	Contribution
Daniela Galimberti, PhD	Centro Dino Ferrari, University of Milan; Fondazione IRCCS Ca' Granda, Ospedale Policlinico, Neurodegenerative Diseases Unit, Milan, Italy	Major role in the acquisition of data
James Rowe, FCRCP, PhD	Department of Clinical Neurosciences, University of Cambridge, UK	Major role in the acquisition of data
Elizabeth Finger, MD	Department of Clinical Neurological Sciences, University of Western Ontario, London, Canada	Major role in the acquisition of data
Matthis Synofzik, MD	Department of Neurodegenerative Diseases, Hertie-Institute for Clinical Brain Research and Center of Neurology, University of Tübingen; German Center for Neurodegenerative Diseases (DZNE), Tübingen, Germany	Major role in the acquisition of data
Rik Vandenberghe, MD, PhD	Laboratory for Cognitive Neurology, Department of Neurosciences, KU Leuven, Belgium	Major role in the acquisition of data
Alexandre Mendonça, MD, PhD	Faculty of Medicine, University of Lisbon, Portugal	Major role in the acquisition of data
Pietro Tiraboschi, MD	Fondazione Istituto di Ricovero e Cura a Carattere Scientifico Istituto Neurologico Carlo Besta, Milan, Italy	Major role in the acquisition of data
Isabel Santana, MD, PhD	Faculty of Medicine, University of Coimbra, Portugal	Major role in the acquisition of data
Simon Ducharme, MD	Department of Psychiatry, McGill University Health Centre, McGill University, Montreal, Québec, Canada	Major role in the acquisition of data
Christopher Butler, FRCP, PhD	Department of Clinical Neurology, University of Oxford, UK	Major role in the acquisition of data
Alexander Gerhard, MRCP, MD	Division of Neuroscience & Experimental Psychology, Faculty of Medicine, Biology and Health, University of Manchester, UK; Departments of Geriatric Medicine and Nuclear Medicine, Essen University Hospital, Germany	Major role in the acquisition of data
Johannes Levin, MD	Department of Neurology, Ludwig-Maximilians-University; German Center for Neurodegenerative Diseases (DZNE); Munich Cluster for Systems Neurology (SyNergy), Germany	Major role in the acquisition of data

Continued

Appendix 1 (continued)

Name	Location	Contribution
Adrian Danek, MD	Department of Neurology, Ludwig-Maximilians-University, Munich, Germany	Major role in the acquisition of data
Markus Otto, MD	Department of Neurology, University of Ulm, Germany	Major role in the acquisition of data
Isabelle Le Ber, MD, PhD	Sorbonne Université, Paris Brain Institute–Institut du Cerveau–ICM, Inserm U1127, CNRS UMR 7225, AP-HP–Hôpital Pitié-Salpêtrière; Centre de Référence des Démences Rares ou Précoces, IM2A, Département de Neurologie, AP-HP–Hôpital Pitié-Salpêtrière; Département de Neurologie, AP-HP–Hôpital Pitié-Salpêtrière, France	Major role in the acquisition of data
Florence Pasquier, MD, PhD	Univ Lille, Inserm 1172, CHU, CNR-MAJ, Labex Distalz, LICEND, Lille, France	Major role in the acquisition of data
John van Swieten, MD, PhD	Department of Neurology, Erasmus MC University Medical Center, Rotterdam, the Netherlands	Major role in the acquisition of data
Jonathan D. Rohrer, FRCP, PhD	Dementia Research Centre, Department of Neurodegenerative Disease, UCL Institute of Neurology, UK	Drafting/revision of the manuscript for content, including medical writing for content; major role in the acquisition of data; study concept or design; analysis or interpretation of data

Appendix 2 Coinvestigators

Coinvestigators are listed at links.lww.com/WNL/B988.

References

- Seelaar H, Rohrer JD, Pijnenburg YA, Fox NC, van Swieten JC. Clinical, genetic and pathological heterogeneity of frontotemporal dementia: a review. *J Neurol Neurosurg Psychiatry*. 2011;82(5):476-486.
- Rascovsky K, Hodges JR, Knopman D, et al. Sensitivity of revised diagnostic criteria for the behavioural variant of frontotemporal dementia. *Brain*. 2011;134(pt 9):2456-2477.
- Gorno-Tempini ML, Hillis AE, Weintraub S, et al. Classification of primary progressive aphasia and its variants. *Neurology*. 2011;76(11):1006-1014.
- Lashley T, Rohrer JD, Mead S, Revesz T. An update on clinical, genetic and pathological aspects of frontotemporal lobar degenerations. *Neuropathol Appl Neurobiol*. 2015;41(7):858-881.
- Poos JM, Jiskoot LC, Leijdesdorff SMJ, et al. Cognitive profiles discriminate between genetic variants of behavioural frontotemporal dementia. *J Neurol*. 2020;267(6):1603-1612.
- Rohrer JD, Nicholas JM, Cash DM, et al. Presymptomatic cognitive and neuroanatomical changes in genetic frontotemporal dementia in the Genetic Frontotemporal Dementia Initiative (GENFI) study: a cross-sectional analysis. *Lancet Neurol*. 2015;14(3):253-262.
- Jiskoot LC, Panman JL, Meeter LH, et al. Longitudinal multimodal MRI as prognostic and diagnostic biomarker in presymptomatic familial frontotemporal dementia. *Brain*. 2018;142(1):193-208.
- van der Ende EL, Meeter LH, Poos JM, et al. Serum neurofilament light chain in genetic frontotemporal dementia: a longitudinal, multicentre cohort study. *Lancet Neurol*. 2019;18(12):1103-1111.
- Panman JL, Jiskoot LC, Bouts M, et al. Gray and white matter changes in presymptomatic genetic frontotemporal dementia: a longitudinal MRI study. *Neurobiol Aging*. 2019;76:115-124.
- Benussi A, Gazzina S, Premi E, et al. Clinical and biomarker changes in presymptomatic genetic frontotemporal dementia. *Neurobiol Aging*. 2019;76:133-140.
- Mutsaerts HJMM, Mirza SS, Petr J, et al. Cerebral perfusion changes in presymptomatic genetic frontotemporal dementia: a GENFI study. *Brain*. 2019;142(4):1108-1120.
- Cash DM, Bocchetta M, Thomas DL, et al. Patterns of gray matter atrophy in genetic frontotemporal dementia: results from the GENFI study. *Neurobiol Aging*. 2018;62:191-196.
- Dopper EGP, Rombouts SAR, Jiskoot LC, et al. Structural and functional brain connectivity in presymptomatic familial frontotemporal dementia. *Neurology*. 2014;83(2):e19-e26.
- Tsai RM, Boxer AL. Therapy and clinical trials in frontotemporal dementia: past, present, and future. *J Neurochem*. 2016;138(suppl 1):211-221.
- Barandiaran M, Estanga A, Moreno F, et al. Neuropsychological features of asymptomatic c. 709-1G> A progranulin mutation carriers. *J Int Neuropsychol Soc*. 2012;18(6):1086-1090.
- Barandiaran M, Moreno F, de Arriba M, et al. Longitudinal neuropsychological study of presymptomatic c. 709-1G> A progranulin mutation carriers. *J Int Neuropsychol Soc*. 2019;25(1):39-47.
- Cheran G, Wu L, Lee S, et al. Cognitive indicators of preclinical behavioral variant frontotemporal dementia in MAPT carriers. *J Int Neuropsychol Soc*. 2019;25(2):184-194.
- Hallam BJ, Jacova C, Hsiung GYR, et al. Early neuropsychological characteristics of progranulin mutation carriers. *J Int Neuropsychol Soc*. 2014;20(7):694-703.
- Jiskoot LC, Dopper EG, Heijer T, et al. Presymptomatic cognitive decline in familial frontotemporal dementia: a longitudinal study. *Neurology*. 2016;87(4):384-391.
- Jiskoot LC, Panman JL, van Asseldonk L, et al. Longitudinal cognitive biomarkers predicting symptom onset in presymptomatic frontotemporal dementia. *J Neurol*. 2018;265(6):1381-1392.
- Papma JM, Jiskoot LC, Panman JL, et al. Cognition and gray and white matter characteristics of presymptomatic C9orf72 repeat expansion. *Neurology*. 2017;89(12):1256-1264.
- Jiskoot LC, Poos JM, Vollebergh ME, et al. Emotion recognition of morphed facial expressions in presymptomatic and symptomatic frontotemporal dementia, and Alzheimer's dementia. *J Neurol*. 2021;268(1):102-113.
- Moore K, Convery R, Bocchetta M, et al. A modified Camel and Cactus Test detects presymptomatic semantic impairment in genetic frontotemporal dementia within the GENFI cohort. *Appl Neuropsychol Adult*. 2022;29(1):112-119.
- Russell LL, Greaves CV, Bocchetta M, et al. Social cognition impairment in genetic frontotemporal dementia within the GENFI cohort. *Cortex*. 2020;133:384-398.
- Franklin HD, Russell LL, Peakman G, et al. The revised self-monitoring scale detects early impairment of social cognition in genetic frontotemporal dementia within the GENFI cohort. *Alzheimers Res Ther*. 2021;13(1):127.
- Poos JM, Russell LL, Peakman G, et al. Impairment of episodic memory in genetic frontotemporal dementia: a GENFI study. *Alzheimers Dement*. 2021;13(1):e12185.
- Bertrand A, Wen J, Rinaldi D, et al. Early cognitive, structural, and microstructural changes in presymptomatic C9orf72 carriers younger than 40 years. *JAMA Neurol*. 2018;75(2):236-245.
- Moore KM, Nicholas J, Grossman M, et al. Age at symptom onset and death and disease duration in genetic frontotemporal dementia: an international retrospective cohort study. *Lancet Neurol*. 2020;19(2):145-156.
- Miyagawa T, Brushaber D, Syrjanen J, et al. Utility of the global CDR plus NACC FTLD rating and development of scoring rules: data from the ARTEL/LEFFTDS Consortium. *Alzheimers Dement*. 2020;16(1):106-117.
- Brooks BR, Miller RG, Swash M, Munsat TL; World Federation of Neurology Research Group on Motor Neuron Diseases. El Escorial revisited: revised criteria for the diagnosis of amyotrophic lateral sclerosis. *Amyotroph Lateral Scler Other Motor Neuron Disord*. 2000;1(5):293-299.
- Morris JC, Weintraub S, Chui HC, et al. The uniform data set (UDS): clinical and cognitive variables and descriptive data from Alzheimer disease centers. *Alzheimer Dis Assoc Disord*. 2006;20(4):210-216.
- Corrigan JD, Hinkley NS. Relationships between parts A and B of the Trail Making Test. *J Clin Psychol*. 1987;43(4):402-409.
- Delis DC, Kaplan E, Kramer J, den Buisch HO, Noens ILJ, Berckelaer-Onnes IA. *D-KEFS: Delis-Kaplan Executive Function System: Color-Word Interference Test: Handling*. Pearson; 2008.
- Tombaugh TN, Kozak J, Rees L. Normative data stratified by age and education for two measures of verbal fluency: FAS and animal naming. *Arch Clin Neuropsychol*. 1999;14(2):167-177.
- Shao Z, Janse E, Visser K, Meyer AS. What do verbal fluency tasks measure? Predictors of verbal fluency performance in older adults. *Front Psychol*. 2014;5:772.
- Whiteside DM, Kealey T, Semla M, et al. Verbal fluency: language or executive function measure? *Appl Neuropsychol Adult*. 2016;23(1):29-34.
- Folstein MF, Folstein SE, McHugh PR. "Mini-mental state": a practical method for grading the cognitive state of patients for the clinician. *J Psychiatr Res*. 1975;12(3):189-198.
- Cnaan A, Laird NM, Slasor P. Using the general linear mixed model to analyse unbalanced repeated measures and longitudinal data. *Stat Med*. 1997;16(20):2349-2380.

39. Mahoney CJ, Downey LE, Ridgway GR, et al. Longitudinal neuroimaging and neuropsychological profiles of frontotemporal dementia with C9ORF72 expansions. *Alzheimers Res Ther.* 2012;4(5):41.
40. Khan BK, Yokoyama JS, Takada LT, et al. Atypical, slowly progressive behavioural variant frontotemporal dementia associated with C9ORF72 hexanucleotide expansion. *J Neurol Neurosurg Psychiatry.* 2012;83(4):358-364.
41. Rohrer JD, Warren JD. Phenotypic signatures of genetic frontotemporal dementia. *Curr Opin Neurol.* 2011;24(6):542-549.
42. Lee SE, Sias AC, Mandelli ML, et al. Network degeneration and dysfunction in presymptomatic C9ORF72 expansion carriers. *Neuroimage Clin.* 2017;14:286-297.
43. Lulé DE, Müller HP, Finsel J, et al. Deficits in verbal fluency in presymptomatic C9orf72 mutation gene carriers: a developmental disorder. *J Neurol Neurosurg Psychiatry.* 2020;91(11):1195-1200.
44. Kaplan E, Goodglass H, Weintraub S. *Boston Naming Test.* Pro-ed; 2001.
45. Piguet O, Hodges JR. Behavioural-variant frontotemporal dementia: an update. *Demet Neuropsychol.* 2013;7(1):10.
46. Freeman RQ, Giovannetti T, Lamar M, et al. Visuoconstructional problems in dementia: contribution of executive systems functions. *Neuropsychology.* 2000;14(3):415-426.
47. Kinnunen KM, Cash DM, Poole T, et al. Presymptomatic atrophy in autosomal dominant Alzheimer's disease: a serial magnetic resonance imaging study. *Alzheimers Dement.* 2018;14(1):43-53.

Neurology[®]

Longitudinal Cognitive Changes in Genetic Frontotemporal Dementia Within the GENFI Cohort

Jackie M. Poos, Amy MacDougall, Esther van den Berg, et al.
Neurology 2022;99:e281-e295 Published Online before print April 28, 2022
DOI 10.1212/WNL.0000000000200384

This information is current as of April 28, 2022

Updated Information & Services	including high resolution figures, can be found at: http://n.neurology.org/content/99/3/e281.full
References	This article cites 45 articles, 7 of which you can access for free at: http://n.neurology.org/content/99/3/e281.full#ref-list-1
Subspecialty Collections	This article, along with others on similar topics, appears in the following collection(s): Attention http://n.neurology.org/cgi/collection/attention Executive function http://n.neurology.org/cgi/collection/executive_function Frontotemporal dementia http://n.neurology.org/cgi/collection/frontotemporal_dementia Memory http://n.neurology.org/cgi/collection/memory Neuropsychological assessment http://n.neurology.org/cgi/collection/neuropsychological_assessment
Permissions & Licensing	Information about reproducing this article in parts (figures, tables) or in its entirety can be found online at: http://www.neurology.org/about/about_the_journal#permissions
Reprints	Information about ordering reprints can be found online: http://n.neurology.org/subscribers/advertise

Neurology® is the official journal of the American Academy of Neurology. Published continuously since 1951, it is now a weekly with 48 issues per year. Copyright © 2022 The Author(s). Published by Wolters Kluwer Health, Inc. on behalf of the American Academy of Neurology. All rights reserved. Print ISSN: 0028-3878. Online ISSN: 1526-632X.



Appendix 2 Coinvestigators

Name	Location	Role	Contribution
Martin N. Rossor, MD, FRCP	Dementia Research Centre, Department of Neurodegenerative Disease, UCL Institute of Neurology, Queen Square, London, UK	Coinvestigator	Participant recruitment.
Nick C. Fox , MD, FRCP	Dementia Research Centre, Department of Neurodegenerative Disease, UCL Institute of Neurology, Queen Square, London, UK	Coinvestigator	Participant recruitment.
Jason D. Warren , PhD, FRACP	Dementia Research Centre, Department of Neurodegenerative Disease, UCL Institute of Neurology, Queen Square, London, UK	Coinvestigator	Participant recruitment.
Ione Woollacott , MRCP	Dementia Research Centre, Department of Neurodegenerative Disease, UCL Institute of Neurology, Queen Square, London, UK	Researcher Clinical	Performing clinical examination and sample collection.
Rachelle Shafei, MRCP	Dementia Research Centre, Department of Neurodegenerative Disease, UCL Institute of Neurology, Queen Square, London, UK	Researcher Clinical	Performing clinical examination and sample collection.
Carolyn Heller, MSc	Dementia Research Centre, Department of Neurodegenerative Disease, UCL Institute of Neurology, Queen Square, London, UK	Researcher Clinical	Data analysis and coordination
Imogen J Swift, MSc	Dementia Research Centre, Department of Neurodegenerative	Researcher Clinical	Data analysis and coordination

	Disease, UCL Institute of Neurology, Queen Square, London, UK		
Katrina Moore, PhD	Dementia Research Centre, Department of Neurodegenerative Disease, UCL Institute of Neurology, Queen Square, London, UK	Site Coordinator	Participant recruitment, coordinating research visits, data upload.
Aitana Sogorb Esteve, PhD	Dementia Research Centre, Department of Neurodegenerative Disease, UCL Institute of Neurology, Queen Square, London, UK	Coinvestigator	Biomarker data analysis
Annabel Nelson, BSc	Dementia Research Centre, Department of Neurodegenerative Disease, UCL Institute of Neurology, Queen Square, London, UK	Site Coordinator	Participant recruitment, coordinating research visits, data upload
Arabella Bouzigues, MSc	Dementia Research Centre, Department of Neurodegenerative Disease, UCL Institute of Neurology, Queen Square, London, UK	Coinvestigator	Lead coordinator, data management
Caroline V. Greaves, BSc	Dementia Research Centre, Department of Neurodegenerative Disease, UCL Institute of Neurology, Queen Square, London, UK	Coinvestigator	Participant engagement lead
David L. Cash, PhD	Dementia Research Centre, Department of Neurodegenerative Disease, UCL Institute of Neurology, Queen Square, London, UK	Coinvestigator	MR physicist, setting up GENFI MRI protocol
Hanya Benotmane, Bsc	Dementia Research Centre, Department of Neurodegenerative Disease, UCL Institute	Coinvestigator	Genetics analysis

	of Neurology, Queen Square, London, UK		
Emily Todd, MRes	Dementia Research Centre, Department of Neurodegenerative Disease, UCL Institute of Neurology, Queen Square, London, UK	Coinvestigator	Imaging data analysis
Henrik Zetterberg, PhD	Dementia Research Centre, Department of Neurodegenerative Disease, UCL Institute of Neurology, Queen Square, London, UK; Department of Psychiatry and Neurochemistry, the Sahlgrenska Academy at the University of Gothenburg, Mölndal, Sweden	Coinvestigator	Biomarker data analysis
Kiran Samra, MRCP	Dementia Research Centre, Department of Neurodegenerative Disease, UCL Institute of Neurology, Queen Square, London, UK	Coinvestigator	Performing clinical examination and sample collection
Martina Bocchetta, PhD	Dementia Research Centre, Department of Neurodegenerative Disease, UCL Institute of Neurology, Queen Square, London, UK	Coinvestigator	Imaging data analysis
Rita Guerreiro, PhD	Center for Neurodegenerative Science, Van Andel Institute, Grand Rapids, Michigan, MI 49503, USA	Coinvestigator	Genetic analysis of samples
Jose Bras, PhD	Center for Neurodegenerative Science, Van Andel Institute, Grand	Coinvestigator	Genetic analysis of samples

	Rapids, Michigan, MI 49503, USA		
David L. Thomas, PhD	Neuroimaging Analysis Centre, Department of Brain Repair and Rehabilitation, UCL Institute of Neurology, Queen Square, London, UK	MRI Physicist	Designed GENFI MRI protocol, analysis of MR imaging.
Jennifer Nicholas, PhD	Department of Medical Statistics, London School of Hygiene and Tropical Medicine, London, UK	Statistician	Statistical analysis of GENFI data.
Simon Mead, PhD	MRC Prion Unit, Department of Neurodegenerative Disease, UCL Institute of Neurology, Queen Square, London, UK	Genetic Guardian	Upload of results of molecular genetic testing.
Lieke Meeter, MD	Department of Neurology, Erasmus Medical Center, Rotterdam, Netherlands	Researcher Clinical	Performing clinical examination and sample collection.
Jessica Panman, MSc	Department of Neurology, Erasmus Medical Center, Rotterdam, Netherlands	Site Coordinator	Participant recruitment, coordinating research visits, data upload.
Lucia Giannini, MD	Department of Neurology, Erasmus Medical Center, Rotterdam, Netherlands	Researcher Clinical	Performing clinical examination and sample collection.
Rick van Minkelen, PhD	Department of Clinical Genetics, Erasmus Medical Center, Rotterdam, Netherlands	Genetic Guardian	Upload of results of molecular genetic testing

Myriam Barandiaran, PhD	Cognitive Disorders Unit, Department of Neurology, Donostia University Hospital, San Sebastian, Gipuzkoa, Spain; Neuroscience Area, Biodonostia Health Research Insitute, San Sebastian, Gipuzkoa, Spain	Researcher Neuropsychology	Performing neuropsychological assessment.
Begoña Indakoetxea, MD	Cognitive Disorders Unit, Department of Neurology, Donostia University Hospital, San Sebastian, Gipuzkoa, Spain; Neuroscience Area, Biodonostia Health Research Insitute, San Sebastian, Gipuzkoa, Spain	Researcher Clinical	Performing clinical examination and sample collection.
Alazne Gabilondo, MD	Neuroscience Area, Biodonostia Health Research Insitute, San Sebastian, Gipuzkoa, Spain	Site Coordinator	Participant recruitment, coordinating research visits, data upload.
Mikel Tainta, MD	Neuroscience Area, Biodonostia Health Research Insitute, San Sebastian, Gipuzkoa, Spain	Researcher Clinical	Performing clinical examination and sample collection.
María de Arriba, BSc	Neuroscience Area, Biodonostia Health Research Insitute, San Sebastian, Gipuzkoa, Spain	Researcher Neuropsychology	Performing neuropsychological assessment.
Ana Gorostidi, PhD	Neuroscience Area, Biodonostia Health Research Insitute, San Sebastian, Gipuzkoa, Spain	Coinvestigator	Genetic analysis of samples.

Miren Zulaica, BSc	Neuroscience Area, Biodonostia Health Research Insitute, San Sebastian, Gipuzkoa, Spain	Genetic Guardian	Upload of results of molecular genetic testing.
Jorge Villanua, MD, PhD	OSATEK, University of Donostia, San Sebastian, Gipuzkoa, Spain	MRI Physicist	Carry out GENFI MRI protocol.
Zigor Díaz	CITA Alzheimer, San Sebastian, Gipuzkoa, Spain	Radiographer	Carry out MRI protocol and MRI upload.
Ana Gorostidi, PhD	Neuroscience Area, Biodonostia Health Research Insitute, San Sebastian, Gipuzkoa, Spain	Coinvestigator	Data collection
Marta Cañada	CITA Alzheimer, San Sebastian, Gipuzkoa, Spain	Coinvestigator	Data collection
Patricia Alves, PhD	Neuroscience Area, Biodonostia Health Research Insitute, San Sebastian, Gipuzkoa, Spain	Coinvestigator	Data collection
Sergi Borrego-Ecija, MD	Alzheimer's disease and Other Cognitive Disorders Unit, Neurology Service, Hospital Clínic, Barcelona, Spain	Coinvestigator	Participant assessment.
Jaume Olives, MSc	Alzheimer's disease and Other Cognitive Disorders Unit, Neurology Service, Hospital Clínic, Barcelona, Spain	Site Coordinator	Participant recruitment, coordinating research visits, data upload.
Albert Lladó, PhD	Alzheimer's disease and Other Cognitive Disorders Unit, Neurology Service,	Researcher Clinical	Performing clinical examination and sample collection.

	Hospital Clínic, Barcelona, Spain		
Mircea Balasa, PhD	Alzheimer's disease and Other Cognitive Disorders Unit, Neurology Service, Hospital Clínic, Barcelona, Spain	Researcher Clinical	Performing clinical examination and sample collection.
Anna Antonell, PhD	Alzheimer's disease and Other Cognitive Disorders Unit, Neurology Service, Hospital Clínic, Barcelona, Spain	Genetic Guardian	Upload of results of molecular genetic testing.
Nuria Bargalló, PhD	Imaging Diagnostic Center, Hospital Clínic, Barcelona, Spain	Researcher Imaging	Analysis of imaging.
Enrico Premi, MD	Centre for Neurodegenerative Disorders, Neurology Unit, Department of Clinical and Experimental Sciences, University of Brescia, Brescia, Italy	Site Coordinator	Participant recruitment, coordinating research visits, data upload.
Maura Cosseddu, MPsych	Centre for Neurodegenerative Disorders, Neurology Unit, Department of Clinical and Experimental Sciences, University of Brescia, Brescia, Italy	Researcher Neuropsychology	Performing neuropsychological assessment.
Stefano Gazzina, MD	Centre for Neurodegenerative Disorders, Neurology Unit, Department of Clinical and Experimental Sciences, University of Brescia, Brescia, Italy	Researcher Clinical	Performing clinical examination and sample collection.

Alessandro Padovani, MD, PhD	Centre for Neurodegenerative Disorders, Neurology Unit, Department of Clinical and Experimental Sciences, University of Brescia, Brescia, Italy	Coinvestigator	Participant recruitment.
Alberto Benussi, MD	Centre for Neurodegenerative Disorders, Neurology Unit, Department of Clinical and Experimental Sciences, University of Brescia, Brescia, Italy	Coinvestigator	Data collection
Valentina Cantoni, MSc	Centre for Neurodegenerative Disorders, Neurology Unit, Department of Clinical and Experimental Sciences, University of Brescia, Brescia, Italy	Coinvestigator	Data collection
Roberto Gasparotti, MD	Neuroradiology Unit, University of Brescia, Brescia, Italy	Researcher Imaging	Analysis of imaging.
Silvana Archetti, MBiolSci	Biotechnology Laboratory, Department of Diagnostics, Spedali Civili Hospital, Brescia, Italy	Genetic Guardian	Upload of results of molecular genetic testing.
Sandra Black, MD	Sunnybrook Health Sciences Centre, Sunnybrook Research Institute, University of Toronto, Toronto, Canada	Coinvestigator	Participant recruitment.
Sara Mitchell, MD	Sunnybrook Health Sciences Centre, Sunnybrook Research Institute, University of	Coinvestigator	Participant recruitment.

	Toronto, Toronto, Canada		
Ekaterina Rogaeva, PhD	Tanz Centre for Research in Neurodegenerative Diseases, University of Toronto, Toronto, Canada	Coinvestigator	Genetic analysis of samples.
Morris Freedman, MD	Baycrest Health Sciences, Rotman Research Institute, University of Toronto, Toronto, Canada	Coinvestigator	Participant recruitment.
Ron Keren, MD	The University Health Network, Toronto Rehabilitation Institute, Toronto, Canada	Coinvestigator	Participant recruitment.
David Tang-Wai, MD	The University Health Network, Toronto Rehabilitation Institute, Toronto, Canada	Coinvestigator	Participant recruitment.
Linn Öijerstedt, MD	Center for Alzheimer Research, Division of Neurogeriatrics, Department of Neurobiology, Care Sciences and Society, Bioclinicum, Karolinska Institutet, Solna, Sweden; Unit for Hereditary Dementias, Theme Aging, Karolinska University Hospital, Solna, Sweden	Site Coordinator	Participant recruitment, coordinating research visits, data upload.
Christin Andersson, PhD	Department of Clinical Neuroscience, Karolinska Institutet, Stockholm, Sweden	Researcher Neuropsychology	Performing neuropsychological assessment.

Vesna Jelic, MD	Division of Clinical Geriatrics, Karolinska Institutet, Stockholm, Sweden	Researcher Clinical	Performing clinical examination and sample collection.
Hakan Thonberg, MD	Center for Alzheimer Research, Division of Neurogeriatrics, Karolinska Institutet, Stockholm, Sweden	Genetic Guardian	Upload of results of molecular genetic testing.
Andrea Arighi, MD	Fondazione IRCCS Ca' Granda Ospedale Maggiore Policlinico, Neurodegenerative Diseases Unit, Milan, Italy; University of Milan, Centro Dino Ferrari, Milan, Italy	Researcher Clinical	Performing clinical examination and sample collection.
Chiara Fenoglio, PhD	Fondazione IRCCS Ca' Granda Ospedale Maggiore Policlinico, Neurodegenerative Diseases Unit, Milan, Italy; University of Milan, Centro Dino Ferrari, Milan, Italy	Genetic Guardian	Upload of results of molecular genetic testing.
Elio Scarpini, MD	Fondazione IRCCS Ca' Granda Ospedale Maggiore Policlinico, Neurodegenerative Diseases Unit, Milan, Italy; University of Milan, Centro Dino Ferrari, Milan, Italy	Coinvestigator	Participant recruitment.
Giorgio Fumagalli, MD	Fondazione IRCCS Ca' Granda Ospedale Maggiore Policlinico, Neurodegenerative Diseases Unit, Milan, Italy; University of Milan, Centro Dino Ferrari, Milan, Italy	Researcher Clinical	Performing clinical examination and sample collection.

Thomas Cope, MRCP	Department of Clinical Neurosciences, University of Cambridge, Cambridge, UK	Coinvestigator	Performing clinical examination and sample collection.
Carolyn Timberlake, BSc	Department of Clinical Neurosciences, University of Cambridge, Cambridge, UK	Site Coordinator	Participant recruitment, coordinating research visits, data upload.
Timothy Rittman, MRCP	Department of Clinical Neurosciences, University of Cambridge, Cambridge, UK	Coinvestigator	Performing clinical examination and sample collection.
Christen Shoesmith, MD	The University of Western Ontario, London, Ontario, Canada	Coinvestigator	Participant recruitment.
Robert Bartha, PhD	Department of Medical Biophysics, The University of Western Ontario, London, Ontario, Canada; Centre for Functional and Metabolic Mapping, Robarts Research Institute, The University of Western Ontario, London, Ontario, Canada	Coinvestigator	Analysis of imaging.
Rosa Rademakers, PhD	Department of Neurosciences, Mayo Clinic, Jacksonville, Florida, USA	Coinvestigator	Genetic analysis of samples.
Carlo Wilke, MD	Department of Neurodegenerative Diseases, Hertie, Institute for Clinical Brain Research and Center of Neurology, University of	Site Coordinator	Participant recruitment, coordinating research visits, data upload.

	Tübingen, Tübingen, Germany; Center for Neurodegenerative Diseases (DZNE), Tübingen, Germany		
Lisa Graf	Department of Neurodegenerative Diseases, Hertie, Institute for Clinical Brain Research and Center of Neurology, University of Tübingen, Tübingen, Germany	Coinvestigator	Data collection
Hans Otto Karnath, MD	Division of Neuropsychology, Hertie Institute for Clinical Brain Research and Center of Neurology, University of Tübingen, Tübingen, Germany	Coinvestigator	Performs neuropsychological assessment
Benjamin Bender, MD	Department of Diagnostic and Interventional Neuroradiology, University of Tübingen, Tübingen, Germany	Radiographer	Carry out MRI protocol and MRI upload.
Rose Bruffaerts, MD, PhD	Laboratory for Cognitive Neurology, Department of Neurosciences, KU Leuven, Leuven, Belgium	Study Coordinator	Participant recruitment, coordinating research visits, data upload.
Philip Van Damme, MD, PhD	Neurology Service, University Hospitals Leuven, Belgium; Laboratory for Neurobiology, VIB, KU Leuven Centre for Brain Research, Leuven, Belgium	Researcher Clinical	Performing clinical examination and sample collection.

Mathieu Vandebulcke, MD, PhD	Geriatric Psychiatry Service, University Hospitals Leuven, Belgium; Neuropsychiatry, Department of Neurosciences, KU Leuven, Leuven, Belgium	Researcher Clinical	Performing clinical examination and sample collection.
Annick Vogels	Department of Human Genetics, KU Leuven, Leuven, Belgium	Coinvestigator	Data collection
Koen Poesen, MD PhD	Laboratory for Molecular Neurobiomarker Research, KU Leuven, Leuven, Belgium	Coinvestigator	Data collection
Catarina B. Ferreira, MSc	Laboratory of Neurosciences, Institute of Molecular Medicine, Faculty of Medicine, University of Lisbon, Lisbon, Portugal	Research Assistant	Data collection, upload and management.
Gabriel Miltenberger, PhD	Faculty of Medicine, University of Lisbon, Lisbon, Portugal	Genetic Guardian	Upload of results of molecular genetic testing.
Frederico Simões do Couto	Faculdade de Medicina, Universidade Católica Portuguesa	Coinvestigator	Data collection
Carolina Maruta, MPsych, PhD	Laboratory of Language Research, Centro de Estudos Egas Moniz, Faculty of Medicine, University of Lisbon, Lisbon, Portugal	Researcher Neuropsychology	Performing neuropsychological assessment.
Ana Verdelho, MD, PhD	Department of Neurosciences and Mental Health, Centro Hospitalar Lisboa	Researcher Clinical	Performing clinical examination and sample collection.

	Norte and Hospital de Santa Maria & Faculty of Medicine, University of Lisbon, Lisbon, Portugal		
Sónia Afonso, BSc	Instituto Ciencias Nucleares Aplicadas a Saude, Universidade de Coimbra, Coimbra, Portugal	Coinvestigator	Participant assessment.
Ricardo Taipa, MD, PhD	Neuropathology Unit and Department of Neurology, Centro Hospitalar do Porto, Hospital de Santo António, Oporto, Portugal	Coinvestigator	Participant recruitment.
Paola Caroppo, MD, PhD	Fondazione IRCCS Istituto Neurologico Carlo Besta, Milano, Italy	Coinvestigator	Participant recruitment.
Giuseppe Di Fede, MD, PhD	Fondazione IRCCS Istituto Neurologico Carlo Besta, Milano, Italy	Coinvestigator	Performing clinical examination and sample collection.
Giorgio Giaccone, MD	Fondazione IRCCS Istituto Neurologico Carlo Besta, Milano, Italy	Coinvestigator	Participant recruitment.
Sara Prioni, PsyD	Fondazione IRCCS Istituto Neurologico Carlo Besta, Milano, Italy	Coinvestigator	Participant assessment.
Veronica Redaelli, MD	Fondazione IRCCS Istituto Neurologico Carlo Besta, Milano, Italy	Coinvestigator	Analysis of imaging.
Giacomina Rossi, MSc	Fondazione IRCCS Istituto Neurologico Carlo Besta, Milano, Italy	Coinvestigator	Genetic analysis of samples

Diana Duro, MPsych	Faculty of Medicine, University of Coimbra, Coimbra, Portugal	Researcher Neuropsychology	Participant recruitment, coordinating research visits, data upload.
Maria Rosario Almeida, PhD	Faculty of Medicine, University of Coimbra, Coimbra, Portugal	Genetic Guardian	Performing neuropsychological assessment.
Miguel Castelo Branco, MD, PhD	Faculty of Medicine, University of Coimbra, Coimbra, Portugal	Coinvestigator	Upload of results of molecular genetic testing.
Maria João Leitão, BSc	Centre of Neurosciences and Cell Biology, Universidade de Coimbra, Coimbra, Portugal	Research Assistant	Participant assessment.
Miguel Tábuas Pereira, MD	Neurology Department, Centro Hospitalar e Universitário de Coimbra, Coimbra, Portugal	Site Coordinator	Data collection, upload and management.
Beatriz Santiago, MD	Neurology Department, Centro Hospitalar e Universitário de Coimbra, Coimbra, Portugal	Researcher Clinical	Participant recruitment, coordinating research visits, data upload.
Serge Gauthier, MD	Alzheimer Disease Research Unit, McGill Centre for Studies in Aging, Department of Neurology & Neurosurgery, McGill University, Montreal, Québec, Canada	Coinvestigator	Performing clinical examination and sample collection.
Pedro Rosa Neto, MD, PhD	Translational Neuroimaging Laboratory, McGill Centre for Studies in Aging, McGill	Researcher Imaging	Participant recruitment.

	University, Montreal, Québec, Canada		
Michele Veldsman, PhD	Nuffield Department of Clinical Neurosciences, Medical Sciences Division, University of Oxford, Oxford, UK	Site Coordinator	Analysis of imaging
Paul Thompson	Division of Neuroscience and Experimental Psychology, Wolfson Molecular Imaging Centre, University of Manchester, Manchester, UK	Study Coordinator	Participant recruitment, coordinating research visits, data upload.
Tobias Langheinrich, FRCP MD	Division of Neuroscience and Experimental Psychology, Wolfson Molecular Imaging Centre, University of Manchester, Manchester, UK; Manchester Centre for Clinical Neurosciences, Department of Neurology, Salford Royal NHS Foundation Trust, Manchester, UK	Coinvestigator	Performing clinical examination and sample collection
Catharina Prix, MD	Neurologische Klinik, Ludwig Maximilians, Universität München, Munich, Germany	Site Coordinator	Participant recruitment, coordinating research visits, data upload.
Tobias Hoegen, MD	Neurologische Klinik, Ludwig Maximilians, Universität München, Munich, Germany	Genetic Guardian	Upload of results of molecular genetic testing.
Elisabeth Wlasich, Mag.rer.nat.	Neurologische Klinik, Ludwig Maximilians, Universität München, Munich, Germany	Researcher Neuropsychology	Performing neuropsychological assessment.

Sandra Loosli, MD	Neurologische Klinik, Ludwig Maximilians, Universität München, Munich, Germany	Coinvestigator	Participant assessment.
Sonja Schönecker, MD	Neurologische Klinik, Ludwig Maximilians, Universität München, Munich, Germany	Coinvestigator	Participant assessment.
Elisa Semler, Dr.hum.bio, Dipl. Psych	Department of Neurology, University of Ulm, Ulm	Coinvestigator	Participant recruitment, coordinating research visits, data upload.
Sarah Anderl-Straub, Dipl. Psych	Department of Neurology, University of Ulm, Ulm	Coinvestigator	Participant assessment.
Jolina Lombardi	Department of Neurology, University of Ulm, Ulm		
Benedetta Nacmias	Department of Neuroscience, Psychology, Drug Research and Child Health, University of Florence, Florence, Italy	Site Coordinator	Participant recruitment, coordinating research visits, data upload.
Camilla Ferrari	Department of Neuroscience, Psychology, Drug Research and Child Health, University of Florence, Florence, Italy	Researcher Clinical	Performing clinical examination and sample collection.
Cristina Polito	Department of Biomedical, Experimental and Clinical Sciences "Mario Serio", Nuclear Medicine Unit, University of Florence, Florence, Italy	Researcher Neuropsychology	Performing neuropsychological assessment.

Gemma Lombardi	Department of Neuroscience, Psychology, Drug Research and Child Health, University of Florence, Florence, Italy	Researcher Clinical	Performing clinical examination and sample collection.
Valentina Bessi	Department of Neuroscience, Psychology, Drug Research and Child Health, University of Florence, Florence, Italy	Coinvestigator	Participant assessment.
Agnès Camuzat	Sorbonne Université, Paris Brain Institute – Institut du Cerveau – ICM, Inserm U1127, CNRS UMR 7225, AP-HP - Hôpital Pitié-Salpêtrière, Paris, France		Data collection
Alexis Brice, MD PhD	Sorbonne Université, Paris Brain Institute – Institut du Cerveau – ICM, Inserm U1127, CNRS UMR 7225, AP-HP - Hôpital Pitié-Salpêtrière, Paris, France		Data collection
Anne Bertrand, MD PhD	Sorbonne Université, Paris Brain Institute – Institut du Cerveau – ICM, Inserm U1127, CNRS UMR 7225, AP-HP - Hôpital Pitié-Salpêtrière, Paris, France; Inria, Aramis project-team, F-75013, Paris, France; Centre pour l'Acquisition et le Traitement des Images, Institut du		Data collection

	Cerveau et la Moelle, Paris, France	
Aurélie Funkiewiez	Centre de référence des démences rares ou précoces, IM2A, Département de Neurologie, AP-HP - Hôpital Pitié- Salpêtrière, Paris, France; Sorbonne Université, Paris Brain Institute – Institut du Cerveau – ICM, Inserm U1127, CNRS UMR 7225, AP-HP - Hôpital Pitié-Salpêtrière, Paris, France	Data collection
Daisy Rinaldi	Centre de référence des démences rares ou précoces, IM2A, Département de Neurologie, AP-HP - Hôpital Pitié- Salpêtrière, Paris, France; Sorbonne Université, Paris Brain Institute – Institut du Cerveau – ICM, Inserm U1127, CNRS UMR 7225, AP-HP - Hôpital Pitié-Salpêtrière, Paris, France; Département de Neurologie, AP-HP - Hôpital Pitié- Salpêtrière, Paris, France	Data collection
Dario Saracino	Sorbonne Université, Paris Brain Institute – Institut du Cerveau – ICM, Inserm U1127, CNRS UMR 7225, AP- HP - Hôpital Pitié- Salpêtrière, Paris, France; Inria, Aramis project-team, F-75013,	Data collection

	Paris, France; Centre de référence des démences rares ou précoces, IM2A, Département de Neurologie, AP-HP - Hôpital Pitié-Salpêtrière, Paris, France	
Olivier Colliot, PhD	Sorbonne Université, Paris Brain Institute – Institut du Cerveau – ICM, Inserm U1127, CNRS UMR 7225, AP-HP - Hôpital Pitié-Salpêtrière, Paris, France; Inria, Aramis project-team, F-75013, Paris, France; Centre pour l'Acquisition et le Traitement des Images, Institut du Cerveau et la Moelle, Paris, France	Data collection
Sabrina Sayah	Sorbonne Université, Paris Brain Institute – Institut du Cerveau – ICM, Inserm U1127, CNRS UMR 7225, AP-HP - Hôpital Pitié-Salpêtrière, Paris, France	Data collection
Adeline Rollin	CHU, CNR-MAJ, Labex Distalz, LiCEND Lille, France	Data collection
Gregory Kuchcinski	Univ Lille, France; Inserm 1172, Lille, France; CHU, CNR-MAJ, Labex Distalz, LiCEND Lille, France	Data collection
Maxime Bertoux, PhD	Inserm 1172, Lille, France; CHU, CNR-	Data collection

	MAJ, Labex Distalz, LiCEND Lille, France	
Thibaud Lebouvier	Univ Lille, France; Inserm 1172, Lille, France; CHU, CNR- MAJ, Labex Distalz, LiCEND Lille, France	Data collection
Vincent Deramecourt	Univ Lille, France; Inserm 1172, Lille, France; CHU, CNR- MAJ, Labex Distalz, LiCEND Lille, France	Data collection
