

Supplementary Material



Figure S1: Blood electrolytes levels and renal function

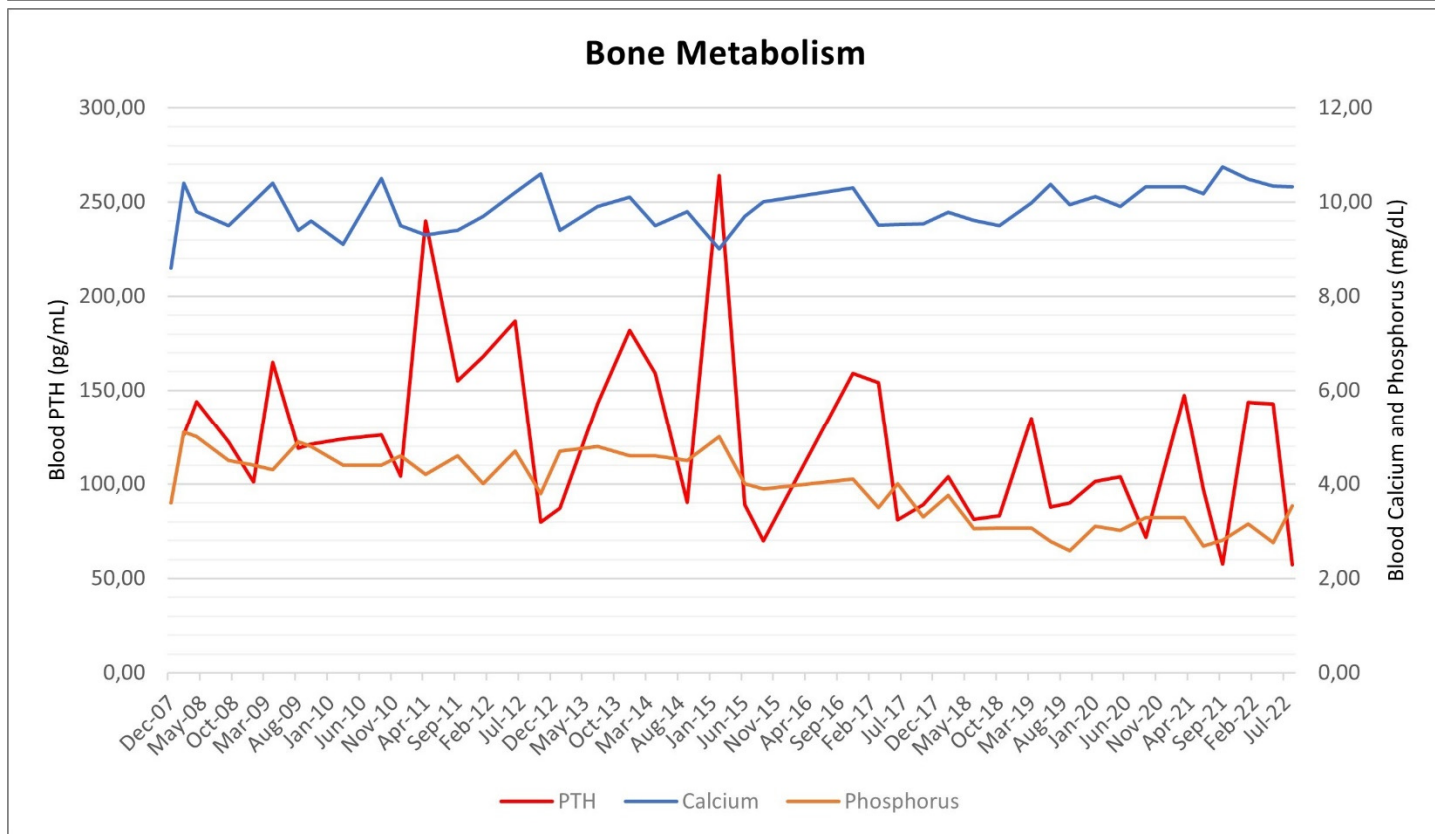
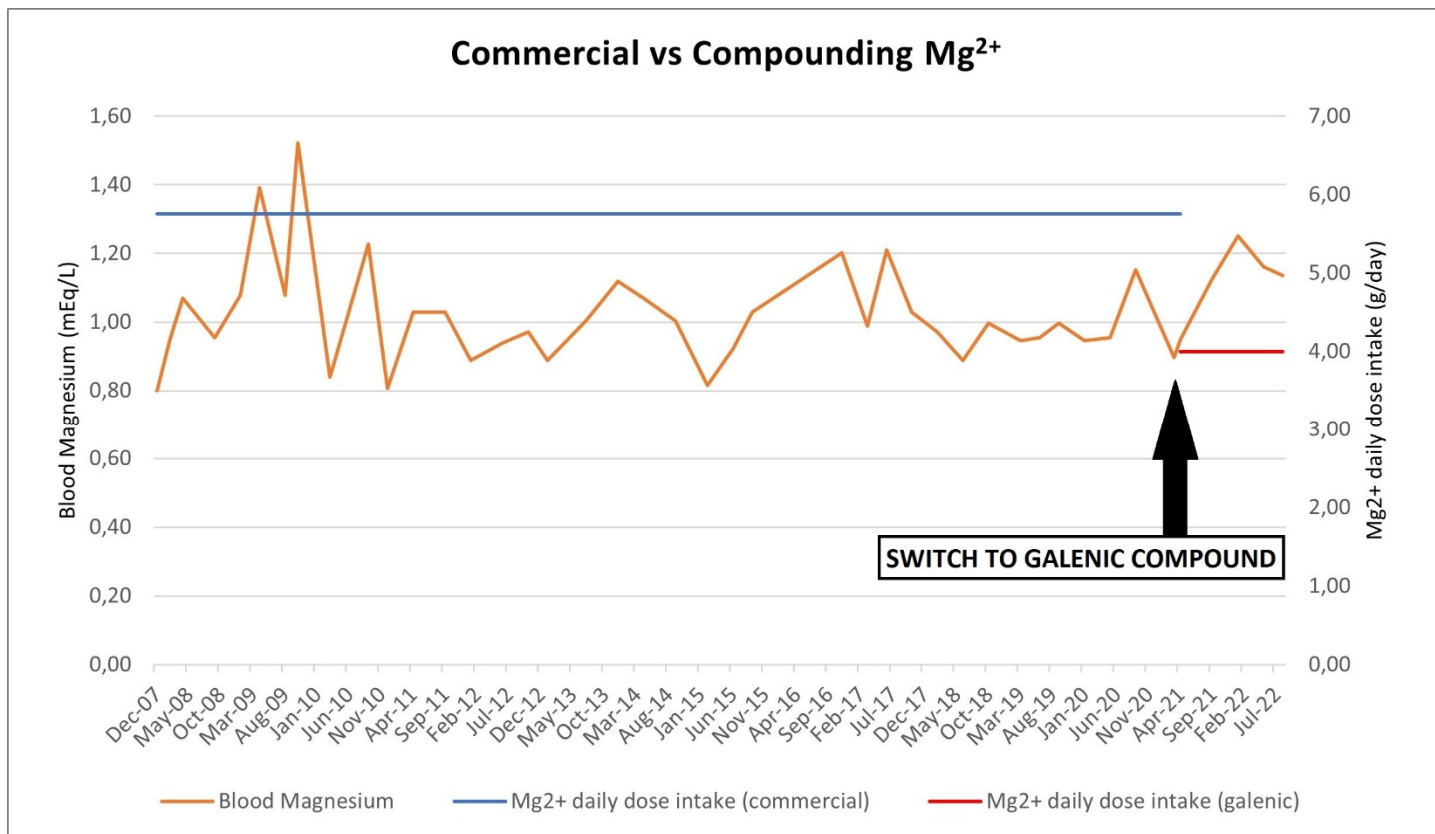


Figure S2: Blood magnesium levels related to daily magnesium doses and parameters of bone metabolism.

**VISUAL ANALOG SCALE TEST BEFORE THE THERAPEUTIC SWITCH TO THE GALENIC COMPOUND**

**Parent**

	Never	Almost never	Sometimes	Often	Almost always
Was it hard for your child to take the therapy?	0	1	2	3	✗
Has your child forgotten to take the therapy?	0	1	✗	3	4
Did your child dislike having to take the therapy all the time?	0	1	2	✗	4
	Never	Almost never	Sometimes	Often	Almost always
Did you receive information about your child's general care?	0	1	2	✗	4
Did the staff respond to your child's needs?	0	1	✗	3	4
In general, was your child's health good?	0	✗	2	3	4

**Patient**

	Never	Almost never	Sometimes	Often	Almost always
Was it hard for you to take the therapy?	0	1	2	3	✗
Have you ever forgotten to take the therapy?	0	1	2	✗	4
Did you dislike having to take the therapy all the time?	0	1	2	3	✗
	Never	Almost never	Sometimes	Often	Almost always
Did you receive information about your general care?	0	1	2	✗	4
Did the staff respond to your needs?	0	✗	2	3	4
In general, was your health good?	0	✗	2	3	4

**VISUAL ANALOG SCALE TEST AFTER THE THERAPEUTIC SWITCH TO THE GALENIC COMPOUND**

**Parent**

	Never	Almost never	Sometimes	Often	Almost always
Is it hard for your child to take the therapy?	✗	1	2	3	4
Does your child forget to take the therapy?	✗	1	2	3	4
Does your child dislike having to take the therapy all the time?	✗	1	2	3	4
	Never	Almost never	Sometimes	Often	Almost always
Do you receive information about your child's general care?	0	1	2	3	✗
Does the staff respond to your child's needs?	0	1	2	3	✗
In general, is your child's health good?	0	1	2	✗	4

**Patient**

	Never	Almost never	Sometimes	Often	Almost always
Is it hard for you take the therapy?	✗	1	2	3	4
Do you forget to take the therapy?	✗	1	2	3	4
Do you dislike taking the therapy all the time?	✗	1	2	3	4
	Never	Almost never	Sometimes	Often	Almost always
Do you receive information about your general care?	0	1	2	3	✗
Does the staff respond to your needs?	0	1	2	3	✗
In general, is your health good?	0	1	2	3	✗

**Figure S3:** VAS questionnaire submitted to the patient and parent BEFORE and AFTER the transition to galenic compound.