

Supplemental data

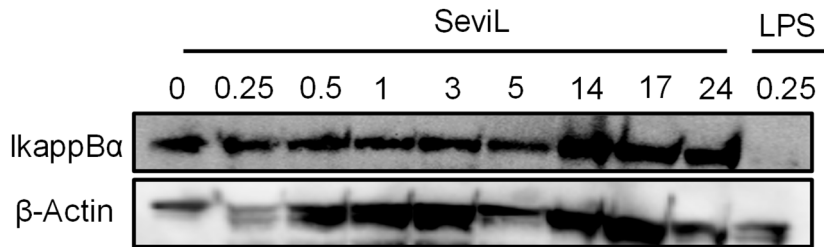


Figure S1: Effect of SeviL and LPS on IkappaBα in RAW264.7 cells.

SeviL (10 $\mu\text{g/ml}$) or LPS (1 $\mu\text{g/mL}$) were treated for several time points. The number from 0 to 0.25 indicates the treatment time (hour). Appearance of IkappaBα negatively regulates the activation of NF κ B.