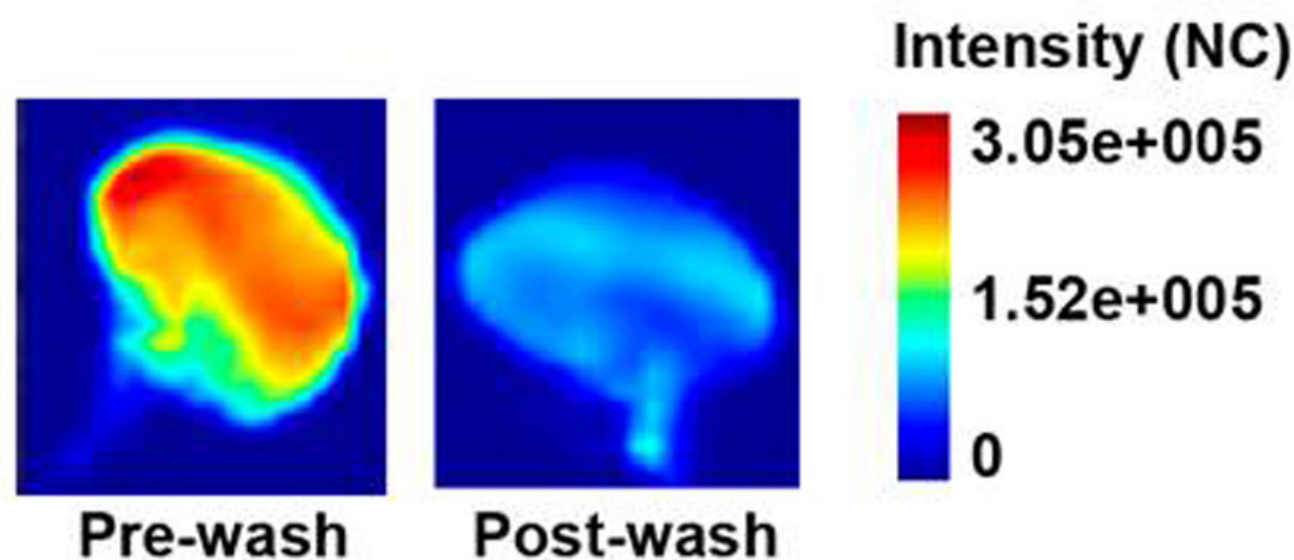
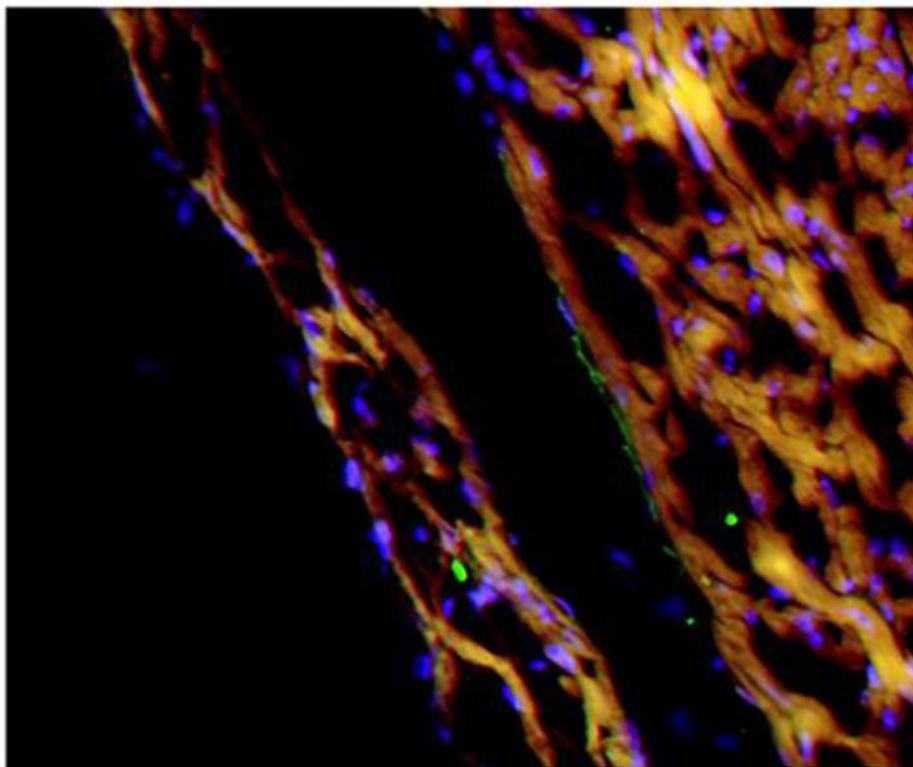
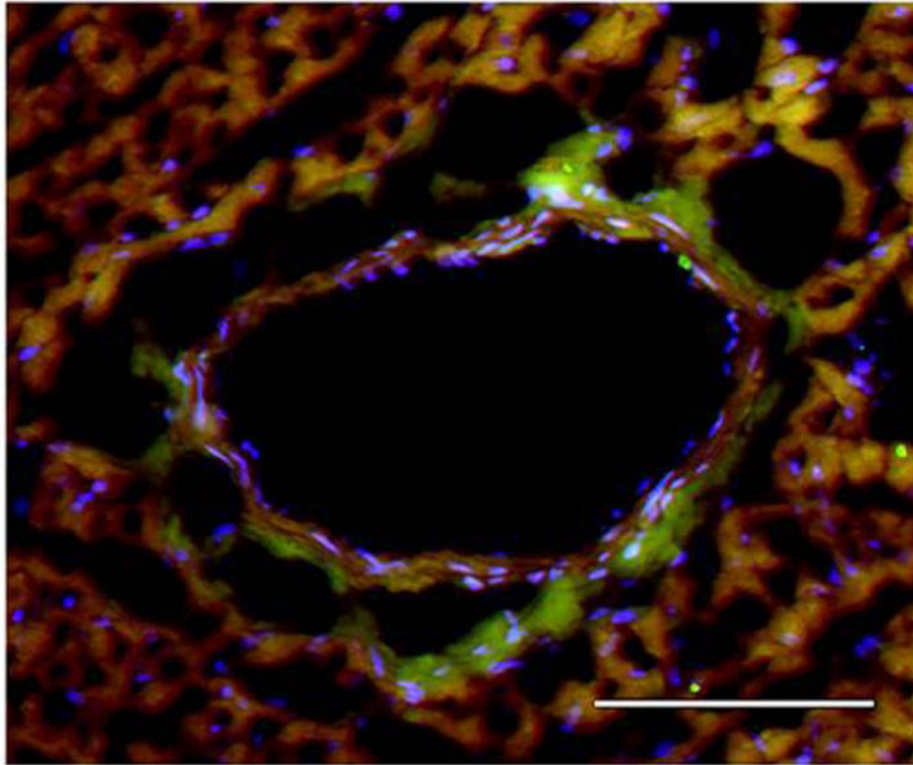


## Suppl Figure 3



**Suppl. Figure 3. Characterization of Ergidina localization in ischemic rat kidneys.** Rat kidneys were excised, incannulated and perfused as described in material and methods. Cy5.5-labeled Ergidina (0,5mg in 1ml of Celsior) was injected through the renal artery. Each organ was visualized, washed using Celsior (20ml) and analyzed again by time-domain optical imaging.

## Suppl. Figure 4



**Suppl. Figure 4. Ergidina binding to ischemic rat heart.** Two representative images from section obtained from ischemic heart incubated with Ergidina, followed by FITC-labeled anti-human IgG. Nuclei were counterstained with DAPI and tissue was evidenced by orange auto-fluorescence. Scale bar: 100 $\mu$ m.