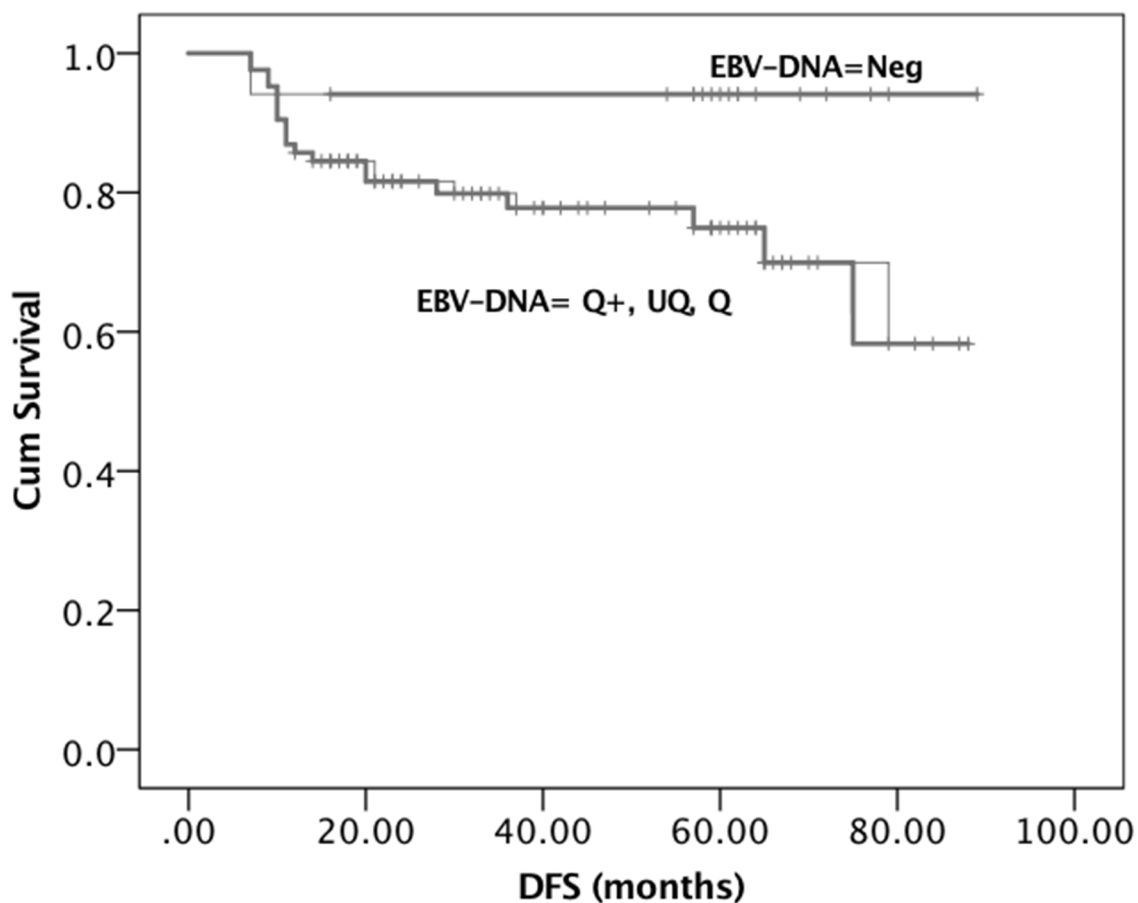
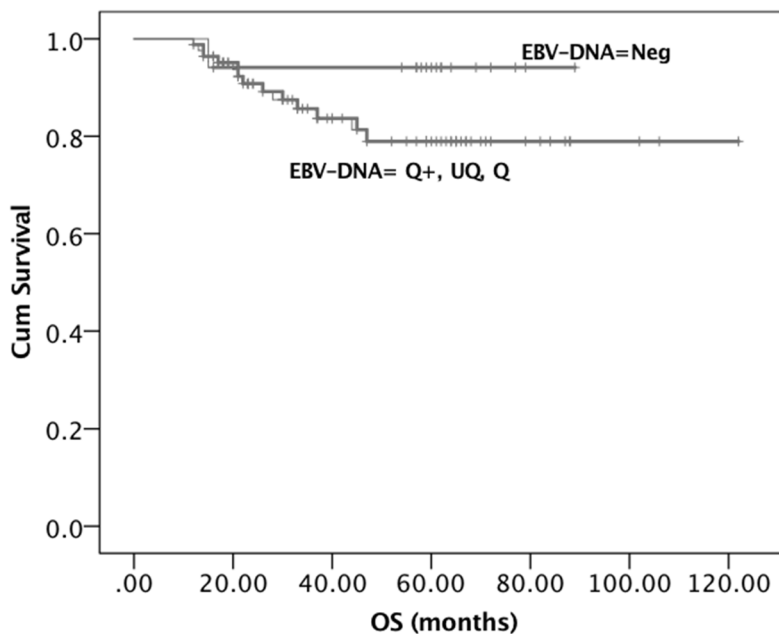


Circulating pre-treatment Epstein-Barr virus DNA as prognostic factor in locally-advanced nasopharyngeal cancer in a non-endemic area

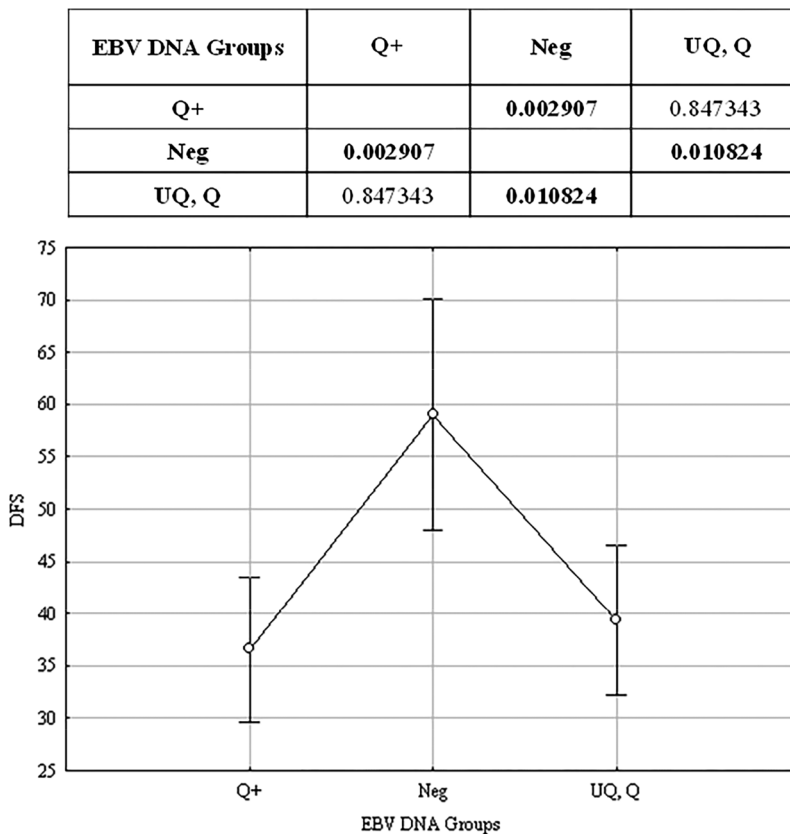
SUPPLEMENTARY FIGURES



Supplementary Figure 1: Kaplan-Meier survival curves showing the probability of DFS in locally advanced EBV positive NPC patients, post-hoc analysis. DFS= Disease Free Survival. EBV DNA was stratified into 4 groups: Neg, Negative (EBV DNA = 0); UQ, Positive but UnQuantifiable ($0 < \text{EBV DNA} < 10^2$ copies/mL); Q, Positive and quantifiable ($10^2 \leq \text{EBV DNA} \leq 15 \times 10^2$ copies/mL); Q+, Strongly positive and quantifiable ($\text{EBV DNA} > 15 \times 10^2$ copies/mL).



Supplementary Figure 2: Kaplan-Meier survival curves showing the probability of OS in locally advanced EBER positive NPC patients, post-hoc analysis. OS= Overall Survival. EBV DNA was stratified into 4 groups: Neg, Negative (EBV DNA = 0); UQ, Positive but UnQuantifiable ($0 < \text{EBV DNA} < 10^2$ copies/mL); Q, Positive and quantifiable ($10^2 \leq \text{EBV DNA} \leq 15 \times 10^2$ copies/mL); Q+, Strongly positive and quantifiable ($\text{EBV DNA} > 15 \times 10^2$ copies/mL).



Supplementary Figure 3: Results of Tukey HSD test, post-hoc analysis. EBV DNA was stratified into 4 groups: Neg, Negative (EBV DNA = 0); UQ, Positive but UnQuantifiable ($0 < \text{EBV DNA} < 10^2$ copies/mL); Q, Positive and quantifiable ($10^2 \leq \text{EBV DNA} \leq 15 \times 10^2$ copies/mL); Q+, Strongly positive and quantifiable ($\text{EBV DNA} > 15 \times 10^2$ copies/mL). The upper panel shows the results of the Tukey’s HSD test: *P* values corresponding to the difference between group pairs are displayed. Highlighted values are statistically significant ($P < 0.05$). The lower panel shows the median values of the three groups and their confidence intervals.