

See discussions, stats, and author profiles for this publication at: <https://www.researchgate.net/publication/324331246>

# Quantifying the conservation value of Sacred Natural Sites

Article in *Biological Conservation* · April 2018

DOI: 10.1016/j.biocon.2018.03.035

CITATIONS

8

READS

873

21 authors, including:



**Dimitrios N Avtzis**

Hellenic Agricultural Organization - Demeter

103 PUBLICATIONS 572 CITATIONS

SEE PROFILE



**Kalliopi Stara**

University of Ioannina

98 PUBLICATIONS 148 CITATIONS

SEE PROFILE



**Vasiliki Sgardeli**

Hellenic Center for Marine Research, Agios Kosmas, Greece

10 PUBLICATIONS 96 CITATIONS

SEE PROFILE



**S. Diamandis**

Hellenic Agricultural Organization - Demeter

86 PUBLICATIONS 1,093 CITATIONS

SEE PROFILE

Some of the authors of this publication are also working on these related projects:



CEFN-Conwy [View project](#)



Chestnut infesting insects of Greece [View project](#)

# Quantifying the conservation value of Sacred Natural Sites

Avtzis DN<sup>1</sup>, Stara K<sup>2</sup>, Sgardeli V<sup>3</sup>, Betsis A<sup>4</sup>, Diamandis S<sup>1</sup>, Healey JR<sup>5</sup>, Kapsalis E<sup>6</sup>, Kati V<sup>2,6</sup>, Korakis G<sup>7</sup>, Marini Govigli V<sup>2,8</sup>, Monokrousos N<sup>2,9</sup>, Muggia L<sup>10</sup>, Nitsiakos V<sup>11</sup>, Papadatou E<sup>12</sup>, Papaioannou H<sup>6</sup>, Rohrer A<sup>13</sup>, Tsiakiris R<sup>14</sup>, van Houtan KS<sup>15,16</sup>, Vokou D<sup>17</sup>, Wong J<sup>18</sup>, Halley, JM<sup>2\*</sup>

<sup>1</sup> Forest Research Institute, Hellenic Agricultural Organization Demeter, 57006 Vassilika, Thessaloniki, Greece

<sup>2</sup> Department of Biological Applications and Technology, University of Ioannina, 45110 Ioannina, Greece

<sup>3</sup> Institute of Marine Biological Resources and Inland Waters (IMBRIW), Hellenic Centre for Marine Research, Elliniko, P.C. 16604, Agios Kosmas, Attiki, Greece

<sup>4</sup> Dodonis 13, 45221, Ioannina, Greece

<sup>5</sup> School of Environment, Natural Resources and Geography, Bangor University, Bangor, Gwynedd, LL57 2UW, UK

<sup>6</sup> Department of Environmental & Natural Resources Management, University of Patras, 30100 Agrinio, Greece

<sup>7</sup> Department of Forestry and Management of the Environment and Natural Resources, Democritus University of Thrace, 68200, Orestiada, Greece

<sup>8</sup> European Forest Institute - Mediterranean Regional Office (EFIMED), St. Pau Art Nouveau Site – St. Leopold Pavilion, St. Antoni Maria Claret 167, 08025 Barcelona, Spain

<sup>9</sup> Institute of Soil and Water Resources, Hellenic Agricultural Organization Demeter, 14123 Athens, Greece

<sup>10</sup> Institute of Life Sciences, University of Trieste, via Giorgieri 10, 34127 Trieste, Italy

<sup>11</sup> University of Ioannina, Department of History and Archeology, Section of Folklore University campus 45110 Ioannina

<sup>12</sup> Vernardou 14, 15235 Athens, Greece

<sup>13</sup> Karl-Franzens University of Graz, Institute of Plant Science, Holteigasse 6, 8010 Graz, Austria

<sup>14</sup> Department of Forest Administration and Management, Forestry Service of Ioannina, Marikas Kotopouli 62, 45445, Ioannina, Greece

<sup>15</sup> Monterey Bay Aquarium, 886 Cannery Row, Monterey, CA 93940, United States

<sup>16</sup> Nicholas School of the Environment, Duke University, Durham, North Carolina 27708, United States

<sup>17</sup> Department of Ecology, School of Biology, Aristotle University of Thessaloniki, 54124 Thessaloniki, Greece

<sup>18</sup> Wild Resources Ltd. Ynys Uchaf, Mynydd Llandygai, Bangor, Gwynedd LL57 4BZ, UK

\*Correspondence jhalley@cc.uoi.gr, Telephone: +30-26510-07337

37 **Abstract**

38 Many have asserted that Sacred Natural Sites (SNS) play an important role in nature  
39 protection but few have assessed their conservation effectiveness for different taxa. We  
40 studied sacred groves in Epirus, NW Greece, where a large number of such SNS have been  
41 identified. Based on historical, ethnographic and ecological criteria, we selected eight of  
42 these groves and matching control sites and in them we studied fungi, lichens, herbaceous  
43 plants, woody plants, nematodes, insects, bats and passerine birds. Our results reveal that the  
44 contribution of SNS to species conservation is nuanced by taxon, vegetation type and  
45 management history. We found that the sacred groves have a small conservation advantage  
46 over the corresponding control sites. More specifically, there are more distinct sets of  
47 organisms among sacred groves than among control sites, and overall biodiversity, diversity  
48 per taxonomic group, and numbers of species from the European SCI list (Species of  
49 Community Interest) are all marginally higher in them. Conservationists regard the often  
50 small size of SNS as a factor limiting their conservation value. The sizes of SNS around the  
51 globe vary greatly, from a few square meters to millions of hectares. Given that those  
52 surveyed by us (ranging from 5 to 116 ha) are at the lower end of this spectrum, the small  
53 conservation advantage that we testified becomes important. Our results provide clear  
54 evidence that even small-size SNS have considerable conservation relevance; they would  
55 contribute most to species conservation if incorporated in networks.

56

57 **Keywords**

58 Sacred Natural Sites; Conservation value; Biodiversity; Extinction Debt; Beta diversity

59

60 **Research highlights**

- 61 ➤ Sacred Natural Sites (SNS) are thought to play an important role in conservation but  
62 quantitative analyses are rare.
- 63 ➤ We studied the conservation capacity of SNS at multiple sites for multiple taxonomic  
64 groups.
- 65 ➤ The SNS studied deliver a small but important conservation benefit compared with  
66 corresponding control areas.
- 67 ➤ The contribution of SNS to species conservation is nuanced by taxon, vegetation type and  
68 management history.
- 69 ➤ The best conservation strategy for small SNS is to join them as parts of networks within  
70 conventional conservation schemes.

71 **Abbreviations**

72 Sacred Natural Sites: SNS

73 Species Abundance Relationships: SAR

74 **1. Introduction**

75 Conservation is closely aligned with modern ecological thinking and over the last two  
76 centuries has become a major factor in policy decisions (Klein et al., 2009; Keppel et al.,  
77 2015). Before the arrival of the modern ecology-motivated concept, conservation has been  
78 practiced for many centuries in a variety of more traditional, community-based forms  
79 (Malhotra et al., 2007). One such form was through social taboos and religious beliefs that  
80 prescribed management regimes in sacred areas, often imposing limitations on certain  
81 activities, so as to secure important resources and services for the whole community (Berkes  
82 et al., 2000; Colding et al., 2001, Klepeis et al. 2016). These are the so-called sacred natural  
83 sites (SNS) that not only reflect the religious and social needs of the community but at the  
84 same time contribute important ecosystem services, from inspiration to air regulation, water  
85 and micro-climate quality, or conservation of biological diversity (Jim, 2003; Soury et al.,  
86 2007; Yuan and Liu, 2009; Wassie et al., 2010).

87 Sacred natural sites have been found in all inhabited continents (Hughes and Chandran, 1998)  
88 and woodland sacred groves can be traced back to the time when human society was still in a  
89 pre-agricultural state (Gadgil and Vartak, 1976). They have been associated with a wide  
90 range of faiths and beliefs, socio-cultural systems, institutions and ritual practices, and may  
91 be subject to changing conditions (Verschuuren et al., 2010). Around the Mediterranean  
92 basin, forests have long been recognized as a resource with a multifunctional role that needs  
93 particular care and protection. Groves or specific tree species, related mainly to sacrifice and  
94 burial, were considered as sacred and thus gained a special protection status (Blondel and  
95 Aronson, 1999). This was normally achieved through restrictions imposed by a local  
96 authority, usually a religious authority, threatening transgressors with supernatural  
97 consequences (Byers et al., 2001; Virtanen, 2002). At the same time, extended sacred forests  
98 served as a protective levee for the local community against natural disasters, such as  
99 landslides and floods (Stara et al., 2016). Sacred groves had flourished in Greece, since the  
100 Ottoman period, mainly in the mountainous regions, where the above-mentioned natural  
101 threats to local communities were much more severe and where historical circumstances  
102 allowed the involvement of the Church in their management.

103 Epirus is a mountainous region in northwestern Greece, in which sacred groves are a  
104 prominent component of the landscape; they form habitats dominated by mature trees that are  
105 unique within the historically intensively used landscapes (Stara et al., 2015; Stara et al.,

106 2016). These groves were established through a range of ritual praxes. Some were dedicated  
107 to specific saints, some were little more than community agreements, while others were  
108 protected by the threat of excommunication. Different management regimes prevailed  
109 through time with some groves being strictly protected, some subjected to controlled  
110 management, whereas for others only the protection of mature trees is reported. The groves  
111 appear either in the form of protective forests above or close to villages or as groups of  
112 veteran trees that accompany outlying churches or icon stands (Stewart, 1993; Nixon, 2006;  
113 See also Appendix G). Nonetheless, they served in many cases as multifunctional forests for  
114 local communities providing among others shaded grazing areas for livestock. Especially in  
115 deciduous sacred forests, grazing could be intensive (Papanastasis et al., 2008).

116 Different cultural groups coexisted in Epirus contributing to the variability of the landscape,  
117 but they were all associated with sacred groves. Long-term ethnographic research has  
118 revealed that of the 80 villages in the mountainous municipalities of Zagori and Konitsa  
119 almost all had at least one sacred grove; these groves mostly lie within a narrow range of  
120 elevation, typically from 800 to 1200 m (Stara et al., 2016). This is also the zone where most  
121 mountain settlements, characterized by a mixed system of agriculture-animal husbandry, have  
122 developed historically (Nitsiakos, 2016).

123 Even though the role of SNS in the conservation of biodiversity has long been recognized  
124 (Kosambi, 1962; Gadgil and Vartak, 1976; Haridasan and Rao, 1985), they have recently  
125 gained more attention amongst conservation biologists because of the many threats to  
126 biodiversity due to anthropogenic activities (Pimm et al., 1995; Gao et al., 2013). It has been  
127 suggested that incorporating these SNS into existing protected area networks might increase  
128 their effectiveness in achieving conservation objectives (Bhagwat and Rutte, 2006; Soury et  
129 al., 2007; Corrigan et al., 2013; Ormsby, 2013).

130 Despite the increasing interest in SNS as biodiversity refugia (Dudley et al., 2009), few  
131 studies have assessed their effectiveness across taxa, whilst most have focused on specific  
132 groups of organisms, such as plants (Boraiah et al., 2003; Khumbongmayum et al., 2006;  
133 Frascaroli et al., 2016), small mammals (Decher, 1997; Reed and Carol, 2004) or butterflies  
134 (Nganso et al., 2012). Most of these studies have been carried out in Asia, particularly India  
135 and China (Nganso et al., 2012; Gao et al., 2013; Karthikeyan and Dhamatharan, 2015), or  
136 Africa (Daye and Healey, 2015), with very little work in Europe (e.g. Frascaroli et al., 2016).  
137 It could be argued that, as most SNS tend to be small, their relevance to conservation, though

138 tangible, is limited compared to large reserves (Bossart et al 2006, Aerts et al 2006). Area is  
139 expected to affect the conservation effectiveness of SNS in several important ways. Firstly,  
140 the species-area relationship indicates that smaller areas cannot support as many species as  
141 larger ones. If a habitat shrinks, the level of biodiversity that it can sustain in the long term  
142 also shrinks, but, in the short term, the habitat retains more species than it can support. This  
143 surplus is called “extinction debt” (Diamond, 1972) and it must eventually be paid. The  
144 process takes time, with the magnitude of the delay being greater in larger fragments (Halley  
145 et al., 2016). Both the extinction debt and the time to the new equilibrium are also affected by  
146 the degree of isolation and the habitability of the “matrix” (i.e. the area between fragments;  
147 Koh and Ghazoul, 2010).

148 Focusing on a group of sacred groves in Epirus, the goal of this study is to investigate the  
149 conservation effectiveness of SNS. We do this by assessing their biodiversity and comparing  
150 them with matched control sites. For each sacred grove, a nearby woodland area without any  
151 sacred status but with similar characteristics was chosen to serve as a control site. To achieve  
152 a substantial breadth of studied organisms, eight different taxonomic groups were  
153 investigated simultaneously. Estimates of diversity were assessed per taxonomic group and  
154 per site. The importance of the size of the groves was also explicitly considered. In addition,  
155 extensive ethnographic research highlighted the impact of different management practices on  
156 the conservation status of these groves. The specific hypotheses that we are testing are as  
157 follows: (I) sacred groves have a higher alpha-diversity than their control sites because they  
158 enjoyed greater protection; (II) alpha-diversity differences will be accentuated for taxa, such  
159 as fungi or lichens, that benefit from the presence of trees of great age; and (III) sacred groves  
160 have higher beta-diversity than their control sites, since each sacred grove is expected to have  
161 its own distinctive land-use history (and therefore forest structure).

## 162 **2. Materials and Methods**

### 163 **2.1. Study Areas and Sampling**

164 Numerous sacred groves have been identified in a wide area of north-western Greece (Fig. 1),  
165 of which 22 were mapped. Of these, eight (1S-8S) were selected for the current study, based  
166 on an integrated set of historical, ethnographic, management and ecological criteria  
167 (Appendices A and G). Each of the selected sacred groves is situated in the mountainous  
168 region of Zagori and Konitsa (Fig. 1). Since our main hypotheses are that sacred-grove status  
169 involves higher biodiversity, for each grove we chose a single non-sacred site attempting an

170 assessment of biodiversity differences as practiced in other similar studies (Wortley et al.  
171 2013, Derhé et al. 2016). We selected control sites (1C-8C) in close proximity; these  
172 matched each sacred grove in terms of substrate, topographic position and type of vegetation.  
173 In this study, we identified three types of groves in terms of vegetation: those dominated by  
174 (i) coniferous, (ii) evergreen broadleaved or (iii) deciduous broadleaved trees. We sampled in  
175 these eight pairs of sites over two consecutive years (2013 and 2014) following a sampling  
176 protocol that was adapted to the unique characteristics of each taxonomic group (Appendix  
177 B). The sampling effort was the same across all sites for any given taxonomic group, so that  
178 estimates of biodiversity are comparable.

## 179 **2.2. Dataset**

180 In total, eight taxonomic groups (fungi, lichens, herbaceous plants, woody plants, nematodes,  
181 insects, bats and passerine birds) were sampled in each sacred grove and the corresponding  
182 control site. All observed organisms of these groups were identified to species level, except  
183 for nematodes, which were identified to genus level. The data consist of abundance records  
184 per species, except for lichens, herbaceous plants (including ferns) and woody plants, for  
185 which only species presence was recorded.

## 186 **2.3. Biodiversity analysis**

187 The biodiversity we assess here is the total number of species recorded in each site, which we  
188 call the *species richness* of the site.

### 189 **2.3.1. Ordination**

190 To visualize the difference in composition between sites, multidimensional scaling analysis  
191 based on Bray-Curtis dissimilarity was conducted for each taxon, separately, and for all taxa  
192 combined. This index is widely used as a measure of multidimensional “distance” between  
193 samples for abundance data (e.g. Clarke et al., 2007; Birtel et al., 2015; Nicol et al., 2017); it  
194 has the advantage, over some other ordination techniques, that differences in abundance are  
195 scaled proportionally . The analysis was implemented in R 3.2.3 (R Core Team, 2015) using  
196 function *isoMDS* of the MASS package (Venables and Ripley, 2002) and function *vegdist* of  
197 the VEGAN package (Oksanen et al., 2016).

### 198 **2.3.2. Species richness**

199 Sacred groves and control sites were compared in terms of their species richness per site  
200 (across all taxa), total species richness per taxon (across all sacred and all control sites) and  
201 species richness per site per taxon.

202 Apart from their *type* (sacred or control), sites are characterized by their *location* within the  
203 region of Epirus (Fig. 1), their *vegetation* (three forest types) and the *area* of the site (being  
204 the area of the convex hull containing the sample plots within each site) (Table 1).

205 To investigate the effect of the different site characteristics on species richness, a generalized  
206 linear regression model  $S \sim area + type + vegetation\ type + area:type$  with Poisson response  
207 and a logarithmic link function was used. The model is applied to the total species richness  
208 per site and to the species richness of each taxonomic group per site. In addition, we carried  
209 out a number of tests (regression and paired *t*-test) comparing species richness in sacred sites  
210 and control areas with and without conifer groves.

211 We also recorded the numbers of European SCI, Species of Community Interest (Official  
212 Journal of the European Union, 2009; Council Directive, 1992), for all sacred groves and  
213 corresponding control sites (Table E.1). We assessed the significance of the differences  
214 between them using a paired Students *t*-test.

### 215 **2.3.3. Beta diversity**

216 Apart from the species richness per site (alpha diversity) and the species richness across sites  
217 (gamma diversity), the sacred and control site communities were compared in terms of their  
218 beta diversity or species turnover (Magurran, 2004). Beta diversity between the local scale  
219 (sites) and the global scale (union of sites) was measured using Whittaker index and  $N^*$  index  
220 (Lazarina et al., 2013). Both indices give a measure of species turnover in space, which in  
221 this case measures the difference in species composition between the local scale (site) and  
222 global scale (the union of all sacred or all control sites).  $N^*$  is roughly defined as the  
223 sampling effort (number of samples) above which the samples accumulated will mostly  
224 contain species that have already been found. The advantage of the  $N^*$  index, as opposed to  
225 other indices, is that it is independent of the sampling effort, provided that there are enough  
226 samples for the index to be calculated (Lazarina et al 2013). The  $N^*$  index was computed  
227 using the R function provided by Lazarina et al (2013). We tested the significance of  
228 differences between sacred groves and control sites at the 5% level.

229 All statistical tests and analyses were performed in R 3.2.3 (R Core Team, 2015).



#### 230 2.3.4. Conservation capacity of SNS

231 By the term “conservation capacity” we refer to the ability of a protected area to conserve  
232 biodiversity, assuming that management measures to protect the site are implemented.  
233 Conservation capacity involves two components: the number of species that an area of a  
234 given size can support at equilibrium, based on the species-area relationship (SAR, see for  
235 example Halley et al., 2013), and the duration for which the area can retain species (if fully  
236 protected). This is based on an estimation of the species relaxation curve for extinction debt  
237 (Halley et al., 2016), a prominent factor in extinction ecology and conservation (Newmark et  
238 al., 2017). Extinction debt becomes important when a fragment of habitat within a larger  
239 habitat network connected by dispersal gets isolated, with no further dispersal possible.  
240 Thereafter, the viability of each species is dependent on its population size within the  
241 fragment so that current species richness may be a relic of earlier biodiversity levels rather  
242 than true conservation capacity. The conservation capacity of the sacred groves was  
243 estimated for each taxonomic group, separately, using the Arrhenius SAR:

244

$$S = cA^z \quad \dots(1)$$

245 The constant  $z$  is typically between 0.2 and 0.3 for islands, while for continental areas it falls  
246 within the range of 0.1 to 0.15 (Halley et al., 2013). Calibration of the SAR was achieved by  
247 assuming a continental area with exponent 0.15; then  $c$  was determined by using the number  
248 of species found in the control sites through the formula  $c = S/A^z$ .

249 The first time-constant of relaxation is the expected time for half the extinction debt to be  
250 paid off, which actually is the half-life of extinction debt in a habitat remnant. In the absence  
251 of speciation and colonization, the half-life of extinction debt is equal to the time for species  
252 richness to fall to half its original value. Based on the models developed in Halley et al.  
253 (2016), this is approximately (in years):

254

$$t_{50} \approx 2.77 \left( \frac{\rho A}{S_0} \right)^\alpha \tau \quad \dots(2)$$

255 Here,  $A$  is the area of the remnant forest,  $\rho$  is the typical total density of individuals of the  
256 relevant taxonomic group,  $\tau$  is the average generation time and  $S_0$  is the initial number of  
257 species in the area  $A$  at the time of area reduction or isolation. The factor  $\rho A/S_0$  is important,  
258 being the number of individuals per species. If the initial number of species,  $S_0$ , is not known,  
259 the alternative is to use the SAR and substitute Eq. (1) for species number:

260 
$$t_{50} = 2.77 \left( \frac{\rho A^{1-z}}{c} \right)^\alpha \tau \quad \dots (3)$$

261 In order to get  $\rho$  and  $\tau$ , we assume a single average for each taxonomic group (Halley et al.,  
 262 2016). For passerine birds, herbaceous and woody plants,  $\rho$  and  $\tau$  values are as in Halley et  
 263 al. (2016). For nematodes, our measurements indicated typical densities of  $7.5 \times 10^9$   
 264 individuals per ha and we used a generation time of 19 days (Lee, 2002), while for bats we  
 265 used  $\rho=0.105$  individuals per ha and for the generation time we used  $\tau=8$  years, which is half  
 266 the average longevity (Austad and Fischer, 1991). For insects, the value of  $\tau=1$  year was  
 267 typical of the species in our study, while  $\rho=7.83 \times 10^4$  individuals per ha that we used is  
 268 clearly a conservative number as it refers to ground-dwelling beetles (Didham et al., 1998).  
 269 We did not compute curves for lichens or fungi owing to known complications of defining  
 270 individuals and generation times for these groups.

271 **2.3.5. SNS and National Parks (NP) size worldwide**

272 To see how the size of the sacred groves that we studied fits into the global picture, using a  
 273 literature search, we assembled a database of SNS from various countries, for which we could  
 274 find the area (Table F.1) as well of National Parks in three countries: Greece, the United  
 275 Kingdom and the United States (Table F.2).

276 **3. Results**

277 In total, across all taxonomic groups studied, 816 species were observed and identified within  
 278 the eight pairs of sacred groves and control sites (Table C.1). There was great variability in  
 279 the species richness of the sacred sites relative to their respective control sites for different  
 280 taxonomic groups: in five of them, the total number of species observed was higher in the  
 281 sacred groves, and in three groups, it was higher in the control sites (Fig. 2a), but these  
 282 differences were not statistically significant except for fungi ( $p=0.001$ , see Table C.2), for  
 283 which richness was higher in sacred groves. Combining species across the taxonomic groups,  
 284 all except two localities had higher species richness in the sacred grove than the  
 285 corresponding control site (Fig. 2b). The two exceptions are localities 4 and 7 (Fig. 1) that are  
 286 associated with steeper slopes and are dominated by conifers. The other six pairs are  
 287 associated with the lowland or southern-aspect slopes and are dominated by broadleaved  
 288 trees. There is a strong correlation (Fig. 2b) between the species richness of the sacred groves  
 289 ( $x$ ) and control sites ( $y$ ) in each locality for the six pairs dominated by broadleaved trees,

290 reflecting the success of their matching in the sample design ( $y=0.727x+30.56$ ,  $R^2=0.912$ ,  
291  $p=0.003$ ). For these localities, there is also a significant difference between overall species  
292 richness in the sacred groves and control sites ( $t$ -test,  $p=0.0085$ ). These tests show a  
293 consistent trend for greater overall species richness in the sacred groves than the control sites.

294 Ordination shows that the patterns of species composition amongst the three vegetation types  
295 (Fig. D.1) varied by taxonomic group. However, with species of all groups combined, there  
296 was a clear distinction between the vegetation types. Regarding the site type, there were no  
297 consistent differences in composition between sacred groves and control sites for the  
298 individual groups of species or for all species combined (Figs D.1 and D.2). The generalized  
299 linear regression analysis shows (Table C.2) that the site area and type do not affect  
300 significantly the total species richness per site (at a 5% significance level). However, their  
301 interaction is significant meaning that the relationship between species richness and area  
302 differs depending on the type of the site (sacred or control). As sacred sites are mostly  
303 smaller in area than control sites (Table 1). The total species richness is also significantly  
304 affected by vegetation type. On a taxonomic group level, the locality is not significant for any  
305 group. The type of the site (sacred or control) is significant only for fungi, whereas vegetation  
306 type is significant for lichens, herbaceous plants, and woody plants; none of these predictors  
307 is significant for nematodes, insects, passerine birds or bats. The interaction between site  
308 locality and type is also significant for herbaceous plants and lichens, as was also the case for  
309 total species richness.

310 Of the 13 European SCI species that were encountered in the study area, more were found in  
311 the sacred groves (eleven) than in their control sites (nine) especially for passerine birds (8  
312 versus 4). However, overall the difference was not significant (paired  $t$ -test;  $p=0.30$ ).

313 The Whittaker and  $N^*$  indices of species turnover reveal significantly greater beta diversity  
314 amongst the sacred groves than amongst the control sites (at the 5% level for both indices)  
315 (Fig. 3). More specifically, beta diversity is greater in the sacred groves for five taxonomic  
316 groups (lichens, herbaceous plants, woody plants, passerine birds and bats); it is slightly less  
317 for insects, and very similar between the two site types for nematodes and fungi. Notably,  
318 beta diversity is much lower for the nematodes than for all the other taxonomic groups of  
319 species, presumably because nematodes were identified only to genus level and, hence, the  
320 majority of nematode genera are found in all samples.

321 The area of the sacred groves was small, ranging from 4.9 ha to 115.7 ha with a median size  
322 of 18.4 ha. Both the area and the taxonomic group are expected to affect the half-life of  
323 species loss following habitat isolation (Fig. 4a) and, hence, their conservation capacity. The  
324 predicted half-life varied greatly amongst taxonomic groups being low for bats and passerine  
325 birds, under 100 years for most of the sacred groves, but very high, above 1000 years, for  
326 nematodes and herbaceous plants (because of their large populations) and for woody plants  
327 (because of large generation times)). However, the general linear modelling analysis did not  
328 find a significant relationship between area and species richness.

329 In our literature search, we found 104 SNS for which the area was recorded or could easily be  
330 inferred; these occur in all inhabited continents. To these we added the 22 sacred groves in  
331 Epirus that we mapped, including the 8 whose biodiversity we studied in detail. The  
332 histogram for this ensemble (Fig 4a) shows that the size of SNS varies greatly, ranging from  
333 a few square metres to over 100,000 km<sup>2</sup>, with the groves that we studied falling in the  
334 smaller part of the range. By contrast, National Parks are always at least 10 km<sup>2</sup> (Fig. 4b).

335

#### 336 **4. Discussion**

337 Globally, this is the first study to evaluate the conservation capacity of SNS by use of a large  
338 and taxonomically broad set of species. Regarding Hypothesis (I), our study shows that while  
339 sacred groves contained more species overall, the difference between them and control sites  
340 was not statistically significant unless the north-facing conifer sites were omitted from the  
341 analysis. Similar statistical issues have arisen in a previous study comparing protected and  
342 unprotected areas for several taxonomic groups (Gray et al., 2016), despite the expected  
343 differences between such areas. These results suggest that the advantage of protected over  
344 unprotected areas becomes blurred when more than one taxonomic group is examined  
345 (Khumbongmayum et al., 2005; Gao et al., 2013). To avoid the bias of masking differences  
346 when pooling together data from different taxonomic groups, in the present study,  
347 biodiversity was assessed for each group separately. While species richness was higher for  
348 most groups in sacred groves, only for fungi was this difference significant. This lends  
349 support to Hypothesis (II), except that for lichens, the other taxon that should benefit from the  
350 presence of older trees, the differences were not significant. For plants, this lack of strong  
351 distinction contrasts with an earlier study (Frascaroli et al., 2016) reporting significantly more  
352 species in sacred groves than in reference sites. In contrast to the nuanced difference in

353 species richness between sacred groves and control sites, there was a clear biodiversity  
354 benefit when beta diversity was considered (Hypothesis III). Its higher value for sacred  
355 groves suggests that there is a greater distinction (in the sets of species) between sacred  
356 groves than between control sites. This might be explained by the groves different histories of  
357 usage, which have a significant effect on sacred grove's vegetation structure and therefore on  
358 the ecological community structure, thus increasing the dissimilarities between groves.  
359 Different patterns of land abandonment could also play a role. By contrast, the ~~non-sacred~~  
360 control areas arose largely through natural regeneration in the last 100 years and thus have a  
361 more uniform structure.

362 Given the lack of evidence of a strong difference in species richness or composition between  
363 sacred groves and control sites, other factors were explored to explain the results found. The  
364 most obvious candidate was vegetation type, as the eight pairs of sites were stratified between  
365 topographic locations, with three different vegetation types being distinguished, dominated  
366 by coniferous, evergreen broadleaved or deciduous broadleaved trees. In all of the analyses,  
367 and for many of the species groups examined separately, a clear distinction was found in  
368 species richness and composition between the six site pairs dominated by broadleaved trees  
369 (with either similar overall richness between the site types or higher richness in the sacred  
370 groves) in contrast to the two site pairs with conifer-dominated vegetation (where control  
371 sites had higher richness). Other than the nature of coniferous forests *per se*, a number of  
372 features might also contribute to the distinct biodiversity pattern in these two site pairs.  
373 Firstly, these two groves and their control sites are in closer proximity to the nearest village  
374 than is the case for the other sites. This could have led to more intense anthropogenic  
375 influence or, alternatively, it might have increased the effectiveness of the protection  
376 associated with religious prohibitions (Frosch et al., 2016). Secondly, they are located on  
377 very steep slopes, so these groves would require strict protection to fulfil the role of erosion  
378 or landslide control. Looking closely at each sacred grove, it becomes apparent that its current  
379 status has been individually shaped by its history. For example, despite a long history of  
380 protection, one of the conifer groves is the forest of Konitsa (4S) was heavily logged for  
381 timber and fuel wood in the 1940s, during the Second World War and the following Greek  
382 Civil War. Subsequently, in 1953, the municipality decided to manage the forest by removing  
383 mature trees in an effort to raise funds for enforcing its protection, particularly of its most  
384 degraded parts. Our review of the management history of the eight sacred groves also reveals  
385 site-specific variation in the enforcement of restrictions on tree cutting or livestock grazing,

386 which are likely to have influenced considerably the habitat properties and, hence,  
387 conservation capacity.

388 Land abandonment is another driving force in the evolution of the landscapes of this area. In  
389 the postwar period, as agriculture in Western Europe entered a productivity-orientated phase,  
390 agricultural change in the study area coincided with decline of agricultural activity or simply  
391 of its abandonment. Crop fields disappeared and grasslands gradually developed into  
392 shrublands and forests due to a decrease in animal grazing and subsequent natural succession.  
393 An exception to that is Konitsa, where the surrounding fertile lowlands remain agricultural to  
394 this day (Zomeni et al., 2008). This homogenization of the landscape may explain the  
395 differences between sacred and control sites being only marginal. Photos from 1945 and 2007  
396 (Fig. H.1) reveal a changing forest landscape with the forest areas around the groves most  
397 often expanding. Thus, a possible hypothesis is that the sacred groves acted as nuclei of  
398 expansion and dispersal of biodiversity into newly regenerated forest areas.

399 Because sacred groves along the mountainsides of Epirus were established for their benefits  
400 in terms of cultural and religious beliefs, hill-slope protection, recreation or even scenery  
401 (visual amenity), rather than for biodiversity conservation *per se*, they can be described as  
402 suffering from a kind of “rocks and ice syndrome” (Terborgh, 1999). Biodiversity  
403 conservation was not the priority in delimiting these areas; this has emerged as a secondary  
404 benefit. For that reason, the sites chosen for sacred status were not selected according to  
405 conservation criteria. This is especially the case with respect to their size. Size is a major  
406 factor limiting conservation capacity (Halpern, 2003; Ramesh et al., 2016), both with respect  
407 to the number of species that can be supported in the long-term and in the length of time an  
408 extinction debt can be sustained following isolation (Fig. 4). However, people establishing  
409 sacred groves might settle for much smaller areas than are necessary in conservation terms, as  
410 can be seen at a global scale in Fig 4.

411 No size dependence was observed for the diversity of sacred groves. This was initially  
412 surprising, given the expected dependence of species richness and relaxation time on area.  
413 However, as the actual sampling area (given any taxonomic group) is the same in each site  
414 we expect this to increase only weakly with site area (Phillips et al., 2017). Furthermore, we  
415 should not think of these groves as islands of forest in a landscape of cultivation. The groves  
416 have always existed in a matrix of habitable or partially-habitable landscape, so for this  
417 reason also, it is not so surprising that measurements of diversity fail to show the limiting

418 effect of size expected from Eq. 1. Finally, consistent with historical and photographic  
419 evidence, the area of groves is not constant. Most have expanded since 1945 while some were  
420 not isolated even in 1945. Also, the variability of areas is not so great (Fig 4a), so that area  
421 dependence is not easily detectable if statistical power is low. Thus, while Eqs (1-3), based on  
422 isolated fixed-area island models, can illuminate our understanding of conservation capacity  
423 and relaxation time, they must be used in conjunction with historical and landscape  
424 information when their basic assumptions are not met.

425 These results show a conservation benefit of SNS, which is variable amongst taxa and is  
426 affected by the type of grove and by management history. Other SNS in Epirus or elsewhere  
427 are likely to behave similarly, particularly if they are of similar size. Thus, in the wider  
428 context, if SNS are to play a role in modern conservation, these factors must be carefully  
429 assessed. Extension of the analyses reported here should prioritize a landscape-scale  
430 assessment of the relative fragmentation of the different sacred groves and control sites, and  
431 the extent to which this explains the variation in their species composition and diversity  
432 (Echeverría et al., 2007; Daye and Healey, 2015). A fuller knowledge of the historical context  
433 can help in this, especially regarding changes in management regime. The issue of vegetation  
434 type should be also addressed so as to clarify if it really plays an important role in  
435 conservation efficiency.

436 The sacred groves studied here are small in size and have been affected by changing degrees  
437 of protection and management throughout their history. Many of them could not function as a  
438 reserves or conservation areas by themselves. However, following another modern paradigm,  
439 that of the European Natura 2000 system (Official Journal of the European Union, 2011), a  
440 network of protected areas existing in an agricultural matrix (following the “countryside  
441 SAR” principle) (Pereira et al., 2014) offers an alternative approach. If SNS were  
442 incorporated into wider parks or networks, the small conservation advantage that we  
443 observed here could become more important. Moreover, a conservation network based  
444 around such areas might gain local recognition more readily than a park or network  
445 developed on a purely scientific basis. As a large proportion of SNS are small, this approach  
446 is likely to be important globally.

447

448

449

450 **Acknowledgements**

451 We would like to acknowledge the inspiration of the late Oliver Rackham. We also thank  
452 Stuart Pimm and Thanasis Kallimanis for discussions and helpful comments on the  
453 manuscript. This research was co-financed by the European Union (European Social Fund –  
454 ESF) and Greek national funds through the Operational Program Education and Lifelong  
455 Learning" of the National Strategic Reference Framework (NSRF) - Research Funding  
456 Program: THALIS. Investing in knowledge society through the European Social Fund.

457 **References**

- 458 Aerts, R., Van Overtveld, K., Haile, M., Hermy, M., Deckers, J. and Muys, B., 2006. Species  
459 composition and diversity of small Afromontane forest fragments in northern Ethiopia. *Plant*  
460 *Ecology*, 187, 127-142.
- 461 Austad, S.N., Fischer, K.E. 1991. Mammalian aging, metabolism, and ecology: evidence  
462 from the bats and marsupials. *J. Gerontol.* 46, 47–53.
- 463 Berkes, F., Colding, J., Folke, C., 2000. Rediscovery of traditional ecological knowledge as  
464 adaptive management. *Ecol. Appl.* 10, 1251-1262.
- 465 Bhagwat, S.A., Rutte, C., 2006. Sacred groves: Potential for biodiversity management. *Front*  
466 *Ecol. Environ.* 4, 519-524.
- 467 Birtel, J., Walser, J.-C., Pichon, S., Bürgmann, H., Matthews, B., 2015. Estimating bacterial  
468 diversity for ecological studies: methods, metrics and assumptions. *PLoS ONE* 10(4):  
469 e0125356. <https://doi.org/10.1371/journal.pone.0125356>.
- 470 Blondel, J., Aronson, J., 1999. *Biology and wildlife of the Mediterranean region*, Oxford  
471 University Press, Oxford, UK.
- 472 Bongers, T., 1994. *De nematoden van Nederland, Pirola: Schoorl, the Netherlands*.
- 473 Boraiah, K.T., Vasudeva, R., Bhagwat, S.A., Kushalappa, C.G., 2003. Do informally  
474 managed sacred groves have higher richness and regeneration of medicinal plants than state-  
475 managed reserve forests? *Curr. Sci.* 84, 804–808.
- 476 Bossart, J., Opuni-Frimpong, E., Kuudaar, S., Nkrumah, E., 2006. Complementarity of  
477 fruitfeeding butterfly species in relict sacred forests and forest reserves of Ghana. *Biodivers.*  
478 *Conserv.* 15, 333–359.
- 479 Byers, B.A., Cunliffe, R., Hudak, A.T., 2001. Linking the conservation of culture and nature:  
480 a case study of sacred forests in Zimbabwe. *J. Hum. Ecol.* 29, 187-218.
- 481 Caldas, A., Robbins, R.K., 2003. Modified Pollard transects for assessing tropical butterfly  
482 abundance and diversity. *Biol. Conserv.* 110, 211-219.
- 483 Clarke, K. R., P. J. Somerfield, Chapman, M.G., 2006. On resemblance measures for  
484 ecological studies, including taxonomic dissimilarities and a zero-adjusted Bray-Curtis  
485 coefficient for denuded assemblages. *J. Exp. Mar. Biol. Ecol.* 330:55–80.



- 486 Clauzade, G., Roux, C., 1985. Likenoj de Okcidenta Euro. Bull. Soc. Bot. Centre-Ouest 7,  
487 1-893.
- 488 Colding, J., Folke, C., 2001. Sacred taboos: 'invisible' systems of local resource management  
489 and biological conservation. *Ecol. Appl.* 11, 584–600.
- 490 Corrigan, C., Hay-Edie, T., 2013. A Toolkit to Support Conservation by Indigenous Peoples  
491 and Local Communities: Building Capacity and Sharing Knowledge for Indigenous Peoples'  
492 and Community Conserved Territories and Areas (ICCAS), UNEP-WCMC, Cambridge, UK.
- 493 Council Directive, 1992. Council Directive 92/43/EEC of 21 May 1992 on the Conservation  
494 of Natural Habitats and of Wild Fauna and Flora. (Available at:). [http://eur-lex.  
495 europa.eu/legal-content/EN/ALL/?uri=CELEX:01992L0043-20070101](http://eur-lex.europa.eu/legal-content/EN/ALL/?uri=CELEX:01992L0043-20070101).
- 496 Daye, D.D., Healey, J., 2015. Impacts of land-use change on sacred forests at the landscape  
497 scale. *Global Ecol. Conserv.* 3, 349-358.
- 498 Decher, J., 1997. Conservation, small mammals, and the future of sacred groves in West  
499 Africa. *Biodivers. Conserv.* 6, 1007-1026.
- 500 Derhé, M.A., Murphy, H., Monteith, G., Menéndez, R., 2016. Measuring the success of  
501 reforestation for restoring biodiversity and ecosystem functioning. *J. Appl. Ecol.* 53(6), 1714-  
502 1724.
- 503 Diamond, J.M., 1972. Biogeographic kinetics: estimation of relaxation times for avifaunas of  
504 southwest Pacific islands. *PNAS* 69, 3199–3203.
- 505 Didham, R.K., Hammond, P.M., Lawton, J.H., Eggleton, P., Stork, N.E., 1998. Beetle species  
506 responses to tropical forest fragmentation. *Ecol. Mon.* 68, 295-323.
- 507 Dudley, N., Higgins-Zogib, L., Mansourian, S., 2009. The links between protected areas,  
508 faiths, and sacred natural sites. *Conserv. Biol.* 23, 568-577.
- 509 Echeverría, C., Newton, A.C., Lara, A., 2007. Impacts of forest fragmentation on species  
510 composition and forest structure in the temperate landscape of southern Chile. *Glob. Ecol.  
511 Biogeogr.* 16, 426-439.
- 512 Frascaroli, F., 2013. Sacred sites for the conservation of biodiversity. PhD Thesis. University  
513 of Zurich, Zurich.
- 514 Frascaroli, F., Bhagwat, S., Guarino, R., Chiarucci, A., Schmid, B., 2016. Shrines in Central  
515 Italy conserve plant diversity and large trees. *Ambio* 45, 468-479.
- 516 Frosch, B., Holger, J., Mhamdi, A., Achhal El Kadmiri, A., Rudner, M., Deil, U., 2016.  
517 Sacred sites in north-western Morocco – naturalness of their vegetation and conservation  
518 value for vulnerable plant species. *Feddes. Repert.* 127, 83–103.
- 519 Gadgil, M., Vartak, V.D., 1976. Sacred groves of Western Ghats of India. *Econ. Bot.* 30,  
520 152–160.
- 521 Gao, H., Quyang, Z., Chen, S., van Koppen, C.S.A., 2013. Role of culturally protected forests  
522 in biodiversity conservation in Southeast China. *Biodiv. Conserv.* 22, 531-544.

- 523 Gray, C.L., Hill, S.L.L., Newbold, T., Hudson, L.N., Börger, L., Contu, S., Hoskins, A.J.,  
524 Ferier, S., Purvis, A., Schalamann, J.P.W., 2016. Local biodiversity is higher inside than  
525 outside terrestrial protected areas. *Nat. Commun.* 7, 12306.
- 526 Githitho, A.N., 2003. The sacred Mijikenda Kaya Forests of Coastal Kenya and biodiversity  
527 conservation. The importance of sacred natural sites for biodiversity conservation.  
528 Proceedings of the International Workshop held in Kuming and Xishuangbanna Biosphere  
529 Reserve, People's Republic of China. UNESCO, Paris, France.
- 530 Halley, J.M., Monokrousos, N., Mazaris, A.D., Newmark, W.D., Vokou, D., 2016. Dynamics  
531 of extinction debt across five taxonomic groups. *Nat. Commun.* 7:12283.
- 532 Halley, J.M., Sgardeli, V., Monokrousos, N., 2013. Species-area relationships and extinction  
533 forecasts. *Ann. N.Y. Acad. Sci.* 1286, 50-61.
- 534 Halpern, B.S., 2003. The impact of marine reserves: do reserves work and does reserve size  
535 matter. *Ecol. Appl.* 13, 117-137.
- 536 Haridasan, K., Rao, R.R., 1985. Forest flora of Meghalaya, Vol. 1. Bishen Singh and  
537 Mahendrapal Singh, Dehra Dun, Scientific Publishers.
- 538 Hughes, J.D., Chandran, M.D.S., 1998. Chapter 5: Sacred groves around the earth: An  
539 overview, in: Ramakrishnan, P.S., Saxena, K.G., Chandrashekhara, U.M. (Eds.), *Conserving  
540 the Sacred for Biodiversity Management*. Oxford & IBH, New Delhi and UNESCO, Paris.
- 541 Jim, C.Y., 2003. Conservation of soils in culturally protected woodlands in rural Hong Kong.  
542 *For. Ecol. Manage.* 175, 339–353.
- 543 Jones, K.E., Altringham, J.D., Deaton, R., 1996. Distribution and population densities of  
544 seven species of bat in northern England. *J. Zool.* 240, 788–798.
- 545 Junsongduang, A., Balslev, H., Inta, A., Jampeetong, A., Wangpakattanawong, P., 2013.  
546 Medicinal plants from swidden fallows and sacred forest of the Karen and the Lawa in  
547 Thailand. *J. Ethnobiol. Ethnomed.* 9, 1–10.
- 548 Karthikeyan, C., Dhamotharan, R., 2015. Density, species richness and diversity of Trees in a  
549 Sacred Grove-Tropical Dry Deciduous Forest, Dharmapuri District, Tamil Nadu, South India.  
550 *Scholars Acad. J. Biosci.* 3, 536-540.
- 551 Keppel, G., Mokany, K., Wardell-Johnson, G.W., Phillips, B.L., Welbergen, J.A., Reside,  
552 A.E., 2015. The capacity of refugia for conservation planning under climate change. *Front.  
553 Ecol. Environ.* 13:106–112.
- 554 Khumbongmayum, A.D., Khan, M.L., Tripathi, R.S., 2005. Survival and growth of seedlings  
555 of a few tree species in the four sacred groves of Manipur, Northeast India. *Curr. Sci.* 88,  
556 1781-1788.
- 557 Khumbongmayum, A.D., Khan, M.L., Tripathi, R.S., 2006. Biodiversity conservation in  
558 sacred groves of Manipur, northeast India: population structure and regeneration status of  
559 woody species. *Biodivers. Conserv.* 15, 2439–2456.

- 560 Klein, C.J., Wilson, K.A., Watts, M., Stein, J., Carwardine, J., Mackey, B., Possingham, H.P.,  
561 2009. Spatial conservation prioritization inclusive of wilderness quality: a case study of  
562 Australia's biodiversity. *Biol. Conserv.* 142, 1282–1290.
- 563 Klepeis, P., Orłowska, I.A., Kent, E.F., Cardelús, C.L., Scull, P., Wassie Eshete, A., Woods,  
564 C., 2016. Ethiopian Church Forests: A Hybrid Model of Protection. *Hum. Ecol.* 44, 715-730.
- 565 Koh, L.P., Ghazoul, J., 2010. A matrix-calibrated species-area model for predicting  
566 biodiversity losses due to land-use change. *Conserv. Biol.* 24, 994–1001.
- 567 Kosambi, D.D., 1962. *Myth and Reality*. Popular Press, Bombay, India.
- 568 Kyriakidou-Nestoros, A., 1989 *Laografika meletimata (Folklore Studies)*. Hellenic Literary  
569 and Historical Archive, Athens. [in Greek]
- 570 Larsen, T.B., Adusei-Poku, K., Sáfián, S. 2009. The Butterflies of Boabeng-Fiema Monkey  
571 Sanctuary - Biodiversity and Extinction in a Forest Fragment in Ghana. *Afr. Entomol.* 17,  
572 131-146.
- 573 Lazarina, M., Sgardeli, V., Kallimanis, A.S., Sgardelis, S.P. 2013. An effort-based index of  
574 beta diversity. *Methods Ecol. Evol.* 4, 217-225.
- 575 Lee, D.L., 2002. *The biology of nematodes*. CRC Press.
- 576 Magurran, A.E., 2004. *Measuring biological diversity*. Blackwell, Oxford.
- 577 Mallarach, J.M., Papayannis, T., 2006. Protected areas and spirituality. Proceedings of the 1<sup>st</sup>  
578 Workshop of the Delos Initiative. IUCN and Nontserrat, Spain. *Publicacions de l'Abadia de*  
579 *Montserrat*.
- 580 Mallarach, J.M., Papayannis, T., 2010. Sacred natural sites in technologically developed  
581 countries: reflections from the experience of the Delos Initiative, in: Verschuuren, B., Wild,  
582 R., McNeeley, J., Oviedo, G. (Eds.), *Sacred Natural Sites: Conserving Nature and Culture*.  
583 Earthscan, London.
- 584 Malhotra, K.C., Gokhale, Y., Chatterjee, S., Srivastava, S., 2007. *Sacred Groves in India*.  
585 Aryan Books International, New Delhi, India.
- 586 Mihailaris, P.D., 2004. *Aforismos: I prosarmogi mias poinis stis anagkaiotites tis*  
587 *Tourkokratias (Excommunication: Adaptation of a punishment to the needs of the Ottoman*  
588 *Occupation)*, second ed. National Research Foundation- Center of Modern Greek Research,  
589 Athens. [in Greek]
- 590 Mishra, B.P., Tripathi, O.P., Tripathi, R.S., Pandey, H.N., 2004. Effects of anthropogenic  
591 disturbance on plant diversity and community structure of a sacred grove in Meghalaya,  
592 northeast India. *Biodivers. Conserv.* 13,421-436.
- 593 Nganso, B.T., Kyerematen, R., Obeng-Ofori, D., 2012) Diversity and abundance of butterfly  
594 in the Abiriw and Odumante sacred groves in the Eastern Region of Ghana. *Res. Zool.* 2, 38-  
595 46.
- 596 Nicol, E., Stevens, J.R., Jobling, S., 2017. Riverine fish diversity varies according to  
597 geographical isolation and land use modification. *Ecol. Evol.* 7, 7872-7883.

598 Nimis, P.L., 1987. I macrolicheni d'Italia: chiavi analitiche per la determinazione. Atti  
599 Mus. Friul. Storia Nat., grafiche Fulvio Spa, Udine.

600 Nitsiakos, V., 2016. Peklari, Social Economy in a Greek Village. Lit Verlag, Zurich.

601 Nixon, L., 2006. Making a landscape Sacred. Outlying Churches and Icon Stands in Sphakia,  
602 Southwestern Crete. Oxbow Books, Oxford.

603 O'Neill-Campbell, M., 2004. Traditional forest protection and woodlots in the coastal  
604 savannah of Ghana. *Environ. Conserv.* 31, 225–232.

605 Official Journal of the European Union, 2009. Directive 2009/147/EC of the European  
606 Parliament and of the Council of 30 November 2009 on the Conservation of Wild Birds.  
607 (Available at:). <http://eur-lex.europa.eu/legal-content/EN/TXT/?uri=CELEX:32009L0147>.

608 Official Journal of the European Union, 2011. Commission Implementing Decision of 11  
609 July 2011 Concerning a Site Information Format for Natura 2000 Sites. (Available at:).  
610 <http://eur-lex.europa.eu/legal-content/EN/ALL/?uri=CELEX%3A32011D0484>.

611 Oksanen, J., Guillaume Blanchet, F., Kindt, R., Legendre, P., Minchin, P.R., O'Hara, R.B.,  
612 Simpson, G.L., Solymos, P., Stevens, M.H.H., Szoecs, E., Helene Wagner, H., 2016. vegan:  
613 Community Ecology Package. R package version 2.3-3. [https://CRAN.R-](https://CRAN.R-project.org/package=vegan)  
614 [project.org/package=vegan](https://CRAN.R-project.org/package=vegan).

615 Orange, A., James, P.W., White, F.J., 2001. Microchemical methods for the identification  
616 of lichens. British Lichen Society, London.

617 Ormsby, A., 2013. Analysis of local attitudes toward the sacred groves of Meghalaya and  
618 Karnataka, India. *Conserv. Soc.* 11, 187–197.

619 Papanastasis, V.P., Yiakoulaki, M.D., Decandia, M., Dini-Papanastasi, O., 2008. Integrating  
620 woody species into livestock feeding in the Mediterranean areas of Europe. *Anim. Feed. Sci.*  
621 *Technol.* 140, 1- 17.

622 Pereira H.M, Ziv, G., Miranda, M., (2014) Countryside species-area relationship as a valid  
623 alternative to matrix-calibrated species-area model. *Conserv. Biol.* 28, 874-876.

624 Phillips, H.R.P., Halley, J.M., Urbina-Cardona, N.J., Purvis, A., 2017. The effect of fragment  
625 area on site-level biodiversity. *Ecography*. doi:10.1111/ecog.02956.

626 Pimm, S.L., Russell, G.J., Gittleman, J.L., Brooks, T.M., 1995. The future of biodiversity.  
627 *Science* 269, 347–350.

628 Politis, N., 1904 Meletai peri tou viou kai tis glossis tou ellinikou laou: Paradoxeis (Studies  
629 on life and language of Greeks: Traditions). PD Sakellariou editions, Athens. [in Greek]

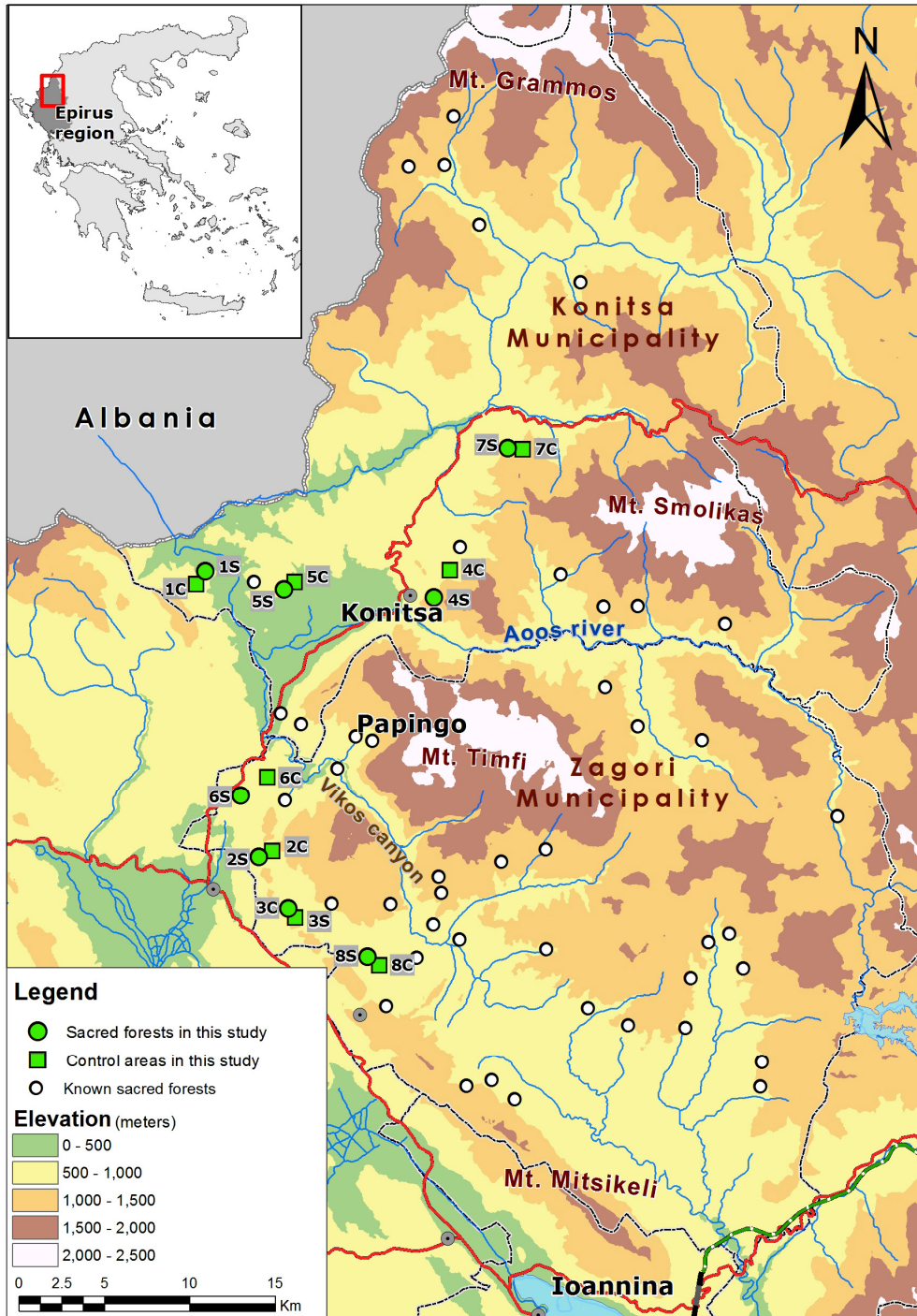
630 Purvis, W.O., Coppins, B.J., Hawksworth, D.L., James, P.W., Moor, D.M., 1992. The Lichen  
631 Flora of Great Britain and Ireland. The British Lichen Society, London.

632 R Core Team, 2015. R: A language and environment for statistical computing. R Foundation  
633 for Statistical Computing, Vienna, Austria. <https://www.R-project.org/>

634 Ramanujam, M.P., Praveen, K., Cyril, K., 2003. Woody species diversity of four sacred groves in the  
635 Pondicherry region of South India. *Biodiver. Conserv.* 12, 289–299.

- 636 Ramesh, T., Kalle, R., Downs, C.T., 2016. Predictors of mammal species richness in  
637 KwaZulu-Natal South Africa. *Ecol. Indic.* 60, 385-393.
- 638 Reed, L.W., Carol, J.P.C., 2004. Sacred forest, hunting, and conservation in west Kalimantan,  
639 Indonesia. *Hum. Ecol.* 32, 313–338.
- 640 S'Jacob, J.J., van Bezooijen, J., 1984. A manual for practical work in nematology.  
641 Department of Nematology, Wageningen Agricultural University: Wageningen, the  
642 Netherlands.
- 643 Stewart, C., 1993. Demons and the devil. Moral imagination in Modern Greek Culture.  
644 Princeton University Press, Princeton, New Jersey.
- 645 Soury, A., van Koppen, K., Tchibozo, M.S., Cotonou, B., 2007. Sacred forests: a sustainable  
646 conservation strategy? The case of sacred forests in the Quémé valley, Benin. Wageningen  
647 University, Wageningen.
- 648 Stara, K., Tsiakiris, R., Nitsiakos, V., Halley, J.M., 2016. Religion and the management of  
649 the commons - The sacred forests of Epirus, in: Agnoletti, M., Emanuelli, F. (Eds.),  
650 Biocultural diversity in Europe. Springer International Publishing, Switzerland, pp. 283-302.
- 651 Stara, K., Tsiakiris, R., Wong, J., 2012. Sacred trees and groves in Zagori, northern Pindos  
652 National Park, Greece, in: Pungetti, G., Oviedo, G., Hooke, D. (Eds.), Sacred species and  
653 sites. Advances in biocultural conservation. Cambridge University Press, Cambridge, pp.  
654 392–396.
- 655 Stara, K., Tsiakiris, R., Wong, J.L.G., 2015. The trees of the Sacred Natural Sites of Zagori,  
656 NW Greece. *Landsc. Res.* 40, 884-904.
- 657 Swamy, P.S., Kumar, M., Sundarapandian, S.M., 2003. Spirituality and ecology of sacred  
658 groves in Tamil Nadu. *Unasyuva* 54, 53–58.
- 659 Terborgh, J., 1999. *Requiem for Nature*, Island Press, Washington DC.
- 660 Tsiakiris, R., Betsis, A., Stara, K., Nitsiakos, V., Roubas, V., Halley, J.M., 2013. Defining  
661 sacred forests in Konitsa and Zagori: A method of randomly selecting research and control  
662 sites for biodiversity study and further statistical analysis. Report of 1<sup>st</sup> and 4<sup>th</sup> Working  
663 Groups. Project THALIS-SAGE “Conservation through religion. The sacred groves of  
664 Epirus”, pp 9.
- 665 Venables, W.N., Ripley, B.D., 2002. *Modern Applied Statistics with S*, fourth ed. Springer,  
666 New York.
- 667 Verschuuren, B., Wild, R., McNeely, J.A., Oviedo, G., 2010. *Sacred Natural Sites:  
668 Conserving Nature and Culture*. Earthscan, London.
- 669 Virtanen, P., 2002. The role of customary institutions in the conservation of biodiversity:  
670 Sacred forests in Mozambique. *Environ. Values* 11, 227–241.
- 671 Wadley, R.L., Colfer, C.J.P., 2004. Sacred forest, hunting and conservation in West  
672 Kalimantan, Indonesia. *Hum. Ecol.* 32, 313-338.

- 673 Wassie, A., Sterck, F.J., Bongers, F., 2010. Species and structural diversity of church forests  
674 in a fragmented Ethiopian Highland landscape. *J. Veg. Sci.* 21, 938–948.
- 675 Newmark, W.D., Jenkins, C.N., Pimm, S.L., McNeally, P.B., Halley, J.M., 2017. Targeted  
676 habitat restoration can reduce extinction rates in fragmented forests. *PNAS* 114, 9635-9640.
- 677 Wirth, V., 1995. *Die Flechten Baden-Württembergs*. 2nd ed. Ulmer, Stuttgart.
- 678 World Wide Fund for Nature, Equilibrium and Alliance of Religions and Conservation, 2005.  
679 *Beyond Belief: Linking Faiths and Protected Areas to Support Biodiversity Conservation*.  
680 WWF, London.
- 681 Wortley, L., Hero, J.-M., Howes, M., 2013. Evaluating ecological restoration success: a  
682 review of the literature. *Rest. Ecol.* 21(5), 537-543.
- 683 Yuan, J., Liu, J., 2009. Fengshui forest management by the Buyi ethnic minority in China.  
684 *For. Ecol. Manage.* 257, 2002–2009.
- 685 Zomeni, M., Tzanopoulos, J., Pantis, J.D., 2008. Historical analysis of landscape change  
686 using remote sensing techniques: An explanatory tool for agricultural transformation in  
687 Greek rural areas. *Landsc. Urban Plan.* 86, 38–46.
- 688



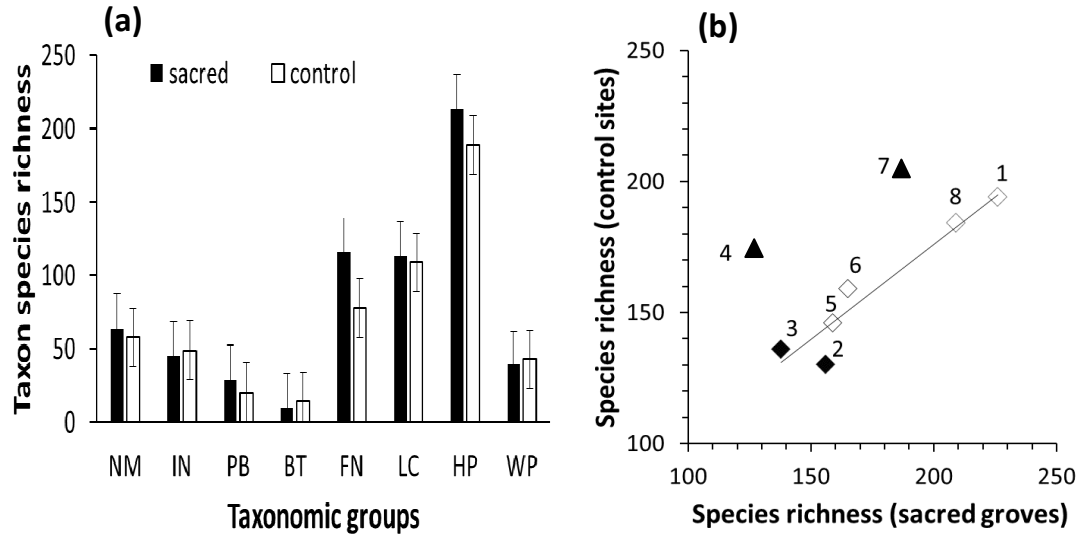
689

690

691 **Figure 1** Identified sacred groves (circles) in the broad area of Zagori and Konitsa. For the  
 692 current study, biodiversity was measured in eight of these sacred groves (green circles) and in  
 693 eight corresponding control sites (squares). Shown in the inset is the location of the Epirus  
 694 study area in Greece. Red lines denote major roads.

695

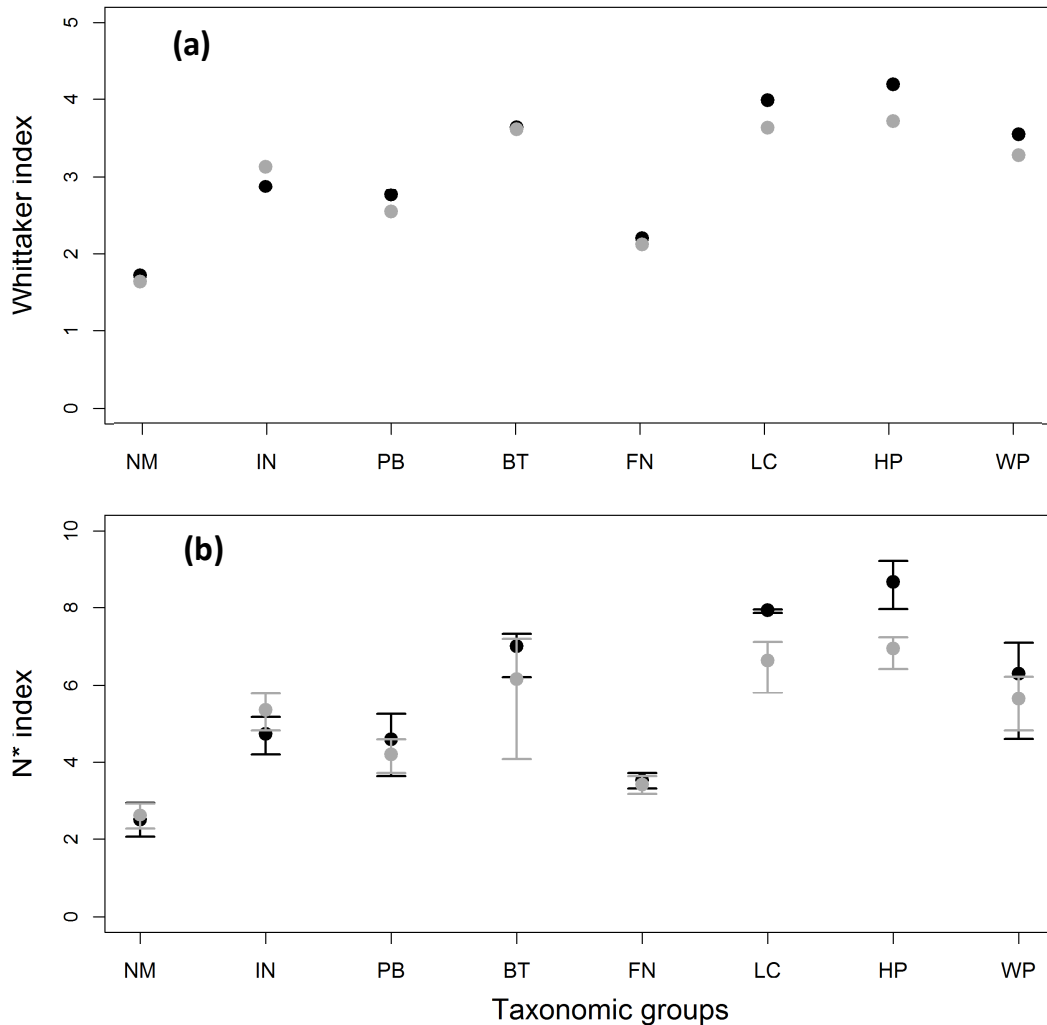
696  
697  
698  
699  
700  
701  
702  
703  
704  
705  
706



707 **Figure 2** Representations of biodiversity in the sacred and control sites for various taxonomic  
 708 groups: **(a)** Total species richness (genus richness for nematodes) in each group of species  
 709 across all eight sacred groves and their respective control sites (with mean and standard error  
 710 bars). Taxonomic groups are: NM, nematodes; IN, insects; PB, passerine birds; BT, bats; FN,  
 711 fungi; LC, lichens; HP, herbaceous plants; WP, woody plants. **(b)** Scatterplot of species  
 712 richness recorded in sacred groves and their respective control sites. The fitted line  
 713 ( $y=0.727x+30.56$ ,  $R^2 = 0.912$ ) was calculated after the two pairs of sites dominated by  
 714 conifers (4 and 7) were excluded. Open diamonds are deciduous broadleaved sites, closed  
 715 diamonds evergreen broadleaved sites and closed triangles coniferous sites.

716

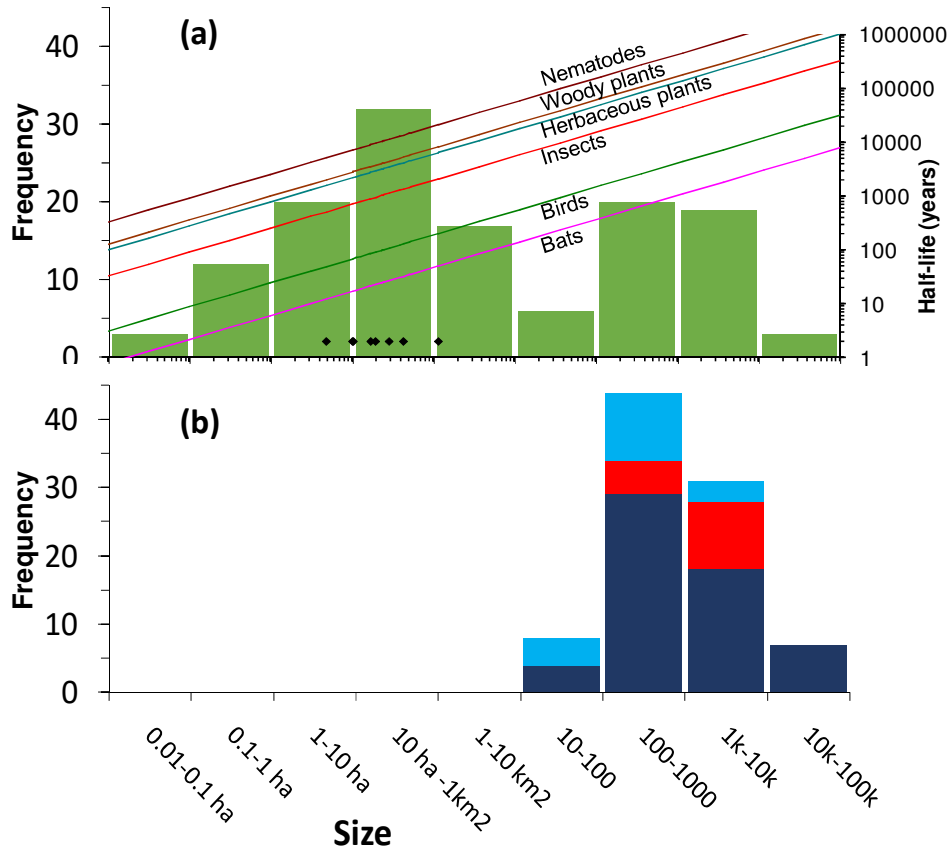




718

719 **Figure 3** Species turnover measured as the beta diversity between the local scale (sites) and  
 720 global scale (union of sites): (a) Whittaker index and (b)  $N^*$  index for the sets of eight sacred  
 721 groves (black) and respective control sites (gray), by taxonomic group (NM, nematodes; IN,  
 722 insects; PB, passerine birds; BT, bats; FN, fungi; LC, lichens; HP, herbaceous plants; WP,  
 723 woody plants) with error bars corresponding to the standard deviation of the species  
 724 accumulation curve used to estimate the  $N^*$  index. In the case of nematodes, genus turnover  
 725 is shown.

726



727

728 **Figure 4 (a)** Histogram of area for 126 SNS: 22 mapped in Epirus and 104 found in our  
 729 literature search. Superimposed on this is the expected half-life of species loss following  
 730 habitat isolation using Eq. 3 for all taxonomic groups except fungi and lichens for areas  
 731 ranging from 0.01 hectare to 100,000 km<sup>2</sup>. The taxonomic group name appears below the line  
 732 except for nematodes and woody plants for which it is above the line. The sizes of the eight  
 733 sacred groves of Epirus in this study are shown as black dots just above the horizontal axis.  
 734 **(b)** Histogram of area for the national parks in Greece (light blue), Great Britain (red) and the  
 735 USA (dark blue). The main divisions (powers of 10) in the horizontal axis are the same for  
 736 both panels.

737

738 **Table 1.** Location, area and vegetation type of the eight sacred groves (S) and their respective  
 739 control sites (C). For vegetation type, D = deciduous broadleaf, E = evergreen broadleaf, C =  
 740 coniferous forests.

741

Associated village	Vegetation type	Sacred groves		Control sites	
		Code	Area (ha)	Code	Area (ha)
Aidonohori	D	1S	19.8	1C	16.24
Elafotopos	E	2S	29.11	2C	69.09
Kato Pedina	E	3S	10.33	3C	55.23
Konitsa	C	4S	115.7	4C	538.9
Mazi	D	5S	10.37	5C	54.24
Mesovouni	D	6S	17.02	6C	22.01
Molista	C	7S	43.29	7C	41.29
Vitsa	D	8S	4.87	8C	41.38

742

## 750 **Appendix A – Selection of sacred groves, control sites and sampling points**

### 751 *Sacred sites*

752 We identified sacred grove sites across the landscape based on archival and ethnographic  
753 fieldwork. We further identified and mapped the borderline of these groves using ortho-  
754 rectified aerial photographs from the year 1945, which is the oldest complete set of aerial  
755 photographs of the area. From these identified sacred groves, eight were selected on the basis  
756 of a number of criteria. Firstly, we excluded those less than 3.5 hectares in size, as estimated  
757 for 1945, so as to secure at least one permanent bird observation point of 100 m radius (see  
758 Appendix B) in each grove. Secondly, we excluded all sites for which there was evidence of  
759 substantive felling of trees during the last 60 years, according to the Forestry Department  
760 management plans and records or earlier ethnographic or field research. To the remaining  
761 sites, we applied the criteria of a minimum threshold of 70% current tree cover and lack of  
762 degradation, based on recent ethnographic and field data. From the initial shortlist of sites, a  
763 stratified set of sacred groves was selected so as to cover a range of cultural diversity  
764 (cultural units, ritual praxes and management regimes) according to ethnographic data (See  
765 Appendix E). Where possible (all criteria being satisfied), groves closer to roads were chosen  
766 so as to reduce field work and allow more time for sampling. The final set of sacred groves  
767 that were selected was limited to eight because of time constraints.



768

769 Fig A1. View from inside three sacred groves of different types: (left) Elafotopos, a broadleaved evergreen  
770 forest (2S), (middle) Molista, a coniferous forest (7S), and (right) Aidonochori, a deciduous forest (1S). (Photos  
771 K. Stara 2015)

772

### 773 *Control sites*

774 Since our main hypotheses concern biodiversity, we define a control site for each sacred  
775 grove so as to assess the biodiversity difference relative to a non-sacred, reference forest.  
776 This approach has been used widely in similar studies of biodiversity comparisons (Wortley  
777 et al. 2013, Derhé et al. 2016). Here, the selection priority is to find a non-sacred forest for  
778 which the environmental factors are as close as possible to the sacred grove. Thus, for each of  
779 the eight sacred groves, we identified the best matched control site (without sacred status but  
780 with similar site environment and vegetation characteristics) according to a series of criteria:  
781 (a) the site had to be close to the respective sacred site (less than 4 km), (b) its area should be

782 as large or larger than the respective sacred site, (c) tree cover in it should be no less than  
783 70%, (d) it should be of the same vegetation type (dominated by coniferous, evergreen  
784 broadleaved or deciduous broadleaved trees) as the sacred grove, (e) it should have the same  
785 geological bedrock, and also (f) similar slope and aspect. Selection was based on the analysis  
786 of ortho-rectified aerial photos from 2007, existing forest vegetation maps, digitized  
787 geological maps of 1:5000 scale, and the Google Earth digital elevation model, supplemented  
788 by observations during field visits. Their boundaries were defined using all of the above  
789 criteria. Control sites were usually part of larger contiguous woodland areas and except for  
790 one, they were larger in area than the sacred sites.



791

792 Fig A2. View from the outside of two sacred groves of different types: (left) Molista, a coniferous forest (7S)  
793 lies behind slope above village, and (right) the evergreen broadleaved grove of Kato Pedina (3S) rises upwards  
794 to the right along the slope above the village. See also Appendix H. (Photos K. Stara 2015)

### 795 *Sampling points*

796 Inside each sacred site and in each corresponding control site, a set of points was chosen by  
797 random placement. These points were subject to the additional constraints that they should be  
798 located at least 100 m from the woodland edge and separated from any other by at least 300  
799 m. These criteria define a maximum number of independent sample plots that can fit in each  
800 site. A heuristic algorithm [Generate Random Points, provided by the online software  
801 ‘Geospatial Modelling Environment’ ([www.spatial ecology.com](http://www.spatial ecology.com))] was employed to provide  
802 the sequence of potential sampling points for each taxon. A common sequence of random  
803 points was generated for each site and provided to all the teams working on different  
804 taxonomic groups. However, the teams were not constrained to use the same points. For each  
805 taxonomic group, the same sampling effort was used in all sites and the total number of  
806 species that were found in the site was recorded.

807

## 808 **Appendix B – Sampling protocols**

### 809 *Nematodes*

810 Four sampling points were chosen at each site (sacred and control) and at each a plot of 100  
811 m<sup>2</sup> was established. In each plot, a composite soil sample of five soil cores, 3 cm in diameter

812 and 12 cm in depth, was collected, so that four composite samples were taken from each site.  
813 In all cases, the litter layer was removed before sampling. Nematodes were extracted from  
814 200 cm<sup>3</sup> of each composite soil sample. For extraction, the modified Cobb's sieving and  
815 decanting method (S'Jacob and van Bezooijen, 1984) was employed. After counting total  
816 abundance of nematodes, samples were fixed with 4% formaldehyde solution. From each  
817 sample, 150 nematodes were selected and identified to the genus level using an identification  
818 key (Bongers, 1994). In cases where the number of specimens of a sample was less than 150,  
819 we identified them all.

#### 820 *Insects*

821 One sampling point was chosen at each site. Insect sampling was conducted using a modified  
822 Pollard sampling scheme (Caldasa and Robbins, 2003), following transects in four directions  
823 (N, S, E, W) of 200 m, with a width of 10 m on each side of the center line, lasting exactly 45  
824 minutes. Sites were visited twice (early summer 2013 and late summer 2014) for five days  
825 each time, in order to include species that appear in different periods during the year, while  
826 the order at which sites were sampled differed each time, so as to avoid a bias induced by the  
827 specific time of the day. Flying adult insects were collected in nets, whereas soil dwelling and  
828 wood-boring adult insects were retrieved with the help of a knife and a tweezer. Specimens  
829 were then put into plastic bags and were given a label that described the site, the time and the  
830 number of individuals observed for each species. Identification was conducted at the  
831 Laboratory of Forest Entomology (Forest Research Institute - HAO Demeter, Greece) using  
832 the appropriate morphological keys for each insect order.

#### 833 *Passerine birds*

834 One sampling point was chosen at each site. Point counts of a fixed radius of 100 m were  
835 carried out, recording all bird species observed or identified from their calls and breeding  
836 songs for a fixed time period of 10 minutes. One point-count was conducted per site, at the  
837 same fixed point, in early morning (from 30 min before dawn and for a duration of 3 h) on  
838 two dates, in early and late spring (with the interval between replicates being less than 30  
839 days). Breeding songs were considered to indicate a pair of birds, whereas all other  
840 observations indicated one individual. The sum of individuals that were recorded on the two  
841 sampling dates, in each site, were taken as the measure of abundance in the analysis.

#### 842 *Bats*

843 One sampling point was chosen at each site. Starting from there, another four sampling points  
844 were selected on a line with an approximate distance of 100 m between them. Echolocation  
845 calls of bats were recorded at each point for 15 minutes as well as between points (while  
846 walking from one point to the next), using the ultrasound receiver Batcorder (ecoObs).  
847 Recordings started half an hour after sunset and lasted approximately one and a half hours in  
848 each site. Sampling was conducted from mid to late summer and was repeated twice in each  
849 site, in 2013 and 2014. Calls were analyzed and species were identified by use of the  
850 ultrasound analysis software bcAnalyze v.2 (ecoObs).

851 *Fungi*

852 Sampling was conducted at eight sampling points within each sacred and control site. At each  
853 point, a plot of 200 m<sup>2</sup> was clearly marked along its edges and carefully examined for fungal  
854 carpophores. The area was visited twice during the year: in autumn, when most  
855 Basidiomycetes fruit, and again in spring in order to observe the fruiting Ascomycetes.  
856 Sampling was thus carried out four times in each of the 16 sites: autumn 2013, spring and  
857 autumn 2014 and autumn 2015. The exact timing of the visits relied on the information given  
858 by local collaborators about the occurrence of fruiting. Carpophores on all substrates (soil,  
859 leaf litter, dead wood) were sampled. Their identification was based on their macroscopic  
860 features in the field. Specimens of each species were counted and recorded. Specimens whose  
861 identification was in doubt were kept in portable coolers and taken to the Laboratory of  
862 Forest Pathology & Mycology (Forest Research Institute - HAO Demeter, Greece) for further  
863 laboratory examination and verification.

864 *Lichens*

865 In each site, one sampling point was chosen as the centroid of a 250 m<sup>2</sup> sample plot. Lichen  
866 sampling was carried out on tree trunks up to 2 m above ground, on five individuals of each  
867 tree species present in the plot. The sampling followed a random time- and species recovery-  
868 constrained strategy: on the set of sampled trees, all crustose, foliose or fruticose species  
869 observed were collected until no additional species could be detected. All collecting sites  
870 were visited once. The identification of the lichen material was carried out using stereo-  
871 (Zeiss Stemi) and light-microscopes (Zeiss Axioscope). Standard chemical spot tests, based  
872 on potassium hydroxide, bleach, iodine and para-phenylenediamine, and thin layer  
873 chromatography (Orange et al., 2001) were applied, and results were compared with those  
874 from literature (Clauzade and Roux, 1985; Nimis, 1987; Purvis et al., 1992; Wirth, 1995).  
875 Specimens are stored at the GZU Herbarium of the Institute of Plant Science, Karl-Franzens  
876 University of Graz (Austria).

877 *Herbaceous and Woody Plants*

878 In each site, two sampling points were selected. At each, a plot of 250 m<sup>2</sup> was set up. Within  
879 these plots, every vascular plant, whether a seed plant (Spermatophyta) or a fern  
880 (Pteridophyta), was identified to species level and recorded. Species were further divided into  
881 herbaceous and woody plants.

882 **Appendix C - Species richness and its analysis**

883 The location of the eight selected sacred groves of Konitsa and Zagori, in Epirus,  
884 northwestern Greece, and of their matching control sites are presented in Table C.1. Given  
885 are for each site (sacred grove or control) the number of species that were recorded for each  
886 of the eight taxonomic groups examined per site and overall.

887 A generalized linear regression model was built to test the effect of site area (area containing  
888 the sampling locations within each site), site type (sacred or control) and vegetation type  
889 (dominated by coniferous, evergreen broadleaved or deciduous broadleaved trees) on the total  
890 species richness ( $S$ ) and on the species richness within each taxonomic group (for nematodes  
891 this was genus richness). The model used is  $S \sim area + type + vegetation\ type + area:type$ ,  
892 with a Poisson response and a logarithmic link function. The results are summarized in Table  
893 C.2. The significance of each predictor variable is judged on a 5% significance level.



894 | **Table C.1.** Number of species\* recorded in the eight sacred groves (S) and their respective control sites (C) by taxonomic group. Total  
895 | corresponds to the total species richness across all sites of each type for each taxonomic group (columns), and across all species groups for each  
896 | site (rows). The grand total is the number of species in each group found across all 16 sites. For vegetation type, D = deciduous broadleaf, E =  
897 | evergreen broadleaf, C = coniferous forests.  
898 |

Type	Site	Number of species								Total
		Nematodes*	Insects	Passerine birds	Bats	Fungi	Lichens	Herbaceous plants	Woody plants	
sacred groves	Aidonohori (1S)	39	9	14	2	33	48	70	11	<b>226</b>
	Elafotopos (2S)	48	10	7	3	14	19	46	9	<b>156</b>
	Kato Pedina (3S)	32	11	6	2	21	12	47	7	<b>138</b>
	Konitsa (4S)	35	7	9	4	13	20	30	8	<b>126</b>
	Mazi (5S)	37	9	10	5	8	33	46	11	<b>159</b>
	Mesovouni (6S)	39	11	9	1	20	21	49	15	<b>165</b>
	Molista (7S)	37	11	14	2	22	24	58	16	<b>184</b>
	Vitsa (8S)	35	7	15	3	27	50	61	11	<b>209</b>
	<i>Total</i>	<b>64</b>	<b>45</b>	<b>29</b>	<b>10</b>	<b>116</b>	<b>113</b>	<b>213</b>	<b>39</b>	<b>629</b>
control sites	Aidonohori (1C)	31	8	9	2	11	42	74	17	<b>194</b>
	Elafotopos (2C)	46	10	6	5	12	15	28	8	<b>130</b>
	Kato Pedina (3C)	42	9	7	6	12	23	28	9	<b>136</b>
	Konitsa (4C)	36	11	8	4	17	29	48	10	<b>163</b>
	Mazi (5C)	25	5	9	6	10	23	57	11	<b>146</b>
	Mesovouni (6C)	31	8	5	2	20	27	50	16	<b>159</b>
	Molista (7C)	38	11	9	2	12	42	63	19	<b>196</b>
	Vitsa (8C)	34	11	10	4	12	39	59	15	<b>184</b>
	<i>Total</i>	<b>58</b>	<b>49</b>	<b>20</b>	<b>14</b>	<b>78</b>	<b>109</b>	<b>189</b>	<b>43</b>	<b>560</b>
	<i>Grand total</i>	<b>72</b>	<b>69</b>	<b>29</b>	<b>14</b>	<b>159</b>	<b>152</b>	<b>270</b>	<b>51</b>	<b>816</b>

899 | \*Number of genera for nematodes.

900 | **Table C.2.** Summary statistics and ANOVA results of the generalized linear regression model  
 901 predicting species richness (total and per taxonomic group) from the site area (extent of  
 902 sampling area), the site type (S for sacred; control is baseline) and the vegetation type (E,  
 903 evergreen broadleaved forest; D, deciduous broadleaved forest; coniferous forest is baseline).  
 904 The model coefficient estimates (Estimate), standard error of the estimate (Std. error),  
 905 associated  $p$ -value ( $\text{Pr}(>|z|)$ ) and ANOVA  $p$ -values ( $\text{Pr}(>>\text{Chi})$ ) are given.

Taxonomic group	Summary statistics			ANOVA		
	Estimate	Std. Error	$\text{Pr}(> z )$		$\text{Pr}(>>\text{Chi})$	
<b>All species</b>	(Intercept)	2.358	0.444	1.09E-07		
	Area	-0.042	0.037	0.252	Area	0.582
	type S	-0.843	0.475	0.076	Type	0.788
	vegetation D	0.262	0.230	0.253	vegetation	<b>0.001</b>
	vegetation E	-0.500	0.331	0.131	area:type	<b>0.018</b>
	area:type S	0.123	0.052	0.017		
<b>Nematodes</b>	(Intercept)	3.571	0.150	0		
	Area	0.00004	0.0004	0.931	Area	0.994
	type S	0.088	0.108	0.418	Type	0.412
	vegetation D	-0.090	0.150	0.549	vegetation	0.097
	vegetation E	0.126	0.150	0.399	area:type	0.771
	area:type S	-0.001	0.002	0.772		
<b>Insects</b>	(Intercept)	2.398	0.276	0		
	Area	-1.17E-05	0.001	0.988	Area	0.644
	type S	0.186	0.218	0.393	Type	0.751
	vegetation D	-0.319	0.281	0.256	vegetation	0.694
	vegetation E	-0.140	0.285	0.623	area:type	0.255
	area:type S	-0.005	0.005	0.269		
<b>Passerine birds</b>	(Intercept)	2.398	0.276	0		
	Area	-1.17E-05	0.001	0.988	Area	0.644
	type S	0.186	0.218	0.393	Type	0.751
	vegetation D	-0.319	0.281	0.256	vegetation	0.694
	vegetation E	-0.140	0.285	0.623	area:type	0.255
	area:type S	-0.005	0.005	0.269		
<b>Bats</b>	(Intercept)	2.398	0.276	0		
	Area	-1.17E-05	0.001	0.988	Area	0.492
	type S	0.186	0.218	0.393	Type	0.277
	vegetation D	-0.319	0.281	0.256	vegetation	0.584
	vegetation E	-0.140	0.285	0.623	area:type	0.278
	area:type S	-0.005	0.005	0.269		
<b>Fungi</b>	(Intercept)	2.589	0.232	0		
	Area	0.0004	0.001	0.506	Area	0.671
	type S	0.585	0.163	0.0003	Type	<b>0.001</b>
	vegetation D	-0.021	0.227	0.927	vegetation	0.357

	vegetation E	-0.186	0.236	0.431	area:type	0.130
	area:type S	-0.005	0.003	0.139		
<b>Lichens</b>	(Intercept)	3.635	0.153	0		
	Area	-0.001	0.0004	0.270	Area	0.443
	type S	0.104	0.121	0.389	Type	0.390
	Vegetation D	-0.065	0.154	0.672	vegetation	<b>1.01E-07</b>
	Vegetation E	-0.754	0.179	2.61E-05		
	area:typeS	-0.007	0.003	0.015	area:type	<b>0.0113</b>
<b>Herbaceous plants</b>	(Intercept)	4.173	0.117	0		
	Area	-0.001	0.0005	0.093	Area	0.166
	type S	0.147	0.092	0.109	Type	0.676
	vegetation D	-0.126	0.117	0.285	vegetation	<b>7.6E-06</b>
	vegetation E	-0.542	0.130	3.03E-05	area:type	<b>0.001</b>
	area:type S	-0.006	0.002	0.002		
<b>Woody plants</b>	(Intercept)	3.051	0.215	0		
	Area	-0.001	0.001	0.055	Area	0.377
	type S	-0.119	0.190	0.531	Type	0.125
	vegetation D	-0.336	0.221	0.129	Vegetation	<b>0.012</b>
	vegetation E	-0.778	0.255	0.002	area:type	0.211
	area:type S	-0.005	0.004	0.225		

906

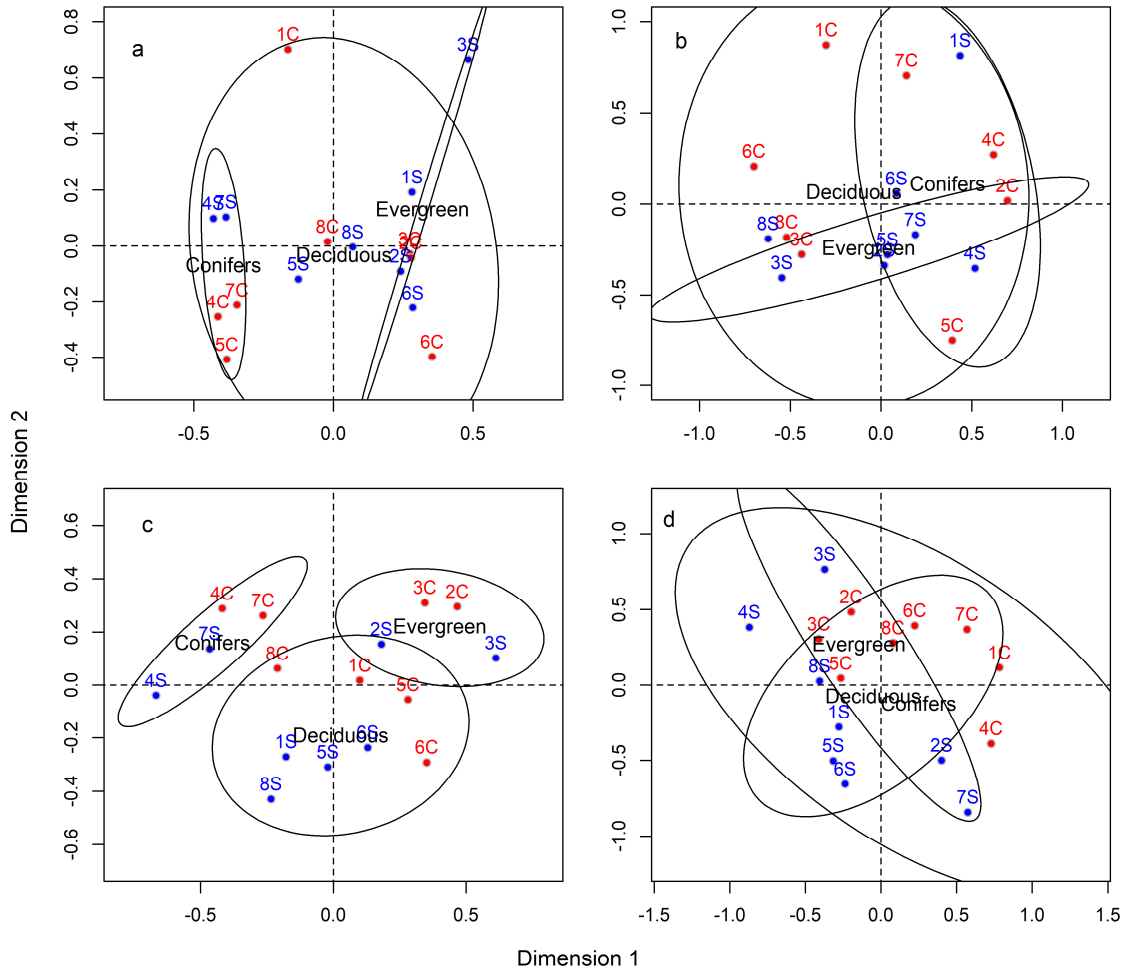
907

## 908 **Appendix D - Ordination analysis**

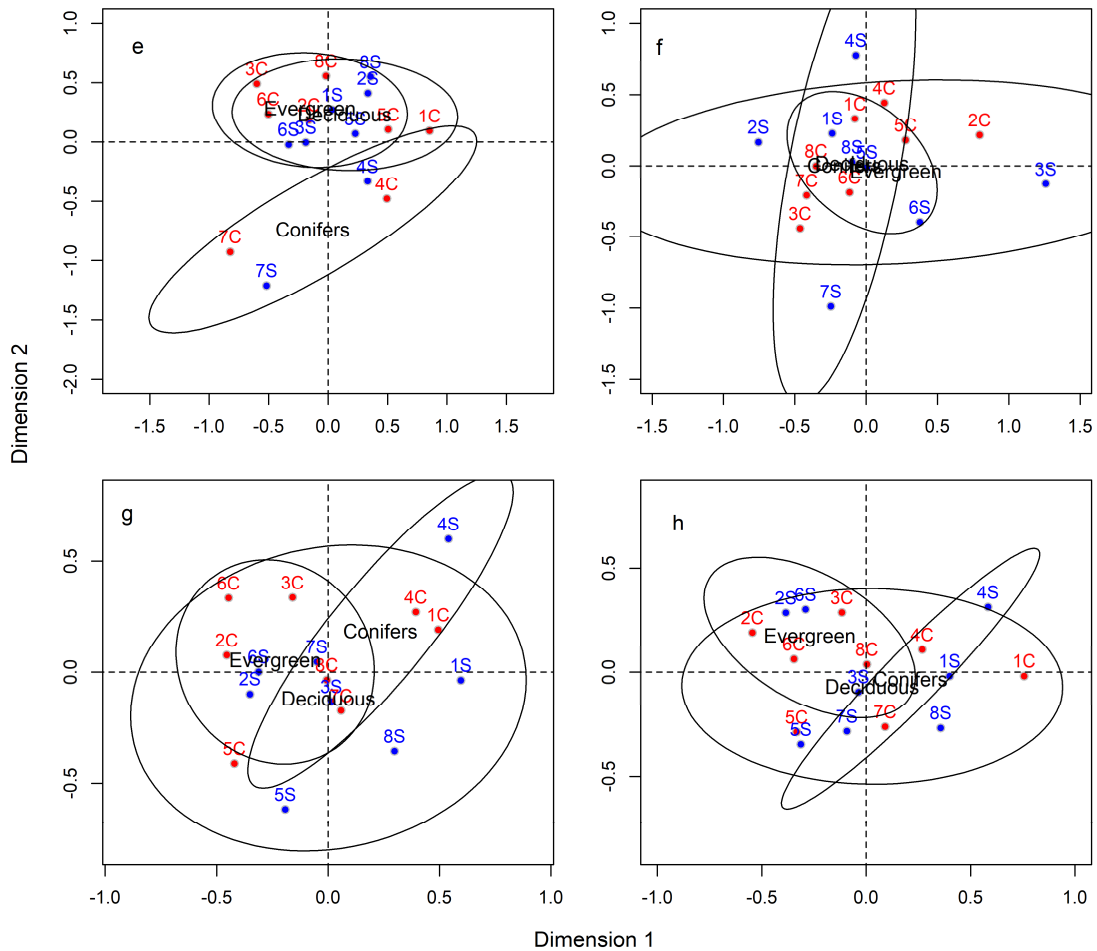
909 To visualize the difference in composition between sites, multidimensional scaling analysis  
910 based on Bray-Curtis dissimilarity was conducted for each taxon, separately, and for all taxa  
911 combined. The analysis was implemented in R 3.2.3 (R Core Team, 2015) using function  
912 *isoMDS* of the MASS package (Venables and Ripley, 2002) and function *vegdist* of the  
913 VEGAN package (Oksanen et al., 2016).

914 For herbaceous and woody plant species, ordination showed a surprising lack of  
915 differentiation in floristic composition between the three vegetation types corresponding to  
916 different topographic positions (Fig. D.1). This is possibly due to the fact that we have only  
917 presence counts for these taxonomic groups. For the other species, patterns of species  
918 composition amongst sites varied notably by taxonomic group. For lichens, insects and bats,  
919 there was no clear pattern, with much overlap amongst the pairs and the vegetation types. For  
920 passerine birds, there was a clear distinction amongst the three vegetation types, but the two  
921 sites within each pair were not closely clustered. Notably, for passerine birds there is a  
922 separation between sacred groves and control sites. For the remaining two taxonomic groups,  
923 the conifer-dominated sites were distinct from the broadleaf tree-dominated ones, but  
924 whereas for the fungi the two sites within each pair were quite well clustered, for the  
925 nematodes they tended to be split. For all species combined, there is a clear distinction in the  
926 species composition of the three vegetation types and for the majority of the eight pairs (Fig.  
927 D.2). However, the ordination analyses did not reveal any consistent differences in

928 composition between the two types of sites (sacred groves and control) for the individual  
 929 groups of species or for all species combined.



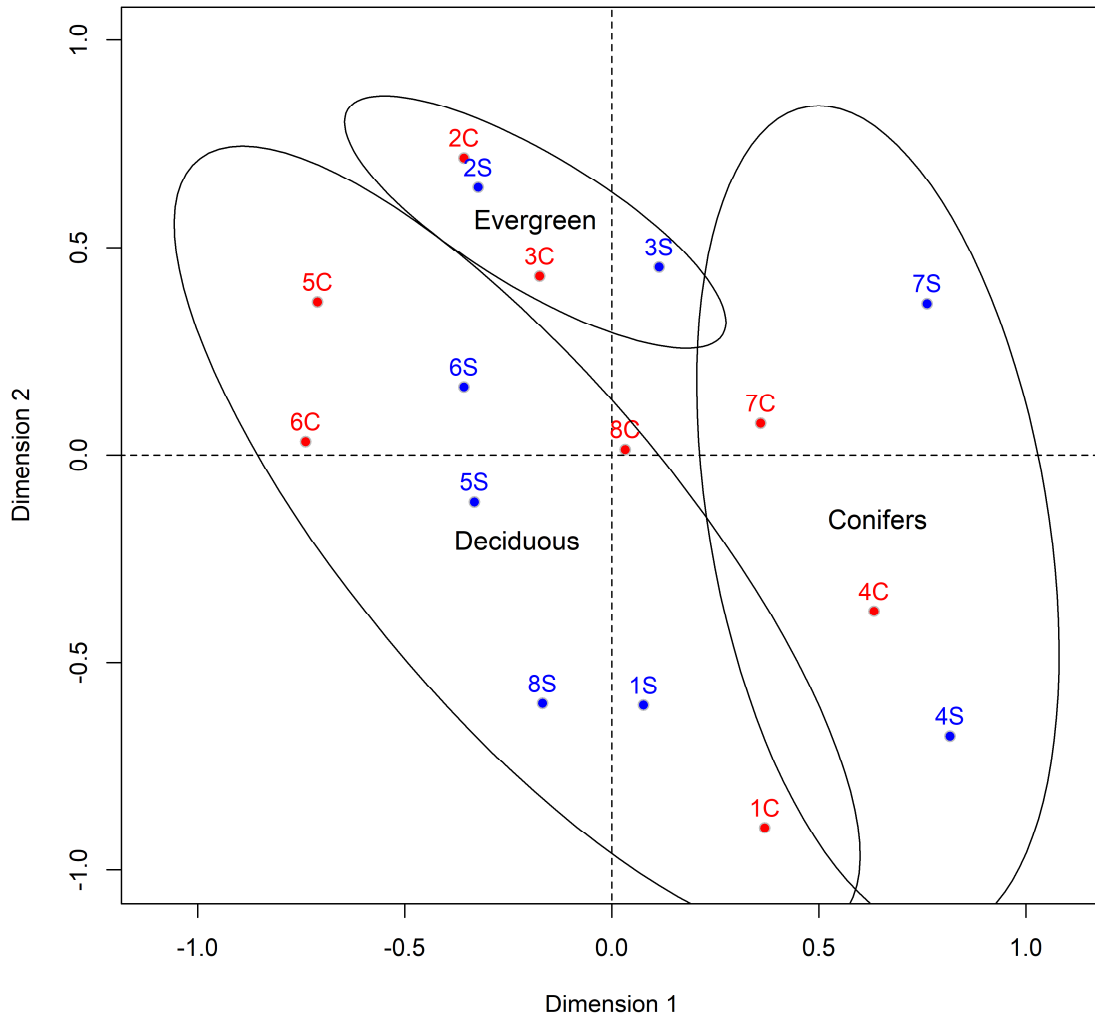
930



931

932 **Figure D.1.** Ordination of sacred groves (S) and respective control sites (C) using  
 933 multidimensional scaling with the Bray-Curtis dissimilarity index as a measure of the  
 934 distance between sites for (a) nematodes, (b) insects, (c) passerine birds, (d) bats, (e) fungi,  
 935 (f) lichens, (g) herbaceous plants, (h) woody plants. Ellipses define 90% intervals of the  
 936 distribution of scores within the three vegetation types dominated by different tree types (C,  
 937 coniferous; E, evergreen broadleaved; D, deciduous broadleaved). The analysis was  
 938 implemented in R using function *isoMDS* in the MASS package.

939



940

941

942 **Figure D.2.** Ordination of sacred groves (S) and respective control sites (C) using  
 943 multidimensional scaling with the Bray-Curtis dissimilarity index as a measure of the  
 944 distance between sites. Data from all taxa were reduced to presence-only before carrying out  
 945 the analysis. Ellipses define 90% intervals of the distribution of scores within the three  
 946 vegetation types dominated by different tree types (coniferous, evergreen broadleaved and  
 947 deciduous broadleaved). The analysis was implemented in R using function *isoMDS* in the  
 948 MASS package.

949

950

951 **Appendix E – SCI species**

952 **Table E.1.** Species of Community Interest (SCI) identified in each sacred grove and  
 953 respective control site of this study. Of the 8 taxa investigated, SCI species were identified  
 954 only for bats, insects, passerine birds (Passer.), herbaceous plants (P-herb) and woody plants  
 955 (P-Wood), as nematodes were identified at the genus level and in some cases also lichens and  
 956 fungi.  
 957

Type	Location	Code	Number of SCI					Total
			Bats	Insects	Passerine birds	Herbaceous plants	Woody plants	
sacred groves	Aidonohori	1S	0	0	1	0	0	1
	Elafotopos	2S	1	0	0	0	1	2
	Kato Pedina	3S	1	0	1	0	1	3
	Konitsa	4S	0	0	1	0	1	2
	Mazi	5S	0	0	3	0	1	4
	Mesovouni	6S	0	0	2	0	1	3
	Molista	7S	0	0	3	0	0	3
	Vitsa	8S	0	1	1	0	1	3
	<i>Total</i>		<b>1</b>	<b>1</b>	<b>8</b>	<b>0</b>	<b>1</b>	<b>11</b>
control sites	Aidonohori	1C	0	0	1	0	1	2
	Elafotopos	2C	1	0	0	0	1	2
	Kato Pedina	3C	1	0	1	0	1	3
	Konitsa	4C	0	0	1	0	0	1
	Mazi	5C	0	0	0	0	1	1
	Mesovouni	6C	0	0	1	0	1	2
	Molista	7C	0	0	2	0	0	2
	Vitsa	8C	0	2	1	0	1	4
	<i>Total</i>		<b>2</b>	<b>2</b>	<b>4</b>	<b>0</b>	<b>1</b>	<b>9</b>
	<i>Grand Total</i>		<b>2</b>	<b>2</b>	<b>8</b>	<b>0</b>	<b>1</b>	<b>13</b>

958

959

960 **Appendix F – Size of sacred natural sites and national parks size worldwide**

961 **Table F.1.** Sacred natural sites (SNS) included in the comparative analysis. SNS mapped by  
 962 us in the study area are in italics (for these, the names are in two parts: [village name]-[sacred  
 963 forest name]). Those whose biodiversity we surveyed also are in bold.

Name	Area (ha)	Country	Continent	Reference
Tsodilo Hills	9,000.0	Botswana	Africa	WWF 2005
Zaipobly	12.3	Côte d’Ivoire	Africa	WWF 2005
Gufae	33.5	Ethiopia	Africa	Daye & Healey 2015
Tele	12.6	Ethiopia	Africa	Daye & Healey 2015
Osha-Ocha	5.3	Ethiopia	Africa	Daye & Healey 2015
Akasie	4.9	Ethiopia	Africa	Daye & Healey 2015
Ula	1.8	Ethiopia	Africa	Daye & Healey 2015

Qimme	0.7	Ethiopia	Africa	Daye & Healey 2015
Bortianor	164,892.0	Ghana	Africa	O'Neal Campbell 2005
Oshiye	772.0	Ghana	Africa	O'Neal Campbell 2005
Asantemanso Sacred grove	295.0	Ghana	Africa	Bossart et al. 2006
Boabeng-Fiema	190.0	Ghana	Africa	Larsen et al. 2009
Gyakye Sacred grove	11.5	Ghana	Africa	Bossart et al. 2006
Bonwire Sacred grove	8.0	Ghana	Africa	Bossart et al. 2006
Kajease forest	6.0	Ghana	Africa	Bossart et al. 2006
Kokrobite	0.1	Ghana	Africa	O'Neill Campbell 2005
Abiriw	0.04	Ghana	Africa	Nganso et al. 2012
Odumante	0.03	Ghana	Africa	Nganso et al. 2012
Mount Kenya	142,020.0	Kenya	Africa	Dudley et al. 2009
Mijikenda Kaya forests	6,000.0	Kenya	Africa	Githitho 2003
Nyika National Park	313,400.0	Malawi	Africa	Dudley et al. 2009
Sacred groves of Oshogbo	55.0	Nigeria	Africa	Dudley et al. 2009; WWF 2005
Limpopo's Modjadji Reserve	439.0	South Africa	Africa	Dudley et al. 2009; WWF 2005
Misali Island marine conservation area	2,158.0	Tanzania	Africa	Dudley et al. 2009
Mude Lhong	330.0	Thailand	Asia	Junsongduang et al. 2013
Jigme Dorji Wildlife Sanctuary	790,495.0	Bhutan	Asia	Dudley et al. 2009
Angkor	40,000.0	Cambodia	Asia	WWF 2005
Xishuangbanna	247,439.0	China	Asia	Dudley et al 2009; WWF 2005
Meghalaya	100,000.0	India	Asia	Mishra et al. 2004
Periyar Tiger reserve	77,700.0	India	Asia	Dudley et al. 2009
Mawsmai Syiem	122.0	India	Asia	Ormsby 2013
Law Lyngdoh	77.0	India	Asia	Ormsby 2013
Ayappa	41.7	India	Asia	Ormsby 2013
Ayyapa devarakadu	16.6	India	Asia	Ormsby 2013
Betekurubara devarakadu	15.9	India	Asia	Ormsby 2013
Khloo Langdoh	15.7	India	Asia	Ormsby 2013
Khloo Blai Phlong	10.0	India	Asia	Ormsby 2013
Ayyapa Kadanoor	10.0	India	Asia	Ormsby 2013
Poonya Bhagavathi	7.0	India	Asia	Ormsby 2013
Law Lyngdoh	4.4	India	Asia	Ormsby 2013
Battemaki	3.6	India	Asia	Ormsby 2013
Periya Mudaliar	3.2	India	Asia	Ramanujan et al. 2003
Karekud	3.0	India	Asia	Ormsby 2013
Koorvale	3.0	India	Asia	Ormsby 2013
Bhagavathi temple	2.0	India	Asia	Ormsby 2013
Kadenkad	1.6	India	Asia	Ormsby 2013
Kundachappa	1.4	India	Asia	Ormsby 2013
Kilialamman	1.0	India	Asia	Ramanujan et al. 2003
Keezhbuvanagiri	1.0	India	Asia	Ramanujan et al. 2003
Mahadevara	1.0	India	Asia	Ormsby 2013
Kikut Aiyappa	1.0	India	Asia	Ormsby 2013
Pammangalathamme	0.8	India	Asia	Ormsby 2013



Aiyappa (Mythadi)	0.8	India	Asia	Ormsby 2013
Ayappa Temple	0.6	India	Asia	Ormsby 2013
Chamundi	0.6	India	Asia	Ormsby 2013
Kalath Bhagavathi	0.5	India	Asia	Ormsby 2013
Periya Kattupalayam Chavadi	0.4	India	Asia	Ramanujan et al. 2003
Bhagavathi temple Kadanoor	1.0	India	Asia	Ormsby 2013
Alagar hills	4,500.0	India-Tamil Nadu	Asia	Swamy et al. 2003
Kandanur	33.0	India-Tamil Nadu	Asia	Swamy et al. 2003
Solai-Anadaver kovil	12.0	India-Tamil Nadu	Asia	Swamy et al. 2003
Ayaanar kovil	10.0	India-Tamil Nadu	Asia	Swamy et al. 2003
Danau Sentarum National Park	80,000.0	Indonesia	Asia	Wadley and Colfer 2004
Mount Hakusan	14,826.0	Japan	Asia	Dudley et al. 2009
The sacred forest of Kashima	1,500.0	Japan	Asia	WWF 2005
Kii Mountain range	265.0	Japan	Asia	Mallarach & Papayannis 2006
Kinabalu National Park	75,370.0	Malaysia	Asia	Dudley et al. 2009
Khovsgol Lake	838,070.0	Mongolia	Asia	WWF 2005
Sagarmatha National Park	114,800.0	Nepal	Asia	Dudley et al. 2009; WWF 2005
Peak wilderness park	22,380.0	Sri Lanka	Asia	Dudley et al. 2009
Mihintale	1,000.0	Sri Lanka	Asia	WWF 2005
Mae tae hai	325.0	Thailand	Asia	Junsongduang et al. 2013
Kata Tjuta National Park	132,566.0	Australia	Australasia	Dudley et al. 2009
Deen Maar	453.0	Australia	Australasia	WWF 2005
Tongarino National Park	76,504.0	New Zealand	Australasia	Dudley et al. 2009
Hunstein Range Wildlife Management Areas	220,000.0	Papua New Guinea	Australasia	WWF 2005
Čertova stěna	105.0	Czech republic	Europe	WWF 2005
Gammelstadsviken	435.0	Estonia	Europe	Mallarach et al. 2010
Hiiemägi	25.0	Estonia	Europe	Mallarach et al. 2010
Northern Karelia	350,000.0	Finland	Europe	Dudley et al. 2009
Pyätunturi National Park	4,340.0	Finland	Europe	WWF 2005
Mt Athos	33,563.0	Greece	Europe	WWF 2005
Meteora	375.0	Greece	Europe	WWF 2005
<i>Greveniti – Eftapapado</i>	117.2	Greece	Europe	Tsiakiris et al. 2013
<b><i>Konitsa – Kouri (4S)</i></b>	115.7	Greece	Europe	Tsiakiris et al. 2013
<i>Manasi- Livadi</i>	53.7	Greece	Europe	Tsiakiris et al. 2013
<i>Kalouta – Livadi</i>	51.7	Greece	Europe	Tsiakiris et al. 2013
<b><i>Molista – Trafos (7S)</i></b>	43.3	Greece	Europe	Tsiakiris et al. 2013
<i>Tristeno – Livadi</i>	39.1	Greece	Europe	Tsiakiris et al. 2013
<i>Kalovrisi - Ag. Nikolaos</i>	38.8	Greece	Europe	Tsiakiris et al. 2013
<b><i>Elafotopos-Kri Panagias (2S)</i></b>	29.1	Greece	Europe	Tsiakiris et al. 2013
<i>Aristi – Pournaria</i>	25.1	Greece	Europe	Tsiakiris et al. 2013
<i>Palioseli - Mereáo</i>	24.4	Greece	Europe	Tsiakiris et al. 2013
<i>Kapesovo – Gradista</i>	23.6	Greece	Europe	Tsiakiris et al. 2013
<i>Leptokaria - Ekklesiastiko</i>	23.3	Greece	Europe	Tsiakiris et al. 2013
<b><i>Aidonochori-Aidonolalousa (1S)</i></b>	19.8	Greece	Europe	Tsiakiris et al. 2013
<b><i>Mesovouni-Ag Charálampos</i></b>	17.0	Greece	Europe	Tsiakiris et al. 2013

(6S)				
<i>Iliochori - Proph. Elias</i>	16.6	Greece	Europe	Tsiakiris et al. 2013
<i>Kavasila – Panagia</i>	13.0	Greece	Europe	Tsiakiris et al. 2013
<i>Vrysochori – Livadi</i>	11.4	Greece	Europe	Tsiakiris et al. 2013
<b><i>Mazi – Panagia (5S)</i></b>	10.4	Greece	Europe	Tsiakiris et al. 2013
<b><i>Kato Pedina – Anilia (3S)</i></b>	10.3	Greece	Europe	Tsiakiris et al. 2013
<i>Aetopetra - Ag. Paraskevi</i>	8.6	Greece	Europe	Tsiakiris et al. 2013
<i>Vovousa - Ag. Paraskevi</i>	6.8	Greece	Europe	Tsiakiris et al. 2013
<b><i>Vitsa – Livadakia (8S)</i></b>	4.9	Greece	Europe	Tsiakiris et al. 2013
Mt Carmel	26,600.0	Israel	Europe	Dudley et al. 2009
Benedictine monastery Monte Oliveto Maggiore	500.0	Italy	Europe	Frascarolli 2013
<i>Quercus ilex</i> forest	100.0	Italy	Europe	Frascarolli 2013
Yuganskiy Kanthy	648,700.0	Russia	Europe	Dudley et al. 2009; WWF 2005
Laponian area	940,000.0	Sweden	Europe	Dudley et al. 2009
Coconino National Forest	747,061.0	USA	N. America	Dudley et al. 2009; WWF 2005
Wupatki National Monument	14,267.0	USA	N. America	Dudley et al. 2009; WWF 2005
Lanin National Park	379,000.0	Argentina	S. America	Dudley et al. 2009; WWF 2005
Kaa-lya del Gran Chaco	1,954,875.0	Bolivia	S. America	WWF 2005
Isiboro-sécure	1,200,000.0	Bolivia	S. America	WWF 2005
Sajama National Park	100,230.0	Bolivia	S. America	WWF 2005
Tumucumaque	2,700,000	Brasil	S. America	WWF 2005
Laguna De la cocha	39,000.0	Colombia	S. America	Dudley et al. 2009; WWF 2005
Arenal	12,010.0	Costa Rica	S. America	WWF 2005
Cayapas Mataje	51,300.0	Ecuador	S. America	WWF 2005
Tikal	55,005.0	Guatemala	S. America	WWF 2005
Lagunas de Montebello	60,022.0	Mexico	S. America	WWF 2005
Kuna Park	60,000.0	Panama	S. America	WWF 2005
Lake Titikaka	460,000.0	Peru	S. America	WWF 2005
Machu Pichu	32,592.0	Peru	S. America	Dudley et al. 2009

964

965 **Table F.2.** National Parks (NP) in Greece, UK and the USA used in the analysis and their size  
 966 (in km<sup>2</sup>).

<b>Name</b>	<b>km<sup>2</sup></b>	<b>Country</b>
Lakes Volvi & Koroneia	2,120	Greece
Northern Pindos National Park	1,970	Greece
Rodopi Mountain Range National Park	1,731	Greece
National Park of East Macedonia - Thrace	930	Greece
Lake Kerkini National Park	831	Greece
National Park of Tzoumerka, Peristeri and Arachthos Gorge	820	Greece
Chelmos-Vouraikos National Park	544	Greece
Dadia – Lefkimi – Soufli Forest National Park	428	Greece
Axios-Loudias-Aliakmon National Park	338	Greece

Prespa National Park	327	Greece
Olympus National Park	238	Greece
Evros Delta	200	Greece
Parnitha National Park	180	Greece
Mt Oiti National Park	70	Greece
Parnassos National Park	36	Greece
Ainos National Park	29	Greece
National Park of Schinias – Marathon	14	Greece
Cairngorms	4,528	UK
Lake District	2,362	UK
Yorkshire Dales	2,179	UK
Snowdonia	2,176	UK
Loch Lomond and the Trossachs	1,865	UK
South Downs	1,624	UK
Peak District	1,437	UK
North York Moors	1,434	UK
Brecon Beacons	1,344	UK
Northumberland	1,048	UK
Dartmoor	953	UK
Exmoor	694	UK
Pembrokeshire Coast	621	UK
New Forest	570	UK
Broads	303	UK
Wrangell - St. Elias	53,370	USA
Gates of the Arctic	34,398	USA
Denali	24,398	USA
Katmai	16,552	USA
Lake Clark	16,370	USA
Death Valley	13,759	USA
Glacier Bay	13,275	USA
Yellowstone	8,991	USA
Kobuk Valley	7,082	USA
Everglades	6,105	USA
Grand Canyon	4,927	USA
Glacier	4,102	USA
Olympic	3,731	USA
Sequoia & Kings Canyon	3,495	USA
Big Bend	3,242	USA
Joshua Tree	3,213	USA
Yosemite	3,027	USA
North Cascades	2,768	USA
Kenai Fjords	2,456	USA
Isle Royale	2,314	USA
Great Smoky Mountains	2,110	USA
Canyonlands	1,366	USA
Grand Teton	1,255	USA

Rocky Mountain	1,076	USA
Channel Islands	1,009	USA
Badlands	989	USA
Capitol Reef	979	USA
Mount Ranier	954	USA
Voyageurs	882	USA
Hawaii Volcanoes	880	USA
Shenandoah	794	USA
Crater Lake	741	USA
Biscayne	700	USA
Zion	593	USA
Redwood	439	USA
Great Sand Dunes	433	USA
Lassen Volcanic	430	USA
Petrified Forest	379	USA
Saguaro	370	USA
Guadalupe Mountains	350	USA
Great Basin	312	USA
Arches	309	USA
Theodore Roosevelt	285	USA
Dry Tortugas	262	USA
Mammoth Cave	214	USA
Mesa Verde	211	USA
Acadia	193	USA
Carlsbad Caverns	189	USA
Bryce Canyon	145	USA
Cuyahoga Valley	134	USA
Black Canyon of the Gunnison	123	USA
Haleakala	122	USA
Wind Cave	115	USA
Pinnacles	108	USA
Congaree	90	USA
Virgin Islands	52	USA
American Samoa	43	USA
Hot Springs	22	USA

---

967

968

969 **Appendix G – Ethnographic Research**

970 *Methods*

971 Ethnographic study of the sacred groves of Epirus aiming to describe people's valuation and  
972 perception of different tree species and to identify the sacred natural sites and their  
973 emblematic trees (Stara et al., 2015) started in 2005, involving initially 23 villages in Zagori.  
974 Work resumed in 2012 and covered the rest of Zagori and the adjacent area of Konitsa.

975 Research for this study of the archives of municipalities, the Forestry Service and the Church,  
976 and of local libraries targeted at finding references to the sacred groves and their history, in  
977 general, and of those selected for the study, in particular. Ethnographic research involved  
978 interviews with local people. They were asked about their community's sacred groves, the  
979 reasons for their maintenance, also about their history and the ritual activities, the  
980 supernatural guardians, acceptable and non-acceptable uses, and stories or taboos about  
981 trespassing in the groves (Stara et al., 2016).

### 982 *Management regimes in the sacred groves of Epirus*

983 The groves appear either in the form of protective forests above or close to villages or as  
984 groups of veteran trees that accompany outlying churches ("xoklissia") or icon stands  
985 ("eikonismata", shrines comprising boxes containing icons and an oil lamp that remains lit  
986 most evenings; Stewart, 1993; Nixon, 2006) retaining a protection value through association  
987 with various Orthodox saints (Politis, 1904; Kyriakidou-Nestoros, 1989). Management  
988 regimes in the sacred groves of Epirus vary from strict protection to controlled management.  
989 These regimes are site-dependent and related to the specific reasons for which these groves  
990 were established and maintained, to the type of religious dedication, the perceived personality  
991 of the protector saint or saints, historical circumstances and community needs. When a  
992 church with a sacred grove was founded on the epiphany of the divine, then the protection  
993 was strict. For example, for the grove in Vovoussa in East Zagori, dedicated to the saint Agia  
994 Paraskevi, local people argue that Agia Paraskevi herself chose the exact point, where the  
995 church should be built, through various manifestations, such as repeatedly moving her icon  
996 there. The local cult remains very much alive today linked to that grove and all harvests (e.g.  
997 from hunting, collecting honey from wild bee hives, plants, mushrooms, dead wood etc.) are  
998 still strictly prohibited (Stara et al., 2016). Strict regimes also tended to prevail for protective  
999 forests on very steep slopes (e.g. at Molista, site 7S; Table S1, Fig S3). In contrast, the regime  
1000 in some groves is much more relaxed (e.g. at Mazi, 5S; Table S1, Fig. S3); for instance,  
1001 grazing is allowed without restrictions during certain time periods. Harvesting of branches  
1002 ("shredding") of evergreen tree species during harsh winters (for fuelwood or animal fodder)  
1003 was allowed occasionally by church and community councils, whereas shredding of  
1004 deciduous tree species during early spring was always considered a trespass. In extreme  
1005 cases, controlled management might permit timber harvesting for necessary public works.  
1006 Some tolerance of breaking these rules was extended to members of lower social strata.  
1007 Finally, collective trespassing could be allowed in abnormal situations. For example, in times  
1008 of war or during festivals that are characterized by the ceremonial reversal of social order, the  
1009 collection of dead wood and flammable branches of shrubs for use might be allowed (e.g. at  
1010 Christmas or for carnival bonfires). Several hamlets in the area were consolidated during the  
1011 16<sup>th</sup> to 17th century forming the present villages. Where settlements are abandoned, their  
1012 associated sacred groves are often gradually neglected and only mature trees in the vicinity of  
1013 the church itself are protected (Stara et al., 2016).

1014

1015 *Excommunication*

1016 Excommunication is the exclusion of a person from the Church and the deprivation of its  
1017 mysteries. In the Orthodox Church, it is the heaviest punishment that can be imposed on a  
1018 Christian. From the later Byzantine period, and particularly under the Ottoman rule,  
1019 excommunication was commonly employed for offenses of economic or social character, as  
1020 are cases of theft, rape, livestock stealing, defamation, trespassing etc. It was also used as a  
1021 threat in order to protect trees and other natural resources from trespassing and interference  
1022 (Mihailaris, 2004; Stara et al., 2012).

1023

#### 1024 **Appendix H – Aerial Photos of sacred groves in 1945 and 2007**

1025 The exact borders of the sacred groves studied were identified and mapped using ortho-  
1026 rectified aerial photographs from the year 1945, the oldest complete set of aerial photographs  
1027 of the area (source: Hellenic Military Geographical Service, digital aerial photo 1945 -  
1028 orthorectified) and compared with the most recent set of 2007 (Hellenic Cartographic and  
1029 Cadastral Organisation, digital orthorectified image 2007). The scale for all photographs is  
1030 1:7,500 except for the site 4S (Konitsa) for which it is 1:20,000.

1031 These photos reveal a changing forest landscape, with the forest areas around the groves  
1032 often expanding. Sites 1S, 4S, 5S and 7S were not isolated from the surrounding forest areas  
1033 even in 1945.

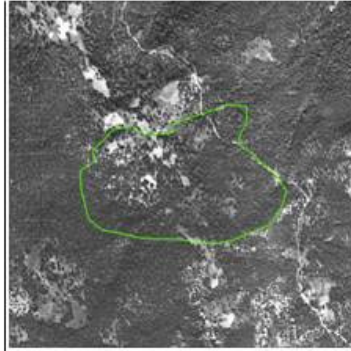
1034 Sites 1S and 5S show little net change in cover but exhibit a pattern of patchy increase or  
1035 decrease in tree cover within the sacred grove. The area surrounding site 5S changed in  
1036 vegetation structure, from a dense scrubland to a young forest as grazing by goats decreased.

1037 In sites 2S, 4S and 7S, forest cover remained high within the sacred grove but with  
1038 substantial changes in the surrounding matrix. Whereas the sacred groves in 1945 were  
1039 largely isolated (surrounded mainly by rangelands, scrublands or wood-pastures with  
1040 minimum tree cover), by 2007, much of this surrounding matrix was covered by trees. This is  
1041 predominantly because of the cessation of grazing that allowed the regrowth of forests. In the  
1042 case of conifer forests (sites 4S, 7S), trees in the sacred groves could have been an important  
1043 seed source, while for the other types, existing shrubs (e.g. around site 2S) can take tree form  
1044 once grazing stops.

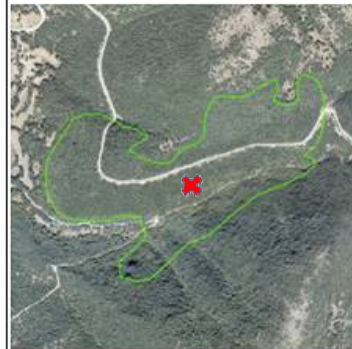
1045 Sites 3S and 6S show a similar trend of a large increase in tree cover between the two dates,  
1046 both inside the sacred grove and in the surrounding matrix.

1047 Around site 8S, there is substantial increase in tree cover in the surrounding matrix, with just  
1048 patchy changes in tree cover inside the sacred grove, as grazing (goats, sheep and cows) is  
1049 still active forming an open extensive wood pasture characterized by scattered trees and  
1050 scrubs.

**1S:  
Aidonohori**



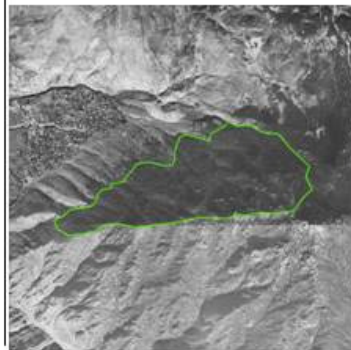
**2S:  
Elafotopos**



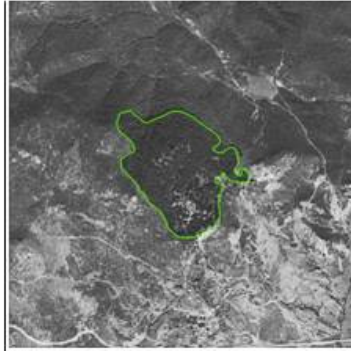
**3S:  
Kato Pedina**



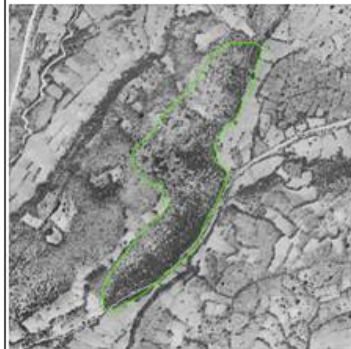
**4S:  
Konitsa**



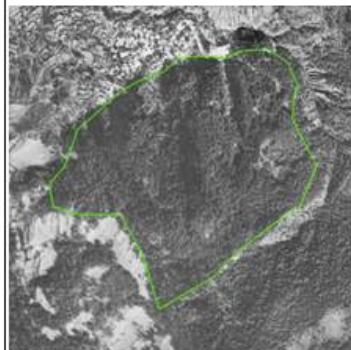
**5S:  
Mazi**



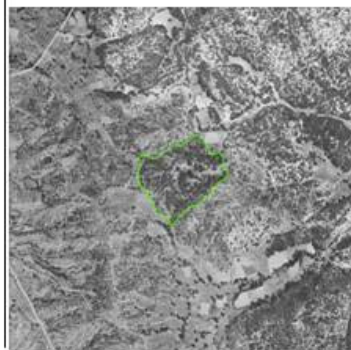
**6S:  
Mesovouni**



**7S:  
Molista**



**8S:  
Vitsa**



1052

1053 **Figure H.1.** Changes in and around sacred groves between 1945 (left panels) and 2007 (right  
1054 panels). Sacred groves are marked by the green line. Lettering inside is from the official state  
1055 agency that issued the 2007 maps. The X's in groves 1S, 2S, 3S and 7S correspond to the  
1056 vantage points from which the photos in figures A1 and A2 were taken.