

SUPPLEMENTARY MATERIALS

Table of Contents

1. Supplementary Figure Legends.....	p. 2
2. Supplementary Figures.....	p. 3
3. Supplementary Tables.....	p. 5

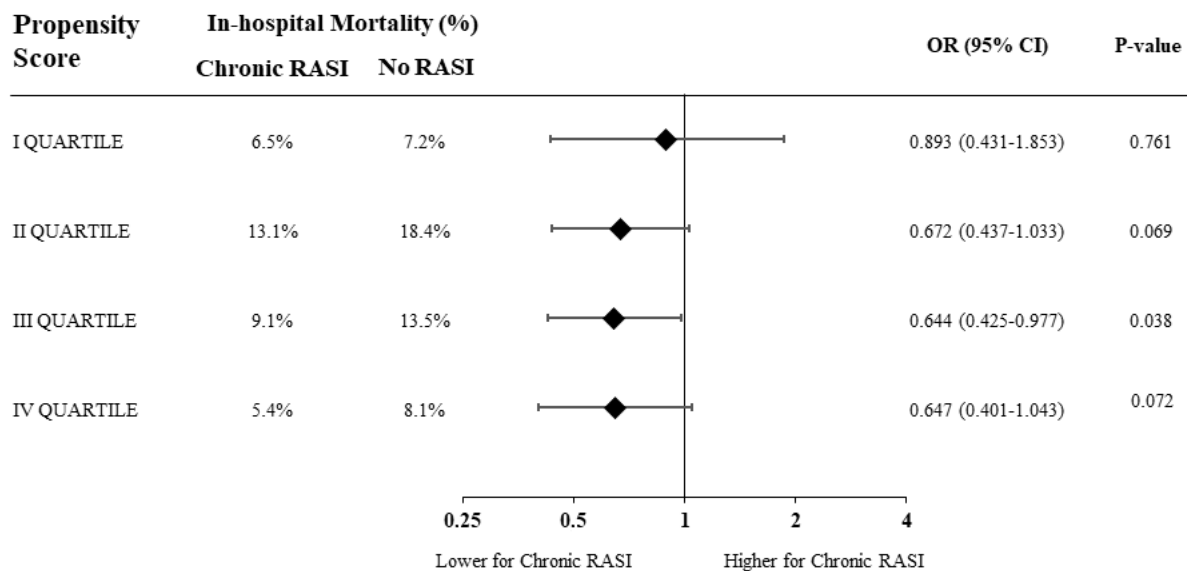
Figure Legends.

Figure 1S. Forest plot shows the impact of chronic RASI therapy on in-hospital (panel A) and 30-day (panel B) mortality in patients grouped according to quartiles of the propensity score.

Figure 2S. Forest plot shows the impact of in-hospital RASI therapy on in-hospital (panel A) and 30-day (panel b) mortality in patients grouped according to quartiles of the propensity score.

Figure 1S

A



B

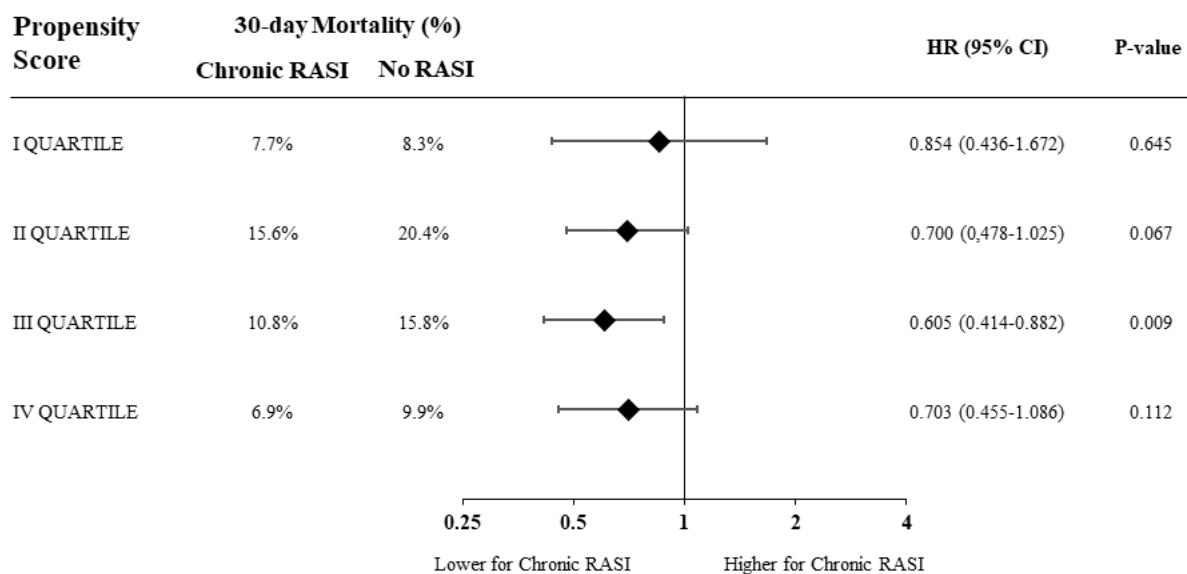
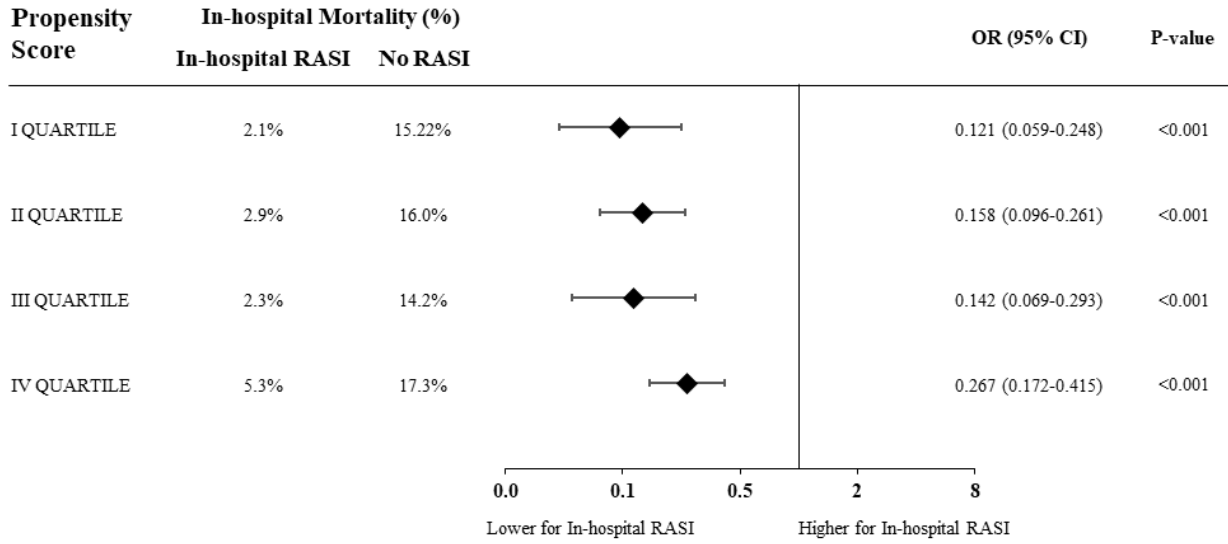


Figure 2S

A



B

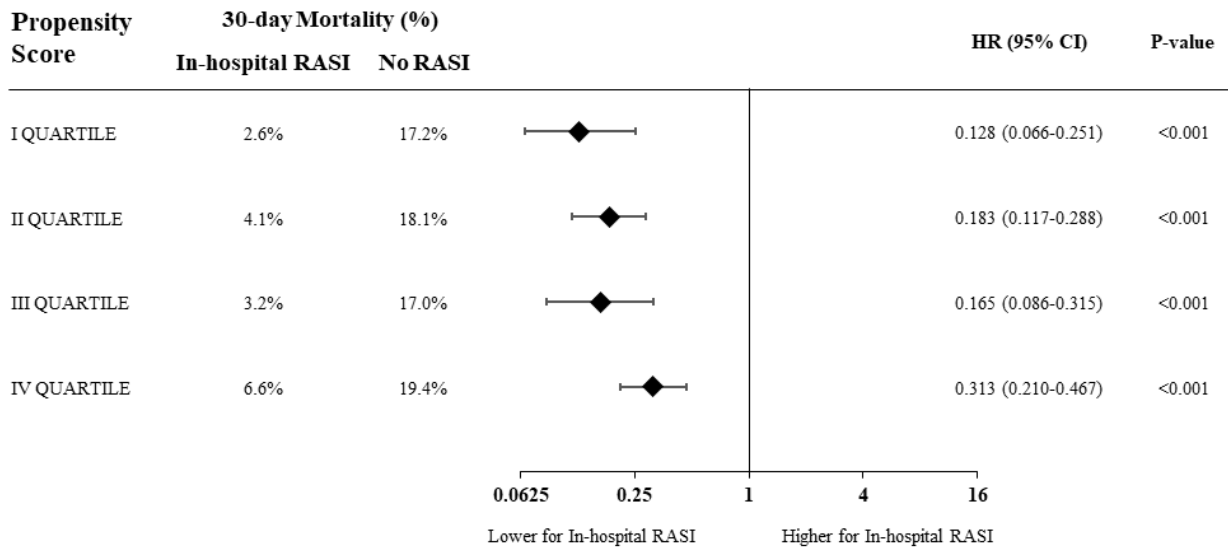


Table 1S.Angiographic and procedural characteristics according to chronic RASI therapy at admission.

	OVERALL POPULATION (N = 3761)			YEAR 2019 (N = 2014)			YEAR 2020 (N = 1747)		
	RASI (n =2049)	No RASI (n = 1712)	P value	RASI (n =1072)	No RASI (n = 942)	P value	RASI (n =977)	No RASI (n = 770)	P value
Radial Access (%)	1447 (70.6)	1271 (74.2)	0.014	747 (69.7)	703 (74.6)	0.014	700 (71.6)	568 (73.8)	0.324
<i>Culprit vessel</i>			0.026			0.554			0.019
Left main – n (%)	42 (2.0)	28 (1.6)		22 (2.1)	15 (1.6)		20 (2.0)	13 (1.7)	
LAD– n (%)	932 (45.5)	833 (48.7)		496 (46.3)	453 (48.1)		436 (44.6)	380 (49.4)	
Circumflex – n (%)	268 (13.1)	225 (13.1)		129 (12.0)	128 (13.6)		139 (14.2)	97 (12.6)	
RCA – n (%)	774 (37.8)	616 (36.0)		410 (38.2)	338 (35.9)		364 (37.3)	278 (36.1)	
Anterolateral Branch – n (%)	6 (0.3)	3 (0.2)		4 (0.4)	2 (0.2)		2 (0.2)	1 (0.1)	
SVG – n (%)	27 (1.3)	7 (0.4)		11 (1.0)	6 (0.6)		16 (1.6)	1 (0.1)	
In-stent Thrombosis – n (%)	139 (6.8)	42 (2.5)	<0.001	70 (6.5)	26 (2.8)	<0.001	69 (7.1)	16 (2.1)	<0.001
Multivessel disease – n (%)	1183 (57.7)	996 (58.2)	0.474	600 (56.0)	548 (58.2)	0.014	583 (59.7)	448 (58.2)	0.420
Preprocedural TIMI 0 flow – n (%)	1310 (63.9)	1127 (65.8)	0.225	693 (64.6)	610 (64.8)	0.959	617 (63.2)	517 (67.1)	0.083
Thrombectomy– n (%)	293 (14.3)	267 (15.6)	0.266	151 (14.1)	148 (15.7)	0.306	142 (14.5)	119 (15.5)	0.592
Stenting– n (%)	1847 (90.1)	1556 (90.9)	0.437	968 (90.3)	862 (91.5)	0.347	879 (90.0)	694 (90.1)	0.911
Drug-eluting stent– n (%)	1790 (87.4)	1489 (87.0)	0.725	928 (86.6)	813 (86.3)	0.864	862 (88.2)	676 (87.8)	0.780
Postprocedural TIMI 3 Flow – n (%)	1852 (90.4)	1535 (89.7)	0.460	973 (90.8)	856 (90.9)	0.935	879 (90.0)	679 (88.2)	0.232

Gp IIb-IIIa inhibitors/Cangrelor – n (%)	401 (19.6)	305 (17.8)	0.170	205 (19.1)	167 (17.7)	0.421	196 (20.1)	138 (17.9)	0.259
Bivalirudin– n (%)	4 (0.2)	3 (0.2)	0.887	4 (0.4)	3 (0.3)	0.835	-	-	-
Mechanical support – n (%)	80 (3.9)	87 (5.1)	0.081	37 (3.5)	41 (4.4)	0.296	43 (4.4)	46 (6.0)	0.138
<i>Additional PCI</i>			0.103			0.060	f		0.706
During the index procedure – n (%)	215 (10.5)	145 (8.5)		107 (10.0)	68 (7.2)		108 (11.1)	77 (10.0)	
Staged– n (%)	194 (9.5)	172 (10.0)		99 (9.2)	101 (10.7)		95 (9.7)	71 (9.2)	
DAPT therapy – n (%)	2027 (98.9)	1690 (98.7)	0.548	1063 (99.2)	930 (98.7)	0.338	964 (98.7)	760 (98.7)	0.954

TIMI = Thrombolysis in Myocardial Infarction; DAPT = Dual Antiplatelet Therapy

Table 2S. Baseline demographic and clinical characteristics according to in-hospital RASI therapy.

	OVERALL POPULATION (N = 3812)			YEAR 2019 (N = 2038)			YEAR 2020 (N = 1774)		
	RASI (n =2049)	No RASI (n = 1763)	P value	RASI (n =1034)	No RASI (n = 1004)	P value	RASI (n =1015)	No RASI (n = 759)	P value
Radial Access (%)	1631 (79.6)	1109 (62.9)	<0.001	823 (79.6)	638 (63.5)	<0.001	808 (79.6)	471 (62.1)	<0.001
<i>Culprit vessel</i>			<0.001			0.308			<0.001
Left main – n (%)	22 (1.1)	49 (2.8)		15 (1.5)	22 (2.2)		7 (0.7)	27 (3.6)	
Left Anterior Descending Artery – n (%)	975 (47.6)	805 (45.7)		498 (48.2)	459 (45.7)		477 (47.0)	346 (45.6)	
Circumflex – n (%)	289 (14.1)	214 (12.1)		126 (12.2)	135 (13.4)		163 (16.1)	79 (10.4)	
Right Coronary Artery – n (%)	736 (35.9)	679 (38.5)		380 (36.8)	380 (37.8)		356 (35.1)	299 (39.4)	
Anterolateral Branch – n (%)	7 (0.3)	2 (0.1)		5 (0.5)	1 (0.1)		2 (0.2)	1 (0.1)	
SVG – n (%)	20 (1.0)	14 (0.8)		10 (1.0)	7 (0.7)		10 (1.0)	7 (0.9)	
In-stentThrombosis – n (%)	116 (5.7)	71 (4.0)	0.020	58 (5.6)	41 (4.1)	0.109	58 (5.7)	30 (4.0)	0.091
Multivesseldisease – n (%)	1164 (56.8)	1031 (58.5)	0.049	571 (55.2)	583 (58.1)	0.022	593 (58.4)	448 (59.0)	0.760
Preprocedural TIMI 0 flow – n (%)	1322 (64.5)	1146 (65.0)	0.755	672 (65.0)	644 (64.1)	0.689	650 (64.0)	502 (66.1)	0.359
Thrombectomy– n (%)	344 (16.8)	216 (12.3)	<0.001	177 (17.1)	122 (12.2)	0.002	167 (16.5)	94 (12.4)	0.017
Stenting– n (%)	1864 (91.0)	1582 (89.7)	0.196	943 (91.2)	906 (90.2)	0.455	921 (90.7)	676 (89.1)	0.244
Drug-eluting stent– n (%)	1851 (90.3)	1470 (83.4)	<0.001	931 (90.0)	829 (82.6)	<0.001	920 (90.6)	641 (84.5)	<0.001
Postprocedural TIMI 3 Flow – n (%)	1890 (92.2)	1547 (87.7)	<0.001	956 (92.5)	896 (89.2)	0.012	934 (92.0)	651 (85.8)	<0.001

Gp IIb-IIIa inhibitors/Cangrelor – n (%)	393 (19.2)	319 (18.1)	0.391	188 (18.2)	185 (18.4)	0.887	205 (20.2)	134 (17.7)	0.178
Bivalirudin– n (%)	3 (0.1)	8 (0.5)	0.078	3 (0.3)	6 (0.6)	0.295	0 (0.0)	2 (0.3)	0.102
Mechanical support – n (%)	66 (3.2)	101 (5.7)	<0.001	28 (2.7)	50 (5.0)	0.008	38 (3.7)	51 (6.7)	0.005
<i>Additional PCI</i>			0.119			0.094			0.228
During the index procedure – n (%)	209 (10.2)	183 (10.4)		87 (8.4)	104 (10.4)		122 (12.0)	79 (10.4)	
Staged– n (%)	216 (10.5)	151 (8.6)		113 (10.9)	87 (8.7)		103 (10.1)	64 (8.4)	
DAPT therapy – n (%)	2034 (99.3)	1734 (98.4)	0.009	1031 (99.7)	986 (98.2)	0.001	1003 (98.8)	748 (98.6)	0.623

TIMI = Thrombolysis in Myocardial Infarction; DAPT = Dual Antiplatelet Therapy