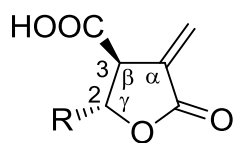


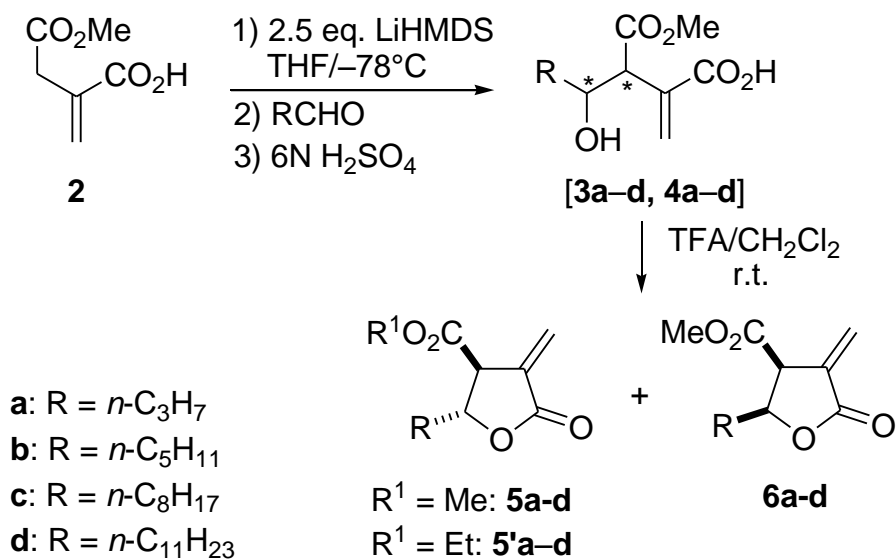
## Figures and Schemes



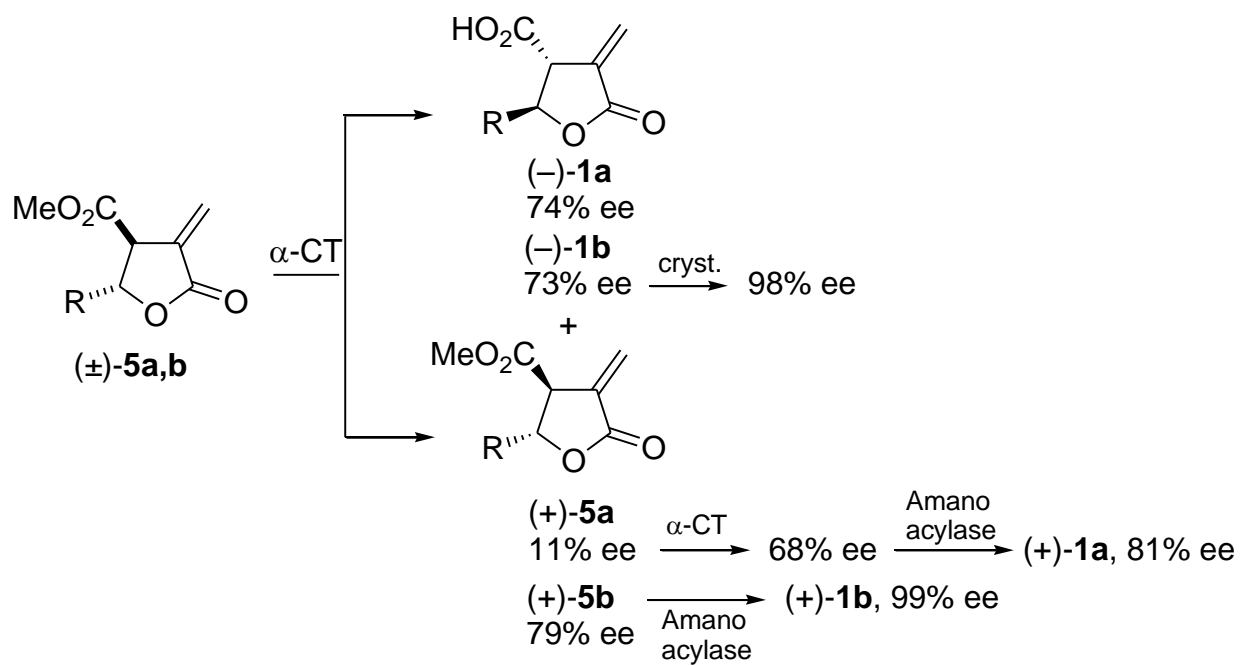
(+)-(2*R*,3*S*)-1

R	Name
<b>a</b> <i>n</i> -C <sub>3</sub> H <sub>7</sub>	MB-3
<b>b</b> <i>n</i> -C <sub>5</sub> H <sub>11</sub>	Methylenolactocin
<b>c</b> <i>n</i> -C <sub>8</sub> H <sub>17</sub>	C75
<b>d</b> <i>n</i> -C <sub>11</sub> H <sub>23</sub>	Nephrasterinic acid
<b>e</b> <i>n</i> -C <sub>13</sub> H <sub>27</sub>	Protolichesterinic acid

**Figure 1.** Examples of  $\alpha$ -methylene-paraconic acids.



**Scheme 1.** Synthesis of racemic substrates.



**Scheme 2.** Enzymatic resolution of lactonic esters **5a,b**.