

# Planck intermediate results. XX. Comparison of polarized thermal emission from Galactic dust with simulations of MHD turbulence<sup>★</sup>

Planck Collaboration: P. A. R. Ade<sup>71</sup>, N. Aghanim<sup>50</sup>, D. Alina<sup>76,9</sup>, M. I. R. Alves<sup>50</sup>, G. Aniano<sup>50</sup>, C. Armitage-Caplan<sup>74</sup>, M. Arnaud<sup>61</sup>, D. Arzoumanian<sup>50</sup>, M. Ashdown<sup>58,5</sup>, F. Atrio-Barandela<sup>16</sup>, J. Aumont<sup>50</sup>, C. Baccigalupi<sup>70</sup>, A. J. Banday<sup>76,9</sup>, R. B. Barreiro<sup>55</sup>, E. Battaner<sup>77,78</sup>, K. Benabed<sup>51,75</sup>, A. Benoit-Lévy<sup>22,51,75</sup>, J.-P. Bernard<sup>76,9</sup>, M. Bersanelli<sup>31,44</sup>, P. Bielewicz<sup>76,9,70</sup>, J. R. Bond<sup>8</sup>, J. Borrill<sup>12,72</sup>, F. R. Bouchet<sup>51,75</sup>, F. Boulanger<sup>50</sup>, A. Bracco<sup>50</sup>, C. Burigana<sup>43,29</sup>, J.-F. Cardoso<sup>62,1,51</sup>, A. Catalano<sup>63,60</sup>, A. Chamballu<sup>61,113,50</sup>, H. C. Chiang<sup>25,6</sup>, P. R. Christensen<sup>68,34</sup>, S. Colombi<sup>51,75</sup>, L. P. L. Colombo<sup>21,56</sup>, C. Combet<sup>63</sup>, F. Couchot<sup>59</sup>, A. Coulais<sup>60</sup>, B. P. Crill<sup>56,69</sup>, A. Curto<sup>5,55</sup>, F. Cuttaia<sup>43</sup>, L. Danese<sup>70</sup>, R. D. Davies<sup>57</sup>, R. J. Davis<sup>57</sup>, P. de Bernardis<sup>30</sup>, A. de Rosa<sup>43</sup>, G. de Zotti<sup>40,70</sup>, J. Delabrouille<sup>1</sup>, C. Dickinson<sup>57</sup>, J. M. Diego<sup>55</sup>, S. Donzelli<sup>44</sup>, O. Doré<sup>56,10</sup>, M. Douspis<sup>50</sup>, X. Dupac<sup>36</sup>, G. Efstathiou<sup>53</sup>, T. A. Enßlin<sup>66</sup>, H. K. Eriksen<sup>54</sup>, E. Falgarone<sup>60</sup>, L. Fanciullo<sup>50</sup>, K. Ferrière<sup>76,9</sup>, F. Finelli<sup>43,45</sup>, O. Forni<sup>76,9</sup>, M. Frailis<sup>42</sup>, A. A. Fraisse<sup>25</sup>, E. Franceschi<sup>43</sup>, S. Galeotta<sup>42</sup>, K. Ganga<sup>1</sup>, T. Ghosh<sup>50</sup>, M. Giard<sup>76,9</sup>, Y. Giraud-Héraud<sup>1</sup>, J. González-Nuevo<sup>55,70</sup>, K. M. Górski<sup>56,79</sup>, A. Gregorio<sup>32,42,47</sup>, A. Gruppuso<sup>43</sup>, V. Guillet<sup>50</sup>, F. K. Hansen<sup>54</sup>, D. L. Harrison<sup>53,58</sup>, G. Helou<sup>10</sup>, C. Hernández-Monteagudo<sup>11,66</sup>, S. R. Hildebrand<sup>10</sup>, E. Hivon<sup>51,75</sup>, M. Hobson<sup>5</sup>, W. A. Holmes<sup>56</sup>, A. Hornstrup<sup>14</sup>, K. M. Huffenberger<sup>23</sup>, A. H. Jaffe<sup>48</sup>, T. R. Jaffe<sup>76,9</sup>, W. C. Jones<sup>25</sup>, M. Juvela<sup>24</sup>, E. Keihänen<sup>24</sup>, R. Keskitalo<sup>12</sup>, T. S. Kisner<sup>65</sup>, R. Kneissl<sup>35,7</sup>, J. Knoche<sup>66</sup>, M. Kunz<sup>15,50,2</sup>, H. Kurki-Suonio<sup>24,38</sup>, G. Lagache<sup>50</sup>, J.-M. Lamarre<sup>60</sup>, A. Lasenby<sup>5,58</sup>, C. R. Lawrence<sup>56</sup>, R. Leonardi<sup>36</sup>, F. Levrier<sup>60,★★</sup>, M. Liguori<sup>28</sup>, P. B. Lilje<sup>54</sup>, M. Linden-Vørnle<sup>14</sup>, M. López-Cañiego<sup>55</sup>, P. M. Lubin<sup>26</sup>, J. F. Macías-Pérez<sup>63</sup>, D. Maino<sup>31,44</sup>, N. Mandolesi<sup>43,4,29</sup>, M. Maris<sup>42</sup>, D. J. Marshall<sup>61</sup>, P. G. Martin<sup>8</sup>, E. Martínez-González<sup>55</sup>, S. Masi<sup>30</sup>, S. Matarrese<sup>28</sup>, P. Mazzotta<sup>33</sup>, A. Melchiorri<sup>30,46</sup>, L. Mendes<sup>36</sup>, A. Mennella<sup>31,44</sup>, M. Migliaccio<sup>53,58</sup>, M.-A. Miville-Deschênes<sup>50,8</sup>, A. Moneti<sup>51</sup>, L. Montier<sup>76,9</sup>, G. Morgante<sup>43</sup>, D. Mortlock<sup>48</sup>, D. Munshi<sup>71</sup>, J. A. Murphy<sup>67</sup>, P. Naselsky<sup>68,34</sup>, F. Nati<sup>30</sup>, P. Natoli<sup>29,3,43</sup>, C. B. Netterfield<sup>18</sup>, F. Noviello<sup>57</sup>, D. Novikov<sup>48</sup>, I. Novikov<sup>68</sup>, C. A. Oxborrow<sup>14</sup>, L. Pagano<sup>30,46</sup>, F. Pajot<sup>50</sup>, D. Paoletti<sup>43,45</sup>, F. Pasian<sup>42</sup>, V.-M. Pelkonen<sup>49</sup>, O. Perdereau<sup>59</sup>, L. Perotto<sup>63</sup>, F. Perrotta<sup>70</sup>, F. Piacentini<sup>30</sup>, M. Piat<sup>1</sup>, D. Pietrobon<sup>56</sup>, S. Plaszczynski<sup>59</sup>, E. Pointecouteau<sup>76,9</sup>, G. Polenta<sup>3,41</sup>, L. Popa<sup>52</sup>, G. W. Pratt<sup>61</sup>, S. Prunet<sup>51,75</sup>, J.-L. Puget<sup>50</sup>, J. P. Rachen<sup>19,66</sup>, M. Reinecke<sup>66</sup>, M. Remazeilles<sup>57,50,1</sup>, C. Renault<sup>63</sup>, S. Ricciardi<sup>43</sup>, T. Riller<sup>66</sup>, I. Ristorcelli<sup>76,9</sup>, G. Rocha<sup>56,10</sup>, C. Rosset<sup>1</sup>, G. Roudier<sup>1,60,56</sup>, B. Rusholme<sup>49</sup>, M. Sandri<sup>43</sup>, D. Scott<sup>20</sup>, J. D. Soler<sup>50</sup>, L. D. Spencer<sup>71</sup>, V. Stolyarov<sup>5,58,73</sup>, R. Stompor<sup>1</sup>, R. Sudiwala<sup>71</sup>, D. Sutton<sup>53,58</sup>, A.-S. Suur-Uski<sup>24,38</sup>, J.-F. Sygnet<sup>51</sup>, J. A. Tauber<sup>37</sup>, L. Terenzi<sup>43</sup>, L. Toffolatti<sup>17,55</sup>, M. Tomasi<sup>31,44</sup>, M. Tristram<sup>59</sup>, M. Tucci<sup>15,59</sup>, G. Umata<sup>39</sup>, L. Valenziano<sup>43</sup>, J. Valiviita<sup>24,38</sup>, B. Van Tent<sup>64</sup>, P. Vielva<sup>55</sup>, F. Villa<sup>43</sup>, L. A. Wade<sup>56</sup>, B. D. Wandelt<sup>51,75,27</sup>, and A. Zonca<sup>26</sup>

(Affiliations can be found after the references)

Received 28 April 2014 / Accepted 4 September 2014

## ABSTRACT

Polarized emission observed by *Planck* HFI at 353 GHz towards a sample of nearby fields is presented, focusing on the statistics of polarization fractions  $p$  and angles  $\psi$ . The polarization fractions and column densities in these nearby fields are representative of the range of values obtained over the whole sky. We find that: (i) the largest polarization fractions are reached in the most diffuse fields; (ii) the maximum polarization fraction  $p_{\max}$  decreases with column density  $N_{\text{H}}$  in the more opaque fields with  $N_{\text{H}} > 10^{21} \text{ cm}^{-2}$ ; and (iii) the polarization fraction along a given line of sight is correlated with the local spatial coherence of the polarization angle. These observations are compared to polarized emission maps computed in simulations of anisotropic magnetohydrodynamical turbulence in which we assume a uniform intrinsic polarization fraction of the dust grains. We find that an estimate of this parameter may be recovered from the maximum polarization fraction  $p_{\max}$  in diffuse regions where the magnetic field is ordered on large scales and perpendicular to the line of sight. This emphasizes the impact of anisotropies of the magnetic field on the emerging polarization signal. The decrease of the maximum polarization fraction with column density in nearby molecular clouds is well reproduced in the simulations, indicating that it is essentially due to the turbulent structure of the magnetic field: an accumulation of variously polarized structures along the line of sight leads to such an anti-correlation. In the simulations, polarization fractions are also found to anti-correlate with the angle dispersion function  $\mathcal{S}$ . However, the dispersion of the polarization angle for a given polarization fraction is found to be larger in the simulations than in the observations, suggesting a shortcoming in the physical content of these numerical models. In summary, we find that the turbulent structure of the magnetic field is able to reproduce the main statistical properties of the dust polarization as observed in a variety of nearby clouds, dense cores excluded, and that the large-scale field orientation with respect to the line of sight plays a major role in the quantitative analysis of these statistical properties.

**Key words.** ISM: general – dust, extinction – ISM: magnetic fields – ISM: clouds – infrared: ISM – submillimeter: ISM

## 1. Introduction

*Planck*<sup>1</sup> (Tauber et al. 2010; Planck Collaboration I 2011) is the third generation space-mission aimed at mapping the

<sup>★</sup> Appendices are available in electronic form at <http://www.aanda.org>

<sup>★★</sup> Corresponding author: F. Levrier,  
e-mail: francois.levrier@ens.fr

<sup>1</sup> *Planck* (<http://www.esa.int/Planck>) is a project of the European Space Agency (ESA) with instruments provided by two scientific consortia funded by ESA member states (in particular the lead countries France and Italy), with contributions from NASA (USA) and

anisotropies of the cosmic microwave background (CMB). With its unprecedented sensitivity and large spectral coverage (nine channels from 30 GHz to 857 GHz) it has provided exquisite maps of that relic radiation (Planck Collaboration I 2014). With its polarimetric capabilities up to 353 GHz, *Planck* will also provide clues on the physics of the early Universe, by measuring the CMB polarization. However, dominant foreground emission is also partially polarized, masking the primordial signal. In the

telescope reflectors provided by a collaboration between ESA and a scientific consortium led and funded by Denmark.

range of the High Frequency Instrument (HFI, [Lamarre et al. 2010](#)), from 100 GHz to 857 GHz, the main contribution to the observed radiation, besides point sources, is thermal emission from dust grains.

The angular momenta of aspherical and spinning grains tend to align with the local magnetic field, although the details of how this alignment proceeds are still the subject of study: see for instance [Andersson \(2012\)](#) for a review on observational constraints regarding grain alignment with respect to current dust models. Submillimetre thermal dust emission is therefore polarized and represents a powerful tool to study interstellar magnetic fields and dust properties. Ideally, we would like to know where in interstellar clouds, and with what efficiency the dust emission and extinction is polarized. This would allow us to use polarization data to infer the spatial structure of the magnetic field. There is an extensive literature on this topic based on observations of starlight polarization, which have been interpreted from two different viewpoints, i.e., grain alignment and magnetic field structure, without achieving a clear understanding of the respective roles of these processes in accounting for variations of polarization across the sky. A number of papers (e.g., [Pereyra & Magalhães 2007](#); [Alves et al. 2008](#); [Marchwinski et al. 2012](#)) use the data to infer the magnetic field strength using the Chandrasekhar-Fermi method ([Chandrasekhar & Fermi 1953](#)). Other papers focus on the observed decrease of polarization fraction  $p$  with  $N_{\text{H}}$  to interpret the data as a decrease of the dust alignment efficiency in dense clouds ([Lazarian et al. 1997](#); [Whittet et al. 2008](#); [Chapman et al. 2011](#)).

Magnetohydrodynamical (MHD) simulations provide a theoretical framework to consider both aspects in the interpretation of polarization datasets. [Ostriker et al. \(2001\)](#) were among the first to present simulated polarization maps from MHD simulations, for comparison with data and to study the field structure beyond the simple Chandrasekhar-Fermi method. [Falceta-Gonçalves et al. \(2008\)](#) used a similar technique to study the effect of the Alfvénic Mach number, while [Pelkonen et al. \(2009\)](#) added to this approach the modelling of the alignment process by radiative torques ([Hoang & Lazarian 2008](#)).

*Planck* has mapped the polarized dust emission with great sensitivity and resolution ([Planck Collaboration Int. XIX 2014](#)), allowing us to characterize spatial variations of dust polarization and compare data with MHD simulations with unprecedented statistics. This paper is the second in a series of four dealing with a first presentation of the *Planck* polarized thermal emission from Galactic dust. The other three are the following: [Planck Collaboration Int. XIX \(2014\)](#) describes the polarized dust emission at 353 GHz as seen by *Planck* over the whole sky and shows in particular that the maximum polarization fraction  $p_{\text{max}}$  at a given total gas column density  $N_{\text{H}}$  decreases as  $N_{\text{H}}$  increases, and that there is an anti-correlation between polarization fractions  $p$  and angle dispersion functions  $\mathcal{S}$ , an effect which has also been seen with starlight polarization data ([Hatano et al. 2013](#)). [Planck Collaboration Int. XXI \(2014\)](#) compares polarized thermal emission from dust at 353 GHz to polarization in extinction in the visible towards a sample of stars. Finally, [Planck Collaboration Int. XXII \(2014\)](#) discusses the variation of polarized thermal emission from dust with frequency, from 70 to 353 GHz. Both [Planck Collaboration Int. XXI \(2014\)](#) and [Planck Collaboration Int. XXII \(2014\)](#) aim at providing constraints for models of interstellar dust.

In this paper, we use *Planck* polarization data at 353 GHz to present statistics of polarization fractions and angles in nearby interstellar clouds seen outside the Galactic plane. We then compare the *Planck* results with simulated observations of polarized

thermal dust emission at 353 GHz built from a three-dimensional MHD simulation of the formation of a molecular cloud within colliding flows ([Hennebelle et al. 2008](#)).

In these simulated observations, we work under the assumption that the optical properties and the intrinsic polarization fraction of dust grains are constant. At this stage we do not aim at testing models of grain alignment. In this picture, it is expected that the polarization fraction should be maximal when the magnetic field is in the plane of the sky and should, in this case, yield valuable information on the intrinsic polarization fraction. That is why we first focus on the decrease of the maximum value of  $p$ , rather than its mean or median values, with increasing column density. We then consider the correlation between polarization fractions and local measures of the dispersion in polarization angles, as it is expected that larger angular dispersions should lower the observed polarization fraction.

The paper is organized as follows. Section 2 describes the *Planck* data used and the statistics drawn from them in the selected regions. Section 3 presents simulated polarized emission observations based on an MHD simulation of interstellar turbulence and compares their statistical properties with those found towards similar fields in the *Planck* data. Conclusions are given in Sect. 4. Appendix A presents supplementary figures, and Appendix B details the derivation of the equations yielding the Stokes parameters for dust emission.

## 2. *Planck* observations of polarized dust emission

### 2.1. *Planck* all-sky data post-processing

The data processing of *Planck* HFI is presented in [Planck Collaboration VI \(2014\)](#), [Planck Collaboration VII \(2014\)](#), [Planck Collaboration VIII \(2014\)](#), [Planck Collaboration IX \(2014\)](#), and [Planck Collaboration X \(2014\)](#). The specifics of the data processing in terms of polarization are given in [Planck Collaboration Int. XIX \(2014\)](#). We use the same *Planck* data set as that presented in [Planck Collaboration Int. XIX \(2014\)](#), i.e., full 5-survey HFI mission data for Stokes  $I$ ,  $Q$ , and  $U$  at 353 GHz (which is the *Planck* channel offering the best signal-to-noise ratio for dust polarization) from the “DR3” internal data release. Bandpass mismatch between individual elements of a pair of polarization sensitive bolometers (PSBs) is corrected using in-flight measurements for the dust emission but not for the negligible CO  $J = 3 \rightarrow 2$  emission ([Planck Collaboration IX 2014](#)). From the total intensity map we subtract the offset  $I_{\text{offset}} = 0.0887 \text{ MJy sr}^{-1}$  to set the Galactic zero level at 353 GHz ([Planck Collaboration XI 2014](#)). Note that this value includes the cosmic infrared background (CIB) monopole and is slightly different from the one given in [Planck Collaboration XI \(2014\)](#), as the maps are not the same (full mission vs. nominal mission). We do not correct for zodiacal light emission, nor for the residual dipole identified by [Planck Collaboration XI \(2014\)](#) at 353 GHz. CMB and CIB fluctuations are ignored, since the regions selected in this study are outside the CMB-CIB mask described in [Planck Collaboration Int. XIX \(2014\)](#), so the polarized emission there is dominated by the dust.

The *Planck* polarization and intensity data that we use in this analysis have been generated in exactly the same manner as the data publicly released in March 2013 and described in [Planck Collaboration I \(2014\)](#) and associated papers. Note, however, that the publicly available data include only temperature maps based on the first two surveys. [Planck Collaboration XVI \(2014\)](#) shows the very good consistency of cosmological models

derived from intensity only with polarization data at small scales (high CMB multipoles). However, as detailed in [Planck Collaboration VI \(2014\)](#); see their Fig. 27), the 2013 polarization data are known to be affected by systematic effects at low multipoles which were not yet fully corrected, and thus these data were not used for cosmology<sup>2</sup>. We have been careful to check that the Galactic science results in this paper are robust with respect to these systematics<sup>3</sup>.

We focus in this paper on the polarization fractions  $p$  and the polarization angles  $\psi$  derived from the Stokes  $I$ ,  $Q$ , and  $U$  maps obtained by *Planck* at 353 GHz and at an angular resolution of  $15'$ . In the absence of noise,  $p$  and  $\psi$  are defined by

$$p = \frac{\sqrt{Q^2 + U^2}}{I}, \quad (1)$$

and

$$\psi = \frac{1}{2} \text{atan}(U, Q). \quad (2)$$

Note that  $\psi$  is here defined in the HEALPix<sup>4</sup> convention ([Górski et al. 2005](#)), which means that angles are counted positively clockwise from the north-south direction. Working in that convention instead of the IAU one, which is anti-clockwise ([Planck Collaboration Int. XXI 2014](#)), has however no impact on the results presented here. Additionally, since we work on ratios of Stokes parameters, no colour correction is necessary.

When (possibly correlated) noise affects the Stokes parameters, the polarization fraction computed directly using Eq. (1) is biased. We call this one the “naïve” estimator of  $p$ , but various methods have been devised to correct for the bias ([Montier et al. 2014a](#)), and their respective efficiencies are compared in [Montier et al. \(2014b\)](#). Among them is the modified asymptotic (MAS) estimator introduced by [Plaszczynski et al. \(2014\)](#), which is computed from the naive estimator and the noise covariance matrix pertaining to  $Q$  and  $U$ . Another estimator of the polarization fraction and angle is the Bayesian estimator described in [Montier et al. \(2014a\)](#) and [Planck Collaboration Int. XIX \(2014\)](#), which has the advantage of taking into account the full noise covariance matrix in  $I$ ,  $Q$  and  $U$ , and also taking into account the uncertainty on the zero-level offset for  $I$ . In the rest of this paper, except where noted, the maps of polarization fraction  $p$  and polarization angle  $\psi$  at 353 GHz refer to these Bayesian estimators. The Bayesian method also provides maps of the polarization fraction and angle uncertainties,  $\sigma_p$  and  $\sigma_\psi$ .

For the total hydrogen column density map  $N_{\text{H}}$ , we use a conversion from the optical depth at 353 GHz,  $\tau_{353}$ , derived from [Planck Collaboration XI \(2014\)](#): for  $N_{\text{H}} \gtrsim 2 \times 10^{21} \text{ cm}^{-2}$ , the dust opacity is approximately constant, with  $\sigma_{353} = \tau_{353}/N_{\text{H}} \approx 1.2 \times 10^{-26} \text{ cm}^2$ . We are aware that this conversion is crude, with possible variations in dust opacity of the order of 20% to 25%, but our findings do not critically depend on that calibration.

All of the maps used in this study have a HEALPix resolution  $N_{\text{side}} = 1024$ .

<sup>2</sup> The full mission maps for intensity as well as for polarization will be made publicly available in the end of 2014.

<sup>3</sup> The error-bars we quote include uncertainties associated with residual systematics as estimated by repeating the analysis on different subsets of the data. We have also checked our data analysis on the latest version of the maps available to the consortium to check that the results we find are consistent within the error-bars quoted in this paper.

<sup>4</sup> <http://healpix.jpl.nasa.gov>. See in particular the latest version of the HEALPix primer, available at <http://healpix.jpl.nasa.gov/pdf/intro.pdf>

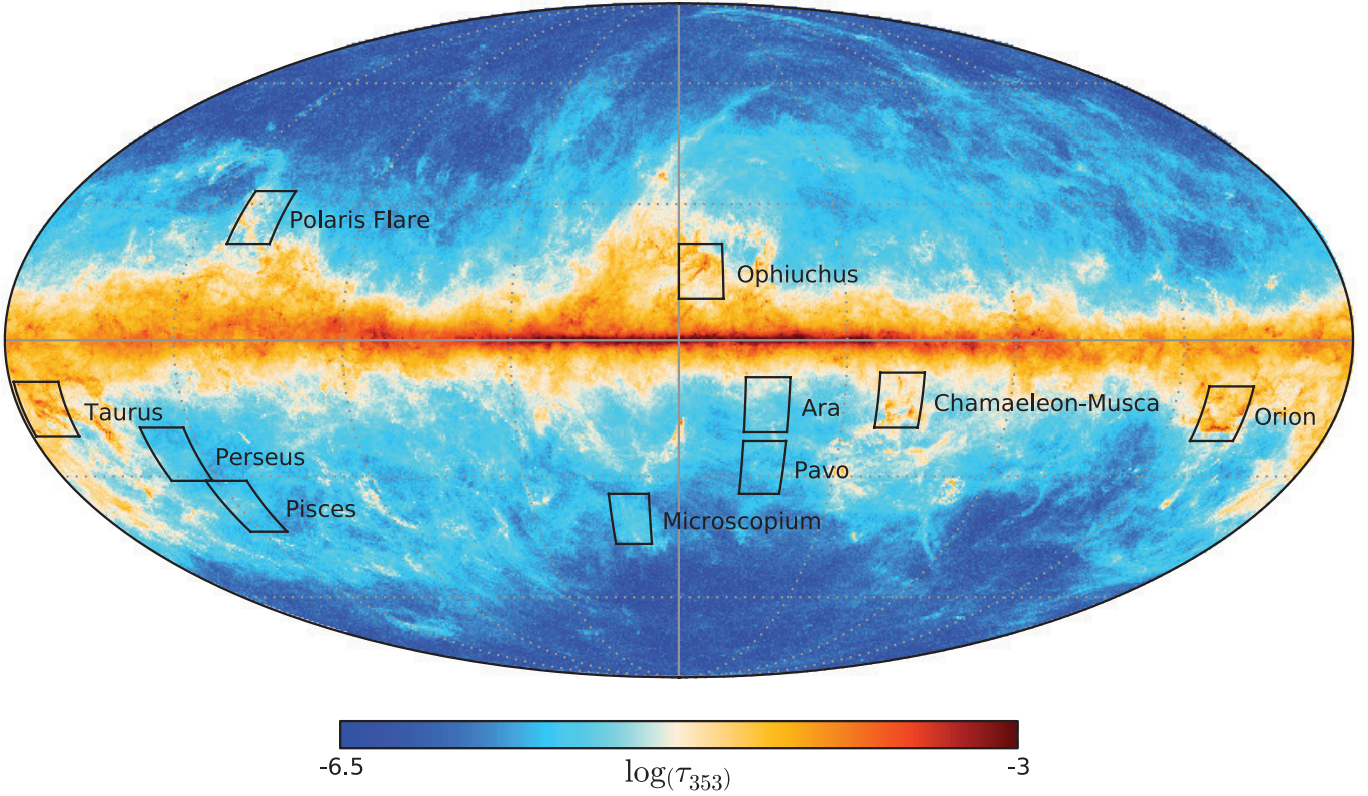
## 2.2. Overview of the statistics of polarized emission in various fields

We have selected ten regions, each  $12^\circ \times 12^\circ$  in size, that are highlighted in Fig. 1 and whose locations are given in Table 1. These are the same as some of the individual regions mentioned in [Planck Collaboration Int. XIX \(2014\)](#). All of these fields are outside the Galactic plane and probe nearby interstellar material, but they exhibit very different physical conditions, from the diffuse, turbulent ISM with little to no star-forming activity (Polaris Flare), to self-gravitating, star-forming clouds (Orion). They also differ in terms of polarized emission. Some diffuse regions have high polarization fractions (e.g., Pavo), while some have low polarization fractions (e.g., Polaris Flare). This variety of conditions in terms of polarization fraction and gas content is emphasized in Fig. 2, which shows the distribution of  $p$  and  $N_{\text{H}}$  in these regions, compared with the large-scale distribution shown in [Planck Collaboration Int. XIX \(2014\)](#). The latter is represented by its upper and lower envelopes, computed from the 0.01% and 99.99% percentiles of the  $p$  distribution within each bin in column density. All the envelopes of two-dimensional distribution functions shown in this paper are computed in this fashion. Note that to facilitate the comparison with [Planck Collaboration Int. XIX \(2014\)](#), Fig. 2 uses maps at  $1^\circ$  resolution. In the rest of the paper, as already stated, we use  $15'$  resolution maps.

It appears that for column densities between a few times  $10^{20} \text{ cm}^{-2}$  and a few times  $10^{22} \text{ cm}^{-2}$ , the selected fields probe most of the range of polarization fractions observed over the whole sky in this range of column densities. The diffuse Polaris Flare field shows low polarization, while high polarization fractions are reached at similar column densities in the Chamaeleon-Musca complex, which, being closer to the Galactic plane, is threaded by the large-scale Galactic magnetic field. Another notable feature of Fig. 2 is the fact that in regions with the largest column densities (Taurus, Orion, and Ophiuchus) the maximum polarization fraction decreases with increasing  $N_{\text{H}}$ , and that the slopes are comparable to the large-scale trend.

In the following, we perform statistical analyses of the polarization data in these nearby fields by simply selecting HEALPix pixels whose centres fall within the region of interest, directly from the large-scale maps. Only pixels for which  $p/\sigma_p > 3$  are retained. This threshold is a reasonable value above which the polarization signal-to-noise ratio is properly estimated ([Montier et al. 2014b](#)). Note that some of the fields in Table 1 are quite diffuse (e.g., Pavo), so that the dynamic range in column densities is too small to exhibit a significant relationship between  $p_{\text{max}}$  and  $N_{\text{H}}$ . These diffuse fields are therefore discarded in the later analysis.

We also build local maps of polarized emission using gnomonic projections of the HEALPix maps. These are shown in the middle row panels of Fig. 3 for the Ophiuchus and Chamaeleon-Musca fields. Similar figures for all other fields are given in Appendix A. On all these maps, which share the same scale, we show the polarization fractions  $p$  at 353 GHz (colour scale) overlaid with contours of the total gas column density and bars of constant length giving the orientation of the apparent projection of the magnetic field on the plane of the sky. These are built by rotating the 353 GHz polarization bars by  $90^\circ$  so as to recover the average magnetic field orientation in the plane of the sky. In the rest of the paper, we will refer to the rotated polarization bars as the magnetic orientation bars. Note that although they are plotted once every few pixels only, to improve visibility, each of these bars represents the orientation at the given pixel. In other



**Fig. 1.** Locations of the selected nearby fields. The background map represents optical depth  $\tau_{353}$  at 353 GHz on a logarithmic scale, at 5' resolution (Planck Collaboration XI 2014). The map uses a Mollweide projection in Galactic coordinates, with  $(l, b) = (0^\circ, 0^\circ)$  at the centre.

**Table 1.** Locations and properties of the selected fields.

Field	$l$ [°]	$b$ [°]	Distance <sup>a</sup> [pc]	Mass <sup>b</sup> [ $M_\odot$ ]	Age <sup>c</sup> [Myr]	$\langle N_H \rangle$ [ $10^{21} \text{ cm}^{-2}$ ]	Max( $N_H$ ) [ $10^{21} \text{ cm}^{-2}$ ]	$f_{22}$ [%]	$f_{21}$ [%]
Polaris Flare . . . . .	120	27	130–140	–	–	1.1	5.0	0	58
Taurus . . . . .	173	–15	140	$2 \times 10^4$	20	4.1	26	4.2	0.8
Orion . . . . .	211	–16	414	$3 \times 10^5$	>12	4.0	40	5.4	7.3
Chamaeleon-Musca . . . . .	300	–13	160–180	$5 \times 10^3$	>2	2.0	21	0.5	7.5
Ophiuchus . . . . .	354	15	120–140	$3 \times 10^4$	>2–5	3.1	62	2.2	3.8
Microscopium . . . . .	15	–40	–	–	–	0.4	1.1	0	99
Pisces . . . . .	133	–37	–	–	–	0.4	1.9	0	99
Perseus . . . . .	143	–25	–	–	–	0.4	1.5	0	99
Ara . . . . .	336	–14	–	–	–	0.8	2.1	0	75
Pavo . . . . .	336	–28	–	–	–	0.4	1.4	0	99

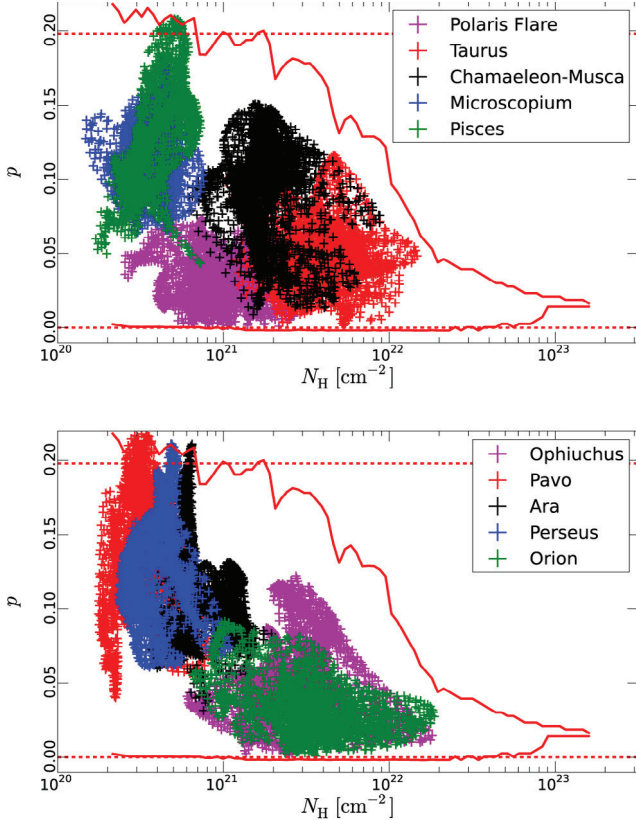
**Notes.** The table includes: Galactic longitudes  $l$  and latitudes  $b$  of the centre of the  $12^\circ \times 12^\circ$  fields; estimates of distances, masses and ages, where available; average and maximum column densities at 15' resolution; fraction  $f_{22}$  of the pixels with  $N_H > 10^{22} \text{ cm}^{-2}$ ; and fraction  $f_{21}$  of the pixels with  $N_H < 10^{21} \text{ cm}^{-2}$ . These fields are the same as several of those listed in Table 1 of Planck Collaboration Int. XIX (2014). <sup>(a)</sup> Estimates of distances are from Elias (1978) for Taurus, Zagury et al. (1999) for Polaris Flare, de Zeeuw et al. (1999) for Ophiuchus, Whittet et al. (1997) for Chamaeleon-Musca, and Draine (2011) for Orion. <sup>(b)</sup> Estimates of masses are from Ungerechts & Thaddeus (1987) for Taurus, Loren (1989) for Ophiuchus, Luhman (2008) for Chamaeleon-Musca, and Draine (2011) for Orion. <sup>(c)</sup> Estimates of ages are from Palla & Stahler (2002) for Taurus, Wilking et al. (2008) for Ophiuchus, Luhman (2008) for Chamaeleon-Musca, and Bally (2008) for Orion.

words, beyond the 15' smoothing performed on the Stokes maps, no further averaging is done to plot the orientation bars on Fig. 3 and similar plots.

The large-scale structure of the Galactic magnetic field appears clearly (see e.g., the top part of the Chamaeleon-Musca field, Fig. 3). There is also a strong correlation between the coherence of the polarization orientation and the level of polarization fraction, in the sense that more ordered regions have

higher polarization fractions. This feature, which is already seen at 1' resolution in Planck Collaboration Int. XIX (2014), is discussed later on in Sect. 2.5.

A final qualitative aspect of these maps is that regions with higher column densities tend to be less polarized than their surroundings. An example of this effect can be seen in the Chamaeleon-Musca field (Fig. 3, center right panel) near  $(l, b) = (301^\circ, -9^\circ)$ , where  $p \simeq 10\%$ , while it is surrounded



**Fig. 2.** Two-dimensional distribution functions of polarization fraction  $p$  and column density  $N_{\text{H}}$  in the fields highlighted in Fig. 1. *Top:* Polaris Flare (magenta), Taurus (red), Chamaeleon-Musca (black), Microscopium (blue), and Pisces (green). *Bottom:* Ophiuchus (magenta), Pavo (red), Ara (black), Perseus (blue), and Orion (green). On both panels, the solid red lines show the upper and lower envelopes (see text) of the large-scale distribution of  $p$  and  $N_{\text{H}}$ , clipped below  $N_{\text{H}} = 2 \times 10^{20} \text{ cm}^{-2}$ , while the dashed red lines correspond to  $p = 0$  and the maximum value  $p = 0.198$  (i.e., 19.8%) quoted in Planck Collaboration Int. XIX (2014).

by more diffuse material with  $p \approx 15\%$ . A future paper (Planck Collaboration Int. XIII 2014) will discuss in more detail the structure of the polarized thermal emission with respect to the morphology of the clouds themselves.

### 2.3. Maximum polarization fraction

We give in Table 2 the maximum polarization fractions  $p_{\text{max}}$  in all the selected fields. Note that for the most diffuse fields Microscopium, Pisces, Perseus, Ara, and Pavo, the quoted values should be taken with caution, since most pixels in these regions have  $N_{\text{H}} \leq 10^{21} \text{ cm}^{-2}$ , which corresponds roughly to  $I_{353} \leq 0.5 \text{ MJy sr}^{-1}$ , and therefore the effect of the (uncertain) zero-level offset on the polarization fraction  $p$  may not be negligible.

In the less diffuse fields, the values of  $p_{\text{max}}$  are noticeably larger than those found in the same fields at  $1^\circ$  resolution in Planck Collaboration Int. XIX (2014)<sup>5</sup>, which shows the strong effect of spatial resolution on polarization measurements. The uncertainties  $\sigma_{p_{\text{max}}}$  on the maximum polarization fractions, listed

<sup>5</sup> See their Table 1, which also lists extrema, mean and median values for  $p$ , as well as median values for  $\psi$ .

in Table 2, are derived from the various sources of uncertainty involved.

First, the noise properties on the Stokes parameters  $I$ ,  $Q$ , and  $U$  in each pixel are described in the data by the noise covariance matrices, which are input in the Bayesian method of Montier et al. (2014a) and Planck Collaboration Int. XIX (2014), and lead to a map of the uncertainty  $\sigma_p$  on the polarization fraction. This includes the  $0.0068 \text{ MJy sr}^{-1}$  uncertainty on the zero-level offset. We then compute the difference  $\sigma_{p_{\text{max}},p}$  between the maximum polarization fractions found in the maps of  $p - \sigma_p$  and  $p + \sigma_p$ .

Second, there is a part of the uncertainty related to the method used to debias the data (Montier et al. 2014a). We have computed the standard deviation  $\sigma_{p_{\text{max},d}}$  of the maximum polarization fractions obtained in each field when using the “naïve”  $\sqrt{Q^2 + U^2}/I$ , modified asymptotic (MAS, Plaszczyński et al. 2014) and Bayesian estimators of  $p$ .

Third, we have computed the standard deviation  $\sigma_{p_{\text{max},s}}$  of the maximum polarization fractions obtained in each field when considering subsets of the data, namely half-ring maps (one half of each stable pointing period) and detector set maps (one half of the detectors).

The final uncertainty quoted in Table 2 is then given by the quadratic sum

$$\sigma_{p_{\text{max}}}^2 = \sigma_{p_{\text{max},p}}^2 + \sigma_{p_{\text{max},d}}^2 + \sigma_{p_{\text{max},s}}^2/2. \quad (3)$$

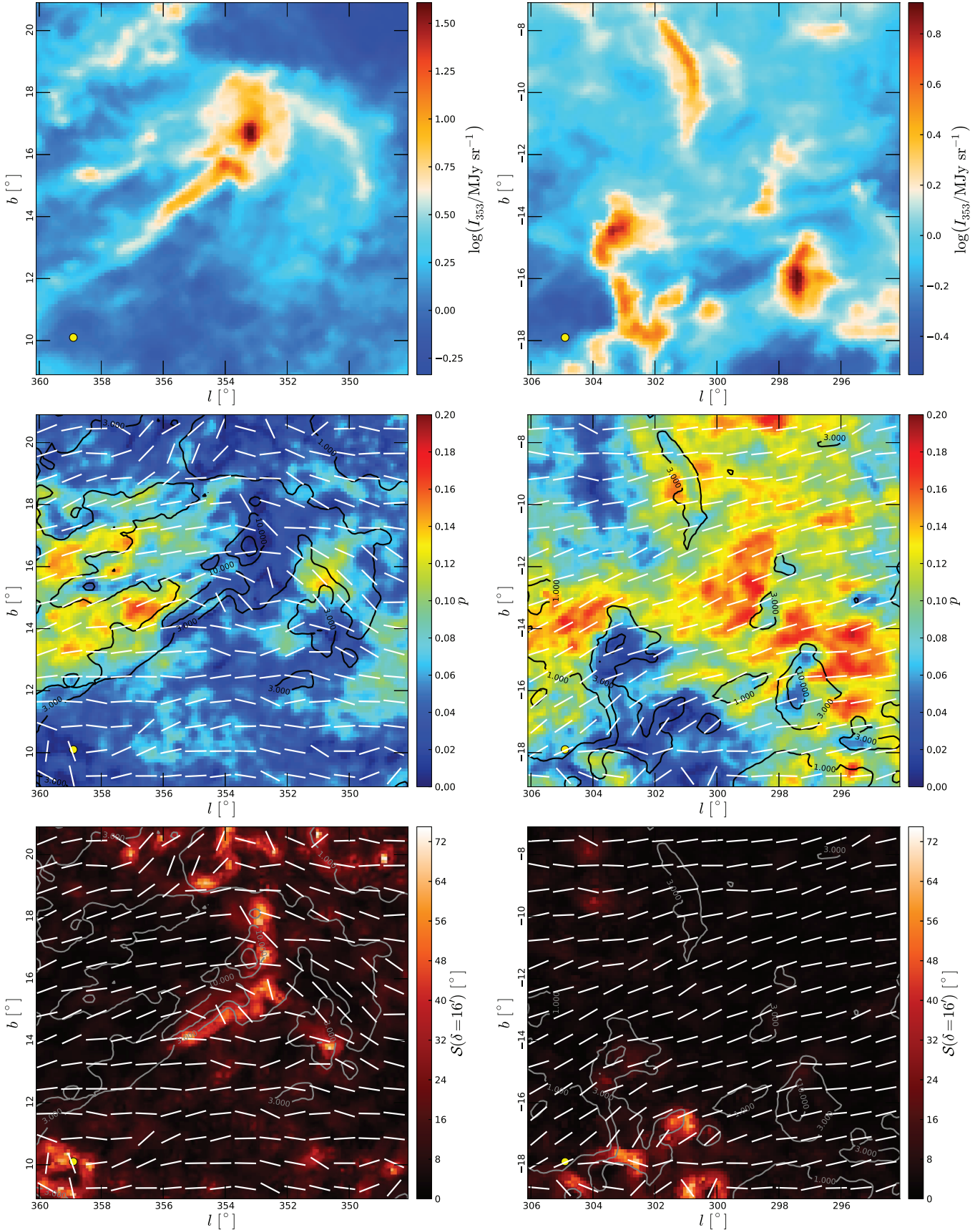
It should be noted that the last contribution is usually the dominant one in the selected fields, and that the uncertainty related to the debiasing method is much smaller than the other two.

### 2.4. Polarization fraction vs. column density

We show the distributions of  $p$  and  $N_{\text{H}}$  for the Ophiuchus and Chamaeleon-Musca fields in Fig. 4 and for all other fields in Appendix A. The decrease in maximum polarization fraction  $p_{\text{max}}$  at higher column densities is apparent for all fields, above a given threshold in  $N_{\text{H}}$  that depends on the field and is of the order of  $10^{21}$  to  $3 \times 10^{21} \text{ cm}^{-2}$ , corresponding to visual extinctions  $A_V \approx 0.6$  to  $1.7$ , for the fields that are not too diffuse (Polaris Flare, Taurus, Orion, Chamaeleon-Musca, and Ophiuchus). Below this threshold, the polarization fraction may be related to the background more than to the clouds themselves. To quantify the decrease in maximum polarization fraction  $p_{\text{max}}$  with increasing  $N_{\text{H}}$ , we consider the upper envelope of the distribution of  $p$  and  $N_{\text{H}}$ , computed as described in Sect. 2.2, and fit this curve with a function  $p_{\text{max}} = m \log(N_{\text{H}}/\text{cm}^{-2}) + c$ , restricted to a range of column densities that depends on the field considered (see Table 2). Note that we perform this fit for the above five fields only, for which there is a large enough dynamic range in column density.

Results of these fits are shown as solid black lines on each panel of Fig. 4, and values of the slopes  $m$  and intercepts  $c$  are listed in Table 2. Uncertainties on these parameters are derived in the same way as for the maximum polarization fractions  $p_{\text{max}}$  in the previous section. The slopes  $m$  range between  $-0.068$  for Orion and  $-0.140$  for Taurus, and regions exhibiting stronger column density peaks (e.g., Orion) tend to have shallower slopes than more diffuse molecular clouds (e.g., Polaris Flare).

As mentioned before, the pixels selected for plotting Fig. 4 and performing the fits are those for which the polarization signal-to-noise ratio is  $p/\sigma_p > 3$ . We have checked that modifying this threshold does not change our results, as can be seen in Fig. 5, which shows the same as the top panel of

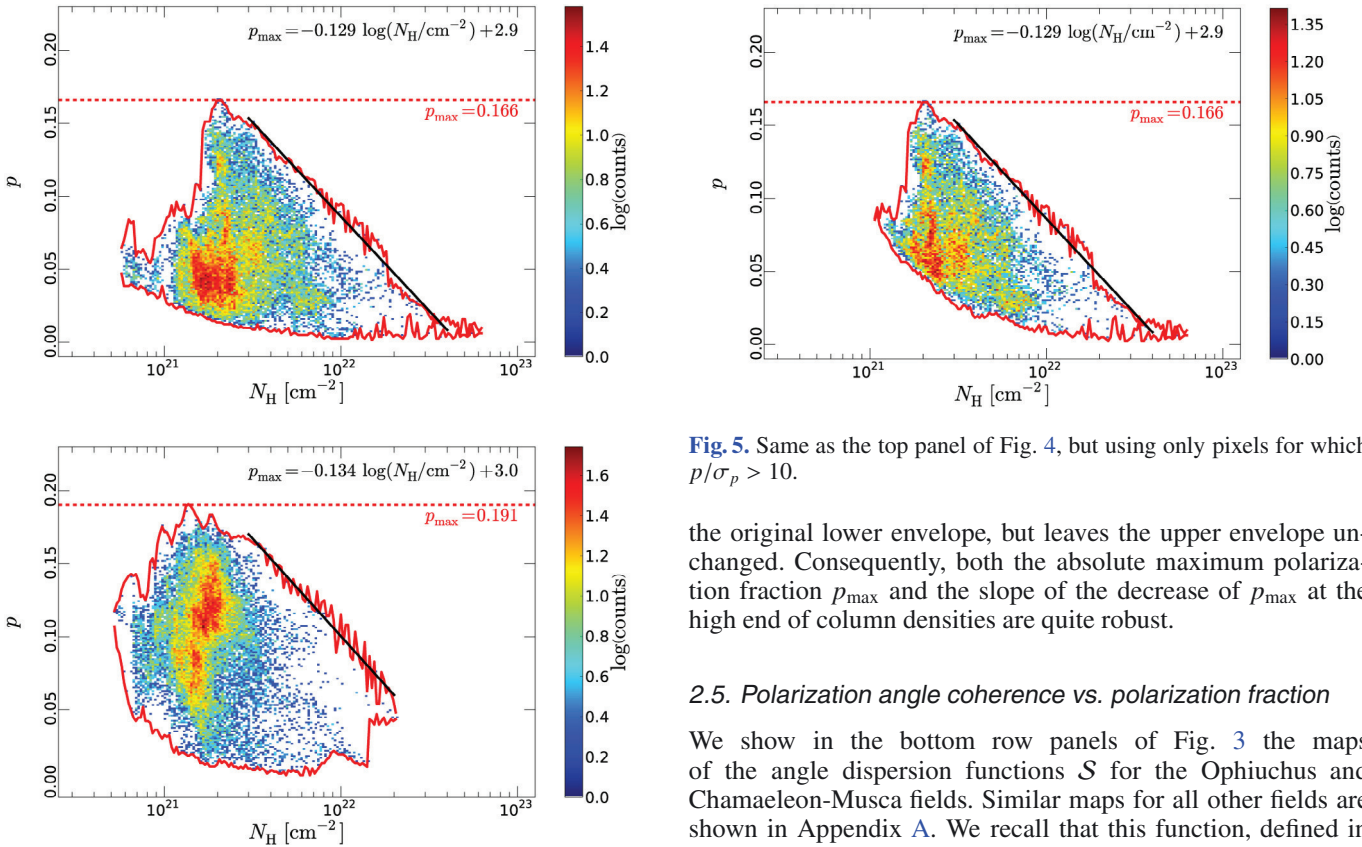


**Fig. 3.** Maps of the Ophiuchus and Chamaeleon-Musca fields. *Left:* Ophiuchus field. *Right:* Chamaeleon-Musca field. *Top:* total intensity at 353 GHz. *Middle:* polarization fraction  $p$ , column density  $N_{\text{H}}$  (contours in units of  $10^{21} \text{ cm}^{-2}$ ), and magnetic orientation (bars, see text). *Bottom:* angle dispersion function  $S$  with lag  $\delta = 16'$  (see Sect. 2.5) with contours and bars identical to the middle row. In all maps, the 15' beam is shown in the lower-left corner.

**Table 2.** Polarization statistics in the selected fields.

Field	$p_{\max}$	$p_{\max} = m \log(N_{\text{H}}/\text{cm}^{-2}) + c$		$N_{\text{H}}$ range [ $10^{21}$ $\text{cm}^{-2}$ ]	$\log(S) = m' \log(p) + c'$	
		$m$	$c$		$m'$	$c'$
Polaris Flare . . . . .	$0.134 \pm 0.015$	$-0.114 \pm 0.014$	$2.5 \pm 0.3$	1–4	$-0.56 \pm 0.08$	$0.25 \pm 0.17$
Taurus . . . . .	$0.149 \pm 0.011$	$-0.140 \pm 0.004$	$3.2 \pm 0.1$	5–25	$-0.87 \pm 0.09$	$-0.31 \pm 0.11$
Orion . . . . .	$0.129 \pm 0.014$	$-0.068 \pm 0.003$	$1.6 \pm 0.1$	3–40	$-0.87 \pm 0.11$	$-0.25 \pm 0.13$
Chamaeleon-Musca . . . . .	$0.190 \pm 0.008$	$-0.134 \pm 0.003$	$3.0 \pm 0.1$	3–20	$-0.94 \pm 0.03$	$-0.39 \pm 0.02$
Ophiuchus . . . . .	$0.166 \pm 0.006$	$-0.129 \pm 0.004$	$2.9 \pm 0.1$	3–40	$-0.92 \pm 0.05$	$-0.30 \pm 0.04$
Microscopium . . . . .	$0.24 \pm 0.05$	–	–	–	$-0.41 \pm 0.07$	$0.38 \pm 0.07$
Pisces . . . . .	$0.30 \pm 0.11$	–	–	–	$-0.67 \pm 0.13$	$0.21 \pm 0.12$
Perseus . . . . .	$0.33 \pm 0.09$	–	–	–	$-0.46 \pm 0.09$	$0.37 \pm 0.06$
Ara . . . . .	$0.27 \pm 0.03$	–	–	–	$-0.48 \pm 0.07$	$0.15 \pm 0.06$
Pavo . . . . .	$0.48 \pm 0.18$	–	–	–	$-0.27 \pm 0.05$	$0.57 \pm 0.03$

**Notes.** The table includes: absolute maximum polarization fraction at  $15'$  resolution; linear fit parameters  $m$  and  $c$  to the decrease of  $p_{\max}$  with  $\log(N_{\text{H}}/\text{cm}^{-2})$ , with fitting range indicated; and linear fit parameters of the  $\log(S)$  vs.  $\log(p)$  correlation. See text for the derivation of the listed uncertainties. The figures given here are for a signal-to-noise threshold  $p/\sigma_p > 3$ .



**Fig. 4.** Two-dimensional distribution function of polarization fraction  $p$  and column density  $N_{\text{H}}$ . *Top:* Ophiuchus field. *Bottom:* Chamaeleon-Musca field. The distribution functions are presented in logarithmic colour scale and include only points for which  $p/\sigma_p > 3$ . The dashed red lines correspond to the absolute maximum polarization fractions  $p_{\max}$  and the solid red curves show the upper and lower envelopes of  $p$  as functions of  $N_{\text{H}}$ . The solid black line is a linear fit  $p_{\max} = m \log(N_{\text{H}}/\text{cm}^{-2}) + c$  to the decrease of the maximum polarization fraction with column density at the high end of  $N_{\text{H}}$  (see Table 2 for the fitting ranges and fit parameters).

Fig. 4 but with a signal-to-noise ratio threshold  $p/\sigma_p > 10$ . The effect of that stricter selection is to remove points below

**Fig. 5.** Same as the top panel of Fig. 4, but using only pixels for which  $p/\sigma_p > 10$ .

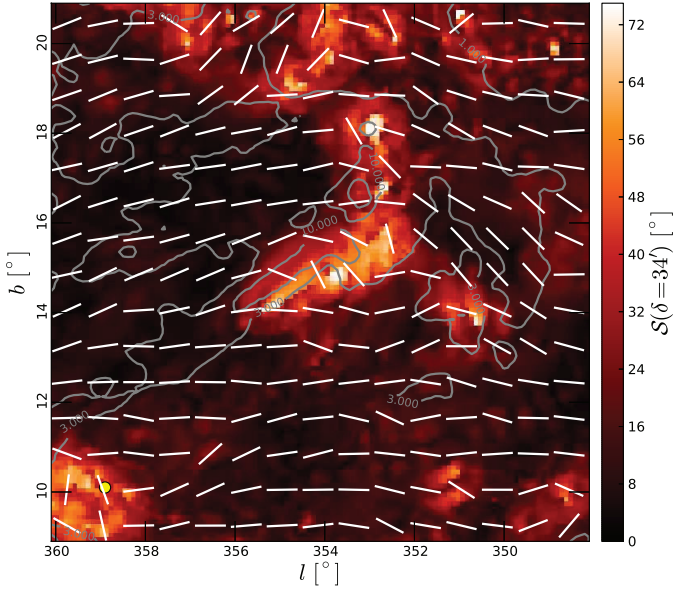
the original lower envelope, but leaves the upper envelope unchanged. Consequently, both the absolute maximum polarization fraction  $p_{\max}$  and the slope of the decrease of  $p_{\max}$  at the high end of column densities are quite robust.

### 2.5. Polarization angle coherence vs. polarization fraction

We show in the bottom row panels of Fig. 3 the maps of the angle dispersion functions  $\mathcal{S}$  for the Ophiuchus and Chamaeleon-Musca fields. Similar maps for all other fields are shown in Appendix A. We recall that this function, defined in Planck Collaboration Int. XIX (2014), is

$$\mathcal{S}(\mathbf{r}, \delta) = \sqrt{\frac{1}{N} \sum_{i=1}^N [\psi(\mathbf{r}) - \psi(\mathbf{r} + \delta_i)]^2}, \quad (4)$$

where the sum extends over pixels whose distances from the central pixel  $\mathbf{r}$  are between  $\delta/2$  and  $3\delta/2$ . Here they are computed at a lag  $\delta = 16'$ , comparable to the size of the beam's FWHM. One can readily see filamentary structures that correspond to regions where the polarization angle is less ordered or where it changes abruptly. These filaments are already noted at  $1^\circ$  resolution in Planck Collaboration Int. XIX (2014) over several degrees. These regions of large angular dispersions correspond to



**Fig. 6.** Map of  $S$  for the Ophiuchus field computed at  $\delta = 34'$ . Contours are the same as in the map at  $\delta = 16'$  (bottom left panel of Fig. 3).

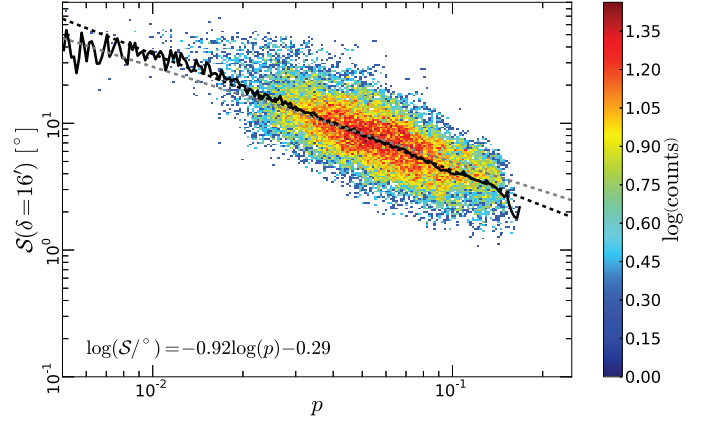
regions of low polarization fraction, as can be seen for instance by comparing the middle and bottom row panels of Fig. 3.

When increasing the value of the lag  $\delta$ , we obtain maps of  $S$  such as that presented in Fig. 6 for the Ophiuchus field at  $\delta = 34'$  (approximately twice the FWHM). It appears that the overall value of  $S$  increases with lag, as already noted in Hildebrand et al. (2009) and Planck Collaboration Int. XIX (2014). However, since  $S$  has an upper limit of  $90^\circ$ , this means that the anti-correlation with  $p$  (see below) will flatten out at large lags. Note however that a completely random sample yields  $S = \pi/\sqrt{12} \simeq 52^\circ$  (Planck Collaboration Int. XIX 2014). Values larger than this are few, but they do exist, as can be seen on the maps of  $S$  in Figs. 3 and 6. They may be linked to sharp boundaries between two well-ordered regions: for instance, the angle dispersion function at the interface between two half-planes with orthogonal magnetic orientations is  $S = \pi/\sqrt{8} \simeq 64^\circ$ .

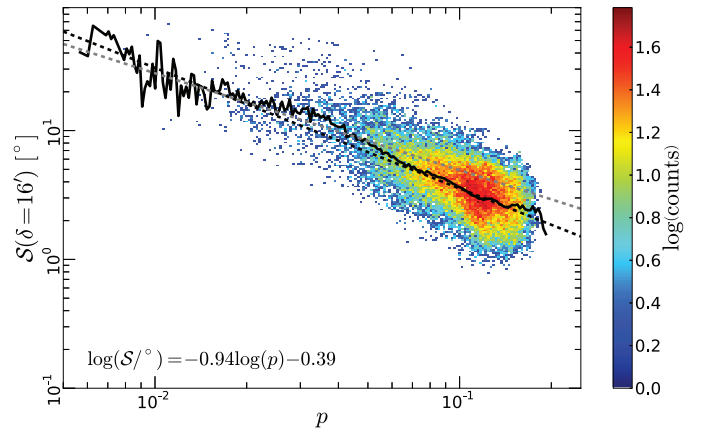
To confirm the visual impression that the spatial coherence of the polarization angle is anti-correlated with the polarization fraction, we show the distribution function of these two quantities for the Ophiuchus and Chamaeleon-Musca fields in Figs. 7 and 8, respectively, and for all other fields in Appendix A.

The large-scale anti-correlation seen in Planck Collaboration Int. XIX (2014) at  $1^\circ$  resolution and  $\delta = 30'$  is also present when using a lag close to the beam size. With  $\delta = 1^\circ 07'$ , we find it to be  $\log(S) = -0.75 \log p - 0.06$ , where  $S$  is measured in degrees. Since in this case the ratio  $\delta/\text{FWHM}$  is the same as for our higher resolution maps ( $\text{FWHM} = 15'$  and  $\delta = 16'$ ), we compare the anti-correlations found in the selected fields to this law. Note that the slope  $-0.75$  is similar to the value  $-0.834$  quoted in Planck Collaboration Int. XIX (2014), but the intercept is larger ( $-0.06$  vs.  $-0.504$ ). This points to a global increase of  $S$  at larger  $\delta/\text{FWHM}$  values, which we interpret as a decorrelation of polarization angles at larger lags.

The distributions of  $p$  and  $S$  in the various fields considered show an anti-correlation very similar to the large-scale trend, with slopes and intercepts of the fits through the data points that are very close to the large-scale fit values. When increasing the lag at the same resolution, however,  $S$  increases and the anti-correlation with  $p$  flattens out, as can be seen in Fig. 9. The linear



**Fig. 7.** Two-dimensional distribution function of  $S$  and polarization fraction  $p$  for the Ophiuchus field. The angle dispersion function  $S$  is computed at a lag  $\delta = 16'$ . Only pixels for which  $p/\sigma_p > 3$  are retained. The dashed grey line is the large-scale fit (with  $\text{FWHM} = 1^\circ$  and  $\delta = 1^\circ 07'$ )  $\log(S) = -0.75 \log(p) - 0.06$ , the solid black line shows the mean  $S$  for each bin in  $p$  (the bin size is  $\Delta \log(p) = 0.008$ ) and the dashed black line is a linear fit of that curve in log-log space, restricted to bins in  $p$  which contain at least 1% of the total number of points (so about 150 points per bin).



**Fig. 8.** Same as Fig. 7, but for the Chamaeleon-Musca field.

fits  $\log(S) = m' \log p + c'$  for the individual fields are listed in Table 2. The uncertainties on the parameters  $m'$  and  $c'$  are the quadratic sums of uncertainties obtained in three ways: (i) by performing the linear regression using the three estimators of  $p$ , i.e., the “naïve”, MAS and Bayesian ones; (ii) by using half-ring maps and detector set maps; (iii) via a Monte-Carlo simulation using the maps of polarization fraction uncertainty  $\sigma_p$  and angle dispersion function uncertainty  $\sigma_S$  (Planck Collaboration Int. XIX 2014).

### 3. Simulations of polarized emission

#### 3.1. Simulations of MHD turbulence

We aim to compare the observed polarization statistics in the selected fields to predictions built on the results of a numerical simulation of MHD turbulence. This simulation is described in

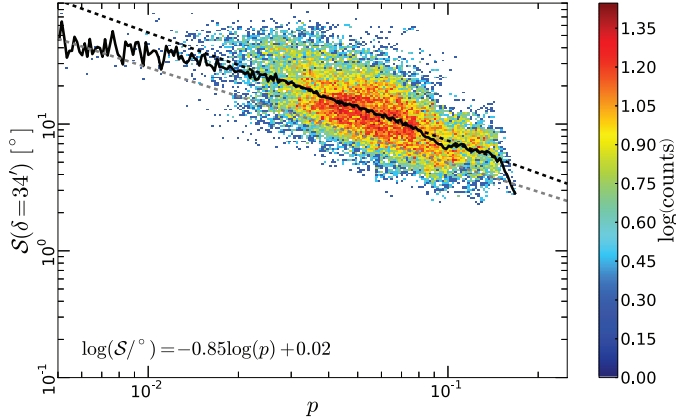


Fig. 9. Same as Fig. 7, but for a lag  $\delta = 34'$ .

detail in Hennebelle et al. (2008)<sup>6</sup>. It follows the formation of clumps of dense and cold gas (cold neutral medium, CNM) out of magnetized warm neutral atomic gas (warm neutral medium, WNM) in an open box of 50 pc on each side, without reaching the stage when cold cores of column density larger than  $2 \times 10^{22} \text{ cm}^{-2}$  form.

The simulation cube initially contains a uniform distribution of WNM with density  $n_{\text{H}} = 1 \text{ cm}^{-3}$  and temperature  $T = 8000 \text{ K}$ , and two converging flows of that same gas are injected from opposing faces along the  $x$  axis with a velocity  $\Delta V_x \simeq 40 \text{ km s}^{-1}$  relative to each other. Spatial modulations of the velocity are imposed on the incoming flows, with amplitudes relative to the mean flow of about unity and a periodicity of about 10 pc. Periodic boundary conditions are applied on the remaining four faces. The total mass contained in the cube continuously increases with time. The magnetic field's initial direction is along that of the incoming flows, and its intensity is about  $5 \mu\text{G}$ , consistent with observational values at these densities (Crutcher et al. 2010). There is therefore a large-scale anisotropic component of the magnetic field throughout the simulation, as well as a turbulent component linked to the velocity perturbations imposed on the converging flows.

These flows collide near the midplane, where the combined effects of cooling and self-gravity eventually lead to the formation of dense ( $n_{\text{H}} > 100 \text{ cm}^{-3}$ ) clumps of cold gas ( $T$  of the order of 10–50 K; Hennebelle & Audit 2007). To follow that condensation, the grid is adaptively refined, with an effective (maximum) resolution of 0.05 pc.

In this paper, we select a cubic subset (18 pc  $\times$  18 pc  $\times$  18 pc) of the density and magnetic field in the simulation snapshot timed at  $t = 10.9 \text{ Myr}$ , which corresponds to an evolved state of the simulation, given the crossing time  $t_c \simeq 2.4 \text{ Myr}$ . The structures present in the simulation are due to the collision of the incoming flows and not to a pure gravitational collapse, since the initial free-fall time is  $t_{\text{ff}} \simeq 44 \text{ Myr}$ . However, some of the densest structures ( $n_{\text{H}} > 10^4 \text{ cm}^{-3}$ ) may have had time to collapse.

The chosen subset is located near the midplane, so that the influence of boundary conditions is minimal. It contains approximately  $3200 M_{\odot}$  of gas; its physical properties are listed in Table 3, and the distribution functions of total gas density  $n_{\text{H}}$  and magnetic field components  $B_x$ ,  $B_y$ ,  $B_z$  are shown in Figs. 10

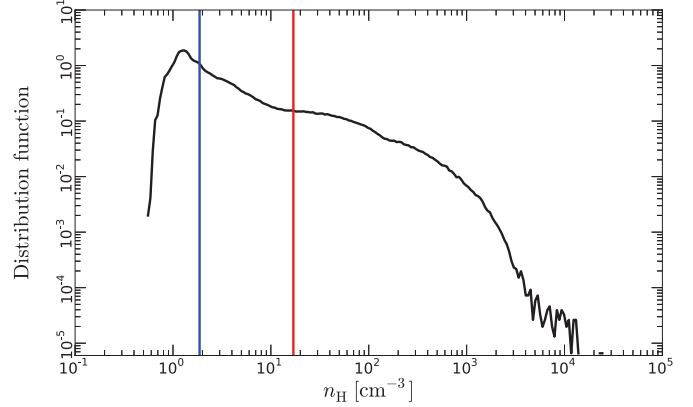


Fig. 10. Distribution function of the total gas density  $n_{\text{H}}$  in the selected subset of the simulation, with cell sizes  $0.1 \text{ pc} \times 0.1 \text{ pc} \times 0.1 \text{ pc}$ . The solid red line shows the mean value  $\langle n_{\text{H}} \rangle = 17 \text{ cm}^{-3}$  and the solid blue line the median value  $n_{\text{H}}^{\text{med}} = 2 \text{ cm}^{-3}$ .

Table 3. Physical properties of the subset of the simulation.

$F$	$\langle F \rangle$	Min( $F$ )	Max( $F$ )	$\sigma(F)$
$N_{\text{H}} [10^{21} \text{ cm}^{-2}] \dots$	1.0	0.05	13.4	1.0
$n_{\text{H}} [\text{cm}^{-3}] \dots$	16.4	0.5	$4.1 \times 10^4$	92
$B_x [\mu\text{G}] \dots$	5.8	-32.5	25.8	3.2
$B_y [\mu\text{G}] \dots$	-0.1	-26.1	26.5	3.0
$B_z [\mu\text{G}] \dots$	0.3	-22.3	30.6	3.3

Notes. These values correspond to  $\alpha = 0^\circ$  (see text and Fig. 13).

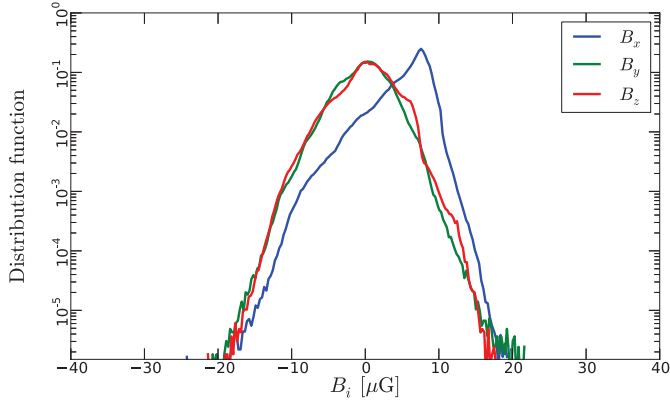
and 11, respectively. The standard deviations are very similar for all three magnetic field components, but only the  $x$  component has a significant mean value, which shows that the mean magnetic field within the cube is approximately aligned with the  $x$  axis, that is with the incoming flows.

We would like to stress here that the MHD simulations we use for comparison with the *Planck* polarization data do not faithfully reproduce the whole range of densities and column densities spanned by the cloud sample of Table 1, i.e., from diffuse molecular clouds (Polaris Flare) to massive star-forming clouds (Orion). However, as shown in Table 1, only a few percent of the pixels (at most 5.4% in Orion) have column densities larger than  $10^{22} \text{ cm}^{-2}$  in these fields, the regions of star formation filling only a small fraction of the area in each field. The MHD simulations with their broad range of densities (Fig. 10) and column densities reaching<sup>7</sup>  $N_{\text{H}} = 1.6 \times 10^{22} \text{ cm}^{-2}$  are therefore representative of the dynamics of the bulk of the gas. Together with their anisotropy, due to the large-scale magnetic field pervading the cube, these simulations are particularly well suited to analyse the polarization properties of nearby molecular clouds immersed in their low density and large-scale environment.

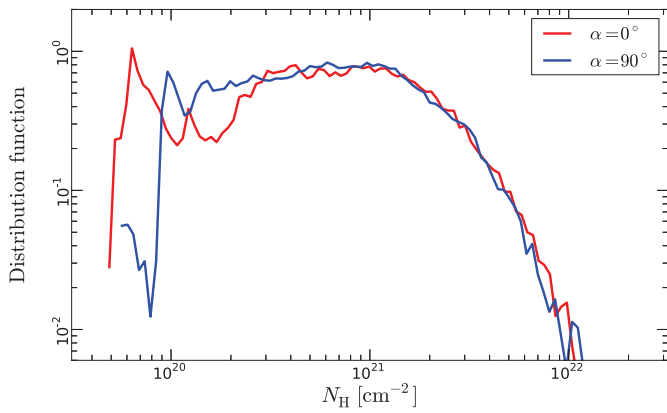
To compute simulated polarization fractions  $p$ , the local gas density  $n_{\text{H}}$  and magnetic field components  $B_x$ ,  $B_y$ ,  $B_z$  are extracted from the simulation and interpolated on a regular grid at the next-to-highest spatial resolution available, so that pixel sizes are approximately  $\Delta x = 0.1 \text{ pc}$ . These cubes are used in the following section to build simulated polarized emission maps. However, they are first rotated around the  $y$  axis, as sketched out

<sup>6</sup> It was performed with the RAMSES code (Teyssier 2002; Fromang et al. 2006), whose adaptive mesh refinement capabilities allow for a locally high spatial sampling. It is freely available via the STARFORMAT project, <http://starformat.obspm.fr/>. To be precise, it is the *Fiducial* run under the tab *Colliding flow simulation*.

<sup>7</sup> This value is computed over the whole range of viewing angles  $\alpha$ .



**Fig. 11.** Distribution functions of the components of the magnetic field,  $B_x$  (blue),  $B_y$  (green), and  $B_z$  (red), in the selected subset of the simulation, with cell sizes  $0.1 \text{ pc} \times 0.1 \text{ pc} \times 0.1 \text{ pc}$ .



**Fig. 12.** Distribution functions of the total gas column density  $N_{\text{H}}$  in the selected subset of the simulation, using viewing angles  $\alpha = 0^\circ$  (red) and  $\alpha = 90^\circ$  (blue). These distribution functions are computed after convolution with the  $15'$  beam.

in Fig. 13, to explore the full range of possible angles between the mean magnetic field and the line of sight, and therefore to test the effects of the large-scale magnetic field's anisotropy. The viewing angle  $\alpha$  introduced in Fig. 13 is such that the mean magnetic field is approximately in the plane of the sky for  $\alpha = 0^\circ$ , and along the line of sight for  $\alpha = 90^\circ$ .

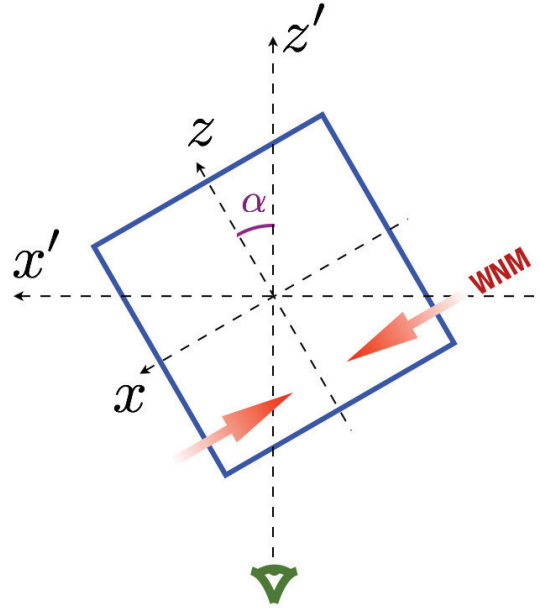
### 3.2. Simulated Planck observations

We build simulated Stokes  $I$ ,  $Q$ , and  $U$  maps by integrating along the line of sight ( $z'$  in Fig. 13) through the rotated simulation cube, following the method in Wardle & Königl (1990), Fiege & Pudritz (2000), Pelkonen et al. (2009), and Padovani et al. (2012). Because of a number of inconsistencies in the literature, we give the correct derivation in Appendix B, drawing on the works of Lee & Draine (1985) and Wardle & Königl (1990). This results in:

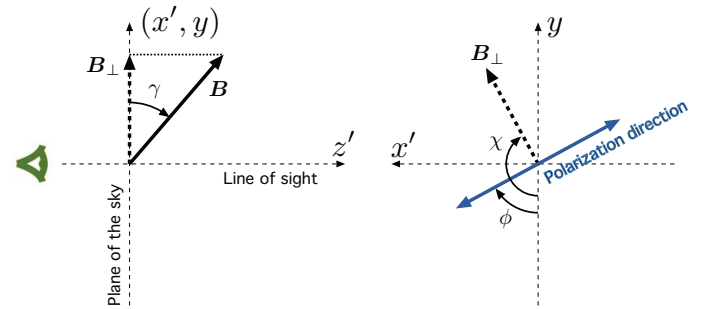
$$I = \int S_\nu e^{-\tau_\nu} \left[ 1 - p_0 \left( \cos^2 \gamma - \frac{2}{3} \right) \right] d\tau_\nu; \quad (5)$$

$$Q = \int p_0 S_\nu e^{-\tau_\nu} \cos(2\phi) \cos^2 \gamma d\tau_\nu; \quad (6)$$

$$U = \int p_0 S_\nu e^{-\tau_\nu} \sin(2\phi) \cos^2 \gamma d\tau_\nu. \quad (7)$$



**Fig. 13.** Sketch of the rotation of the simulation subset.

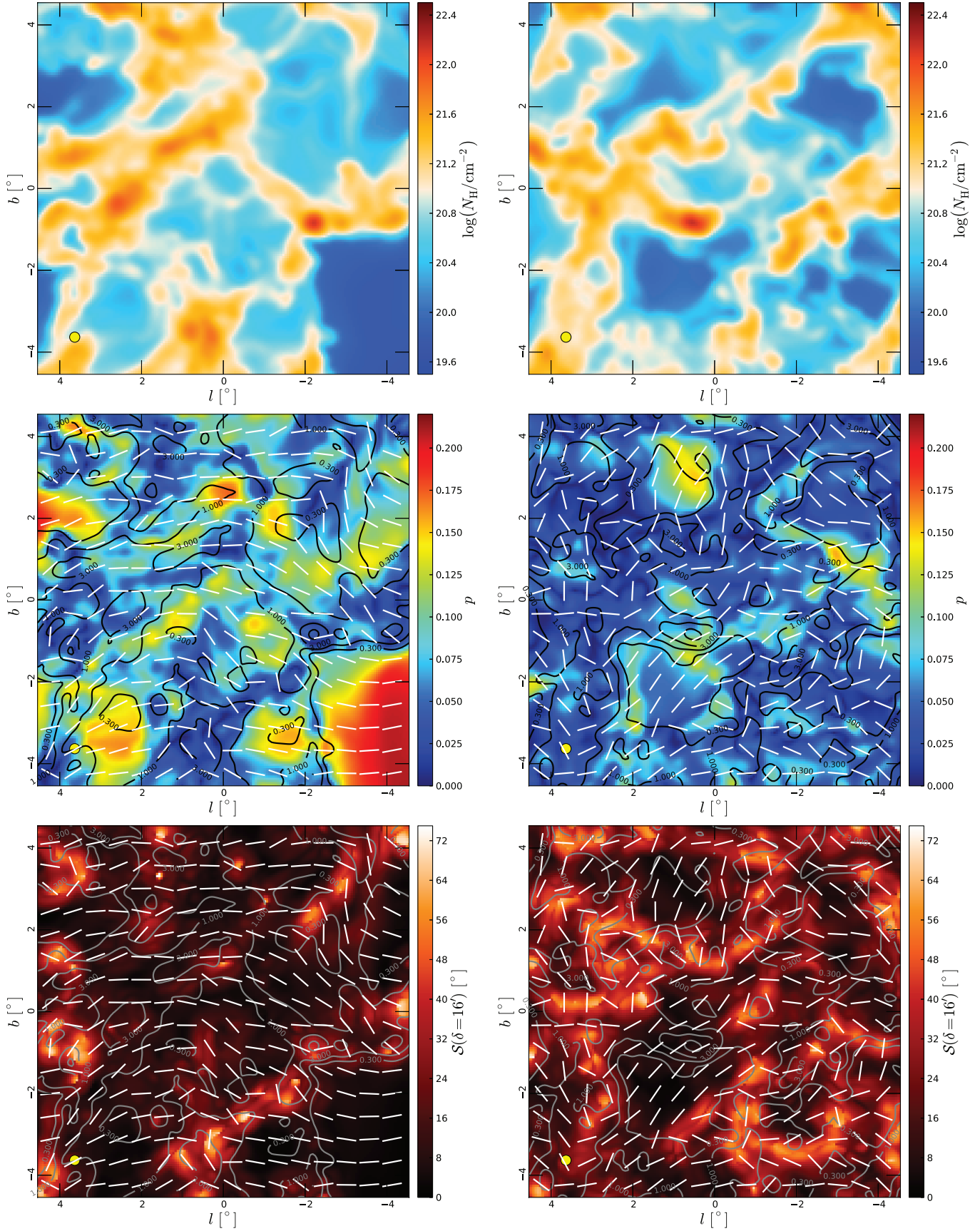


**Fig. 14.** Definition of angles. Here the line of sight is along the  $z'$  axis (see Fig. 13),  $\gamma$  is the angle the magnetic field  $\mathbf{B}$  makes with the plane of the sky,  $\phi$  is the local polarization angle, and  $\chi$  is the position angle of the plane of the sky projection  $\mathbf{B}_\perp$ , both in the HEALPix convention, so counted positively clockwise from the north-south direction, while the IAU convention is anti-clockwise (Planck Collaboration Int. XIX 2014).

Here  $p_0$  is a polarization fraction parameter related to the intrinsic polarization fraction (see Eq. (8) and Appendix B),  $\gamma$  is the angle that the local magnetic field makes with the plane of the sky, and  $\phi$  is the local polarization angle in the HEALPix convention. This angle differs by  $90^\circ$  from the angle  $\chi$  of the plane of the sky projection of the magnetic field, as defined in Fig. 14, and should not be confused with the actual polarization angle  $\psi$ . These angles are equal ( $\phi = \psi$ ) only for a uniform magnetic field along the line of sight.

Note that the corrective term in Eq. (5) is incorrectly written in Fiege & Pudritz (2000), Gonçalves et al. (2005), Pelkonen et al. (2009), and Padovani et al. (2012), with  $p_0/2$  instead of  $p_0$ .

The hypotheses made here, besides the absence of background radiation, are that  $p_0 = 0.2$  is uniform, that the source function  $S_\nu = B_\nu(T_d)$  is that of a blackbody with an assumed uniform dust temperature  $T_d = 18 \text{ K}$ , and that since we are working at  $353 \text{ GHz}$  the optical depth is simply given by  $d\tau_\nu = \sigma_{353} n_{\text{H}} dz'$ . We use the value  $\sigma_{353} = 1.2 \times 10^{-26} \text{ cm}^2$  (see Sect. 2.1), and  $n_{\text{H}}$  is the total gas density in the simulation. Given the maximum gas column density in the simulation



**Fig. 15.** Simulated *Planck* maps. *Top:* total gas column density. *Middle:* polarization fraction and angle, with contours being the column density at values indicated in units of  $10^{21} \text{ cm}^{-2}$ , and the bars indicate magnetic orientation. *Bottom:* angle dispersion function at lag  $\delta = 16'$ , with the same contours and bars as in the middle row. *Left:* viewing angle  $\alpha = 0^\circ$ . *Right:* viewing angle  $\alpha = 90^\circ$ . In each row, the same colour scale is used. In the lower left corner of each plot (yellow circle) is the 15' FWHM beam.

subset computed over all possible viewing angles  $\alpha$ ,  $N_{\text{H,max}} = 1.6 \times 10^{22} \text{ cm}^{-2}$ , the maximum optical depth at 353 GHz using this conversion factor is  $\tau_{\text{max}} = 1.9 \times 10^{-4}$ , so we may safely neglect optical depth effects and take  $e^{-\tau_\nu} = 1$  in the  $I$ ,  $Q$ , and  $U$  integrals. We are aware (Planck Collaboration XI 2014) that the opacity actually varies with  $N_{\text{H}}$ , but the variation is at most a factor of 3 from the value assumed here, so the optical depth is in any case much lower than unity. Moreover, the choice of the conversion factor has no impact on the simulated maps of polarization fractions and angles, provided that a constant value is assumed along each line of sight.

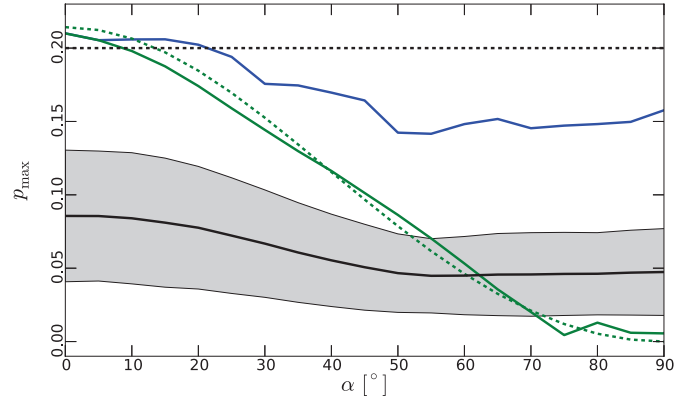
We note that the dense cores that exist in our simulated cube are only weakly shielded from the ambient UV radiation field. Indeed, the mean column density through the cube is about  $10^{21} \text{ cm}^{-2}$  (corresponding to  $A_V \simeq 0.6$ ), which is comparable to the values in the simulation of Pelkonen et al. (2009), but over a much larger volume (18 pc box compared to less than 1 pc); the bulk of the gas is therefore more fragmented and radiation penetrates more easily (Levrier et al. 2012). That is why we take a uniform parameter  $p_0$ .

The maps of Stokes parameters are placed at a distance of  $D = 100$  pc and convolved with a circular  $15'$  FWHM Gaussian beam (corresponding to a physical size  $0.44$  pc). The resulting field of view is a little less than  $10^\circ$  across, which is comparable to the selected *Planck* fields, and small enough that separate smoothing of Stokes  $I$ ,  $Q$ , and  $U$  is not an issue (see Appendix A of Planck Collaboration Int. XIX 2014). Maps of polarization fractions and angles are then built from these convolved Stokes parameter maps using Eqs. (1), (2) for consistency with the *Planck* data. Let us stress that  $\psi$  is defined in the HEALPix convention, which means that it is counted positively clockwise from the north-south direction, and not in the IAU convention (anti-clockwise).

Figure 15 (middle row) shows the maps of polarization fraction  $p$  and magnetic orientation in these simulated observations, when integrating along the mean magnetic field ( $\alpha = 90^\circ$ ), and perpendicular to it ( $\alpha = 0^\circ$ ). The large-scale component of the magnetic field is clearly visible in several regions, for instance in the lower right corner of the  $\alpha = 0^\circ$  case: it leads to long-range coherence in the polarization angle, which correlates with the highest polarization fractions and lowest column densities. Conversely, when integrating along the direction of the large-scale field ( $\alpha = 90^\circ$ , right column),  $p$  is on average much lower, and no such long-range ordering of  $\chi$  is visible, although some local correlations are present. These effects are expected from the vectorial nature of the polarization: with the magnetic field more or less aligned with the line of sight, only its transverse fluctuations lead to a signal in polarization, and these fluctuations are isotropic in the plane of the sky, so they cancel out in the integration (along the line of sight and also through beam dilution). This correlation between  $p$  and spatial coherence of the polarization angle is discussed later on (Sect. 3.4).

Statistics of simulated maps of the polarization fraction (maximum, mean and standard deviation) are shown as a function of the viewing angle  $\alpha$  in Fig. 16. We find the maximum polarization fraction to be  $p_{\text{max}} \simeq 0.14\text{--}0.21$  (depending on the viewing angle  $\alpha$ ). On some lines of sight, in the most tenuous parts of the map integrated perpendicularly to the large-scale  $\mathbf{B}$  (e.g., in the lower right corner of the map in the  $\alpha = 0^\circ$  case),  $p_{\text{max}}$  almost reaches the theoretical maximum value possible, which is the intrinsic polarization fraction,

$$p_i = \frac{p_0}{1 - \frac{p_0}{3}}, \quad (8)$$



**Fig. 16.** Statistics of polarization fractions in the simulated *Planck* observations as a function of viewing angle  $\alpha$  (see Fig. 13). The solid blue line shows  $p_{\text{max}}$ , the solid black line shows the mean  $p$ , and the solid green line shows the value of  $p$  for the most diffuse lines of sight in the map. The dashed black line marks the polarization fraction parameter  $p_0$  and the dashed green line gives the theoretical polarization fraction in the case where the density and magnetic field are homogeneous and the latter makes an angle  $\alpha$  with the plane of the sky (see text). The grey region shows the  $\pm 1\sigma$  spread around the mean  $p$ .

obtained when the medium is homogeneous and the magnetic field is uniform and parallel to the plane of the sky ( $\gamma = 0^\circ$ ). Figure 16 emphasizes the importance of the magnetic field geometry on the measured  $p_{\text{max}}$ , as that value varies by about 40% over the range of viewing angles.

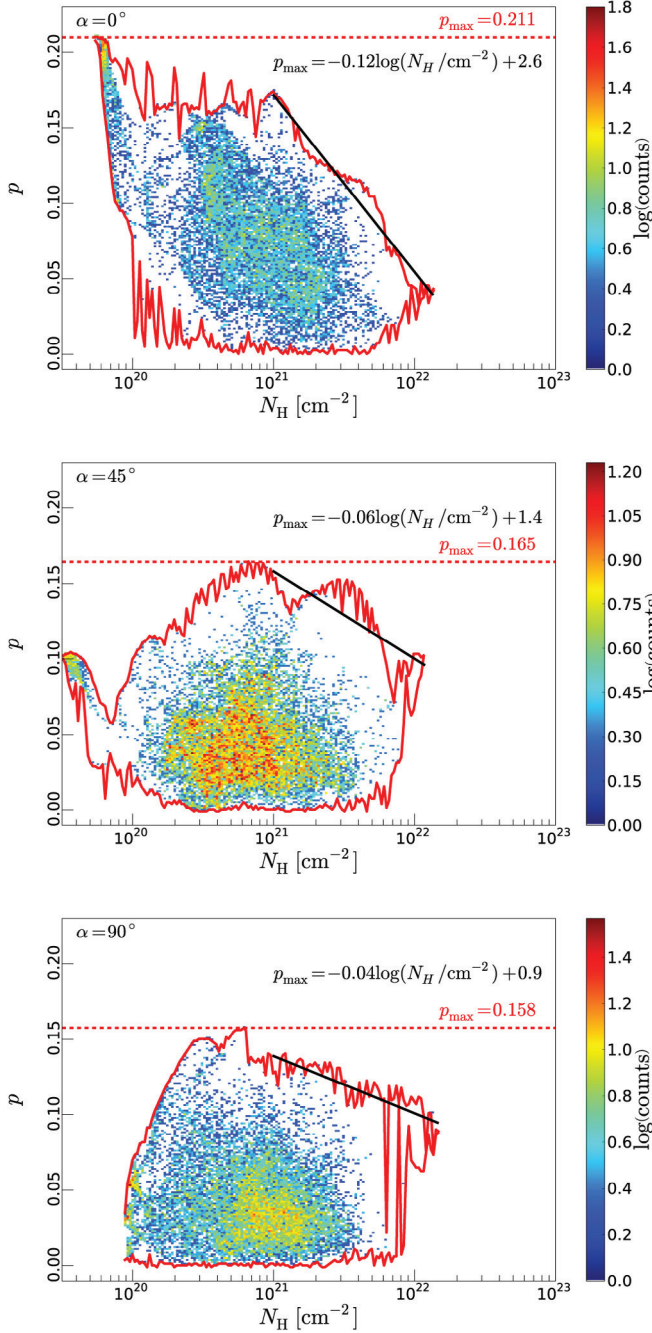
### 3.3. Polarization fraction vs. column density

We show in Fig. 17 the joint distribution function of polarization fractions  $p$  and total gas column densities  $N_{\text{H}}$  in the simulated observations when integrating along both directions used in Fig. 15, and in the intermediate case  $\alpha = 45^\circ$ . The most striking feature of the plots in Fig. 17 is the different behaviour at low column densities  $N_{\text{H}} < 10^{20} \text{ cm}^{-2}$ . Along these lines of sight, the density is essentially uniform, with  $n_{\text{H}}$  of about  $2 \text{ cm}^{-3}$ , so the computed polarization is entirely due to magnetic field geometry; when we integrate with  $\alpha = 0^\circ$  the mean magnetic field is almost in the plane of the sky,  $\gamma \simeq 0^\circ$ , and polarized emission is at its highest, while when we integrate with  $\alpha = 90^\circ$ , then the ordered field is almost along the line of sight, so  $\gamma \simeq 90^\circ$  and no polarized emission appears. In fact, for each value of  $\alpha$ , polarization fractions observed towards the most diffuse lines of sight are well reproduced by the formula for a homogeneous medium, easily derived from Eqs. (5)–(7),

$$p = \frac{p_0 \cos^2 \alpha}{1 - p_0 \left( \cos^2 \alpha - \frac{2}{3} \right)} \quad (9)$$

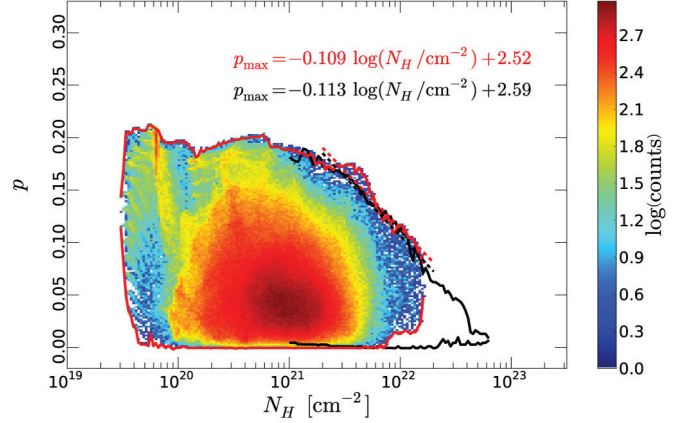
as can be seen in Fig. 16. We may therefore only derive the polarization fraction parameter  $p_0$  from the maximum observed value  $p_{\text{max}}$  if the angle between the magnetic field and the plane of the sky is known, which is a strong assumption.

The second striking feature of Fig. 17 is the decrease of the maximum polarization fraction with increasing column density, as observed in the data. The same linear fit yields slopes  $\Delta p_{\text{max}} / \Delta \log(N_{\text{H}} / \text{cm}^{-2})$  that span values from  $-0.025$  (for  $\alpha = 80^\circ$ ) to  $-0.15$  (for  $\alpha = -15^\circ$ ), the latter being comparable to those found in the data for the selected fields.

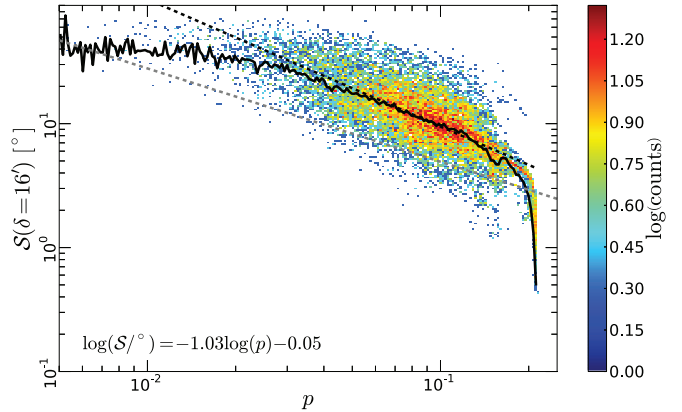


**Fig. 17.** Two-dimensional distribution functions of polarization fractions and logarithmic column densities in the simulated *Planck* observations. *Top*: viewing angle  $\alpha = 0^\circ$ . *Middle*: viewing angle  $\alpha = 45^\circ$ . *Bottom*: viewing angle  $\alpha = 90^\circ$ . The dashed red horizontal lines and the solid red and black lines are the same as in Fig. 4. The fits to the upper envelopes are performed for  $N_H > 10^{21} \text{ cm}^{-2}$ .

For a global comparison between simulations and observations, we show in Fig. 18 the distribution of  $p$  and  $N_H$  for all the simulated fields, with their upper and lower envelopes, together with the envelope for the selected sky fields. Linear fits to the distributions' upper envelopes are performed, restricted to a common range of column densities  $2 \times 10^{21} \text{ cm}^{-2} < N_H < 2 \times 10^{22} \text{ cm}^{-2}$ . They yield similar values in terms of both slopes ( $m = -0.109$  for simulations, compared to  $m = -0.113$  for the selected fields) and intercepts ( $c = 2.52$  for simulations, compared to  $c = 2.59$  for the selected fields). Note that the ‘‘ripple’’



**Fig. 18.** Comparison between the distributions of the polarization fractions  $p$  and logarithmic column densities in the simulations (colour scale, all viewing angles combined, with upper and lower envelopes in solid red lines) and those of the observations in the selected fields (solid black lines). Note that the latter are restricted to  $N_H > 10^{21} \text{ cm}^{-2}$ . Dashed lines are linear fits of the form  $p_{\max} = m \log(N_H / \text{cm}^{-2}) + c$  on the distributions' upper envelopes, restricted to a common range of column densities  $2 \times 10^{21} \text{ cm}^{-2} < N_H < 2 \times 10^{22} \text{ cm}^{-2}$ .

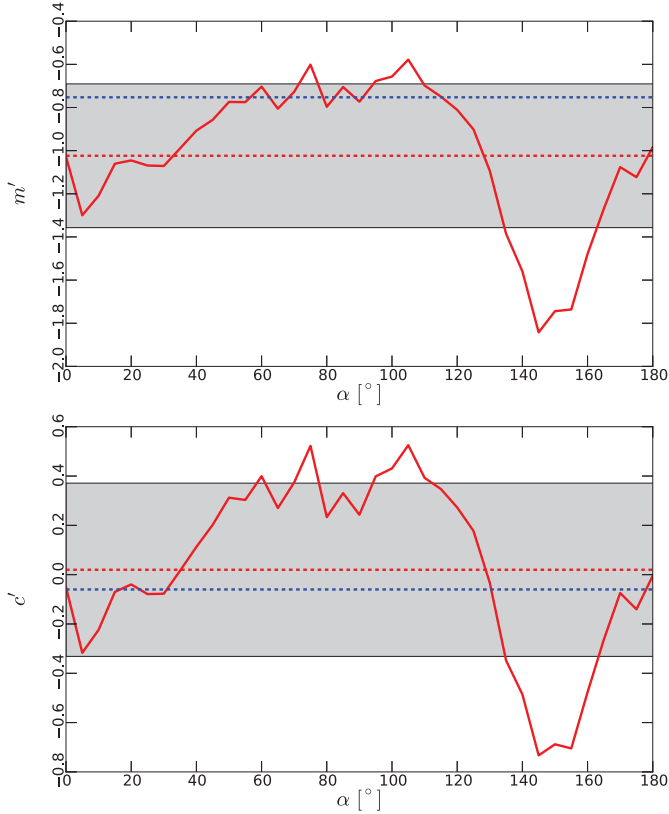


**Fig. 19.** Two-dimensional distribution function of  $\log(p)$  and  $\log(S)$  in the simulated observations for  $\delta = 16'$  and  $\alpha = 0^\circ$ . The solid black curve represents the evolution of the mean  $\log(S)$  per bin of  $\log(p)$ . A linear fit  $\log(S) = m' \log(p) + c'$  is performed, restricted to bins in  $\log(p)$  that contain at least 1% of the total number of points. This fit is shown as the dashed black line. The dashed grey line is the large-scale fit presented in Sect. 2.5.

pattern in the density plot at low  $N_H$  is due to the sampling in viewing angles  $\alpha$ , and is a signature of the decrease of  $p$  with viewing angle for the most diffuse lines of sight, as already noted in Fig. 16.

### 3.4. Polarization angle coherence vs. polarization fraction

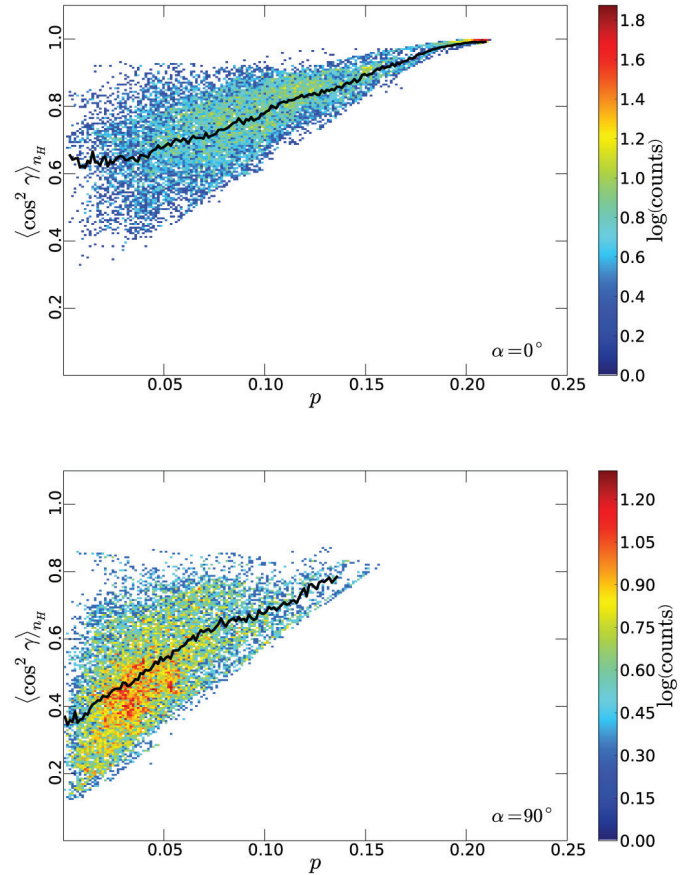
The angle dispersion function  $S$  is computed from the simulated  $\psi$  maps, using a lag  $\delta = 16'$ , as we did for the data. We first note that the mean angle dispersion function is larger when the large-scale magnetic field is oriented along the line of sight, with  $\langle S \rangle \simeq 12^\circ$  for  $\alpha = 0^\circ$  and  $\langle S \rangle \simeq 20^\circ$  for  $\alpha = 90^\circ$ , a result that is consistent with the findings of Falceta-Gonçalves et al. (2008). Maps of  $S$  (for the  $\alpha = 0^\circ$  and  $\alpha = 90^\circ$  cases) can be



**Fig. 20.** Slopes  $m'$  (top) and intercepts  $c'$  (bottom) of the linear fits  $\log(S) = m' \log(p) + c'$  to the distribution of  $\log(p)$  and  $\log(S)$  in the simulated observations, as a function of viewing angle  $\alpha$ . The lag is  $\delta = 16'$ . The dashed blue lines indicate the values for the large-scale fit presented in Sect. 2.5, the dashed red lines represent the average slope and intercept over the range of  $\alpha$ , and the grey areas indicate  $\pm 1\sigma$  around the mean, with the standard deviation  $\sigma$  computed statistically over all angles.

seen in the lower row panels of Fig. 15, exhibiting filamentary patterns similar to those found in observations. These filaments of high  $S$  also correspond to regions where the polarization angle rotates on small scales, and are correlated with regions of low polarization fraction  $p$  (compare with the middle row panels of Fig. 15). This anti-correlation is clearly seen in distribution functions of  $\log(p)$  and  $\log(S)$ , as shown in Fig. 19 for the  $\alpha = 0^\circ$  case. A linear fit  $\log(S) = m' \log(p) + c'$  to the mean  $\log(S)$  per bin of  $\log(p)$  is performed, restricted to bins which contain at least 1% of the total number of points and limited to  $p < p_0$  to avoid the most diffuse lines of sight. The slope and intercept of the anti-correlation observed in the data are fairly well reproduced ( $m' = -1.0 \pm 0.3$  and  $c' = 0.02 \pm 0.34$  over the range of  $\alpha$ , compared to  $m' = -0.75$  and  $c' = -0.06$  in observations) with steeper slopes for viewing angles  $\alpha \simeq 0^\circ$  and shallower slopes for viewing angles  $\alpha \simeq 90^\circ$  (see Fig. 20). However, since the slopes in simulations are generally steeper than what is observed, but with very similar intercepts at  $p = 1$ , the angle dispersion function  $S$  in simulations is globally higher than in observations for a given polarization fraction.

This result suggests that, in the simulations, the angle dispersion function is too large for a given polarization fraction, i.e., that the magnetic field is too tangled. Since the physical processes one can think of to reduce the field's tangling (e.g., larger field intensity with respect to turbulence or partial ion-neutral decoupling) would also affect  $p$ , we propose that this difference



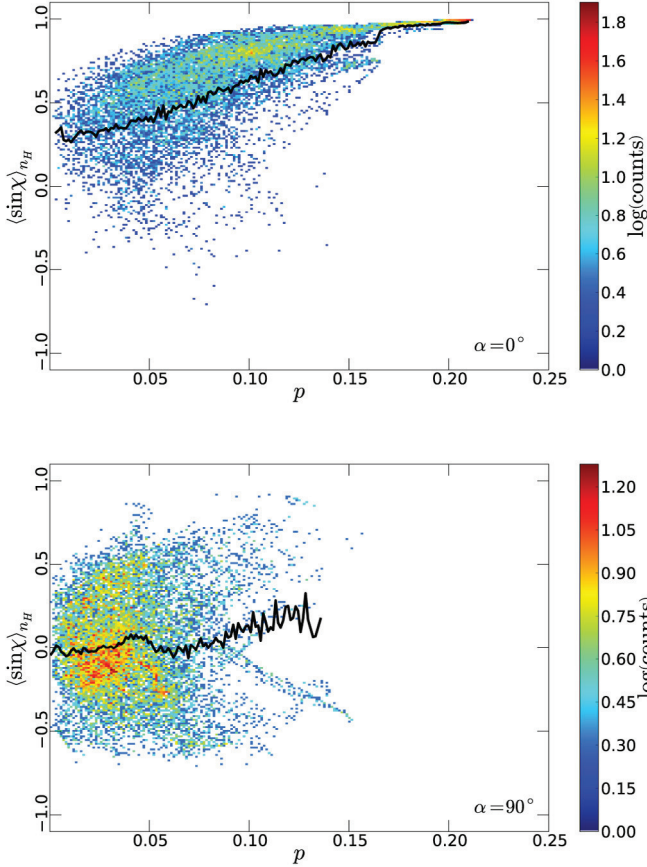
**Fig. 21.** Distribution functions of polarization fraction  $p$  and density-weighted mean of  $\cos^2 \gamma$  ( $\gamma$  is the angle of the magnetic field with respect to the plane of the sky, see Fig. 14) along the line of sight  $z'$  in the simulation cube. *Top*: viewing angle  $\alpha = 0^\circ$ . *Bottom*: viewing angle  $\alpha = 90^\circ$ . The solid black lines show the mean values per bin of  $p$ .

comes from the lack of power in the low frequency modes of the simulated turbulence, as illustrated by the fact that the power spectra of the velocity and magnetic field components flatten out at small wavenumber  $k$ . In reality, molecular clouds are organized in a self-similar structure over a broad range of scales and that is therefore not properly reproduced in the simulations we used. In short, the large-scale fluctuations of the magnetic field are closer to random in simulations than in reality.

### 3.5. Statistics on the magnetic field fluctuations in the simulations

We investigate here the possible causes of the variations in the polarization fraction  $p$  and the dispersion of the polarization angle  $S$  in the simulations, i.e., what are the respective roles of the field tangling and the orientation of the large-scale field in the variations of  $p$  and  $S$ . To quantify these roles, we compute the average and dispersion along the line of sight of both  $\cos^2 \gamma$  and  $\sin \chi$  (see Fig. 14 for the definition of angles). These quantities are computed for different viewing angles. In the following, we write the magnetic field as  $\mathbf{B} = \mathbf{B}_0 + \Delta\mathbf{B}$ , where  $\mathbf{B}_0$  is the large-scale ordered field and  $\Delta\mathbf{B}$  is the fluctuating part of  $\mathbf{B}$ .

The role of the average values of the angles  $\gamma$  and  $\chi$  along the line of sight is illustrated in Figs. 21 and 22. First, the role of the large-scale field  $\mathbf{B}_0$  is clear: the largest values of  $p$  are obtained

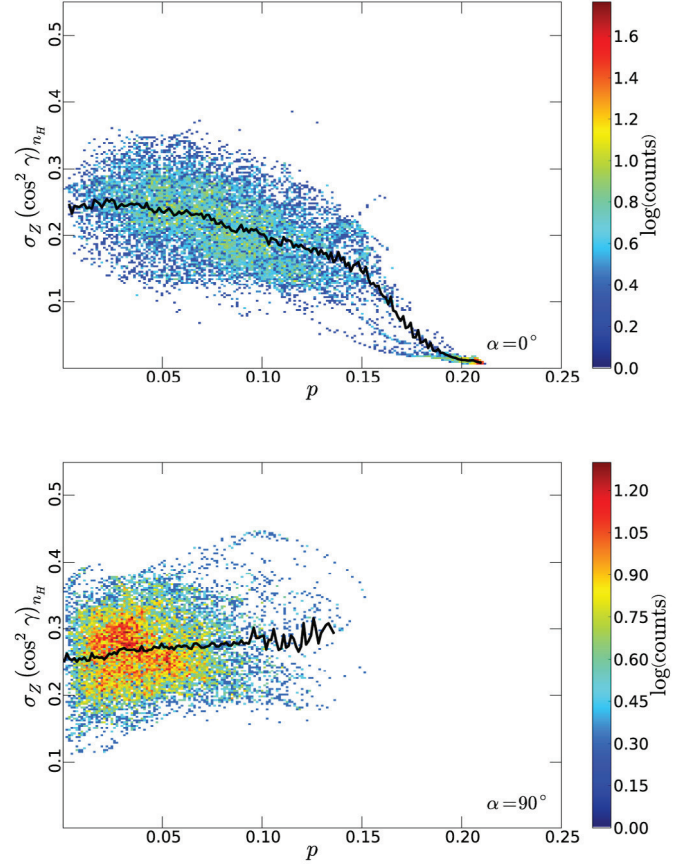


**Fig. 22.** Distribution functions of polarization fraction  $p$  and density-weighted mean of  $\sin \chi$  ( $\chi$  is the position angle of the projection of the magnetic field in the plane of the sky, see Fig. 14) along the line of sight  $z'$  in the simulation cube. *Top*: viewing angle  $\alpha = 0^\circ$ . *Bottom*: viewing angle  $\alpha = 90^\circ$ . The solid black lines show the mean values per bin of  $p$ .

when  $\mathbf{B}_0$  is viewed in the plane of the sky ( $\alpha \simeq 0^\circ$ ). The largest  $p$  values are obtained when the average of  $\cos^2 \gamma$  along the line of sight stays close to unity. In that case, the field perturbations are such that they keep the field close to the plane of the sky, on average, hence the large  $p$ . The same effect is visible in the top panel of Fig. 22 where the largest polarization fractions are obtained for average values of  $\chi$  close to  $90^\circ$ .

However, even in this configuration ( $\alpha = 0^\circ$ ), small values of  $p$  are obtained. The fraction of low  $p$  values is clearly larger when the large-scale field is viewed along the line of sight ( $\alpha = 90^\circ$ ). The remarkable feature visible in Fig. 21 (bottom panel) is the proportionality of  $p_{\max}$  with the average of  $\cos^2 \gamma$ : the smaller this average, the closer  $\gamma$  is to  $90^\circ$ , therefore the closer the field is aligned with the line of sight, and the smaller the resulting value of  $p_{\max}$ . One also sees in Fig. 21 that  $\langle \cos^2 \gamma \rangle$  reaches much smaller values when  $\mathbf{B}_0$  is along the line of sight (bottom panel), producing lower values of  $p$  than in the case where  $\mathbf{B}_0$  is in the plane of the sky (top panel).

We note, interestingly, that the same effect is not visible in Fig. 22, which displays the line of sight average of  $\sin \chi$  versus  $p$ : there is no such upper value of  $p$  that would scale with the average of  $\sin \chi$  because this fluctuation of the field direction is measured in the plane of the sky and does not affect the maximal polarization fraction that can be obtained. Instead, when  $\mathbf{B}_0$  is along the line of sight for instance, the scatter of  $\langle \sin \chi \rangle$  along



**Fig. 23.** Distribution functions of polarization fraction  $p$  and density-weighted standard deviation of  $\cos^2 \gamma$  along the line of sight  $z'$  in the simulation cube. *Top*: viewing angle  $\alpha = 0^\circ$ . *Bottom*: viewing angle  $\alpha = 90^\circ$ . The solid black lines show the mean values per bin of  $p$ .

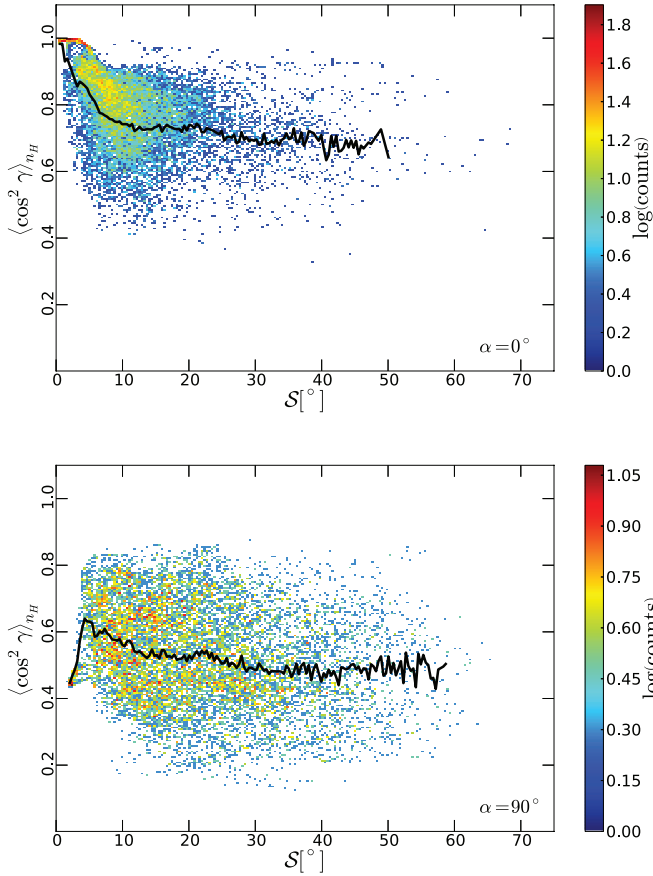
the line of sight is the largest and the resulting values of  $p$  are low.

Figure 23 also illustrates the effect of the field tangling: the larger the dispersion of  $\cos^2 \gamma$  along the line of sight (and the larger the scatter of this dispersion), the smaller  $p$  is. Obviously, when the line of sight is dominated by the large-scale field, the scatter is the lowest.

Figure 24 shows the joint distribution of the average of  $\cos^2 \gamma$  and  $\mathcal{S}$ , where one recognizes the role of the large-scale field when  $\alpha = 0^\circ$ : the lowest values of  $\mathcal{S}$  are obtained when  $\gamma$  stays close to  $0^\circ$ , meaning that the field is more or less in the plane of the sky. Clearly, the largest values of  $\mathcal{S}$  are obtained when the influence of the large-scale field is minimized ( $\alpha = 90^\circ$ , bottom panel).

#### 4. Conclusions

To summarize, the maximum polarization fraction  $p_{\max}$  observed towards the sample of nearby fields selected in this study is reached in the most diffuse fields. The large-scale decrease of  $p_{\max}$  with increasing  $N_H$  is seen in the individual fields considered here, as soon as  $N_H > 10^{21} \text{ cm}^{-2}$ . This trend is fairly well reproduced by numerical simulations of anisotropic MHD turbulence, even assuming uniform dust temperatures and grain alignment efficiencies in the gas weakly shielded from the UV radiation. The polarization of thermal dust emission observed by *Planck* towards these regions is essentially related to



**Fig. 24.** Distribution functions of angle dispersion function  $S$  ( $\delta = 16^\circ$ ) and density-weighted mean of  $\cos^2 \gamma$  in the simulation cube. *Top*: viewing angle  $\alpha = 0^\circ$ . *Bottom*: viewing angle  $\alpha = 90^\circ$ . The solid black lines show the mean values per bin of  $S$ .

the geometry of the magnetic field and in particular to its orientation at large scales with respect to the line of sight. We do not discuss the evolution of polarization fractions at large column densities  $N_H > 3 \times 10^{22} \text{ cm}^{-2}$ , for which the MHD simulation considered is not suitable. It is clear, however, that additional processes must be at work to achieve the change of slope in the  $p_{\text{max}}$  vs.  $\log(N_H/\text{cm}^{-2})$  relation observed towards the most opaque lines of sight. This change is probably related to variations in the properties of dust alignment, as pointed out by Soler et al. (2013). We also find that polarization fractions observed by *Planck* towards these nearby regions correlate well with the local coherence of the polarization angle, which is measured using the angle dispersion function  $S$ . This correlation is also found in simulations, with slopes that are very close to observational values. In simulations, however, values of  $S$  for a given polarization fraction are globally too high compared to observations, which points to a possible limitation of the specific MHD simulation used.

**Acknowledgements.** The development of *Planck* has been supported by: ESA; CNES and CNRS/INSU-IN2P3-INP (France); ASI, CNR, and INAF (Italy); NASA and DoE (USA); STFC and UKSA (UK); CSIC, MICINN, JA and RES (Spain); Tekes, AoF and CSC (Finland); DLR and MPG (Germany); CSA (Canada); DTU Space (Denmark); SER/SSO (Switzerland); RCN (Norway); SFI (Ireland); FCT/MCTES (Portugal); and PRACE (EU). A description of the *Planck* Collaboration and a list of its members, including

the technical or scientific activities in which they have been involved, can be found at [http://www.sciops.esa.int/index.php?project=planck&page=Planck\\_Collaboration](http://www.sciops.esa.int/index.php?project=planck&page=Planck_Collaboration). Some of the results in this paper have been derived using the HEALPix package. The authors would like to thank Charles Beichman for his careful reading of the manuscript and useful comments. The research leading to these results has received funding from the European Research Council under the European Union's Seventh Framework Programme (FP7/2007-2013) / ERC grant agreement No. 267934.

## References

- Alves, F. O., Franco, G. A. P., & Girart, J. M. 2008, *A&A*, 486, L13  
 Andersson, B.-G. 2012, *Magnetic Fields in Diffuse Media*, submitted [[arXiv:1208.4393](https://arxiv.org/abs/1208.4393)]  
 Bally, J. 2008, *Overview of the Orion Complex*, ed. B. Reipurth (ASP), 459  
 Chandrasekhar, S., & Fermi, E. 1953, *ApJ*, 118, 113  
 Chapman, N. L., Goldsmith, P. F., Pineda, J. L., et al. 2011, *ApJ*, 741, 21  
 Crutcher, R. M., Wandelt, B., Heiles, C., Falgarone, E., & Troland, T. H. 2010, *ApJ*, 725, 466  
 de Zeeuw, P. T., Hoogerwerf, R., de Bruijne, J. H. J., Brown, A. G. A., & Blaauw, A. 1999, *AJ*, 117, 354  
 Draine, B. T. 2011, *Physics of the Interstellar and Intergalactic Medium* (Princeton University Press)  
 Draine, B. T., & Fraisse, A. A. 2009, *ApJ*, 696, 1  
 Elias, J. H. 1978, *ApJ*, 224, 857  
 Falceta-Gonçalves, D., Lazarian, A., & Kowal, G. 2008, *ApJ*, 679, 537  
 Fiege, J. D., & Pudritz, R. E. 2000, *ApJ*, 544, 830  
 Fromang, S., Hennebelle, P., & Teyssier, R. 2006, *A&A*, 457, 371  
 Gonçalves, J., Galli, D., & Walmsley, M. 2005, *A&A*, 430, 979  
 Górski, K. M., Hivon, E., Banday, A. J., et al. 2005, *ApJ*, 622, 759  
 Hatano, H., Nishiyama, S., Kurita, M., et al. 2013, *AJ*, 145, 105  
 Hennebelle, P., & Audit, E. 2007, *A&A*, 465, 431  
 Hennebelle, P., Banerjee, R., Vázquez-Semadeni, E., Klessen, R. S., & Audit, E. 2008, *A&A*, 486, L43  
 Hildebrand, R. H., Kirby, L., Dotson, J. L., Houde, M., & Vaillancourt, J. E. 2009, *ApJ*, 696, 567  
 Hoang, T., & Lazarian, A. 2008, *MNRAS*, 388, 117  
 Lamarre, J., Puget, J., Ade, P. A. R., et al. 2010, *A&A*, 520, A9  
 Lazarian, A., Goodman, A. A., & Myers, P. C. 1997, *ApJ*, 490, 273  
 Lee, H. M., & Draine, B. T. 1985, *ApJ*, 290, 211  
 Levrier, F., Le Petit, F., Hennebelle, P., et al. 2012, *A&A*, 544, A22  
 Loren, R. B. 1989, *ApJ*, 338, 902  
 Luhman, K. L. 2008, *Chamaeleon*, ed. B. Reipurth (ASP), 169  
 Marchwinski, R. C., Pavel, M. D., & Clemens, D. P. 2012, *ApJ*, 755, 130  
 Martin, P. G. 1972, *MNRAS*, 159, 179  
 Martin, P. G. 1974, *ApJ*, 187, 461  
 Martin, P. G. 1975, *ApJ*, 202, 393  
 Montier, L., Plaszczyński, S., Levrier, F., et al. 2014a, *A&A*, submitted  
 Montier, L., Plaszczyński, S., Levrier, F., et al. 2014b, *A&A*, submitted  
 Ostriker, E. C., Stone, J. M., & Gammie, C. F. 2001, *ApJ*, 546, 980  
 Padovani, M., Brinch, C., Girart, J. M., et al. 2012, *A&A*, 543, A16  
 Palla, F., & Stahler, S. W. 2002, *ApJ*, 581, 1194  
 Pelkonen, V.-M., Juvela, M., & Padoan, P. 2009, *A&A*, 502, 833  
 Pereyra, A., & Magalhães, A. M. 2007, *ApJ*, 662, 1014  
 Planck Collaboration I. 2011, *A&A*, 536, A1  
 Planck Collaboration I. 2014, *A&A*, 571, A1  
 Planck Collaboration VI. 2014, *A&A*, 571, A6  
 Planck Collaboration VII. 2014, *A&A*, 571, A7  
 Planck Collaboration VIII. 2014, *A&A*, 571, A8  
 Planck Collaboration IX. 2014, *A&A*, 571, A9  
 Planck Collaboration X. 2014, *A&A*, 571, A10  
 Planck Collaboration XI. 2014, *A&A*, 571, A11  
 Planck Collaboration XVI. 2014, *A&A*, 571, A16  
 Planck Collaboration Int. XIII. 2014, 561, A97  
 Planck Collaboration Int. XIX. 2014, *A&A*, submitted [[arXiv:1405.0871](https://arxiv.org/abs/1405.0871)]  
 Planck Collaboration Int. XXI. 2014, *A&A*, submitted [[arXiv:1405.0873](https://arxiv.org/abs/1405.0873)]  
 Planck Collaboration Int. XXII. 2014, *A&A*, submitted [[arXiv:1405.0874](https://arxiv.org/abs/1405.0874)]  
 Plaszczyński, S., Montier, L., Levrier, F., & Tristram, M. 2014, *MNRAS*, 439, 4048  
 Soler, J. D., Hennebelle, P., Martin, P. G., et al. 2013, *ApJ*, 774, 128  
 Tauber, J. A., Mandolesi, N., Puget, J., et al. 2010, *A&A*, 520, A1  
 Teyssier, R. 2002, *A&A*, 385, 337  
 Ungerechts, H., & Thaddeus, P. 1987, *ApJS*, 63, 645  
 Wardle, M., & Königl, A. 1990, *ApJ*, 362, 120  
 Whittet, D. C. B., Prusti, T., Franco, G. A. P., et al. 1997, *A&A*, 327, 1194  
 Whittet, D. C. B., Hough, J. H., Lazarian, A., & Hoang, T. 2008, *ApJ*, 674, 304

- Wilking, B. A., Gagné, M., & Allen, L. E. 2008, *Star Formation in the  $\rho$  Ophiuchi Molecular Cloud*, ed. B. Reipurth (ASP), 351
- Zagury, F., Boulanger, F., & Banchet, V. 1999, *A&A*, 352, 645
- 
- <sup>1</sup> APC, AstroParticule et Cosmologie, Université Paris Diderot, CNRS/IN2P3, CEA/Irfu, Observatoire de Paris, Sorbonne Paris Cité, 10 rue Alice Domon et Léonie Duquet, 75205 Paris Cedex 13, France
  - <sup>2</sup> African Institute for Mathematical Sciences, 6-8 Melrose Road, 7945 Muizenberg, Cape Town, South Africa
  - <sup>3</sup> Agenzia Spaziale Italiana Science Data Center, via del Politecnico snc, 00133 Roma, Italy
  - <sup>4</sup> Agenzia Spaziale Italiana, Viale Liegi 26, 00198 Roma, Italy
  - <sup>5</sup> Astrophysics Group, Cavendish Laboratory, University of Cambridge, J J Thomson Avenue, Cambridge CB3 0HE, UK
  - <sup>6</sup> Astrophysics & Cosmology Research Unit, School of Mathematics, Statistics & Computer Science, University of KwaZulu-Natal, Westville Campus, Private Bag X54001, 4000 Durban, South Africa
  - <sup>7</sup> Atacama Large Millimeter/submillimeter Array, ALMA Santiago Central Offices, Alonso de Cordova 3107, Vitacura, Casilla 763 0355 Santiago, Chile
  - <sup>8</sup> CITA, University of Toronto, 60 St. George St., Toronto, ON M5S 3H8, Canada
  - <sup>9</sup> CNRS, IRAP, 9 Av. colonel Roche, BP 44346, 31028 Toulouse Cedex 4, France
  - <sup>10</sup> California Institute of Technology, Pasadena, California, USA
  - <sup>11</sup> Centro de Estudios de Física del Cosmos de Aragón (CEFCA), Plaza San Juan, 1, planta 2, 44001 Teruel, Spain
  - <sup>12</sup> Computational Cosmology Center, Lawrence Berkeley National Laboratory, Berkeley, California, USA
  - <sup>13</sup> DSM/Irfu/SPP, CEA-Saclay, 91191 Gif-sur-Yvette Cedex, France
  - <sup>14</sup> DTU Space, National Space Institute, Technical University of Denmark, Elektrovej 327, 2800 Kgs. Lyngby, Denmark
  - <sup>15</sup> Département de Physique Théorique, Université de Genève, 24 quai E. Ansermet, 1211 Genève 4, Switzerland
  - <sup>16</sup> Departamento de Física Fundamental, Facultad de Ciencias, Universidad de Salamanca, 37008 Salamanca, Spain
  - <sup>17</sup> Departamento de Física, Universidad de Oviedo, Avda. Calvo Sotelo s/n, 33007 Oviedo, Spain
  - <sup>18</sup> Department of Astronomy and Astrophysics, University of Toronto, 50 Saint George Street, Toronto, Ontario, Canada
  - <sup>19</sup> Department of Astrophysics/IMAPP, Radboud University Nijmegen, PO Box 9010, 6500 GL Nijmegen, The Netherlands
  - <sup>20</sup> Department of Physics & Astronomy, University of British Columbia, 6224 Agricultural Road, Vancouver, British Columbia, Canada
  - <sup>21</sup> Department of Physics and Astronomy, Dana and David Dornsife College of Letter, Arts and Sciences, University of Southern California, Los Angeles, CA 90089, USA
  - <sup>22</sup> Department of Physics and Astronomy, University College London, London WC1E 6BT, UK
  - <sup>23</sup> Department of Physics, Florida State University, Keen Physics Building, 77 Chieftan Way, Tallahassee, Florida, USA
  - <sup>24</sup> Department of Physics, Gustaf Hällströmin katu 2a, University of Helsinki, 00014 Helsinki, Finland
  - <sup>25</sup> Department of Physics, Princeton University, Princeton, New Jersey, USA
  - <sup>26</sup> Department of Physics, University of California, Santa Barbara, California, USA
  - <sup>27</sup> Department of Physics, University of Illinois at Urbana-Champaign, 1110 West Green Street, Urbana, Illinois, USA
  - <sup>28</sup> Dipartimento di Fisica e Astronomia G. Galilei, Università degli Studi di Padova, via Marzolo 8, 35131 Padova, Italy
  - <sup>29</sup> Dipartimento di Fisica e Scienze della Terra, Università di Ferrara, via Saragat 1, 44122 Ferrara, Italy
  - <sup>30</sup> Dipartimento di Fisica, Università La Sapienza, P.le A. Moro 2, 00185 Roma, Italy
  - <sup>31</sup> Dipartimento di Fisica, Università degli Studi di Milano, via Celoria, 16, 20133 Milano, Italy
  - <sup>32</sup> Dipartimento di Fisica, Università degli Studi di Trieste, via A. Valerio 2, 34 127 Trieste, Italy
  - <sup>33</sup> Dipartimento di Fisica, Università di Roma Tor Vergata, via della Ricerca Scientifica, 1, 00133 Roma, Italy
  - <sup>34</sup> Discovery Center, Niels Bohr Institute, Blegdamsvej 17, 2100 Copenhagen, Denmark
  - <sup>35</sup> European Southern Observatory, ESO Vitacura, Alonso de Cordova 3107, Vitacura, Casilla 19001 Santiago, Chile
  - <sup>36</sup> European Space Agency, ESAC, Planck Science Office, Camino bajo del Castillo, s/n, Urbanización Villafranca del Castillo, 28691 Villanueva de la Cañada, Madrid, Spain
  - <sup>37</sup> European Space Agency, ESTEC, Keplerlaan 1, 2201 AZ Noordwijk, The Netherlands
  - <sup>38</sup> Helsinki Institute of Physics, Gustaf Hällströmin katu 2, University of Helsinki, 00014 Helsinki, Finland
  - <sup>39</sup> INAF – Osservatorio Astrofisico di Catania, via S. Sofia 78, 95123 Catania, Italy
  - <sup>40</sup> INAF – Osservatorio Astronomico di Padova, Vicolo dell’Osservatorio 5, 35122 Padova, Italy
  - <sup>41</sup> INAF – Osservatorio Astronomico di Roma, via di Frascati 33, 00040 Monte Porzio Catone, Italy
  - <sup>42</sup> INAF – Osservatorio Astronomico di Trieste, via G.B. Tiepolo 11, 34143 Trieste, Italy
  - <sup>43</sup> INAF/IASF Bologna, via Gobetti 101, 40129 Bologna, Italy
  - <sup>44</sup> INAF/IASF Milano, via E. Bassini 15, 20133 Milano, Italy
  - <sup>45</sup> INFN, Sezione di Bologna, via Irnerio 46, 40126 Bologna, Italy
  - <sup>46</sup> INFN, Sezione di Roma 1, Università di Roma Sapienza, P.le Aldo Moro 2, 00185, Roma, Italy
  - <sup>47</sup> INFN/National Institute for Nuclear Physics, via Valerio 2, 34127 Trieste, Italy
  - <sup>48</sup> Imperial College London, Astrophysics group, Blackett Laboratory, Prince Consort Road, London, SW7 2AZ, UK
  - <sup>49</sup> Infrared Processing and Analysis Center, California Institute of Technology, Pasadena, CA 91125, USA
  - <sup>50</sup> Institut d’Astrophysique Spatiale, CNRS (UMR 8617), Université Paris-Sud 11, Bâtiment 121, 91405 Orsay, France
  - <sup>51</sup> Institut d’Astrophysique de Paris, CNRS (UMR 7095), 98bis boulevard Arago, 75014 Paris, France
  - <sup>52</sup> Institute for Space Sciences, 077125 Bucharest-Magurale, Romania
  - <sup>53</sup> Institute of Astronomy, University of Cambridge, Madingley Road, Cambridge CB3 0HA, UK
  - <sup>54</sup> Institute of Theoretical Astrophysics, University of Oslo, Blindern, 0315 Oslo, Norway
  - <sup>55</sup> Instituto de Física de Cantabria (CSIC-Universidad de Cantabria), Avda. de los Castros s/n, Santander, Spain
  - <sup>56</sup> Jet Propulsion Laboratory, California Institute of Technology, 4800 Oak Grove Drive, Pasadena, California, USA
  - <sup>57</sup> Jodrell Bank Centre for Astrophysics, Alan Turing Building, School of Physics and Astronomy, The University of Manchester, Oxford Road, Manchester, M13 9PL, UK
  - <sup>58</sup> Kavli Institute for Cosmology Cambridge, Madingley Road, Cambridge, CB3 0HA, UK
  - <sup>59</sup> LAL, Université Paris-Sud, CNRS/IN2P3, 91898 Orsay, France
  - <sup>60</sup> LERMA, CNRS, Observatoire de Paris, 61 avenue de l’Observatoire, 75014 Paris, France
  - <sup>61</sup> Laboratoire AIM, IRFU/Service d’Astrophysique – CEA/DSM – CNRS – Université Paris Diderot, Bât. 709, CEA-Saclay, 91191 Gif-sur-Yvette Cedex, France
  - <sup>62</sup> Laboratoire Traitement et Communication de l’Information, CNRS (UMR 5141) and Télécom ParisTech, 46 rue Barrault, 75634 Paris Cedex 13, France
  - <sup>63</sup> Laboratoire de Physique Subatomique et de Cosmologie, Université Joseph Fourier Grenoble I, CNRS/IN2P3, Institut National Polytechnique de Grenoble, 53 rue des Martyrs, 38026 Grenoble Cedex, France

- <sup>64</sup> Laboratoire de Physique Théorique, Université Paris-Sud 11 & CNRS, Bâtiment 210, 91405 Orsay, France
- <sup>65</sup> Lawrence Berkeley National Laboratory, Berkeley, California, USA
- <sup>66</sup> Max-Planck-Institut für Astrophysik, Karl-Schwarzschild-Str. 1, 85741 Garching, Germany
- <sup>67</sup> National University of Ireland, Department of Experimental Physics, Maynooth, Co. Kildare, Ireland
- <sup>68</sup> Niels Bohr Institute, Blegdamsvej 17, 2100 Copenhagen, Denmark
- <sup>69</sup> Observational Cosmology, Mail Stop 367-17, California Institute of Technology, Pasadena, CA 91125, USA
- <sup>70</sup> SISSA, Astrophysics Sector, via Bonomea 265, 34136 Trieste, Italy
- <sup>71</sup> School of Physics and Astronomy, Cardiff University, Queens Buildings, The Parade, Cardiff, CF24 3AA, UK
- <sup>72</sup> Space Sciences Laboratory, University of California, Berkeley, California, USA
- <sup>73</sup> Special Astrophysical Observatory, Russian Academy of Sciences, Nizhnij Arkhyz, Zelenchukskiy region, Karachai-Cherkessian Republic, 369167, Russia
- <sup>74</sup> Sub-Department of Astrophysics, University of Oxford, Keble Road, Oxford OX1 3RH, UK
- <sup>75</sup> UPMC Univ Paris 06, UMR 7095, 98bis boulevard Arago, 75014, Paris, France
- <sup>76</sup> Université de Toulouse, UPS-OMP, IRAP, 31028 Toulouse Cedex 4, France
- <sup>77</sup> University of Granada, Departamento de Física Teórica y del Cosmos, Facultad de Ciencias, 18071 Granada, Spain
- <sup>78</sup> University of Granada, Instituto Carlos I de Física Teórica y Computacional, 18071 Granada, Spain
- <sup>79</sup> Warsaw University Observatory, Aleje Ujazdowskie 4, 00-478 Warszawa, Poland